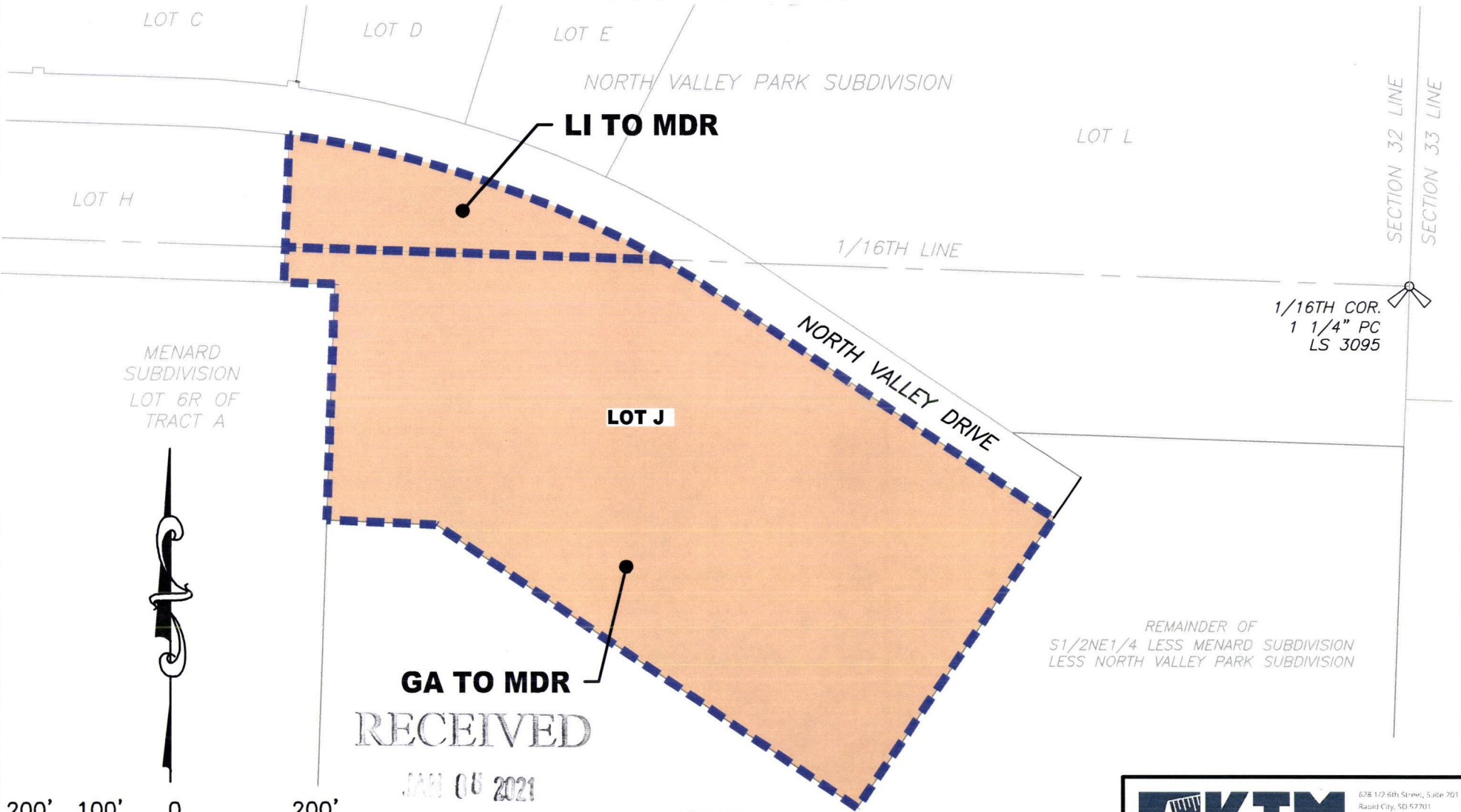


Case No. 21RZ003

Legal Description:

A portion of Lot J of North Valley Park Subdivision, a portion of NE1/4, located in Section 32, T2N, R8E, BHM, Rapid City, Pennington County, South Dakota, more fully described as follows: Commencing at the North 1/16th corner of Sections 32 and 33, T2N, R8E, BHM, Rapid City, Pennington County, South Dakota being monumented by a rebar and plastic cap marked "DAVIS ENG"; thence N88°02'12"W, a distance of 1047.53 feet to the point of beginning; Thence first course: N88°02'12"W, a distance of 530.52 feet; Thence second course: N01°57'54"E, a distance of 158.57 feet; Thence third course: On a non-tangent curve turning to the right with an arc length of 557.05 feet, with a radius of 1466.00 feet, with a chord bearing of S71°23'43"E, with a chord length of 553.71 feet to the point of beginning

REZONE EXHIBIT LOT J OF NORTH VALLEY PARK SUBDIVISION OF SECTION 32, T2N, R8E, B.H.M., CITY OF RAPID CITY, PENNINGTON COUNTY, SOUTH DAKOTA.



GA TO MDR
RECEIVED
JAN 06 2021

LEGEND



MEDIUM DENSITY RESIDENTIAL

200' 100' 0 200'
SCALE: 1" = 200'

RAPID CITY DEPARTMENT OF
COMMUNITY DEVELOPMENT

KTM
DESIGN SOLUTIONS, INC.
628 172 6th Street, Suite 201
Rapid City, SD 57701
[P] (605) 791 5866
[F] (605) 791 5863
[E] engineers@ktrm.com
CIVIL ENGINEERING | LAND SURVEYING | LAND PLANNING | PROJECT MANAGEMENT | CONSTRUCTION ADMINISTRATION
www.ktrmdesignsolutions.com