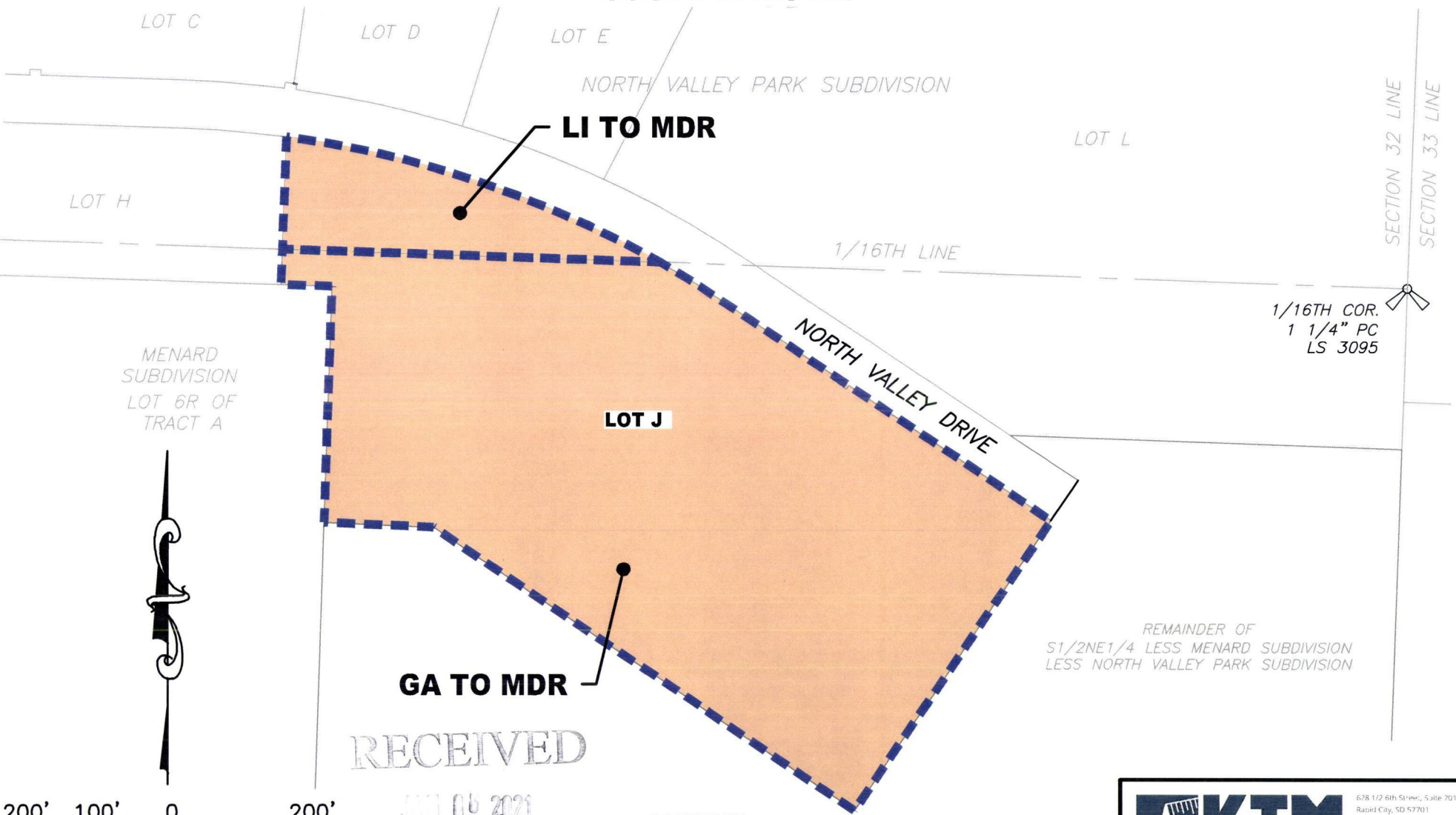


Case No. 21RZ002

Legal Description:

A portion of Lot J of North Valley Park Subdivision, a portion of NE1/4 of Section 32, T2N, R8E, BHM, Rapid City, Pennington County, South Dakota, more fully described as follows: Commencing at the North 1/16th corner of Sections 32 and 33, T2N, R8E, BHM, Rapid City, Pennington County, South Dakota being monumented by a rebar and plastic cap marked "DAVIS ENG"; thence N88°02'12"W, a distance of 1047.53 feet to the point of beginning; Thence first course: On a non-tangent curve turning to the right with an arc length of 112.28 feet, with a radius of 1466.00 feet, with a chord bearing of S58°18'56"E, with a chord length of 112.26 feet; Thence second course: S56°07'17"E, a distance of 546.88 feet; Thence third course: S33°57'40"W, a distance of 493.23 feet; Thence fourth course: N56°01'51"W, a distance of 714.04 feet; Thence fifth course: N87°25'38"W, a distance of 153.84 feet; Thence sixth course: N01°55'17"E, a distance of 332.94 feet; Thence seventh course: N88°02'06"W, a distance of 71.28 feet; Thence eighth course: N01°55'54"E, a distance of 50.04 feet; Thence ninth course: S88°02'12"E, a distance of 530.52 feet to the point of beginning

REZONE EXHIBIT LOT J OF NORTH VALLEY PARK SUBDIVISION OF SECTION 32, T2N, R8E, B.H.M., CITY OF RAPID CITY, PENNINGTON COUNTY, SOUTH DAKOTA.



LEGEND



MEDIUM DENSITY RESIDENTIAL

RAPID CITY DEPARTMENT OF
COMMUNITY DEVELOPMENT

KTM
DESIGN SOLUTIONS, INC.

628 1/2 6th Street, Suite 201
Rapid City, SD 57701
[P] (605) 791-5866
[F] (605) 791-5863
[E] engneers@ktmids.com

CIVIL ENGINEERING | LAND SURVEYING | LAND PLANNING | PROJECT MANAGEMENT | CONSTRUCTION ADMINISTRATION

www.ktmdesignsolutions.com