

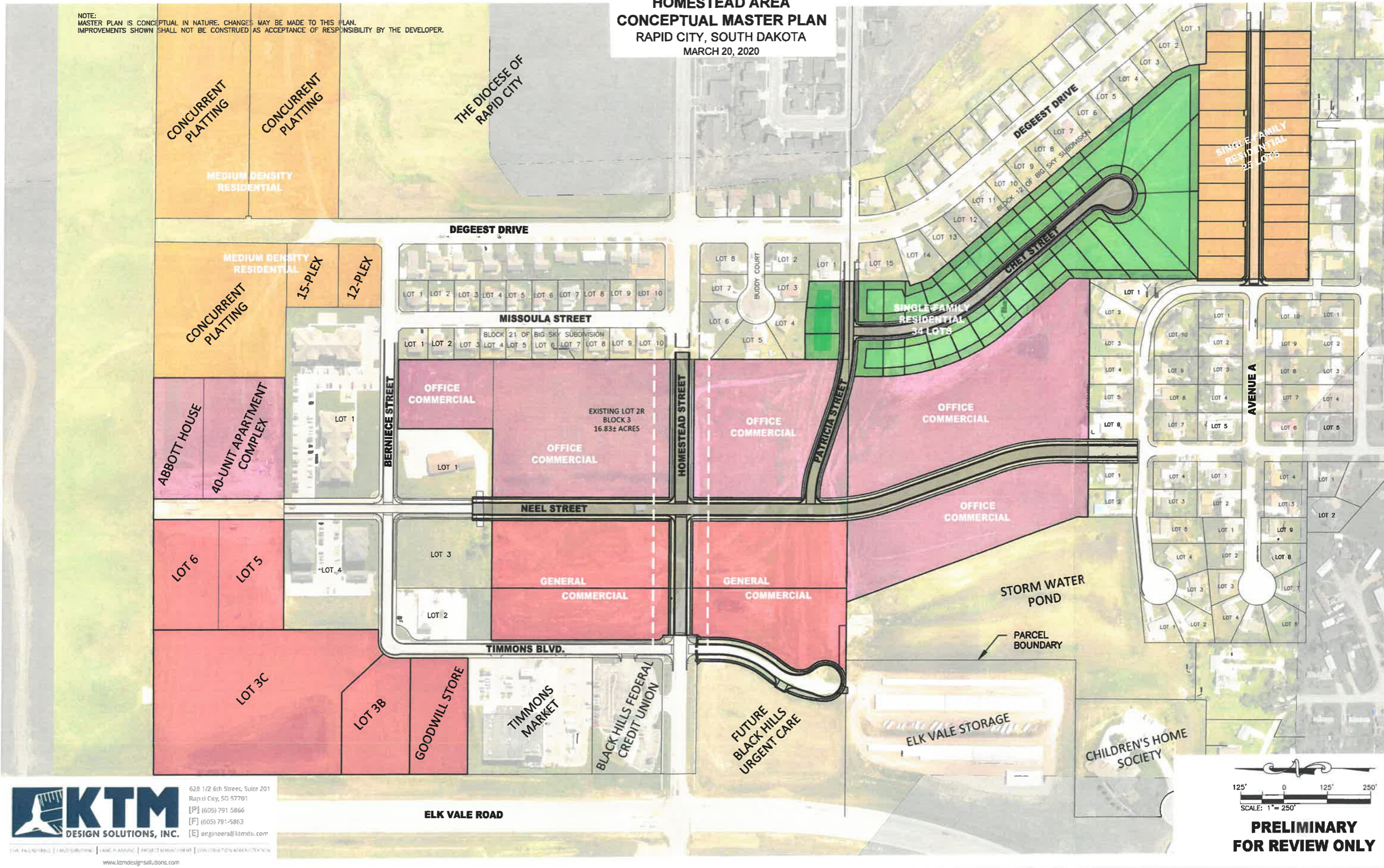
Case No. 20RZ040

Legal Description:

That portion of Lot 2R, Block 3 of Big Sky Business Park, located in Section 3, T1N, R8E, BHM, Rapid City, Pennington County, South Dakota, more fully described as follows: Commencing at the North 1/4 corner of Section 3, T1N, R8E, BHM, Rapid City, Pennington County, South Dakota being monumented by a 1949 GLO brass cap ; thence S34°40'34"W, a distance of 2326.32 feet to the point of beginning, said point also being the northwest corner of Lot 8, Block 21, of Big Sky Subd.; Thence first course: N89°47'04"W, a distance of 432.16 feet; Thence second course: S00°12'56"W, a distance of 660.47 feet; Thence third course: N87°13'11"E, a distance of 16.02 feet; Thence fourth course: S82°06'04"E, a distance of 112.36 feet; Thence fifth course: S71°34'33"E, a distance of 200.93 feet; Thence sixth course: On a curve turning to the left with an arc length of 119.17 feet, with a radius of 605.08 feet, with a chord bearing of S77°31'24"E, with a chord length of 118.98 feet; Thence seventh course: N00°02'28"E, a distance of 762.71 feet to the point of beginning

NOTE:
 MASTER PLAN IS CONCEPTUAL IN NATURE. CHANGES MAY BE MADE TO THIS PLAN.
 IMPROVEMENTS SHOWN SHALL NOT BE CONSTRUED AS ACCEPTANCE OF RESPONSIBILITY BY THE DEVELOPER.

HOMESTEAD AREA
CONCEPTUAL MASTER PLAN
 RAPID CITY, SOUTH DAKOTA
 MARCH 20, 2020



KTM
 DESIGN SOLUTIONS, INC.

628 1/2 6th Street, Suite 201
 Rapid City, SD 57701
 [P] (605) 791-5866
 [F] (605) 791-5863
 [E] engineers@ktmidsi.com

ENGINEERING | LAND SURVEYING | PLANNING | PROJECT MANAGEMENT | CONSTRUCTION ADMINISTRATION

www.ktmdesignsolutions.com

125' 0 125' 250'
 SCALE: 1" = 250'

PRELIMINARY
FOR REVIEW ONLY