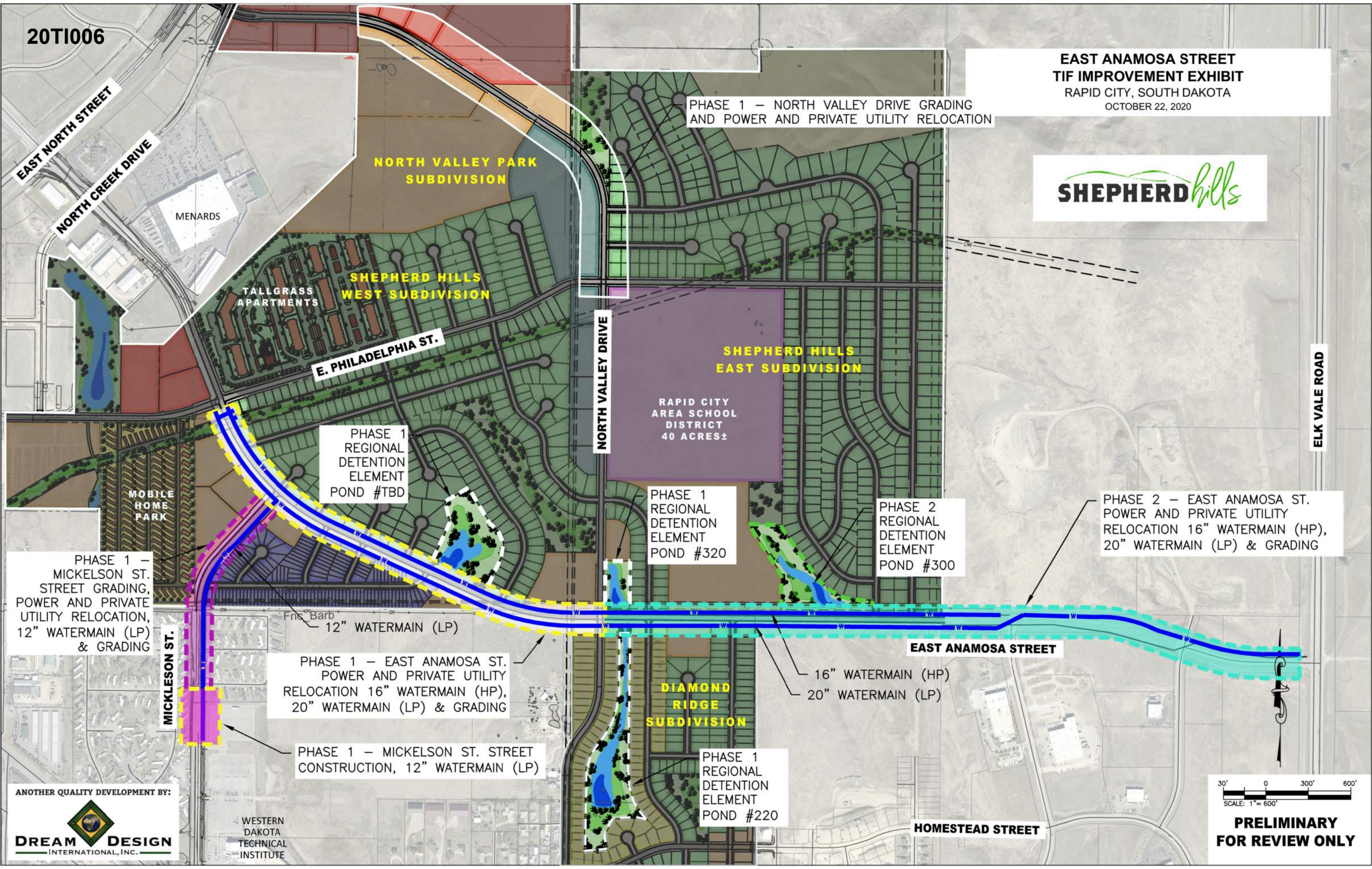


20T1006

**EAST ANAMOSA STREET
TIF IMPROVEMENT EXHIBIT**
RAPID CITY, SOUTH DAKOTA
OCTOBER 22, 2020



EAST NORTH STREET
NORTH CREEK DRIVE

**NORTH VALLEY PARK
SUBDIVISION**

**TALLGRASS
APARTMENTS**
**SHEPHERD HILLS
WEST SUBDIVISION**

E. PHILADELPHIA ST.

PHASE 1 – NORTH VALLEY DRIVE GRADING
AND POWER AND PRIVATE UTILITY RELOCATION

**SHEPHERD HILLS
EAST SUBDIVISION**

RAPID CITY
AREA SCHOOL
DISTRICT
40 ACRES±

NORTH VALLEY DRIVE

ELK VALE ROAD

PHASE 1
REGIONAL
DETENTION
ELEMENT
POND #TBD

PHASE 1
REGIONAL
DETENTION
ELEMENT
POND #320

PHASE 2
REGIONAL
DETENTION
ELEMENT
POND #300

PHASE 2 – EAST ANAMOSA ST.
POWER AND PRIVATE UTILITY
RELOCATION 16" WATERMAIN (HP),
20" WATERMAIN (LP) & GRADING

PHASE 1 –
MICKELSON ST.
STREET GRADING,
POWER AND PRIVATE
UTILITY RELOCATION,
12" WATERMAIN (LP)
& GRADING

MICKELSON ST.

PHASE 1 – EAST ANAMOSA ST.
POWER AND PRIVATE UTILITY
RELOCATION 16" WATERMAIN (HP),
20" WATERMAIN (LP) & GRADING

PHASE 1 – MICKELSON ST. STREET
CONSTRUCTION, 12" WATERMAIN (LP)

**DIAMOND
RIDGE
SUBDIVISION**

PHASE 1
REGIONAL
DETENTION
ELEMENT
POND #220

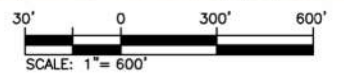
16" WATERMAIN (HP)
20" WATERMAIN (LP)

EAST ANAMOSA STREET

HOMESTEAD STREET



WESTERN
DAKOTA
TECHNICAL
INSTITUTE



**PRELIMINARY
FOR REVIEW ONLY**