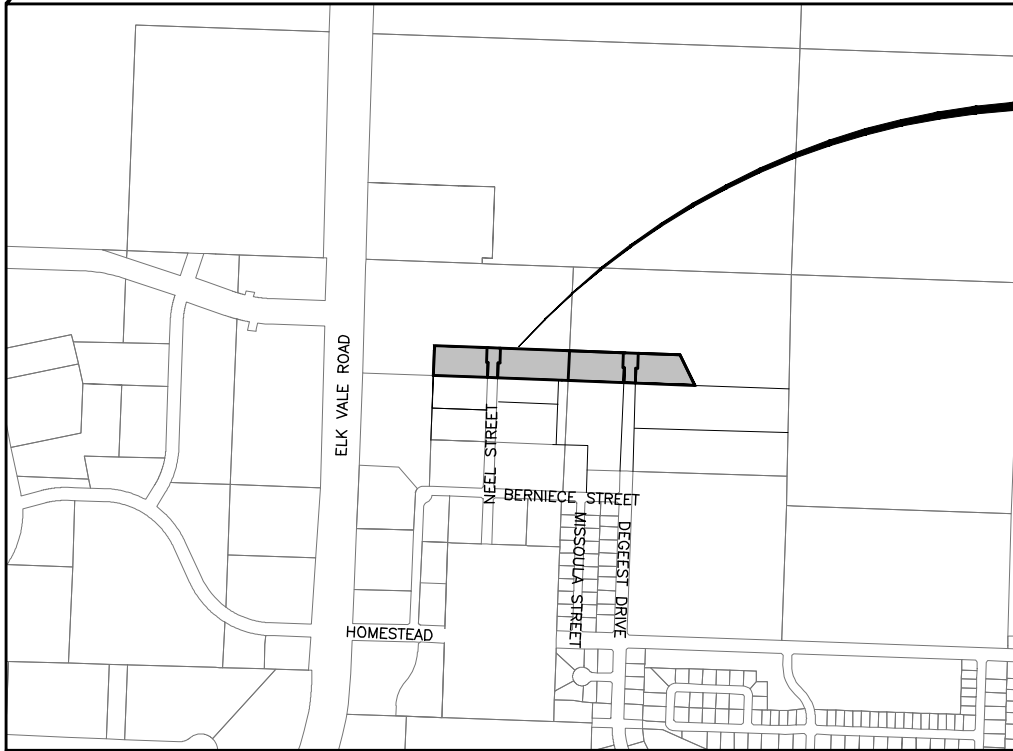
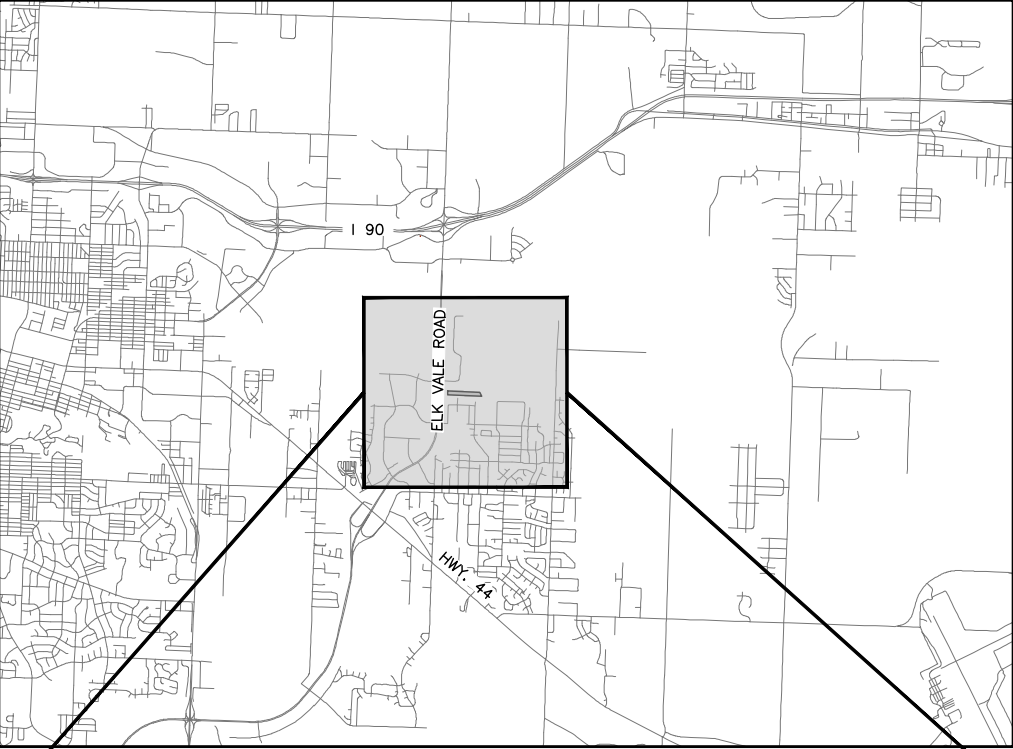


WESTWIND SUBDIVISION  
NEEL STREET AND DEGEEST DRIVE EXTENSION  
STREET AND UTILITY PLAN  
KTM JOB NUMBER: 19-0934.02

CITY OF RAPID CITY  
Plans are reviewed for general conformance with applicable governmental regulations, stipulations, design criteria and engineering standards. The City of Rapid City does not certify the suitability, adequacy or completeness of the plans or design, which are the responsibility of the Engineer of Record. All necessary permits shall be obtained prior to construction of the proposed public improvements.  
Daniel Kools  
Engineering Reviewer  
19PL106  
COMMENTS  
5/1/2020  
Date

ORIGINAL SET: FEBRUARY 2020  
Internal Job No: 18-0934.02  
Designed By: MT  
Drawn By: PM  
Surveyed By: KTM  
11" X 17" PLAN SET  
KTM  
2019

CITY OF RAPID CITY, SOUTH DAKOTA



INDEX OF SHEETS

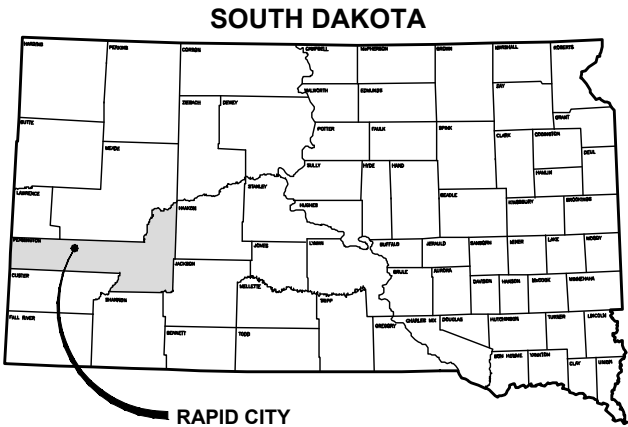
- 1 TITLE SHEET
- 2-6 GENERAL NOTES / LEGENDS / TYPICAL SECTION
- 7 SURVEY CONTROL
- 8 NEEL STREET PROJECT OVERVIEW
- 9 DEGEEST DRIVE PROJECT OVERVIEW
- 10 NEEL STREET GRADING PLAN
- 11 DEGEEST STREET GRADING PLAN
- 12 NEEL STREET PLAN AND PROFILE
- 13 DEGEEST DRIVE PLAN AND PROFILE
- 14-15 WATER MAIN NORTH PLAN AND PROFILE
- 16 CURB AND GUTTER / SIGNAGE PLAN
- 17-18 CATHODIC PROTECTION DETAILS
- 19 DETAILS

EROSION CONTROL PLAN INDEX OF SHEETS

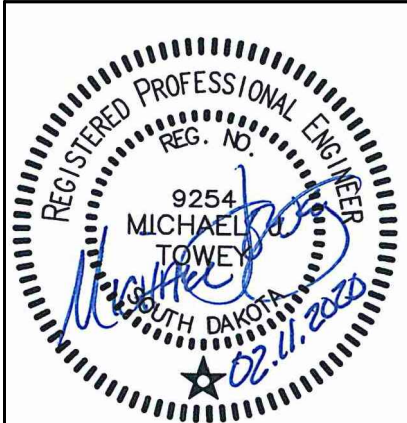
- EC1 EROSION CONTROL TITLE
- EC2-EC3 EROSION CONTROL NOTES
- EC4-EC5 EROSION CONTROL PLAN
- EC6 EROSION CONTROL DETAILS

Schedule Pre-Construction Meeting with CITY CONSTRUCTION SERVICES at 394-4154 Minimum 10 Days prior to start of construction  
Notify CONSTRUCTION SERVICES at 394-4154 at least 48 hours prior to start of construction

PROJECT LOCATION



I, MICHAEL TOWEY, CERTIFY THAT I HAVE READ AND UNDERSTAND THE PROVISIONS CONTAINED IN THE CITY OF RAPID CITY STANDARD SPECIFICATIONS FOR PUBLIC WORKS CONSTRUCTION, CURRENT EDITION AND THE CITY OF RAPID CITY'S ADOPTED DESIGN CRITERIA MANUALS. THE DRAWINGS AND SPECIFICATIONS CONTAINED HERE WITHIN, TO THE BEST OF MY KNOWLEDGE, WERE PREPARED IN ACCORDANCE WITH THESE DOCUMENTS, OR A PROPERLY EXECUTED EXCEPTION TO THE DESIGN STANDARDS HAS BEEN OBTAINED.  
Michael Towey  
02.11.2020  
DATE:



X:\900-449\934 - Bob Quinn Masterplan\18-0934.02 Westwind Sub\Drawings\Sheets\1 COVER SHEET.dwg 4/1/2020 8:45:00am

MARCH 31, 2020  
FH CATHODIC TEST STATIONS

WESTWIND SUBDIVISION  
NEEL STREET AND DEGEEST DRIVE EXTENSION  
STREET AND UTILITY PLAN  
CITY OF RAPID CITY, SOUTH DAKOTA

628 112 6th Street, Suite 201, Rapid City, SD 57701  
Phone: (605) 791-5866 | Fax: (605) 791-5863  
www.ktmsolutions.com  
CIVIL ENGINEERING | LAND SURVEYING  
LAND PLANNING | PROJECT MANAGEMENT  
CONSTRUCTION ADMINISTRATION

TITLE SHEET



SHEET NO.  
1

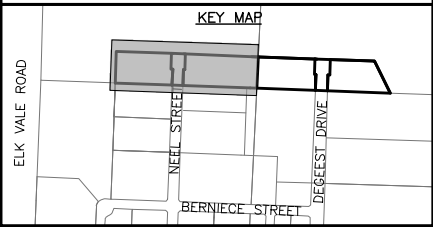
X:\900-449\934 - Bob Quinn Masterplan\18-0934.E02 Westwind Sub\Drawings\Sheets\8 DEGEEST DRIVE PROJECT OVERVIEW.dwg 4/1/2020 8:58am

CITY OF RAPID CITY  
Plans are reviewed for general conformance with applicable governmental regulations, stipulations, design criteria and engineering standards. The City of Rapid City does not certify the suitability, adequacy or completeness of the plans or design, which are the responsibility of the Engineer of Record. All necessary permits shall be obtained prior to construction of the proposed public improvements.

Daniel Kools  
Engineering Reviewer  
19PL106

5/1/2020  
Date

COMMENTS



ORIGINAL SET: FEBRUARY 2020
Internal Job No: 18-0934.02
Drawn By: PM
Designed By: MT
Surveyed By: KTM
Survey Date: 2019

REVISIONS:
1. MARCH 31, 2020 FH CATHODIC TEST STATIONS

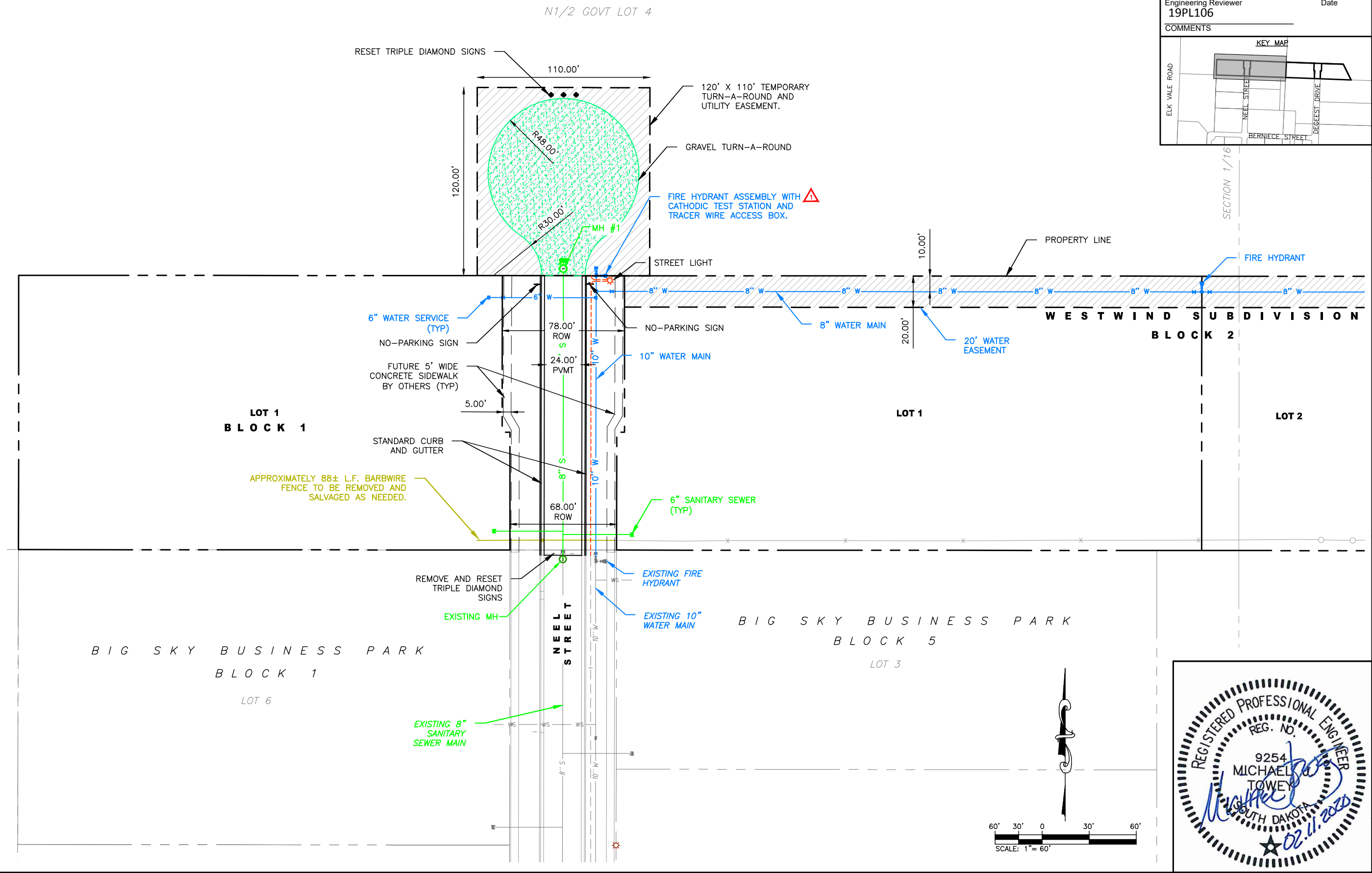
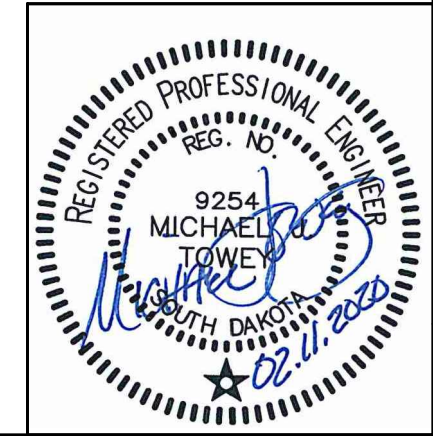
WESTWIND SUBDIVISION  
NEEL STREET AND DEGEEST DRIVE EXTENSION  
STREET AND UTILITY PLAN  
CITY OF RAPID CITY, SOUTH DAKOTA

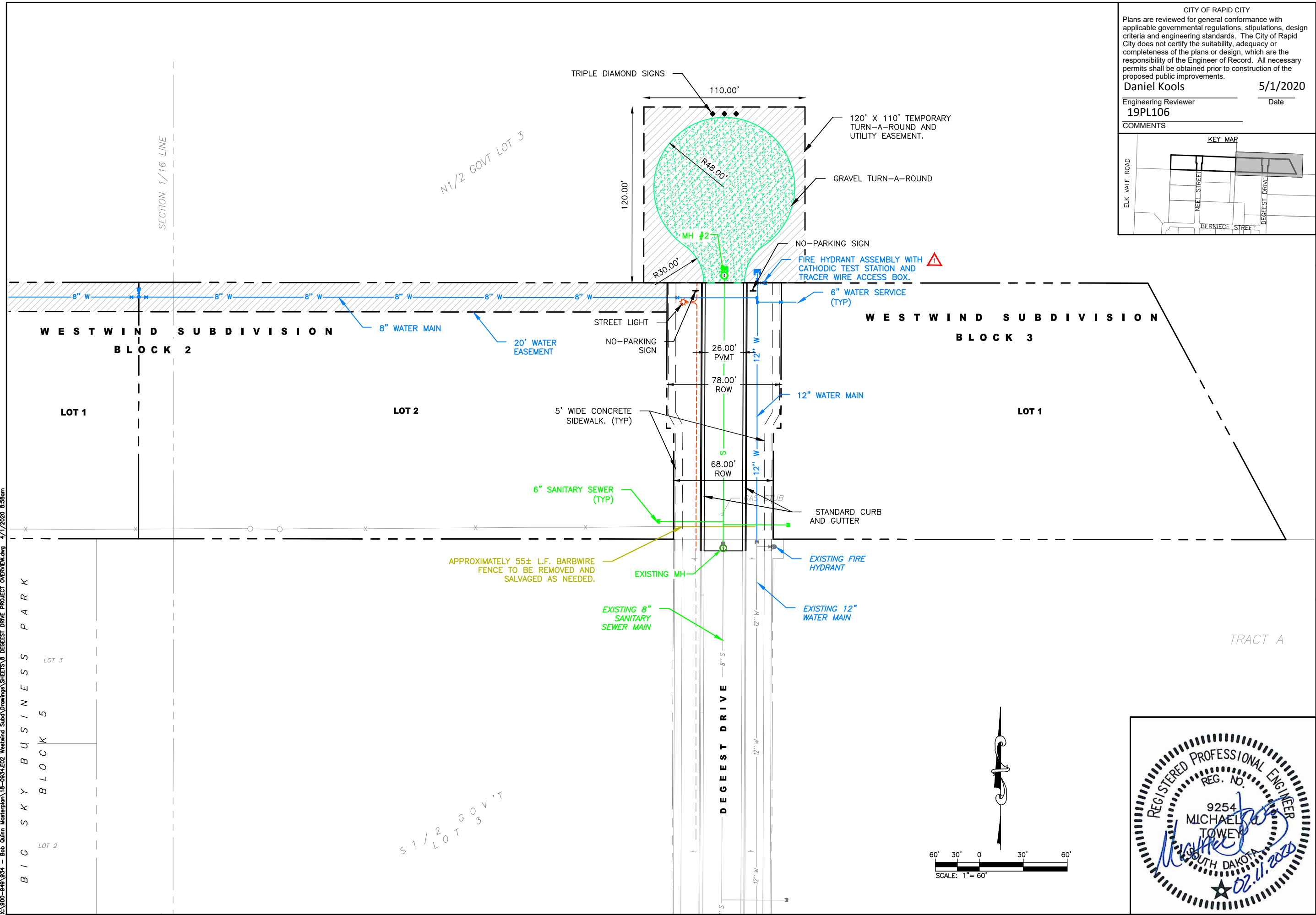
NEEL STREET PROJECT OVERVIEW

628 112 6th Street, Suite 201, Rapid City, SD 57701  
Phone: (605) 791-5866 | Fax: (605) 791-5863  
www.ktmdesignsolutions.com  
CIVIL ENGINEERING | LAND SURVEYING  
LAND PLANNING | PROJECT MANAGEMENT  
CONSTRUCTION ADMINISTRATION

**KTM**  
DESIGN SOLUTIONS, INC.

SHEET NO.  
8





CITY OF RAPID CITY

Plans are reviewed for general conformance with applicable governmental regulations, stipulations, design criteria and engineering standards. The City of Rapid City does not certify the suitability, adequacy or completeness of the plans or design, which are the responsibility of the Engineer of Record. All necessary permits shall be obtained prior to construction of the proposed public improvements.

5/1/2020

**Daniel Kools**

---

Engineering Reviewer

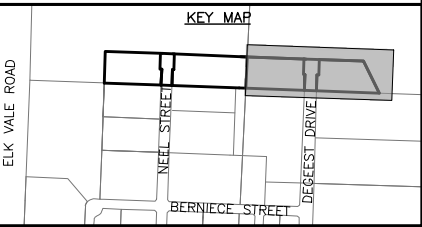
**19PL106**


---

Date

---

**COMMENTS**



 <b>MARCH 31, 2020</b> <b>FH CATHODIC TEST STATIONS</b>	ORIGINAL SET: FEBRUARY 2020			
	Internal Job No:	18-0934.02	Designed By:	MT
			Drawn By:	PM
			Surveyed By:	Survey Date:
			11" X 17" PLAN SET	KTM
				2019
<b>REVISIONS:</b>				

WESTWIND SUBDIVISION  
NEEL STREET AND DEGEEST DRIVE EXTENSION  
STREET AND UTILITY PLAN  
CITY OF RAPID CITY, SOUTH DAKOTA

SHEET NO.

9

DEGEEST DRIVE PROJECT OVERVIEW



**KTM**

**DESIGN SOLUTIONS, INC.**

628 1/2 6th Street, Suite 201, Rapid City, SD 57101

Phone: (605) 791-5866 | Fax: (605) 791-5863

[www.ktmdesignsolutions.com](http://www.ktmdesignsolutions.com)

CIVIL ENGINEERING

LAND SURVEYING

LAND PLANNING

PROJECT MANAGEMENT

CONSTRUCTION ADMINISTRATION