



DOWNTOWN • 610 Quincy St. Rapid City, SD 57701 • (605) 394-6139 or (605) 394-4171
NORTH • 10 Van Buren St. Rapid City, SD 57701 • (605) 716-4098

Date: May 9, 2016
To: Rapid City Public Libraries Board of Trustees
From: Kimberly Beck, Administrative and Facilities Coordinator
Re: Monthly Financial Executive Summary
Period Ending April 30, 2016

Rapid City Public Libraries' year to date fines and fees revenues, as reflected in [Figure 1](#), totaled \$20,413. This is a decrease of 25% compared to the previous year (2015).

1. Revenue from non-resident cards – A increase in revenue of 3% compared to last year. We currently have 476 non-county users registered.
2. Revenue from copies – There is an increase of 13% for copies this year compared to last year.
3. Revenue from fines – Decreased 33% from this point last year for a difference of \$5,171.
4. Revenue from meeting room fees – Decreased \$165 from this time last year.
5. Revenue from 3D prints and proctoring – Revenue for these two items are \$444 and \$25 respectfully.

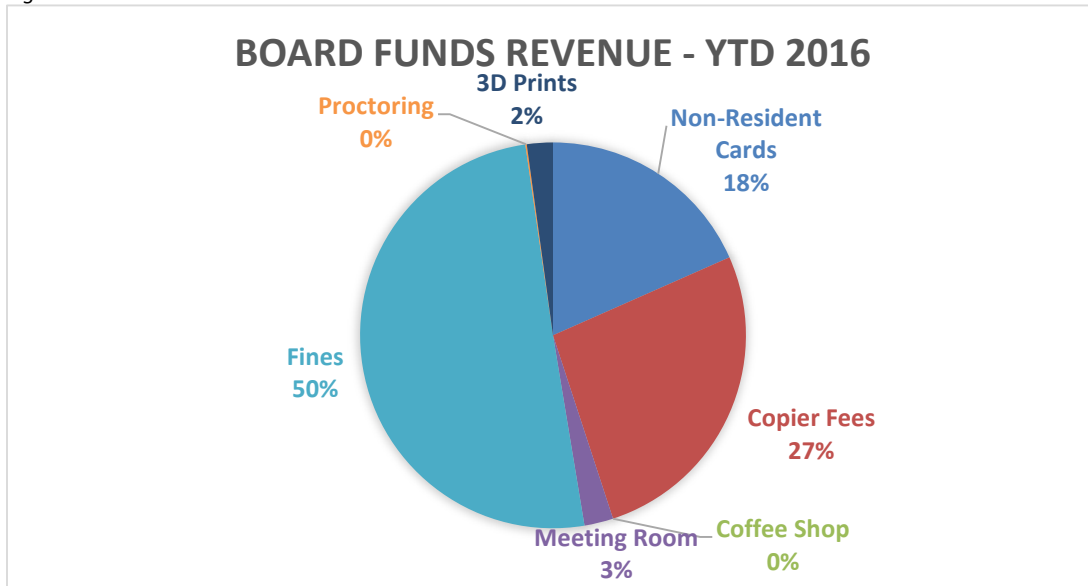
Total expenditures and encumbrances¹ through April were \$1,216,199 as reflected in [Figure 2](#). With a budget established at \$3.8 million, approximately 31% was expended as of the end of April. (See [Table 1](#))

1. Salary, Wages and Benefits - Actual expenditures at the end of April 2016 for Salaries, Wages and Benefits totaled \$647,253. This is 3% lower than last year at this time.
2. Insurance – Expenses in these line items decreased by \$2,371 under the previous year. Actual expenditures in this line item are \$22,684.
3. Professional service expenditures – Increased 4% as compared to the prior year. Expenditures in this line item include facility maintenance services (i.e. window cleaning, HVAC maintenance and pest control), and security services. Security services were added towards the end of last year at the North Library.
4. Rentals – Increased \$1,860 since this time last year. Rentals include our costs for leased parking as well as equipment rentals and leased equipment. Our contract costs for copiers have increased over last year by about 3%, plus some costs from last year were carried over to this year's budget.
5. Repair & maintenance – Decreased 81% compared to the previous year. This line item is for repair costs of both the downtown facility (structure) and equipment, as well as the Integrated Library System. The new ILS, KOHA, is less cost than our previous Millennium service.
6. Supplies & materials – Decreased 28% since this time in 2015. Purchases include office supplies, gasoline, facilities uniforms, janitorial supplies, tools, tires, and facility equipment. These purchases are made according to the replacement schedule.

¹ Encumbrances: Obligations in the form of purchase orders, contracts or salary commitments which are chargeable to an appropriation and for which a part of the appropriation is reserved. Obligations cease to be encumbrances when paid or when the actual liability is set up.

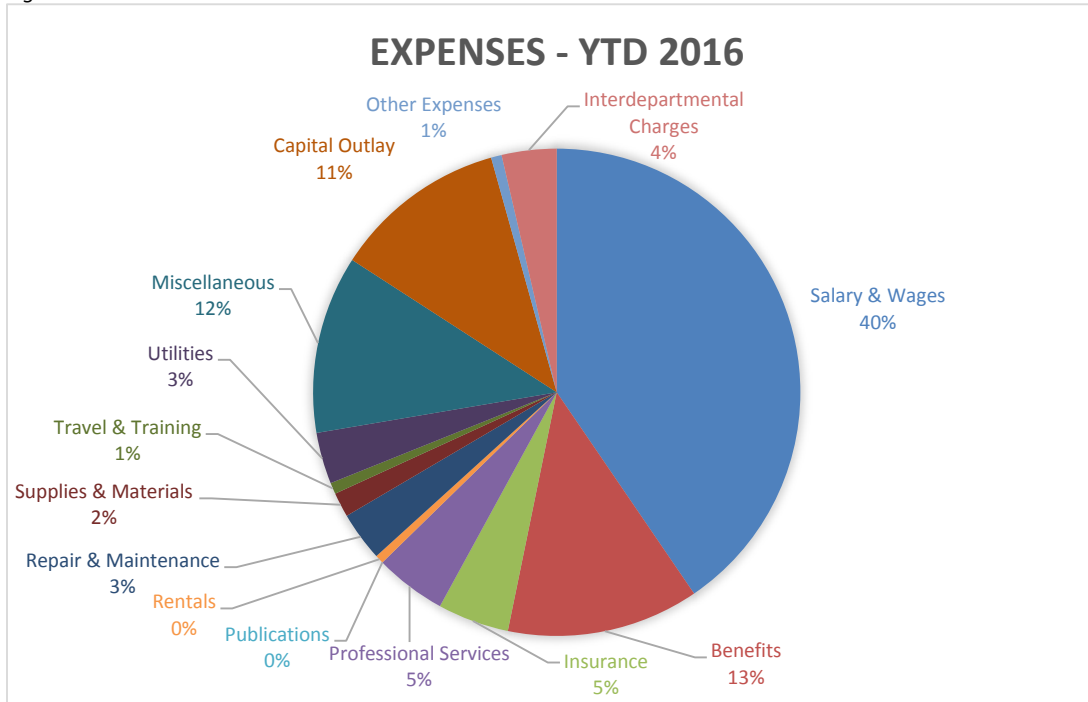
7. Travel & Training – Total expenditures in this line item are \$1,375. Conferences and trainings are scheduled according to the travel and training plan.
8. Utilities – Increased \$82 compared to expenditures for this time last year. Utilities include telephone, internet, natural gas and electricity. The library is experiencing lower costs in electricity due to our energy saving initiatives, including the switching of monitoring of the HVAC to the Energy Plant. However, we have increased our bandwidth, which accounts for the higher costs in this line.
9. Miscellaneous – Decreased 11% under 2015. Expenditures out of this line item include subscriptions to periodicals for patron browsing, programming materials, computers and software and office equipment and these are made according to the technology and equipment replacement schedule. This is an authorized line item name, and planned expenditures that don't fit in any other line item go here.
10. Capital Outlay – Increased 2% as compared to last year. This line item includes planned purchases for books and other library materials, as well as building improvements and vehicles.
11. Other expenses – Increased 135%, or \$4,909 over last year. This is a pass-thru line item for the Friends of the Library Book Sale area and does not affect the bottom line. The Friends of the Library Book Shop will now be open all hours the Library is open.

Figure 1



Total Revenues: \$20,413

Figure 2



Total Expenditures: \$1,216,199

Table 1

**YTD Expense Comparison
as of 4/30/16**

	YTD '15	YTD '16	More or (Less) than 2014	% +/-
Salary & Wages	570,272	492,177	(78,095)	-14%
Benefits	96,561	155,076	58,515	61%
Insurance	25,055	22,684	(2,371)	-9%
Professional Services	55,285	57,605	2,320	4%
Rentals	5,131	6,991	1,860	36%
Repair & Maintenance	212,467	39,774	(172,693)	-81%
Supplies & Materials	27,660	19,868	(7,792)	-28%
Travel & Training	7,728	9,103	1,375	18%
Utilities	41,408	41,490	82	0%
Miscellaneous	161,165	143,584	(17,581)	-11%
Capital Outlay	138,046	140,120	2,074	2%
Other Expenses	3,645	8,554	4,909	135%

Table 2

**Monthly Vacancy Status Report
as of 4/30/16**

LIBRARY DEPARTMENT	FULL AND PART- TIME POSITIONS	FULL AND PART-TIME EMPLOYEES	VACANCIES
Management	2	2	-
Librarian Is	3	3	-
Managers	1	-	1
Coordinators	3	2	1
Business Office	2	2	-
Facilities	3	3	-
Library Associates	22	21	1
Customer Service Associates	6	6	-
Outreach	4	4	-
TOTALS	46	43	3

NOTE: Data excludes temporary classifications.

Year to Date Expense Report
as of 04/30/16

Dept. 0609, 0610, 0971

	Total Year To			
	Date			
	Current Year Working Budget	Encumbrance and Expense	Remaining Budget Balance	Percent Budget Remaining
4110 Salary & Wages	\$ 1,612,986	\$ 482,136	\$ 1,130,850	70%
4111 Overtime Wages	-	667	(667)	0%
4118 Temporary Wages	31,481	9,374	22,107	70%
4100 Salary & Wages	1,644,467	492,177	1,152,290	70%
4120 Social Security	101,610	28,995	72,615	71%
4121 Medicare	23,763	6,781	16,982	71%
4130 Retirement	96,443	39,451	56,992	59%
4131 Section 125 Administration	1,110	141	969	87%
4140 Workmens Comp	3,475	3,054	421	12%
4150 Group Health Insurance	194,564	76,092	118,472	61%
4155 Group Life Insurance	1,803	562	1,241	69%
4170 Unemployment Insurance	1,599	-	1,599	100%
4110 Benefits	424,367	155,076	269,291	63%
4211 General & Auto Liability	6,864	4,552	2,312	34%
4212 Boiler Coverage	1,506	-	1,506	100%
4214 Other Insurance	22,660	18,132	4,528	20%
4210 Insurance	31,030	22,684	8,346	27%
4223 Consultant Services	21,260	10,600	10,660	50%
4225 Other Professional Services	113,602	47,005	66,597	59%
4229 Marketing	1,135	-	1,135	0%
4220 Professional Services	135,997	57,605	78,392	58%
4230 Publishing	1,026	-	1,026	100%
4230 Publications	1,026	-	1,026	100%
4243 Machinery Rentals	4,189	-	4,189	100%
4244 Lease/Purchases	14,250	5,647	8,603	60%
4246 Other Rentals	3,581	1,344	2,237	62%
4240 Rentals	22,020	6,991	15,029	68%
4251 Repair - Roll Stock	1,571	90	1,481	94%
4252 Repair - Structures	43,797	8,935	34,862	80%
4253 Repair - Equipment	28,852	5,201	23,651	82%
4255 Repair - Water & Sewer	641	-	641	100%
4259 Miscellaneous	92,224	25,548	66,676	72%
4250 Repair & Maintenance	167,085	39,774	127,311	76%
4261 Office Supplies	42,210	14,233	27,977	66%
4262 Gasoline, Oil, Fuel	2,584	495	2,089	81%
4263 Clothing, Food	1,514	366	1,148	76%
4264 Janitor & Chemical Supplies	25,901	4,627	21,274	82%
4265 Minor Tools	4,200	127	4,073	97%
4266 Agricultural Supply	-	-	-	0%
4267 Tires	800	-	800	100%
4269 Misc Supplies & Materials	-	20	(20)	0%
4260 Supplies & Materials	77,209	19,868	57,341	74%
4270 Travel & Training	22,310	9,103	13,207	59%
4270 Travel & Training	22,310	9,103	13,207	59%
4281 Telephone - Local	46,440	7,955	38,485	83%
4282 Natural Gas	18,053	8,423	9,630	53%
4283 Electricity	106,206	25,112	81,094	76%
4280 Utilities	170,699	41,490	129,209	76%
4292 Dues	2,501	770	1,731	69%
4293 Subscriptions	92,338	76,635	15,703	17%
4294 Other Miscellaneous Expenses	25,696	10,837	14,859	58%
4295 Computers & Software	176,860	44,176	132,684	75%
4296 Office Equipment	33,727	11,166	22,561	67%
4290 Miscellaneous	331,122	143,584	187,538	57%
4320 Buildings & Structures	94,735	-	94,735	100%
4341 General Materials	165,460	55,942	109,518	66%
4342 Books/AV Processing	19,124	5,802	13,322	70%
4345 Electronic Resources	138,946	38,413	100,533	72%
4346 DVDs	34,901	10,822	24,079	69%
4348 Interactive Materials	-	3,271	(3,271)	0%
4350 Furniture & Minor Equipment	45,700	-	45,700	100%
4390 Vehicles	125,000	25,870	99,130	79%
4300 Capital Outlay	623,866	140,120	483,746	6
4530 Refund or Reimbursement	17,046	8,554	8,492	50%
4500 Other Expenses	17,046	8,554	8,492	50%
*SUB-TOTAL	3,668,244	1,137,026	2,531,218	69%
4226 Interdepartmental Charges	139,841	44,252	95,589	68%
4226 Interdepartmental Charges	139,841	44,252	95,589	68%
*SUB-TOTAL	3,808,085	1,181,278	2,626,807	69%
**Total LIBRARY	\$ 3,808,085	\$ 1,181,278	\$ 2,626,807	69%

The City of Rapid City
Bill List by Vendor - Detail

Vendor #	Invoice #	PO #	Vendor Name	GL Account	Line Item Description	Line Item Amount
7810	1602.5	33142	ACV2 ARCHITECTURE LLC	10100609-422300	CONSULTING	10,600.00
					ACV2 ARCHITECTURE LLC Total:	10,600.00
7956	04/13/16	36676	ANTONMARCHI, LAUREL	10100609-422500	PROGRAMMING	50.00
					ANTONMARCHI, LAUREL Total:	50.00
356	2031785603	35009	BAKER & TAYLOR BOOKS	10100610-434100	GENERAL MATERIALS	171.06
	2031785603	35009	BAKER & TAYLOR BOOKS	10100610-434200	GENERAL MATERIALS	7.65
	2031781754	35010	BAKER & TAYLOR BOOKS	10100610-434100	GENERAL MATERIALS	10.07
	2031781754	35010	BAKER & TAYLOR BOOKS	10100610-434200	GENERAL MATERIALS	1.05
	2031801248	35632	BAKER & TAYLOR BOOKS	10100610-434200	GENERAL MATERIALS	53.75
	2031801253	35627	BAKER & TAYLOR BOOKS	10100610-434100	GENERAL MATERIALS	31.36
	2031801253	35627	BAKER & TAYLOR BOOKS	10100610-434200	GENERAL MATERIALS	2.10
	2031805692	35643	BAKER & TAYLOR BOOKS	10100609-434100	GENERAL MATERIALS	597.13
	2031805692	35643	BAKER & TAYLOR BOOKS	10100609-434200	GENERAL MATERIALS	45.35
	2031805694	35642	BAKER & TAYLOR BOOKS	10100609-434100	GENERAL MATERIALS	14.18
	2031805694	35642	BAKER & TAYLOR BOOKS	10100609-434200	GENERAL MATERIALS	1.05
	2031842679	36355	BAKER & TAYLOR BOOKS	10100609-434100	GENERAL MATERIALS	106.34

356	2031842679	36355	BAKER & TAYLOR BOOKS	10100609-434200	GENERAL MATERIALS	7.35
	2031832089	36346	BAKER & TAYLOR BOOKS	10100609-434100	GENERAL MATERIALS	48.40
	2031832089	36346	BAKER & TAYLOR BOOKS	10100609-434200	GENERAL MATERIALS	1.30
	2031832086	36343	BAKER & TAYLOR BOOKS	10100609-434100	GENERAL MATERIALS	12.29
	2031832086	36343	BAKER & TAYLOR BOOKS	10100609-434200	GENERAL MATERIALS	1.05
	2031832085	36342	BAKER & TAYLOR BOOKS	10100609-434100	GENERAL MATERIALS	9.00
	2031832085	36342	BAKER & TAYLOR BOOKS	10100609-434200	GENERAL MATERIALS	0.25
	2031832080	36337	BAKER & TAYLOR BOOKS	10100609-434100	GENERAL MATERIALS	86.84
	2031832080	36337	BAKER & TAYLOR BOOKS	10100609-434200	GENERAL MATERIALS	5.50
	2031832079	36336	BAKER & TAYLOR BOOKS	10100609-434100	GENERAL MATERIALS	239.48
	2031832079	36336	BAKER & TAYLOR BOOKS	10100609-434200	GENERAL MATERIALS	7.65
	2031868888	36466	BAKER & TAYLOR BOOKS	10100609-434100	GENERAL MATERIALS	21.39
	2031868888	36466	BAKER & TAYLOR BOOKS	10100609-434200	GENERAL MATERIALS	0.40
	2031864840	36477	BAKER & TAYLOR BOOKS	10100609-434100	GENERAL MATERIALS	34.40
	2031864840	36477	BAKER & TAYLOR BOOKS	10100609-434200	GENERAL MATERIALS	2.90
	2031864841	36476	BAKER & TAYLOR BOOKS	10100609-434100	GENERAL MATERIALS	208.36
	2031864841	36476	BAKER & TAYLOR BOOKS	10100609-434200	GENERAL MATERIALS	13.90
	2031868883	36472	BAKER & TAYLOR BOOKS	10100609-434100	GENERAL MATERIALS	14.39
	2031868883	36472	BAKER & TAYLOR BOOKS	10100609-434200	GENERAL MATERIALS	0.40

356	2031781753	35011	BAKER & TAYLOR BOOKS	10100610-426400	GENERAL MATERIALS	14.21
	2031781753	35011	BAKER & TAYLOR BOOKS	10100610-434200	GENERAL MATERIALS	1.05
	2031781750	35014	BAKER & TAYLOR BOOKS	10100610-434100	GENERAL MATERIALS	19.34
	2031781750	35014	BAKER & TAYLOR BOOKS	10100610-434200	GENERAL MATERIALS	1.45
	2031796874	35634	BAKER & TAYLOR BOOKS	10100610-434100	GENERAL MATERIALS	15.67
	2031796874	35634	BAKER & TAYLOR BOOKS	10100610-434200	GENERAL MATERIALS	1.05
	2031801250	35630	BAKER & TAYLOR BOOKS	10100610-434100	GENERAL MATERIALS	14.37
	2031801250	35630	BAKER & TAYLOR BOOKS	10100610-434200	GENERAL MATERIALS	0.25
	2031801254	35626	BAKER & TAYLOR BOOKS	10100610-434100	GENERAL MATERIALS	15.68
	2031801254	35626	BAKER & TAYLOR BOOKS	10100610-434200	GENERAL MATERIALS	1.05
	2031805691	35644	BAKER & TAYLOR BOOKS	10100609-434100	GENERAL MATERIALS	73.91
	2031805691	35644	BAKER & TAYLOR BOOKS	10100609-434200	GENERAL MATERIALS	5.25
	2031819123	35736	BAKER & TAYLOR BOOKS	10100609-434100	GENERAL MATERIALS	11.51
	2031819123	35736	BAKER & TAYLOR BOOKS	10100609-434200	GENERAL MATERIALS	0.80
	2031819121	35739	BAKER & TAYLOR BOOKS	10100609-434100	GENERAL MATERIALS	89.85
	2031819121	35739	BAKER & TAYLOR BOOKS	10100609-434200	GENERAL MATERIALS	2.25
	2031832076	36362	BAKER & TAYLOR BOOKS	10100609-434100	GENERAL MATERIALS	14.36
	2031832076	36362	BAKER & TAYLOR BOOKS	10100609-434200	GENERAL MATERIALS	0.40
	2031842683	36358	BAKER & TAYLOR BOOKS	10100609-434100	GENERAL MATERIALS	15.11

356	2031842683	36358	BAKER & TAYLOR BOOKS	10100609-434200	GENERAL MATERIALS	0.90
	2031842676	36352	BAKER & TAYLOR BOOKS	10100609-434100	GENERAL MATERIALS	94.51
	2031842676	36352	BAKER & TAYLOR BOOKS	10100609-434200	GENERAL MATERIALS	6.30
	2031842674	36350	BAKER & TAYLOR BOOKS	10100609-434100	GENERAL MATERIALS	75.94
	2031842674	36350	BAKER & TAYLOR BOOKS	10100609-434200	GENERAL MATERIALS	3.65
	2031842673	36349	BAKER & TAYLOR BOOKS	10100609-434100	GENERAL MATERIALS	14.00
	2031842673	36349	BAKER & TAYLOR BOOKS	10100609-434200	GENERAL MATERIALS	1.05
	2031832090	36347	BAKER & TAYLOR BOOKS	10100609-434100	GENERAL MATERIALS	73.64
	2031832090	36347	BAKER & TAYLOR BOOKS	10100609-434200	GENERAL MATERIALS	3.55
	2031832077	36465	BAKER & TAYLOR BOOKS	10100609-434100	GENERAL MATERIALS	83.19
	2031832077	36465	BAKER & TAYLOR BOOKS	10100609-434200	GENERAL MATERIALS	4.30
	2031842682	36464	BAKER & TAYLOR BOOKS	10100609-434100	GENERAL MATERIALS	14.47
	2031868886	36469	BAKER & TAYLOR BOOKS	10100609-434100	GENERAL MATERIALS	15.19
	2031868886	36469	BAKER & TAYLOR BOOKS	10100609-434200	GENERAL MATERIALS	0.40
	2031864842	36475	BAKER & TAYLOR BOOKS	10100609-434100	GENERAL MATERIALS	326.60
	2031864842	36475	BAKER & TAYLOR BOOKS	10100609-434200	GENERAL MATERIALS	11.15
	2031864843	36474	BAKER & TAYLOR BOOKS	10100609-434100	GENERAL MATERIALS	43.36
	2031864843	36474	BAKER & TAYLOR BOOKS	10100609-434200	GENERAL MATERIALS	1.95
	2031854425	36489	BAKER & TAYLOR BOOKS	10100609-434100	GENERAL MATERIALS	14.95

356	2031785607	35005	BAKER & TAYLOR BOOKS	10100610-434200	GENERAL MATERIALS	0.80
	2031785605	35007	BAKER & TAYLOR BOOKS	10100610-434100	GENERAL MATERIALS	78.45
	2031785605	35007	BAKER & TAYLOR BOOKS	10100610-434200	GENERAL MATERIALS	2.20
	2031785604	35008	BAKER & TAYLOR BOOKS	10100610-434100	GENERAL MATERIALS	14.40
	2031785604	35008	BAKER & TAYLOR BOOKS	10100610-434200	GENERAL MATERIALS	0.25
	2031781749	35015	BAKER & TAYLOR BOOKS	10100610-434100	GENERAL MATERIALS	57.61
	2031781749	35015	BAKER & TAYLOR BOOKS	10100610-434200	GENERAL MATERIALS	4.20
	2031801252	35628	BAKER & TAYLOR BOOKS	10100610-434100	GENERAL MATERIALS	96.78
	2031801252	35628	BAKER & TAYLOR BOOKS	10100610-434200	GENERAL MATERIALS	5.70
	2031801255	35625	BAKER & TAYLOR BOOKS	10100610-434100	GENERAL MATERIALS	25.22
	2031801255	35625	BAKER & TAYLOR BOOKS	10100610-434200	GENERAL MATERIALS	0.40
	2031805688	35618	BAKER & TAYLOR BOOKS	10100610-434100	GENERAL MATERIALS	37.91
	2031805688	35618	BAKER & TAYLOR BOOKS	10100610-434200	GENERAL MATERIALS	1.45
	2031805689	35591	BAKER & TAYLOR BOOKS	10100610-434100	GENERAL MATERIALS	10.07
	2031805689	35591	BAKER & TAYLOR BOOKS	10100610-434200	GENERAL MATERIALS	1.05
	2031809729	35620	BAKER & TAYLOR BOOKS	10100609-434100	GENERAL MATERIALS	77.28
	2031809729	35620	BAKER & TAYLOR BOOKS	10100609-434200	GENERAL MATERIALS	3.70
	2031819119	35741	BAKER & TAYLOR BOOKS	10100609-434100	GENERAL MATERIALS	15.11
	2031819119	35741	BAKER & TAYLOR BOOKS	10100609-434200	GENERAL MATERIALS	1.05

356	2031819118	35742	BAKER & TAYLOR BOOKS	10100609-434100	GENERAL MATERIALS	18.95
	2031819118	35742	BAKER & TAYLOR BOOKS	10100609-434200	GENERAL MATERIALS	0.25
	2031809734	35743	BAKER & TAYLOR BOOKS	10100609-434100	GENERAL MATERIALS	21.05
	2031809734	35743	BAKER & TAYLOR BOOKS	10100609-434200	GENERAL MATERIALS	0.40
	2031819129	35903	BAKER & TAYLOR BOOKS	10100609-434100	GENERAL MATERIALS	18.46
	2031819129	35903	BAKER & TAYLOR BOOKS	10100609-434200	GENERAL MATERIALS	1.95
	2031819127	35905	BAKER & TAYLOR BOOKS	10100609-434100	GENERAL MATERIALS	16.19
	2031819127	35905	BAKER & TAYLOR BOOKS	10100609-434200	GENERAL MATERIALS	0.40
	2031819130	35902	BAKER & TAYLOR BOOKS	10100609-434100	GENERAL MATERIALS	23.75
	2031819130	35902	BAKER & TAYLOR BOOKS	10100609-434200	GENERAL MATERIALS	1.05
	2031868889	36463	BAKER & TAYLOR BOOKS	10100609-434100	GENERAL MATERIALS	85.40
	2031868889	36463	BAKER & TAYLOR BOOKS	10100609-434200	GENERAL MATERIALS	2.25
	2031854426	36488	BAKER & TAYLOR BOOKS	10100609-434100	GENERAL MATERIALS	74.48
	2031854426	36488	BAKER & TAYLOR BOOKS	10100609-434200	GENERAL MATERIALS	3.30
	2031854258	36515	BAKER & TAYLOR BOOKS	10100609-434100	GENERAL MATERIALS	15.67
	2031854258	36515	BAKER & TAYLOR BOOKS	10100609-434200	GENERAL MATERIALS	1.05
	2031854264	36507	BAKER & TAYLOR BOOKS	10100609-434100	GENERAL MATERIALS	10.63
	2031854264	36507	BAKER & TAYLOR BOOKS	10100609-434200	GENERAL MATERIALS	1.05
	2031785606	35006	BAKER & TAYLOR BOOKS	10100610-434100	GENERAL MATERIALS	10.19

356	2031785606	35006	BAKER & TAYLOR BOOKS	10100610-434200	GENERAL MATERIALS	0.40
	2031781748	35016	BAKER & TAYLOR BOOKS	10100610-434100	GENERAL MATERIALS	9.60
	2031781748	35016	BAKER & TAYLOR BOOKS	10100610-434200	GENERAL MATERIALS	0.40
	2031801247	35633	BAKER & TAYLOR BOOKS	10100610-434100	GENERAL MATERIALS	13.79
	2031801247	35633	BAKER & TAYLOR BOOKS	10100610-434200	GENERAL MATERIALS	0.25
	2031805690	35590	BAKER & TAYLOR BOOKS	10100610-434100	GENERAL MATERIALS	4.79
	2031805690	35590	BAKER & TAYLOR BOOKS	10100610-434200	GENERAL MATERIALS	0.40
	2031809724	35616	BAKER & TAYLOR BOOKS	10100609-434100	GENERAL MATERIALS	23.75
	2031809724	35616	BAKER & TAYLOR BOOKS	10100609-434200	GENERAL MATERIALS	0.40
	2031805695	35641	BAKER & TAYLOR BOOKS	10100609-434100	GENERAL MATERIALS	22.52
	2031805695	35641	BAKER & TAYLOR BOOKS	10100609-434200	GENERAL MATERIALS	0.40
	2031805696	35640	BAKER & TAYLOR BOOKS	10100609-434100	GENERAL MATERIALS	13.29
	2031805696	35640	BAKER & TAYLOR BOOKS	10100609-434200	GENERAL MATERIALS	0.40
	2031819122	35737	BAKER & TAYLOR BOOKS	10100609-434100	GENERAL MATERIALS	13.30
	2031819122	35737	BAKER & TAYLOR BOOKS	10100609-434200	GENERAL MATERIALS	0.25
	2031809733	35744	BAKER & TAYLOR BOOKS	10100609-434100	GENERAL MATERIALS	8.39
	2031809733	35744	BAKER & TAYLOR BOOKS	10100609-434200	GENERAL MATERIALS	0.25
	2031819128	35904	BAKER & TAYLOR BOOKS	10100609-434100	GENERAL MATERIALS	15.11
	2031819128	35904	BAKER & TAYLOR BOOKS	10100609-434200	GENERAL MATERIALS	1.05

356	2031842680	36356	BAKER & TAYLOR BOOKS	10100609-434100	GENERAL MATERIALS	9.59
	2031842680	36356	BAKER & TAYLOR BOOKS	10100609-434200	GENERAL MATERIALS	0.40
	2031842678	36354	BAKER & TAYLOR BOOKS	10100609-434100	GENERAL MATERIALS	30.77
	2031842678	36354	BAKER & TAYLOR BOOKS	10100609-434200	GENERAL MATERIALS	3.00
	2031842677	36353	BAKER & TAYLOR BOOKS	10100609-434100	GENERAL MATERIALS	60.88
	2031842677	36353	BAKER & TAYLOR BOOKS	10100609-434200	GENERAL MATERIALS	2.75
	2031832091	36348	BAKER & TAYLOR BOOKS	10100609-434100	GENERAL MATERIALS	51.21
	2031832091	36348	BAKER & TAYLOR BOOKS	10100609-434200	GENERAL MATERIALS	1.45
	2031832084	36341	BAKER & TAYLOR BOOKS	10100609-434100	GENERAL MATERIALS	44.76
	2031832084	36341	BAKER & TAYLOR BOOKS	10100609-434200	GENERAL MATERIALS	3.15
	2031832083	36340	BAKER & TAYLOR BOOKS	10100609-434100	GENERAL MATERIALS	14.25
	2031832083	36340	BAKER & TAYLOR BOOKS	10100609-434200	GENERAL MATERIALS	0.40
	2031832078	36335	BAKER & TAYLOR BOOKS	10100609-434100	GENERAL MATERIALS	10.07
	2031832078	36335	BAKER & TAYLOR BOOKS	10100609-434200	GENERAL MATERIALS	1.05
	2031864844	36473	BAKER & TAYLOR BOOKS	10100609-434100	GENERAL MATERIALS	36.95
	2031781752	35012	BAKER & TAYLOR BOOKS	10100610-434100	GENERAL MATERIALS	16.21
	2031781752	35012	BAKER & TAYLOR BOOKS	10100610-434200	GENERAL MATERIALS	1.05
	2031781751	35013	BAKER & TAYLOR BOOKS	10100610-434100	GENERAL MATERIALS	44.80
	2031781751	35013	BAKER & TAYLOR BOOKS	10100610-434200	GENERAL MATERIALS	3.15

356	2031796873	35635	BAKER & TAYLOR BOOKS	10100610-434100	GENERAL MATERIALS	17.34
	2031796873	35635	BAKER & TAYLOR BOOKS	10100610-434200	GENERAL MATERIALS	2.10
	2031801251	35629	BAKER & TAYLOR BOOKS	10100610-434100	GENERAL MATERIALS	36.09
	2031801251	35629	BAKER & TAYLOR BOOKS	10100610-434200	GENERAL MATERIALS	0.40
	2031809728	35621	BAKER & TAYLOR BOOKS	10100609-434100	GENERAL MATERIALS	54.85
	2031809728	35621	BAKER & TAYLOR BOOKS	10100609-434200	GENERAL MATERIALS	4.20
	2031809727	35619	BAKER & TAYLOR BOOKS	10100609-434100	GENERAL MATERIALS	10.07
	2031809727	35619	BAKER & TAYLOR BOOKS	10100609-434200	GENERAL MATERIALS	1.05
	2031809726	35622	BAKER & TAYLOR BOOKS	10100609-434100	GENERAL MATERIALS	20.99
	2031809726	35622	BAKER & TAYLOR BOOKS	10100609-434200	GENERAL MATERIALS	0.25
	2031809723	35638	BAKER & TAYLOR BOOKS	10100609-434100	GENERAL MATERIALS	19.59
	2031809723	35638	BAKER & TAYLOR BOOKS	10100609-434200	GENERAL MATERIALS	0.25
	2031819120	35740	BAKER & TAYLOR BOOKS	10100609-434100	GENERAL MATERIALS	19.60
	2031819120	35740	BAKER & TAYLOR BOOKS	10100609-434200	GENERAL MATERIALS	0.40
	2031809732	35746	BAKER & TAYLOR BOOKS	10100609-434100	GENERAL MATERIALS	14.20
	2031809732	35746	BAKER & TAYLOR BOOKS	10100609-434200	GENERAL MATERIALS	0.40
	2031809731	35747	BAKER & TAYLOR BOOKS	10100609-434100	GENERAL MATERIALS	76.13
	2031809731	35747	BAKER & TAYLOR BOOKS	10100609-434200	GENERAL MATERIALS	5.25
	2031809730	35748	BAKER & TAYLOR BOOKS	10100609-434100	GENERAL MATERIALS	398.56

356	2031809730	35748	BAKER & TAYLOR BOOKS	10100609-434200	GENERAL MATERIALS	13.60
	2031842684	36359	BAKER & TAYLOR BOOKS	10100609-434100	GENERAL MATERIALS	53.35
	2031842684	36359	BAKER & TAYLOR BOOKS	10100609-434200	GENERAL MATERIALS	3.70
	2031832087	36344	BAKER & TAYLOR BOOKS	10100609-434100	GENERAL MATERIALS	4.19
	2031832087	36344	BAKER & TAYLOR BOOKS	10100609-434200	GENERAL MATERIALS	0.25
	2031832082	36339	BAKER & TAYLOR BOOKS	10100609-434100	GENERAL MATERIALS	16.38
	2031801249	35631	BAKER & TAYLOR BOOKS	10100610-434100	GENERAL MATERIALS	14.40
	2031801249	35631	BAKER & TAYLOR BOOKS	10100610-434200	GENERAL MATERIALS	0.25
	2031801256	35624	BAKER & TAYLOR BOOKS	10100610-434100	GENERAL MATERIALS	29.99
	2031801256	35624	BAKER & TAYLOR BOOKS	10100610-434200	GENERAL MATERIALS	0.40
	2031805693	35623	BAKER & TAYLOR BOOKS	10100610-434100	GENERAL MATERIALS	15.68
	2031805693	35623	BAKER & TAYLOR BOOKS	10100610-434200	GENERAL MATERIALS	1.05
	2031805697	35639	BAKER & TAYLOR BOOKS	10100609-434100	GENERAL MATERIALS	9.58
	2031805697	35639	BAKER & TAYLOR BOOKS	10100609-434200	GENERAL MATERIALS	0.65
	2031809725	35911	BAKER & TAYLOR BOOKS	10100609-434100	GENERAL MATERIALS	74.07
	2031809725	35911	BAKER & TAYLOR BOOKS	10100609-434200	GENERAL MATERIALS	3.25
	2031819131	35901	BAKER & TAYLOR BOOKS	10100609-434100	GENERAL MATERIALS	70.02
	2031819131	35901	BAKER & TAYLOR BOOKS	10100609-434200	GENERAL MATERIALS	3.55
	2031819126	35906	BAKER & TAYLOR BOOKS	10100609-434100	GENERAL MATERIALS	13.42

356	2031819126	35906	BAKER & TAYLOR BOOKS	10100609-434200	GENERAL MATERIALS	1.05
	2031819125	35907	BAKER & TAYLOR BOOKS	10100609-434100	GENERAL MATERIALS	30.79
	2031819125	35907	BAKER & TAYLOR BOOKS	10100609-434200	GENERAL MATERIALS	1.95
	2031819124	35908	BAKER & TAYLOR BOOKS	10100609-434100	GENERAL MATERIALS	23.80
	2031819124	35908	BAKER & TAYLOR BOOKS	10100609-434200	GENERAL MATERIALS	0.80
	2031842681	36357	BAKER & TAYLOR BOOKS	10100609-434100	GENERAL MATERIALS	9.51
	2031842681	36357	BAKER & TAYLOR BOOKS	10100609-434200	GENERAL MATERIALS	0.90
	2031842675	36351	BAKER & TAYLOR BOOKS	10100609-434100	GENERAL MATERIALS	15.56
	2031842675	36351	BAKER & TAYLOR BOOKS	10100609-434200	GENERAL MATERIALS	0.50
	2031832088	36345	BAKER & TAYLOR BOOKS	10100609-434100	GENERAL MATERIALS	21.58
	2031832088	36345	BAKER & TAYLOR BOOKS	10100609-434200	GENERAL MATERIALS	0.40
	2031868885	36470	BAKER & TAYLOR BOOKS	10100609-434100	GENERAL MATERIALS	807.12
	2031868885	36470	BAKER & TAYLOR BOOKS	10100609-434200	GENERAL MATERIALS	29.90
	2031864834	36483	BAKER & TAYLOR BOOKS	10100609-434100	GENERAL MATERIALS	13.44
	2031864834	36483	BAKER & TAYLOR BOOKS	10100609-434200	GENERAL MATERIALS	1.05
	2031832082	36339	BAKER & TAYLOR BOOKS	10100609-434200	GENERAL MATERIALS	1.45
	2031832081	36338	BAKER & TAYLOR BOOKS	10100609-434100	GENERAL MATERIALS	55.00
	2031832081	36338	BAKER & TAYLOR BOOKS	10100609-434200	GENERAL MATERIALS	1.60
	2031868887	36467	BAKER & TAYLOR BOOKS	10100609-434100	GENERAL MATERIALS	13.42

356	2031868887	36467	BAKER & TAYLOR BOOKS	10100609-434200	GENERAL MATERIALS	1.05
	2031864837	36480	BAKER & TAYLOR BOOKS	10100609-434100	GENERAL MATERIALS	15.68
	2031864837	36480	BAKER & TAYLOR BOOKS	10100609-434200	GENERAL MATERIALS	1.05
	2031854422	36493	BAKER & TAYLOR BOOKS	10100609-434100	GENERAL MATERIALS	43.67
	2031854422	36493	BAKER & TAYLOR BOOKS	10100609-434200	GENERAL MATERIALS	3.15
	2031854423	36491	BAKER & TAYLOR BOOKS	10100609-434100	GENERAL MATERIALS	10.07
	2031854423	36491	BAKER & TAYLOR BOOKS	10100609-434200	GENERAL MATERIALS	1.05
	2031864830	36487	BAKER & TAYLOR BOOKS	10100609-434100	GENERAL MATERIALS	8.99
	2031864830	36487	BAKER & TAYLOR BOOKS	10100609-434200	GENERAL MATERIALS	0.25
	2031854261	36512	BAKER & TAYLOR BOOKS	10100609-434100	GENERAL MATERIALS	163.59
	2031854261	36512	BAKER & TAYLOR BOOKS	10100609-434200	GENERAL MATERIALS	9.30
	2031854269	36502	BAKER & TAYLOR BOOKS	10100609-434100	GENERAL MATERIALS	15.68
	2031854269	36502	BAKER & TAYLOR BOOKS	10100609-434200	GENERAL MATERIALS	1.05
	2031854271	36500	BAKER & TAYLOR BOOKS	10100609-434100	GENERAL MATERIALS	9.39
	2031796870	35211	BAKER & TAYLOR BOOKS	10100610-434100	GENERAL MATERIALS	58.30
	2031796870	35211	BAKER & TAYLOR BOOKS	10100610-434200	GENERAL MATERIALS	3.55
	2031864835	36482	BAKER & TAYLOR BOOKS	10100609-434100	GENERAL MATERIALS	13.44
	2031864835	36482	BAKER & TAYLOR BOOKS	10100609-434200	GENERAL MATERIALS	1.05
	2031864838	36479	BAKER & TAYLOR BOOKS	10100609-434100	GENERAL MATERIALS	83.50

356	2031864838	36479	BAKER & TAYLOR BOOKS	10100609-434200	GENERAL MATERIALS	2.10
	2031864839	36478	BAKER & TAYLOR BOOKS	10100609-434100	GENERAL MATERIALS	300.63
	2031864839	36478	BAKER & TAYLOR BOOKS	10100609-434200	GENERAL MATERIALS	21.15
	2031864832	36485	BAKER & TAYLOR BOOKS	10100609-434100	GENERAL MATERIALS	26.31
	2031864832	36485	BAKER & TAYLOR BOOKS	10100609-434200	GENERAL MATERIALS	2.10
	2031864833	36484	BAKER & TAYLOR BOOKS	10100609-434100	GENERAL MATERIALS	44.00
	2031864833	36484	BAKER & TAYLOR BOOKS	10100609-434200	GENERAL MATERIALS	1.45
	2031854266	36505	BAKER & TAYLOR BOOKS	10100609-434100	GENERAL MATERIALS	89.59
	2031854266	36505	BAKER & TAYLOR BOOKS	10100609-434200	GENERAL MATERIALS	6.30
	2031854267	36504	BAKER & TAYLOR BOOKS	10100609-434100	GENERAL MATERIALS	20.14
	2031854267	36504	BAKER & TAYLOR BOOKS	10100609-434200	GENERAL MATERIALS	1.95
	2031854272	36499	BAKER & TAYLOR BOOKS	10100609-434100	GENERAL MATERIALS	286.84
	2031854272	36499	BAKER & TAYLOR BOOKS	10100609-434200	GENERAL MATERIALS	10.45
	2031777094	34193	BAKER & TAYLOR BOOKS	10100609-434100	GENERAL MATERIALS	26.03
	2031777094	34193	BAKER & TAYLOR BOOKS	10100609-434200	GENERAL MATERIALS	0.90
	2031796869	35212	BAKER & TAYLOR BOOKS	10100609-434200	GENERAL MATERIALS	2.50
	2031796869	35212	BAKER & TAYLOR BOOKS	10100610-434100	GENERAL MATERIALS	62.00
	2031791358	35218	BAKER & TAYLOR BOOKS	10100610-434100	GENERAL MATERIALS	24.69
	2031791358	35218	BAKER & TAYLOR BOOKS	10100610-434200	GENERAL MATERIALS	0.40

356	2031791356	35221	BAKER & TAYLOR BOOKS	10100610-434100	GENERAL MATERIALS	52.19
	2031791356	35221	BAKER & TAYLOR BOOKS	10100610-434200	GENERAL MATERIALS	1.70
	2031785608	35004	BAKER & TAYLOR BOOKS	10100610-434100	GENERAL MATERIALS	8.40
	2031785608	35004	BAKER & TAYLOR BOOKS	10100610-434200	GENERAL MATERIALS	1.05
	2031864844	36473	BAKER & TAYLOR BOOKS	10100609-434200	GENERAL MATERIALS	3.30
	2031864836	36481	BAKER & TAYLOR BOOKS	10100609-434100	GENERAL MATERIALS	15.68
	2031864836	36481	BAKER & TAYLOR BOOKS	10100609-434200	GENERAL MATERIALS	1.05
	2031854418	36497	BAKER & TAYLOR BOOKS	10100609-434100	GENERAL MATERIALS	15.11
	2031854418	36497	BAKER & TAYLOR BOOKS	10100609-434200	GENERAL MATERIALS	1.05
	2031854419	36496	BAKER & TAYLOR BOOKS	10100609-434100	GENERAL MATERIALS	17.10
	2031854419	36496	BAKER & TAYLOR BOOKS	10100609-434200	GENERAL MATERIALS	0.40
	2031854420	36495	BAKER & TAYLOR BOOKS	10100609-434100	GENERAL MATERIALS	10.05
	2031854420	36495	BAKER & TAYLOR BOOKS	10100609-434200	GENERAL MATERIALS	1.05
	2031854259	36514	BAKER & TAYLOR BOOKS	10100609-434100	GENERAL MATERIALS	8.99
	2031854259	36514	BAKER & TAYLOR BOOKS	10100609-434200	GENERAL MATERIALS	0.40
	2031854260	36513	BAKER & TAYLOR BOOKS	10100609-434100	GENERAL MATERIALS	22.90
	2031854260	36513	BAKER & TAYLOR BOOKS	10100609-434200	GENERAL MATERIALS	0.25
	2031854270	36501	BAKER & TAYLOR BOOKS	10100609-434100	GENERAL MATERIALS	132.89
	2031854270	36501	BAKER & TAYLOR BOOKS	10100609-434200	GENERAL MATERIALS	2.40

356	2031785615	35227	BAKER & TAYLOR BOOKS	10100610-434100	GENERAL MATERIALS	12.06
	2031785615	35227	BAKER & TAYLOR BOOKS	10100610-434200	GENERAL MATERIALS	0.80
	2031785614	35229	BAKER & TAYLOR BOOKS	10100610-434100	GENERAL MATERIALS	17.40
	2031785614	35229	BAKER & TAYLOR BOOKS	10100610-434200	GENERAL MATERIALS	0.40
	2031785613	35232	BAKER & TAYLOR BOOKS	10100610-434100	GENERAL MATERIALS	13.42
	2031785613	35232	BAKER & TAYLOR BOOKS	10100610-434200	GENERAL MATERIALS	1.05
	2031854425	36489	BAKER & TAYLOR BOOKS	10100609-434200	GENERAL MATERIALS	0.25
	2031864831	36486	BAKER & TAYLOR BOOKS	10100609-434100	GENERAL MATERIALS	15.68
	2031864831	36486	BAKER & TAYLOR BOOKS	10100609-434200	GENERAL MATERIALS	1.05
	2031854262	36511	BAKER & TAYLOR BOOKS	10100609-434100	GENERAL MATERIALS	195.36
	2031854262	36511	BAKER & TAYLOR BOOKS	10100609-434200	GENERAL MATERIALS	14.55
	2031791357	35220	BAKER & TAYLOR BOOKS	10100610-434100	GENERAL MATERIALS	17.10
	2031791357	35220	BAKER & TAYLOR BOOKS	10100610-434200	GENERAL MATERIALS	0.40
	2031781747	35022	BAKER & TAYLOR BOOKS	10100610-434100	GENERAL MATERIALS	140.41
	2031781747	35022	BAKER & TAYLOR BOOKS	10100610-434200	GENERAL MATERIALS	4.50
	2031785609	35003	BAKER & TAYLOR BOOKS	10100610-434100	GENERAL MATERIALS	18.56
	2031785609	35003	BAKER & TAYLOR BOOKS	10100610-434200	GENERAL MATERIALS	0.90
	2031785610	35236	BAKER & TAYLOR BOOKS	10100610-434100	GENERAL MATERIALS	548.62
	2031785610	35236	BAKER & TAYLOR BOOKS	10100610-434200	GENERAL MATERIALS	22.50

356	2031854268	36503	BAKER & TAYLOR BOOKS	10100609-434100	GENERAL MATERIALS	15.68
	2031854268	36503	BAKER & TAYLOR BOOKS	10100609-434200	GENERAL MATERIALS	1.05
	2031854417	36498	BAKER & TAYLOR BOOKS	10100609-434100	GENERAL MATERIALS	29.79
	2031854417	36498	BAKER & TAYLOR BOOKS	10100609-434200	GENERAL MATERIALS	1.45
	2031796872	35207	BAKER & TAYLOR BOOKS	10100610-434100	GENERAL MATERIALS	28.55
	2031796872	35207	BAKER & TAYLOR BOOKS	10100610-434200	GENERAL MATERIALS	1.95
	2031796867	35215	BAKER & TAYLOR BOOKS	10100610-434100	GENERAL MATERIALS	9.60
	2031796867	35215	BAKER & TAYLOR BOOKS	10100610-434200	GENERAL MATERIALS	0.40
	2031785616	35223	BAKER & TAYLOR BOOKS	10100610-434100	GENERAL MATERIALS	181.15
	2031785616	35223	BAKER & TAYLOR BOOKS	10100610-434200	GENERAL MATERIALS	7.25
	2031785611	35234	BAKER & TAYLOR BOOKS	10100610-434100	GENERAL MATERIALS	73.86
	2031785611	35234	BAKER & TAYLOR BOOKS	10100610-434200	GENERAL MATERIALS	5.25
	2031785607	35005	BAKER & TAYLOR BOOKS	10100610-434100	GENERAL MATERIALS	17.98
	2031868884	36471	BAKER & TAYLOR BOOKS	10100609-434100	GENERAL MATERIALS	54.81
	2031868884	36471	BAKER & TAYLOR BOOKS	10100609-434200	GENERAL MATERIALS	4.20
	2031854421	36494	BAKER & TAYLOR BOOKS	10100609-434100	GENERAL MATERIALS	13.97
	2031854421	36494	BAKER & TAYLOR BOOKS	10100609-434200	GENERAL MATERIALS	0.90
	2031854424	36490	BAKER & TAYLOR BOOKS	10100609-434100	GENERAL MATERIALS	14.00
	2031854424	36490	BAKER & TAYLOR BOOKS	10100609-434200	GENERAL MATERIALS	1.05

356	2031854263	36510	BAKER & TAYLOR BOOKS	10100609-434100	GENERAL MATERIALS	203.21
	2031854263	36510	BAKER & TAYLOR BOOKS	10100609-434200	GENERAL MATERIALS	14.70
	2031854265	36506	BAKER & TAYLOR BOOKS	10100609-434100	GENERAL MATERIALS	24.77
	2031854265	36506	BAKER & TAYLOR BOOKS	10100609-434200	GENERAL MATERIALS	0.65
	2031854257	36516	BAKER & TAYLOR BOOKS	10100609-434100	GENERAL MATERIALS	15.67
	2031854257	36516	BAKER & TAYLOR BOOKS	10100609-434200	GENERAL MATERIALS	1.05
	2031796871	35209	BAKER & TAYLOR BOOKS	10100610-434100	GENERAL MATERIALS	15.20
	2031796871	35209	BAKER & TAYLOR BOOKS	10100610-434200	GENERAL MATERIALS	0.40
	2031796868	35213	BAKER & TAYLOR BOOKS	10100610-434100	GENERAL MATERIALS	10.17
	2031796868	35213	BAKER & TAYLOR BOOKS	10100610-434200	GENERAL MATERIALS	0.25
	2031791359	35217	BAKER & TAYLOR BOOKS	10100610-434100	GENERAL MATERIALS	15.19
	2031791359	35217	BAKER & TAYLOR BOOKS	10100610-434200	GENERAL MATERIALS	0.40
	2031791355	35222	BAKER & TAYLOR BOOKS	10100610-434100	GENERAL MATERIALS	9.57
	2031791355	35222	BAKER & TAYLOR BOOKS	10100610-434200	GENERAL MATERIALS	0.40
	2031785612	35233	BAKER & TAYLOR BOOKS	10100610-434100	GENERAL MATERIALS	27.16
	2031785612	35233	BAKER & TAYLOR BOOKS	10100610-434200	GENERAL MATERIALS	1.15
					BAKER & TAYLOR BOOKS Total:	9,584.19
615	2016-03-9030	35589	BLACK HILLS PATROL	10100609-422500	SECURITY	4,626.89
	2016-03-9038	35588	BLACK HILLS PATROL	10100609-422500	SECURITY	2,365.89
					BLACK HILLS PATROL Total:	6,992.78

619	S1394-16-0495	35637	BLACK HILLS PIZZA	10100610-429400	TRAVEL/TRAINING	57.46
					BLACK HILLS PIZZA Total:	57.46
643	56514	35745	BLACK HILLS WINDOW CLEANING INC	10100609-422500	STRUCTURE	340.00
					BLACK HILLS WINDOW CLEANING INC Total:	340.00
988	802186	35025	CHRIS SUPPLY COMPANY	10100609-429500	SUPPLIES	12.72
					CHRIS SUPPLY COMPANY Total:	12.72
7955	04/18/16	36675	COHN, JILL	10100609-422500	PROGRAMMING	200.00
					COHN, JILL Total:	200.00
1234	IN298445	35852	DAKOTA BUSINESS CENTER	10100609-424400	MACHINES/EQUIPMENT	141.97
	IN298445	35852	DAKOTA BUSINESS CENTER	10100609-425300	MACHINES/EQUIPMENT	106.98
	IN298445	35852	DAKOTA BUSINESS CENTER	10100609-426100	MACHINES/EQUIPMENT	17.61
	IN298502	35848	DAKOTA BUSINESS CENTER	10100609-424400	MACHINES/EQUIPMENT	317.58
	IN298502	35848	DAKOTA BUSINESS CENTER	10100609-425300	MACHINES/EQUIPMENT	492.12
	IN298177	35892	DAKOTA BUSINESS CENTER	10100609-426100	PUBLISHING	120.00
	IN298370	35888	DAKOTA BUSINESS CENTER	10100609-425300	MACHINE/EQUIPMENT	38.00
	IN299102	35853	DAKOTA BUSINESS CENTER	10100609-424400	MACHINES/EQUIPMENT	176.64
	IN299102	35853	DAKOTA BUSINESS CENTER	10100609-425300	MACHINES/EQUIPMENT	39.01
					DAKOTA BUSINESS CENTER Total:	1,449.91
6121	3190	36458	DAKOTA WELD & MACHINE LLC	10100609-425200	STRUCTURE	691.13
					DAKOTA WELD & MACHINE LLC Total:	691.13

1471	867066	35017	E & J SPECIALTIES INC	10100609-426100	SUPPLIES	31.00
					E & J SPECIALTIES INC Total:	31.00
1789	04/08/16	35883	FRIENDS OF THE LIBRARY	99600971-453000	REFUNDS	3,289.50
					FRIENDS OF THE LIBRARY Total:	3,289.50
1872	04/12/16	36391	GEORGES VACUUM SALES & SERV	10100609-426400	MAINTENANCE/FACILITIES	100.00
					GEORGES VACUUM SALES & SERV Total:	100.00
2132	T58841	36363	HARVEYS LOCK SHOP	10100609-426100	MAINTENANCE/FACILITIES	11.20
	T58643	33275	HARVEYS LOCK SHOP	10100609-426100	SUPPLIES	16.80
					HARVEYS LOCK SHOP Total:	28.00
2168	243801-0	35881	HEARTLAND PAPER CO	10100610-426400	MAINTENANCE/FACILITIES	129.71
	243849-0	35849	HEARTLAND PAPER CO	10100610-426400	MAINTENANCE/FACILITIES	32.80
	246396-0	35750	HEARTLAND PAPER CO	10100610-426400	MAINTENANCE/FACILITIES	114.48
	251016-0	36664	HEARTLAND PAPER CO	10100609-426400	MAINTENANCE/FACILITIES	62.96
	248694-0	35891	HEARTLAND PAPER CO	10100610-426400	MAINTENANCE/FACILITIES	95.75
	248695-0	35856	HEARTLAND PAPER CO	10100609-426400	MAINTENANCE/FACILITIES	81.94
					HEARTLAND PAPER CO Total:	517.64
2242	2016-03	36518	HIGHMARK FCU PARKING	10100609-424600	MISC	672.00
					HIGHMARK FCU PARKING Total:	672.00
3179	040516-041016	35587	JAMES MCSHANE	10100609-427000	TRAVEL/TRAINING	645.34
					JAMES MCSHANE Total:	645.34

2498	5804	36517	JANTECH LLC	10100609-422500	MAINTENANCE/FACILITIES	220.00
					JANTECH LLC Total:	220.00
7945	35694	36462	JIM'S PRIVATE UTILITY LOCATING	10100609-422500	MAINTENANCE/FACILITIES	75.00
					JIM'S PRIVATE UTILITY LOCATING Total:	75.00
456	3/7-12/16	36561	KIMBERLY BECK	10100609-427000	TRAVEL/TRAINING	34.20
					KIMBERLY BECK Total:	34.20
6181	503264	35239	LIVING DESIGN	10100609-422500	DECOR	125.00
					LIVING DESIGN Total:	125.00
3208	74499	35020	MENARDS	10100609-426400	MAINTENANCE/FACILITIES	43.26
	76366	36392	MENARDS	10100609-426100	MAINTENANCE/FACILITIES	12.49
	76366	36392	MENARDS	10100609-426300	MAINTENANCE/FACILITIES	2.48
	76366	36392	MENARDS	10100609-426400	MAINTENANCE/FACILITIES	37.09
	76366	36392	MENARDS	10100609-426500	MAINTENANCE/FACILITIES	16.98
	76366	36392	MENARDS	10100609-429600	MAINTENANCE/FACILITIES	19.99
	74526	35019	MENARDS	10100609-426400	MAINTENANCE/FACILITIES	80.40
	75356	35021	MENARDS	10100609-426100	MAINTENANCE/FACILITIES	2.98
	75356	35021	MENARDS	10100609-426400	MAINTENANCE/FACILITIES	15.06
	75506	36393	MENARDS	10100609-425200	MAINTENANCE/FACILITIES	305.46
	75506	36393	MENARDS	10100609-426100	MAINTENANCE/FACILITIES	3.99
	75506	36393	MENARDS	10100609-426300	MAINTENANCE/FACILITIES	8.98

3208	75506	36393	MENARDS	10100609-426400	MAINTENANCE/FACILITIES	47.91
	75506	36393	MENARDS	10100609-426500	MAINTENANCE/FACILITIES	5.21
					MENARDS Total:	602.28
3234	7789238806	36394	MICK'S ELECTRIC INC	10100609-425200	STRUCTURE	3,487.76
					MICK'S ELECTRIC INC Total:	3,487.76
3242	126811101795 5	35882	MIDCONTINENT COMMUNICATIONS	10100610-428100	MACHINES/EQUIPMENT	1,000.00
	700900202795 5	35854	MIDCONTINENT COMMUNICATIONS	10100610-428100	MACHINES/EQUIPMENT	215.00
					MIDCONTINENT COMMUNICATIONS Total:	1,215.00
3258	93811087	34525	MIDWEST TAPE EXCHANGE	10100609-434100	GENERAL MATERIALS	214.92
	93811206	34520	MIDWEST TAPE EXCHANGE	10100609-434200	GENERAL MATERIALS	2.50
	93811206	34520	MIDWEST TAPE EXCHANGE	10100609-434600	GENERAL MATERIALS	14.99
	93820467	34527	MIDWEST TAPE EXCHANGE	10100609-434200	GENERAL MATERIALS	5.00
	93820467	34527	MIDWEST TAPE EXCHANGE	10100609-434600	GENERAL MATERIALS	32.98
	93838367	35674	MIDWEST TAPE EXCHANGE	10100609-434100	GENERAL MATERIALS	39.99
	93832642	35668	MIDWEST TAPE EXCHANGE	10100609-434500	GENERAL MATERIALS	1,203.20
	93882467	36555	MIDWEST TAPE EXCHANGE	10100609-434200	GENERAL MATERIALS	2.50
	93882467	36555	MIDWEST TAPE EXCHANGE	10100609-434600	GENERAL MATERIALS	15.74
	93898284	36670	MIDWEST TAPE EXCHANGE	10100609-434100	GENERAL MATERIALS	39.99
	93898286	36667	MIDWEST TAPE EXCHANGE	10100609-434100	GENERAL MATERIALS	119.97
	93738995	36535	MIDWEST TAPE EXCHANGE	10100609-434200	GENERAL MATERIALS	22.50

3258	93738995	36535	MIDWEST TAPE EXCHANGE	10100609-434600	GENERAL MATERIALS	184.41
	93780760	36532	MIDWEST TAPE EXCHANGE	10100609-434200	GENERAL MATERIALS	5.00
	93780760	36532	MIDWEST TAPE EXCHANGE	10100609-434600	GENERAL MATERIALS	44.98
	93842184	36528	MIDWEST TAPE EXCHANGE	10100609-434200	GENERAL MATERIALS	5.00
	93842184	36528	MIDWEST TAPE EXCHANGE	10100609-434600	GENERAL MATERIALS	27.73
	93850111	36525	MIDWEST TAPE EXCHANGE	10100609-434200	GENERAL MATERIALS	2.50
	93850111	36525	MIDWEST TAPE EXCHANGE	10100609-434600	GENERAL MATERIALS	22.49
	93858897	36524	MIDWEST TAPE EXCHANGE	10100609-434100	GENERAL MATERIALS	64.98
	93876599	36552	MIDWEST TAPE EXCHANGE	10100609-434100	GENERAL MATERIALS	39.99
	93876701	36556	MIDWEST TAPE EXCHANGE	10100609-434200	GENERAL MATERIALS	5.00
	93876701	36556	MIDWEST TAPE EXCHANGE	10100609-434600	GENERAL MATERIALS	44.98
	93811084	34522	MIDWEST TAPE EXCHANGE	10100609-434100	GENERAL MATERIALS	29.99
	93811088	34521	MIDWEST TAPE EXCHANGE	10100609-434100	GENERAL MATERIALS	44.99
	93811204	34528	MIDWEST TAPE EXCHANGE	10100609-434200	GENERAL MATERIALS	2.50
	93811204	34528	MIDWEST TAPE EXCHANGE	10100609-434600	GENERAL MATERIALS	14.99
	93635718	35712	MIDWEST TAPE EXCHANGE	10100609-434200	GENERAL MATERIALS	5.00
	93635718	35712	MIDWEST TAPE EXCHANGE	10100609-434600	GENERAL MATERIALS	37.48
	93710642	35675	MIDWEST TAPE EXCHANGE	10100609-434200	GENERAL MATERIALS	7.50
	93710642	35675	MIDWEST TAPE EXCHANGE	10100609-434600	GENERAL MATERIALS	45.72

3258	93876702	36553	MIDWEST TAPE EXCHANGE	10100609-434200	GENERAL MATERIALS	5.00
	93876702	36553	MIDWEST TAPE EXCHANGE	10100609-434600	GENERAL MATERIALS	29.98
	93882326	36558	MIDWEST TAPE EXCHANGE	10100609-434100	GENERAL MATERIALS	39.99
	93859018	36523	MIDWEST TAPE EXCHANGE	10100609-434200	GENERAL MATERIALS	5.00
	93859018	36523	MIDWEST TAPE EXCHANGE	10100609-434600	GENERAL MATERIALS	44.98
	93876699	36559	MIDWEST TAPE EXCHANGE	10100609-434200	GENERAL MATERIALS	2.50
	93876699	36559	MIDWEST TAPE EXCHANGE	10100609-434600	GENERAL MATERIALS	11.24
	93807633	34526	MIDWEST TAPE EXCHANGE	10100609-434200	GENERAL MATERIALS	10.00
	93807633	34526	MIDWEST TAPE EXCHANGE	10100609-434600	GENERAL MATERIALS	71.96
	93651320	35670	MIDWEST TAPE EXCHANGE	10100609-434200	GENERAL MATERIALS	7.50
	93651320	35670	MIDWEST TAPE EXCHANGE	10100609-434600	GENERAL MATERIALS	58.47
	93710640	35669	MIDWEST TAPE EXCHANGE	10100609-434200	GENERAL MATERIALS	2.50
	93710640	35669	MIDWEST TAPE EXCHANGE	10100609-434600	GENERAL MATERIALS	23.24
	93836563	36531	MIDWEST TAPE EXCHANGE	10100609-434200	GENERAL MATERIALS	98.40
	93898378	36671	MIDWEST TAPE EXCHANGE	10100609-434200	GENERAL MATERIALS	5.00
	93898378	36671	MIDWEST TAPE EXCHANGE	10100609-434600	GENERAL MATERIALS	44.98
	93725820	36536	MIDWEST TAPE EXCHANGE	10100609-434200	GENERAL MATERIALS	2.50
	93725820	36536	MIDWEST TAPE EXCHANGE	10100609-434600	GENERAL MATERIALS	17.24
	93838368	36530	MIDWEST TAPE EXCHANGE	10100609-434100	GENERAL MATERIALS	324.91

3258	93872005	36557	MIDWEST TAPE EXCHANGE	10100609-434200	GENERAL MATERIALS	2.50
	93872005	36557	MIDWEST TAPE EXCHANGE	10100609-434600	GENERAL MATERIALS	11.24
	93872006	36554	MIDWEST TAPE EXCHANGE	10100609-434200	GENERAL MATERIALS	2.50
	93872006	36554	MIDWEST TAPE EXCHANGE	10100609-434600	GENERAL MATERIALS	23.24
	93890499	36668	MIDWEST TAPE EXCHANGE	10100609-434200	GENERAL MATERIALS	5.00
	93890499	36668	MIDWEST TAPE EXCHANGE	10100609-434600	GENERAL MATERIALS	46.48
	93890500	36666	MIDWEST TAPE EXCHANGE	10100609-434200	GENERAL MATERIALS	2.50
	93890500	36666	MIDWEST TAPE EXCHANGE	10100609-434600	GENERAL MATERIALS	12.74
	93811086	34529	MIDWEST TAPE EXCHANGE	10100609-434100	GENERAL MATERIALS	39.99
	93811205	34524	MIDWEST TAPE EXCHANGE	10100609-434200	GENERAL MATERIALS	2.50
	93811205	34524	MIDWEST TAPE EXCHANGE	10100609-434600	GENERAL MATERIALS	11.24
	93720345	35671	MIDWEST TAPE EXCHANGE	10100609-434200	GENERAL MATERIALS	2.50
	93720345	35671	MIDWEST TAPE EXCHANGE	10100609-434600	GENERAL MATERIALS	22.49
	93882324	36551	MIDWEST TAPE EXCHANGE	10100609-434100	GENERAL MATERIALS	79.98
	93838369	36529	MIDWEST TAPE EXCHANGE	10100609-434100	GENERAL MATERIALS	24.99
	93850109	36526	MIDWEST TAPE EXCHANGE	10100609-434200	GENERAL MATERIALS	10.00
	93850109	36526	MIDWEST TAPE EXCHANGE	10100609-434600	GENERAL MATERIALS	97.46
	93820468	34523	MIDWEST TAPE EXCHANGE	10100609-434200	GENERAL MATERIALS	57.50
	93820468	34523	MIDWEST TAPE EXCHANGE	10100609-434600	GENERAL MATERIALS	260.04

3258	93807632	34519	MIDWEST TAPE EXCHANGE	10100609-434200	GENERAL MATERIALS	5.00
	93807632	34519	MIDWEST TAPE EXCHANGE	10100609-434600	GENERAL MATERIALS	44.98
	93701919	35889	MIDWEST TAPE EXCHANGE	10100609-434200	GENERAL MATERIALS	2.50
	93701919	35889	MIDWEST TAPE EXCHANGE	10100609-434600	GENERAL MATERIALS	9.74
	93701922	35676	MIDWEST TAPE EXCHANGE	10100609-434200	GENERAL MATERIALS	17.50
	93701922	35676	MIDWEST TAPE EXCHANGE	10100609-434600	GENERAL MATERIALS	74.99
	93701925	35672	MIDWEST TAPE EXCHANGE	10100609-434200	GENERAL MATERIALS	15.00
	93701925	35672	MIDWEST TAPE EXCHANGE	10100609-434600	GENERAL MATERIALS	56.94
	93898375	36665	MIDWEST TAPE EXCHANGE	10100609-434200	GENERAL MATERIALS	15.00
	93898375	36665	MIDWEST TAPE EXCHANGE	10100609-434600	GENERAL MATERIALS	86.19
	93770392	36534	MIDWEST TAPE EXCHANGE	10100609-434200	GENERAL MATERIALS	25.00
	93770392	36534	MIDWEST TAPE EXCHANGE	10100609-434600	GENERAL MATERIALS	156.65
	93770395	36533	MIDWEST TAPE EXCHANGE	10100609-434200	GENERAL MATERIALS	12.50
	93770395	36533	MIDWEST TAPE EXCHANGE	10100609-434600	GENERAL MATERIALS	112.45
	93842185	36527	MIDWEST TAPE EXCHANGE	10100609-434200	GENERAL MATERIALS	7.50
	93842185	36527	MIDWEST TAPE EXCHANGE	10100609-434600	GENERAL MATERIALS	33.72
	93859021	36522	MIDWEST TAPE EXCHANGE	10100609-434200	GENERAL MATERIALS	7.50
	93859021	36522	MIDWEST TAPE EXCHANGE	10100609-434600	GENERAL MATERIALS	63.72
	93807631	34530	MIDWEST TAPE EXCHANGE	10100609-434200	GENERAL MATERIALS	2.50

3258	93807631	34530	MIDWEST TAPE EXCHANGE	10100609-434600	GENERAL MATERIALS	22.49
	93689529	35711	MIDWEST TAPE EXCHANGE	10100609-434200	GENERAL MATERIALS	5.00
	93689529	35711	MIDWEST TAPE EXCHANGE	10100609-434600	GENERAL MATERIALS	36.73
	93898379	36669	MIDWEST TAPE EXCHANGE	10100609-434200	GENERAL MATERIALS	2.50
	93898379	36669	MIDWEST TAPE EXCHANGE	10100609-434600	GENERAL MATERIALS	22.49
	93859023	36560	MIDWEST TAPE EXCHANGE	10100609-434200	GENERAL MATERIALS	2.50
	93859023	36560	MIDWEST TAPE EXCHANGE	10100609-434600	GENERAL MATERIALS	22.49
	93890498	36673	MIDWEST TAPE EXCHANGE	10100609-434200	GENERAL MATERIALS	2.50
	93890498	36673	MIDWEST TAPE EXCHANGE	10100609-434600	GENERAL MATERIALS	23.24
	93890501	36672	MIDWEST TAPE EXCHANGE	10100609-434200	GENERAL MATERIALS	20.00
	93890501	36672	MIDWEST TAPE EXCHANGE	10100609-434600	GENERAL MATERIALS	159.67
					MIDWEST TAPE EXCHANGE Total:	4,938.78
3555	0000452844	35662	OCLC INC	10100609-425900	SUPPORT SERVICES	3,380.50
					OCLC INC Total:	3,380.50
3617	136800013450 3040616	35658	OVERDRIVE INC	10100609-434500	GENERAL MATERIALS	14.99
	136800013584 3040116	35666	OVERDRIVE INC	10100609-434500	GENERAL MATERIALS	97.98
	136800020214 0032216	35657	OVERDRIVE INC	10100610-434500	GENERAL MATERIALS	195.00
	136800020952 3032916	35656	OVERDRIVE INC	10100610-434500	GENERAL MATERIALS	93.49
	MX136836983 041516	36660	OVERDRIVE INC	10100609-429300	GENERAL MATERIALS	100.00
	136800030407 3041916	36663	OVERDRIVE INC	10100609-434500	GENERAL MATERIALS	65.00

3617	136800030419 7040516	36544	OVERDRIVE INC	10100610-434500	GENERAL MATERIALS	79.99
	136800030428 3040516	36542	OVERDRIVE INC	10100610-434500	GENERAL MATERIALS	321.98
	136810455644 3041916	36662	OVERDRIVE INC	10100609-434500	GENERAL MATERIALS	98.92
	136812455479 7032216	36545	OVERDRIVE INC	10100610-434500	GENERAL MATERIALS	284.85
	136813105074 7040416	36541	OVERDRIVE INC	10100610-434500	GENERAL MATERIALS	273.85
	136800020978 3032916	35665	OVERDRIVE INC	10100610-434500	GENERAL MATERIALS	68.67
	136800030391 0041916	36647	OVERDRIVE INC	10100609-434500	GENERAL MATERIALS	15.99
	136800030484 7040516	36538	OVERDRIVE INC	10100610-434500	GENERAL MATERIALS	70.99
	136800022903 0041216	36648	OVERDRIVE INC	10100609-434500	GENERAL MATERIALS	125.00
	136800030382 7040516	36546	OVERDRIVE INC	10100610-434500	GENERAL MATERIALS	313.91
	136812570851 0040416	36543	OVERDRIVE INC	10100609-434500	GENERAL MATERIALS	7.99
	136800010965 3040416	35659	OVERDRIVE INC	10100609-434500	GENERAL MATERIALS	30.00
	136800005758 3041616	36661	OVERDRIVE INC	10100609-434500	GENERAL MATERIALS	14.95
	136800022884 0041216	36654	OVERDRIVE INC	10100609-434500	GENERAL MATERIALS	190.00
	136810292325 0041916	36652	OVERDRIVE INC	10100609-434500	GENERAL MATERIALS	40.00
	136812231991 7032216	36547	OVERDRIVE INC	10100610-434500	GENERAL MATERIALS	54.95
	136800011387 7032316	35667	OVERDRIVE INC	10100610-434500	GENERAL MATERIALS	31.96
	136800020995 0032916	35655	OVERDRIVE INC	10100610-434500	GENERAL MATERIALS	164.46
	136800010712 7041316	36659	OVERDRIVE INC	10100609-434500	GENERAL MATERIALS	27.99

3617	136800021014 3032916	36550	OVERDRIVE INC	10100610-434500	GENERAL MATERIALS	135.00
	136800021532 3030116	36548	OVERDRIVE INC	10100610-434500	GENERAL MATERIALS	265.47
	136800022860 7041216	36655	OVERDRIVE INC	10100609-434500	GENERAL MATERIALS	138.93
	136800030414 3041916	36649	OVERDRIVE INC	10100609-434500	GENERAL MATERIALS	336.00
	136810172853 7032916	36549	OVERDRIVE INC	10100610-434500	GENERAL MATERIALS	3.99
	136814442120 3040416	36539	OVERDRIVE INC	10100610-434500	GENERAL MATERIALS	97.98
	136800013429 0040616	35661	OVERDRIVE INC	10100609-434500	GENERAL MATERIALS	19.99
	136800020226 7032216	35664	OVERDRIVE INC	10100610-434500	GENERAL MATERIALS	195.00
	136800020969 7032916	35663	OVERDRIVE INC	10100609-434500	GENERAL MATERIALS	15.99
	136800030429 0041916	36656	OVERDRIVE INC	10100609-434500	GENERAL MATERIALS	99.54
	136800030447 0041916	36653	OVERDRIVE INC	10100609-434500	GENERAL MATERIALS	138.97
	136813060859 7041916	36650	OVERDRIVE INC	10100609-434500	GENERAL MATERIALS	944.41
	136814450513 0040416	36537	OVERDRIVE INC	10100610-434500	GENERAL MATERIALS	141.95
				OVERDRIVE INC Total:	5,316.13	
3848	3600050186	36658	RAPID CITY AREA SCHOOL DIST 51-4	10100609-434100	GENERAL MATERIALS	592.37
					RAPID CITY AREA SCHOOL DIST 51-4 Total:	592.37
3863	89174 03/31/16	35636	RAPID CITY JOURNAL - ADVERTISING	10100609-429300	GENERAL MATERIALS	41.18
					RAPID CITY JOURNAL - ADVERTISING Total:	41.18
3864	4 2/27/16	35002	RAPID CITY LIBRARY FOUNDATION INC	10100609-422500	STRUCTURE	1,697.35
					RAPID CITY LIBRARY FOUNDATION INC Total:	1,697.35

4330	2412125	35018	SERVALL UNIFORM/LINEN CO	10100610-426400	MAINTENANCE/FACILITIES	92.12
	2406111	35850	SERVALL UNIFORM/LINEN CO	10100610-426400	MAINTENANCE/FACILITIES	69.24
	2418141	36519	SERVALL UNIFORM/LINEN CO	10100610-426400	MAINTENANCE/FACILITIES	69.24
					SERVALL UNIFORM/LINEN CO Total:	230.60
7957	04/11/16	36674	SOL YOGA COLLECTIVE	10100609-422500	PROGRAMMING	75.00
					SOL YOGA COLLECTIVE Total:	75.00
4514	2016 DRURY	35855	SOUTH DAKOTA LIBRARY ASSOCIATION	10100609-429200	MEMBERSHIPS	15.00
					SOUTH DAKOTA LIBRARY ASSOCIATION Total:	15.00
4536	5087	36360	SOUTH DAKOTA STATE ARCHIVES	10100609-434100	GENERAL MATERIALS	57.60
	5095	36361	SOUTH DAKOTA STATE ARCHIVES	10100609-434100	GENERAL MATERIALS	86.40
					SOUTH DAKOTA STATE ARCHIVES Total:	144.00
4461	907350102 04/14/16	35909	STEPHANIE SMITH	10100609-434100	GENERAL MATERIALS	127.31
					STEPHANIE SMITH Total:	127.31
4836	3002478717	35238	THYSSENKRUPP ELEVATOR CORP	10100609-425300	MACHINES/EQUIPMENT	680.13
					THYSSENKRUPP ELEVATOR CORP Total:	680.13
6415	00674901 03/06/16	35880	VAST BUSINESS	10100609-428100	MACHINES/EQUIPMENT	489.04
					VAST BUSINESS Total:	489.04
5129	212145	35237	WARNE CHEMICAL & EQUIP.	10100609-422500	GROUNDS	53.00
					WARNE CHEMICAL & EQUIP. Total:	53.00
5220	672726-0	35910	WESTERN STATIONERS	10100609-429600	FURNITURE/SHELVING	197.50

5220	672444-0	35751	WESTERN STATIONERS	10100609-426100	MACHINES/EQUIPMENT	373.02
	672287-0	35024	WESTERN STATIONERS	10100609-426100	SUPPLIES	206.40
	672640-0	35240	WESTERN STATIONERS	10100609-426100	SUPPLIES	51.89
					WESTERN STATIONERS Total:	828.81
7925	04/05-04/09/16	35749	WOOD, DANIELLE	10100609-427000	TRAVEL/TRAINING	598.34
					WOOD, DANIELLE Total:	598.34
7892	03/29/16	35887	ZEONA ROAD	10100609-422500	PROGRAMMING	300.00
					ZEONA ROAD Total:	300.00
Total					Grand Total:	60,528.45