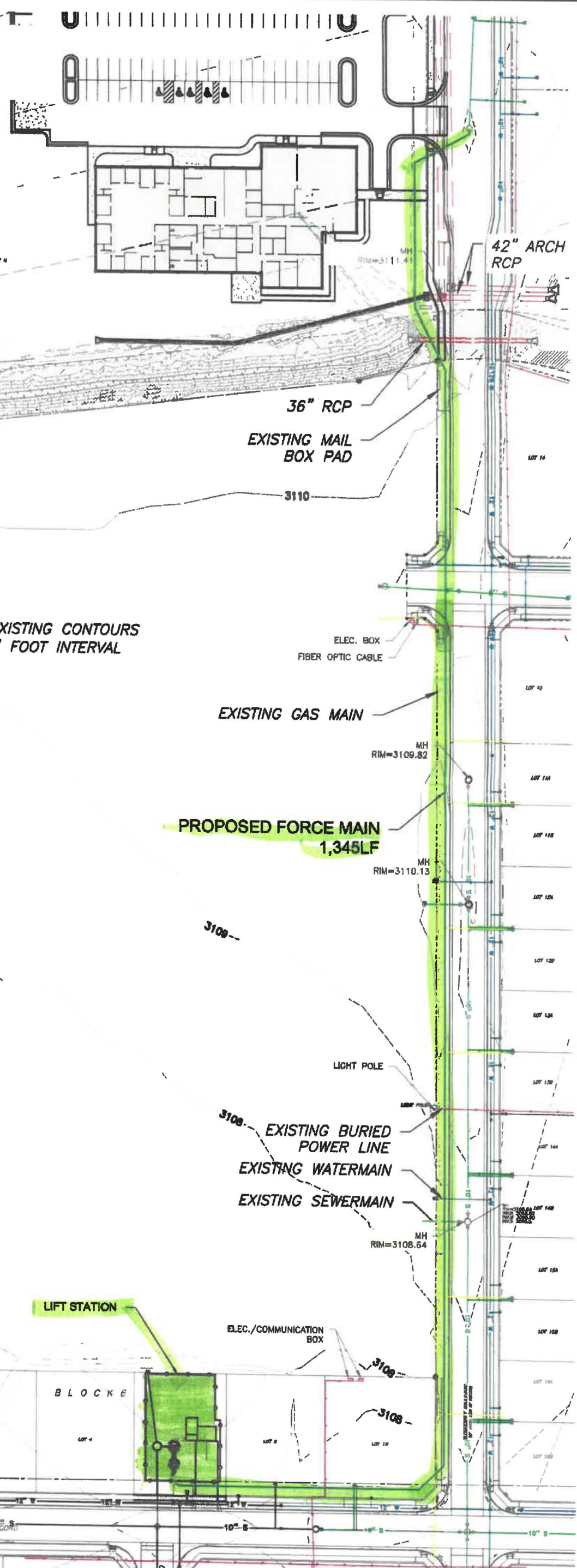


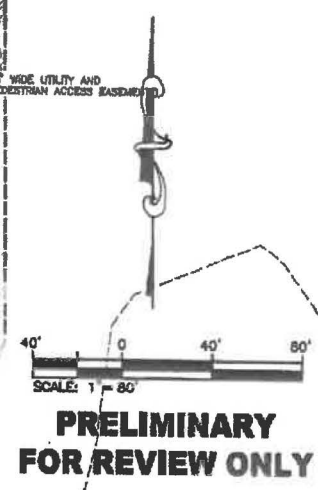
**PROPOSED FORCE MAIN ALIGNMENT**  
ORCHARD MEADOWS LIFT STATION  
RAPID CITY, SOUTH DAKOTA  
JANUARY 29, 2020

RECEIVED  
2020  
RAPID CITY DEPARTMENT OF  
COMMUNITY DEVELOPMENT



EXISTING CONTOURS  
1' FOOT INTERVAL

PROPOSED FORCE MAIN  
1,345LF



LIFT STATION

ELEC./COMMUNICATION BOX

BLOCK E

JIM STREET  
52' WIDTH ROW-OF-RECORD

X:\650-692\654 Wally Byrnes\Property\654 10 - Lift Station\dt Station\Force Main Layout 1.30.20.dwg 1/30/2020 8:31pm

ANOTHER QUALITY DEVELOPMENT BY:  
**DREAM DESIGN**  
INTERNATIONAL, INC.