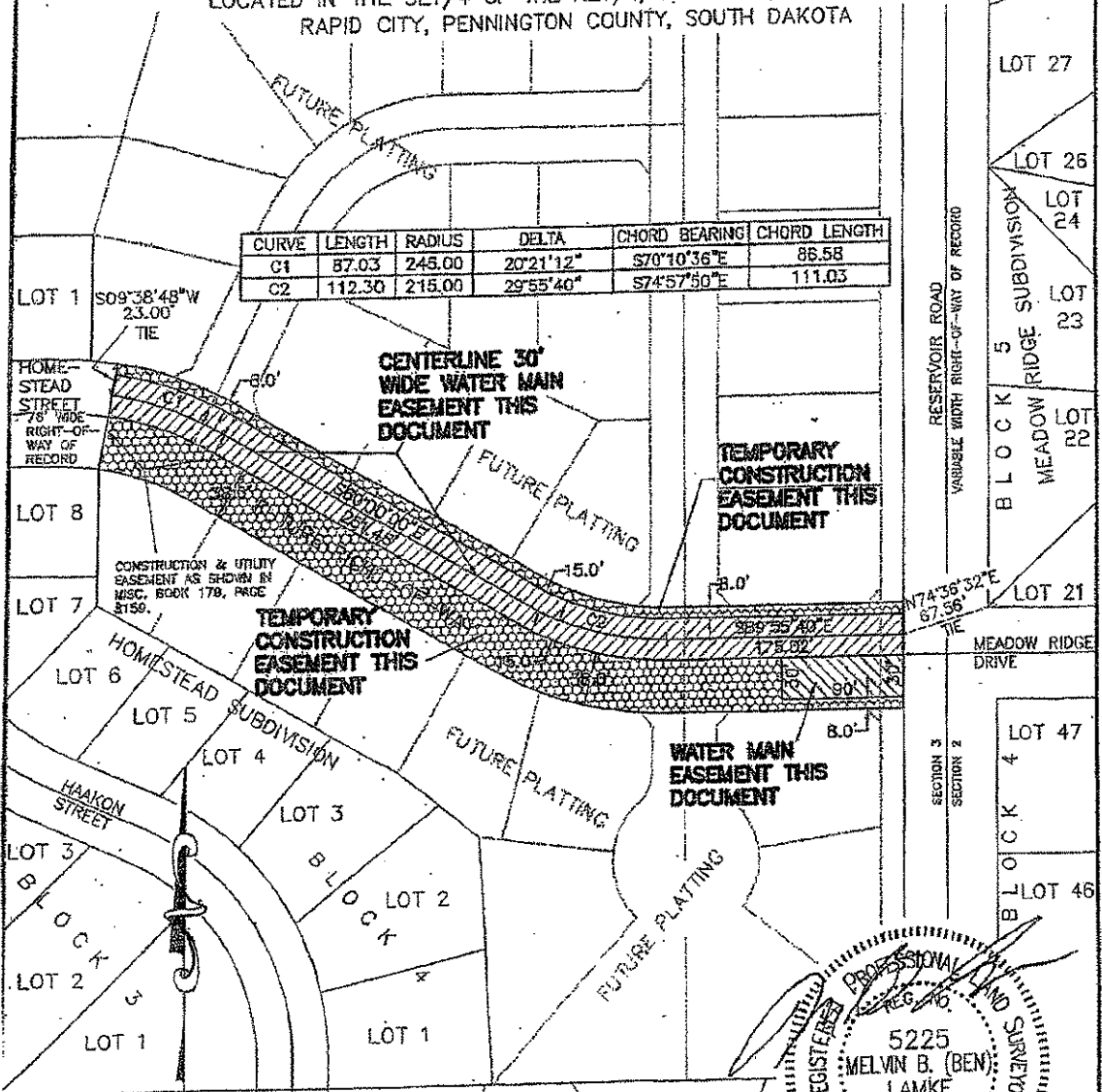


# WATER MAIN EASEMENT, AND TEMPORARY CONSTRUCTION EASEMENT

PORTION OF THE SE1/4 OF THE NE1/4, OF SECTION 3  
LOCATED IN THE SE1/4 OF THE NE1/4, SECTION 3, T1N, R8E, B.H.M.,  
RAPID CITY, PENNINGTON COUNTY, SOUTH DAKOTA

CURVE	LENGTH	RADIUS	DELTA	CHORD BEARING	CHORD LENGTH
C1	87.03	245.00	20°21'12"	S70°10'36"E	86.58
C2	112.30	215.00	29°55'40"	S74°57'50"E	111.03



**CENTERLINE 30'  
WIDE WATER MAIN  
EASEMENT THIS  
DOCUMENT**

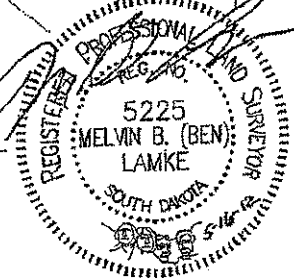
**TEMPORARY  
CONSTRUCTION  
EASEMENT THIS  
DOCUMENT**

**TEMPORARY  
CONSTRUCTION  
EASEMENT THIS  
DOCUMENT**

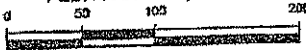
**WATER MAIN  
EASEMENT THIS  
DOCUMENT**

CONSTRUCTION & UTILITY  
EASEMENT AS SHOWN IN  
MISC. BOOK 178, PAGE  
215B.

THE SIDELINES OF THE EASEMENTS  
SHOWN HEREON ARE TO BE  
LENGTHENED OR SHORTENED TO  
CONFORM TO EXISTING EASEMENT  
LINES, RIGHT-OF-WAY LINES  
AND/OR PROPERTY LINES.



FEBRUARY 21, 2012



SCALE 1" = 100'

MBL

165B

PREPARED BY: SPERLICH CONSULTING, INC. \* 821 COLUMBUS STREET RAPID CITY SD 57701 \* (605) 721-4040

C:\Drawings\013263\Homestead East.dwg, 05/16/12 12:39:50 PM, 1:100

N:\DOCS\Nyberg\Public Works\Agreements\Agreement with Sodak Devel for water main easement.docx