

Case No. 19UR012

**Legal Description:**

Tract 8 (also in Section 4 and 10) of Rapid City Greenway Tract, located in Section 3, T1N, R7E, BHM, Rapid City, Pennington County, South Dakota

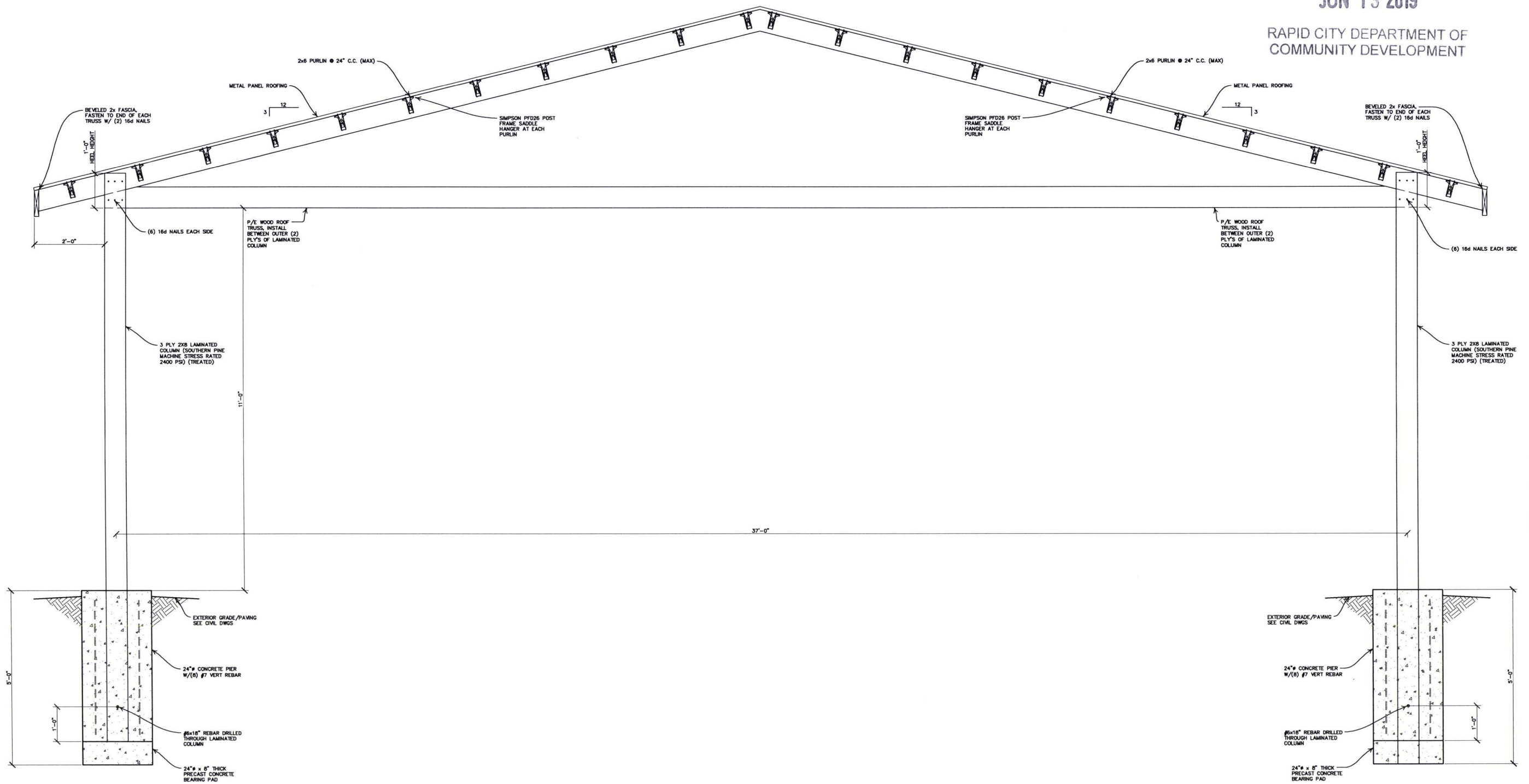




JUN 13 2019

RAPID CITY DEPARTMENT OF  
COMMUNITY DEVELOPMENT



RAPID CITY DEPARTMENT OF  
COMMUNITY DEVELOPMENT

1 SECTION  
S2.0 SCALE:  $\frac{3}{4}" = 1'-0"$

CANYON LAKE LITTLE LEAGUE ENCLOSURE  
RAPID CITY, SOUTH DAKOTA

## SECTIONS


DRAWN BY:  
BT

DATE: 05-24-2019



NO.	DATE:	NO.	DATE:

COMMA. NO.: CAD FILE: FILE

 3202 West Main Street  
Suite C  
Rapid City, South Dakota 57702  
605.343.9606

S3.0

RECEIVED

JUN 13 2019

RAPID CITY DEPARTMENT OF  
COMMUNITY DEVELOPMENT

DESIGN CODES:

- 2018 INTERNATIONAL BUILDING CODE.
- ACI 318-14 BUILDING CODE REQUIREMENTS FOR STRUCTURAL CONCRETE AND COMMENTARY.
- 2015 NATIONAL DESIGN SPECIFICATIONS (NDS) FOR WOOD CONSTRUCTION.

DESIGN LOADS:

THE STRUCTURAL SYSTEM FOR THIS BUILDING HAS BEEN DESIGNED WITH THE FOLLOWING SUPERIMPOSED LOADINGS:

ROOF:	SNOW LOAD	30 psf
	DEAD LOAD	10 psf
WIND:	BASIC WIND SPEED	115 mph
	EXPOSURE CATEGORY	C
	IMPORTANCE FACTOR	1.0

PRE-ENGINEERED WOOD TRUSSES:

1. ENGINEERED WOOD TRUSS SYSTEMS SHALL BE DESIGNED BY SUPPLIER TO THE CONFIGURATION AND LOAD-CARRYING CAPACITY SHOWN ON THE DRAWINGS AND SPECIFICATIONS. TRUSSES SHALL BE DESIGNED TO SUSTAIN SELF WEIGHT OF THE TRUSSES AND UNIFORM LOADS AS INDICATED ON THIS SHEET AND AS FOLLOWS:

- A) ROOF DEAD LOAD: TOP CHORD = 5 psf  
BOT. CHORD = 5 psf
- B) ROOF SNOW LOAD: UNIFORM = 30 psf  
DRIFT = SEE CODE  
OVERHANG = 60 psf
- C) WIND UPLIFT: SEE UPLIFT PLAN

2. ROOF TRUSSES SHALL BE DESIGNED FOR A MAXIMUM VERTICAL DEFLECTION OF L/360 LIVE LOAD AND L/240 TOTAL LOAD.

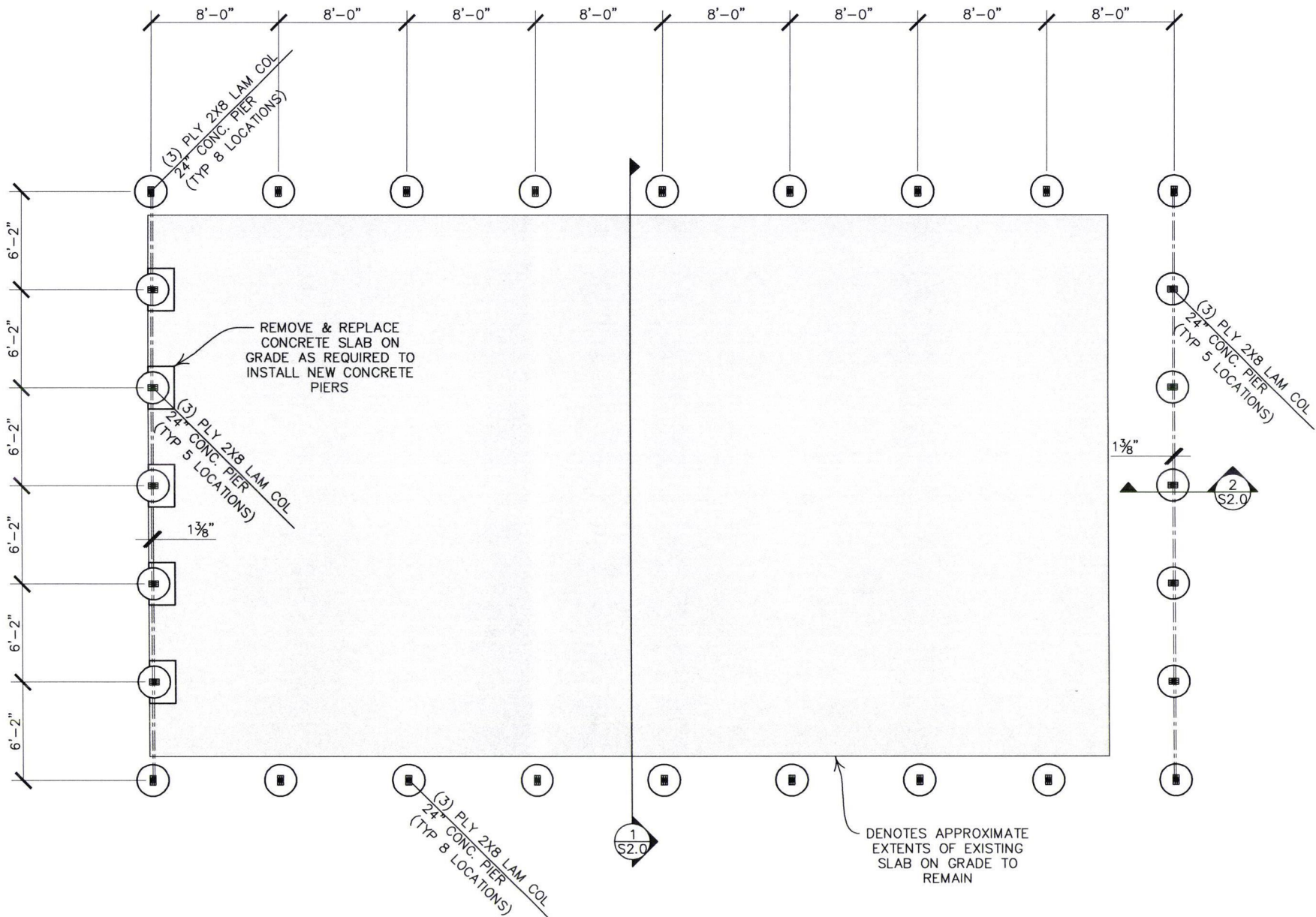
WOOD:

1. STRUCTURAL 2x WOOD COMPONENTS HAVE BEEN DESIGNED AS SPRUCE-PINE-FIR (SPF) NO 2 OR BETTER AND SHALL HAVE THE FOLLOWING MINIMUM ALLOWABLE FIBER STRESSES AND PROPERTIES:

MODULUS OF ELASTICITY (E)	1,300,000 PSI
BENDING (Fb)	875 PSI
SHEAR (Fv)	70 PSI

2. WOOD IN CONTACT WITH CONCRETE OR MASONRY SHALL BE PROTECTED OR PRESSURE TREATED IN ACCORDANCE WITH AITC-109.

3. MEMBER SIZES SHOWN ARE NOMINAL UNLESS NOTED OTHERWISE.



FOUNDATION PLAN  
SCALE: 1/4"=1'-0"



FOUNDATION PLAN NOTES:

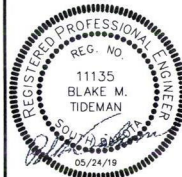
1. LAMINATED WOOD COLUMNS SHALL BE TREATED & CONSTRUCTED WITH SOUTHERN PINE MACHINE STRESS RATED LUMBER WITH MINIMUM 2,400 PSI BENDING STRESS

CANYON LAKE LITTLE LEAGUE ENCLOSURE  
RAPID CITY, SOUTH DAKOTA

SHEET TITLE  
FOUNDATION PLAN

DRAWN BY:  
BT

DATE:  
05-24-2019



NO.	DATE	NO.	DATE

REVISIONS:	NO.	DATE

CONC. FILE:	FILE

3202 West Main Street  
Suite C  
Rapid City, South Dakota 57702  
605.343.9606  
Albertson Engineering Inc.



S1.0