

Case No. 19UR013

**Legal Description:**

Lots 1 thru 4 of Block 26, located in Section 12, T1N, R7E, BHM, Rapid City, Pennington County, South Dakota

Board and Brush:

Board and Brush Creative Studio is a Do-it-Yourself design and & sign shop. The design of a Bb workshop is one that each customer will choose their desired sign, clock, pillow, tray, etc from on of over 500 semi-customizable designs to build to completion within our 3-hour workshop. During the 3-hour workshop, our sign specialists will teach all of our clients how to distress, stain, stencil, and finish their very own chosen project. A local beer and wine license will be applied for so our patrons may purchase a beverage while they are chatting with their friends or family. Other beverages will be offered as well such as water and soda.

Hours of operation are

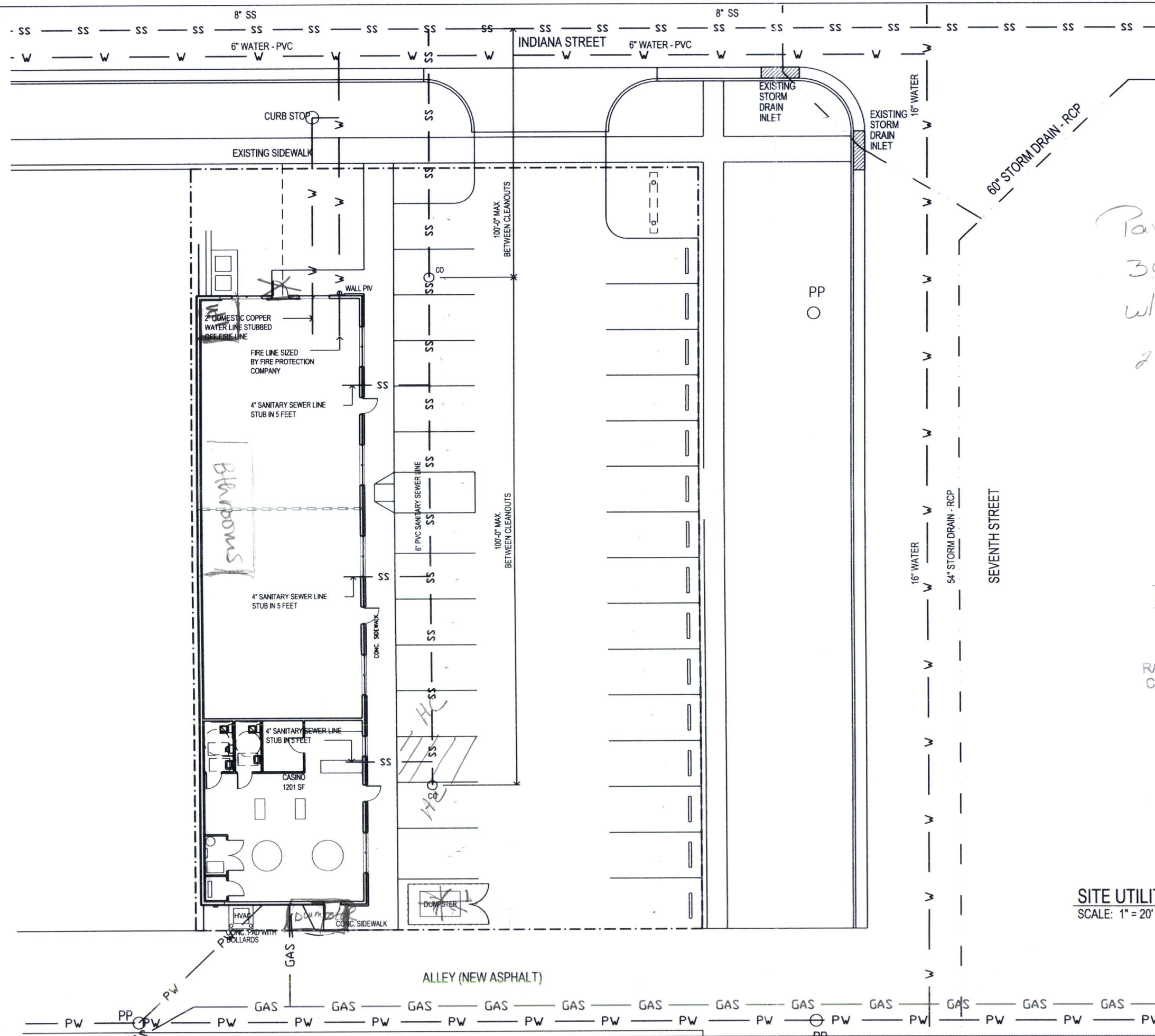
Friday: 5P-9P

Saturday: 5p-9p

With additional times available for private parties.

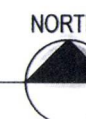
Board and Brush will employee approximately 5 people per workshop.

RECEIVED  
JUN 25 2019  
RAPID CITY DEPT. OF HOUSING  
COMMUNITY DEVELOPMENT



## SITE UTILITIES PLAN

SCALE: 1" = 20'



**KDGI**  
KENNEDY DESIGN GROUP, INC.  
4955 ENCHANTED PINES DRIVE  
RAPID CITY, SD 57701  
605.394.0189  
kentk.kdgi@rap.midco.net

**CLIENT:**  
REEL WYNING LLC  
4941 ENCHANTED PINES DRIVE  
RAPID CITY, SD 57701  
605.716.1800

**PROJECT:**  
NEW COMMERCIAL MALL  
703 & 705 INDIANA STREET  
RAPID CITY, SD 57701

## SITE UTILITIES PLAN

RECEIVED

JUN 25 2019

RAPID CITY DEPARTMENT OF  
COMMUNITY DEVELOPMENT

PROJECT NO:	527
FILE NO:	527-3
DRAWN BY:	RKK
CHECK BY:	RKK
DATE:	6.1.11
REVISION #1:	00.00.00
REVISION #2:	00.00.00

DATE: 6.1.11

C2

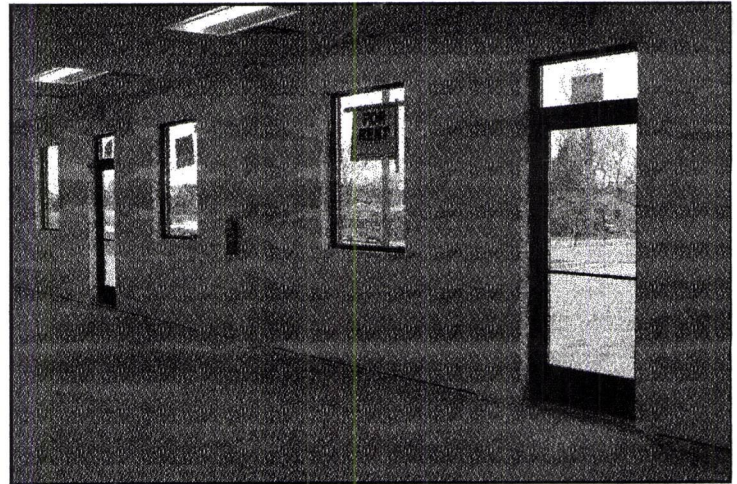
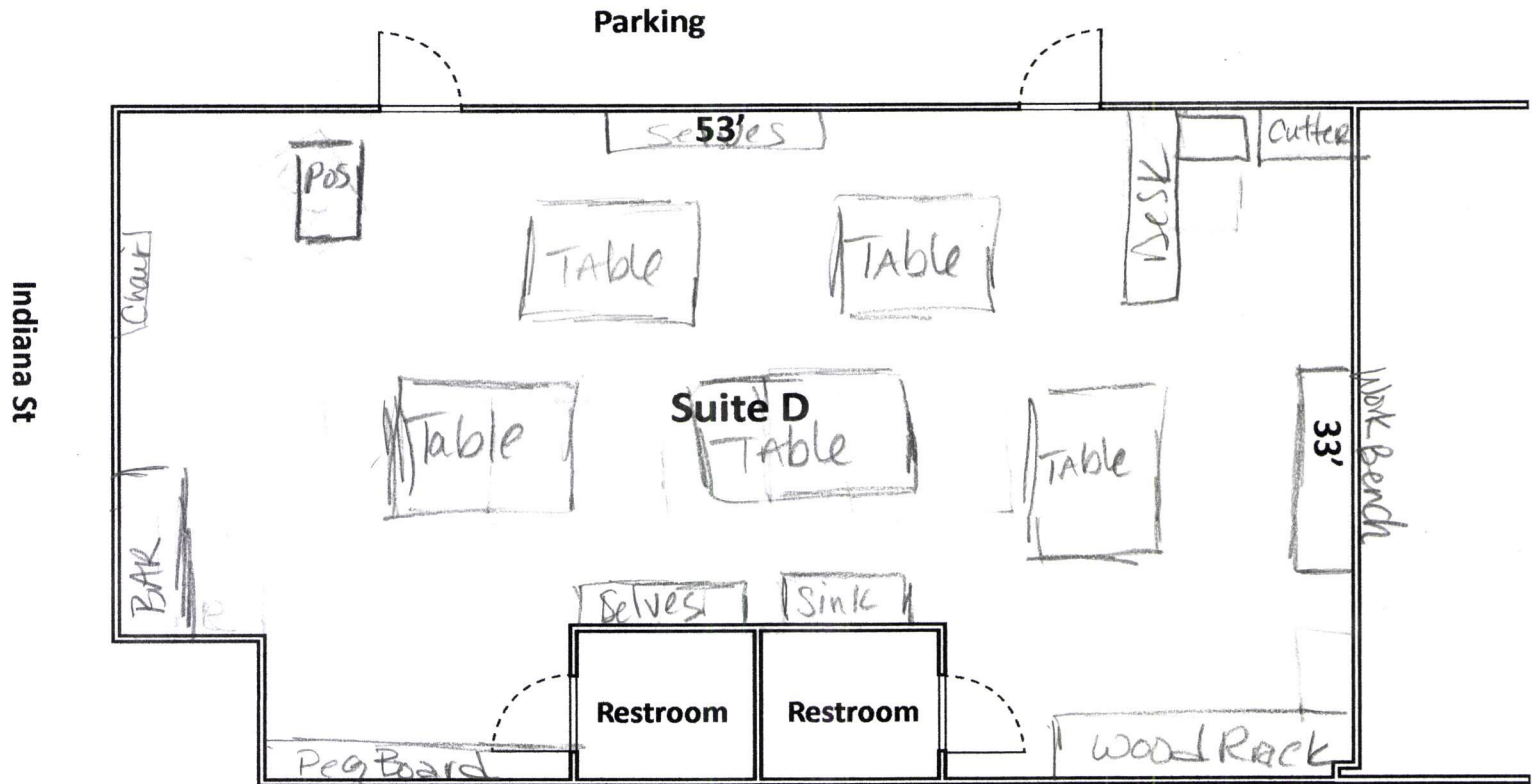
Drawing Number



JUN 25 2019

RAPID CITY DEPARTMENT OF  
COMMUNITY DEVELOPMENT


7th St





LANDSCAPING REQUIRED:	11,040 PTS
(15000 - 3960)	
LANDSCAPING PROVIDED:	11,220 PTS > 11,040 PTS (OK)
ROW POINTS (25% MAX=2760 PTS)	= 2,760
501 SY GRASS (10 PTS / SY)	5010
3 EXISTING LARGE TREES (2000 PTS EA)	6000
WITHIN 20 FT OF PARKING (50% MIN=5520 PTS)	= 6,020
77 SY GRASS (10 PTS / SY)	770
21 SHRUBS (250 PTS EA)	5500
BEYOND 20 FT OF PARKING	= 2,440
44 SY GRASS (10 PTS / SY)	440
1 EXISTING EVERGREEN TREE (2000 PTS EA)	2000

LANDSCAPING MATERIALS LEGEND



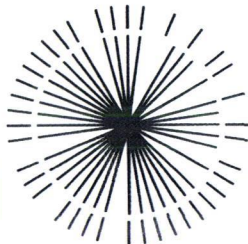
PROPOSED SHRUBS (250 PTS EACH)

DECIDUOUS CHOICES:

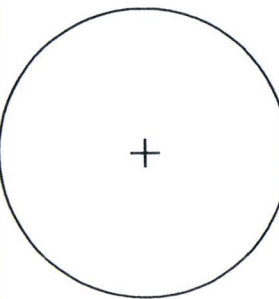
- BARBERRY (GOLDEN, ROSE GLOW)
- CURRANT (ALPINE)
- POTENTILLA (CORINATION TRIUMPH, GOLD DROP, GOLDFINGER)
- ROSES, HARDY SHRUB.
- SPIREA (GOLDMOUND)

EVERGREEN CHOICES:

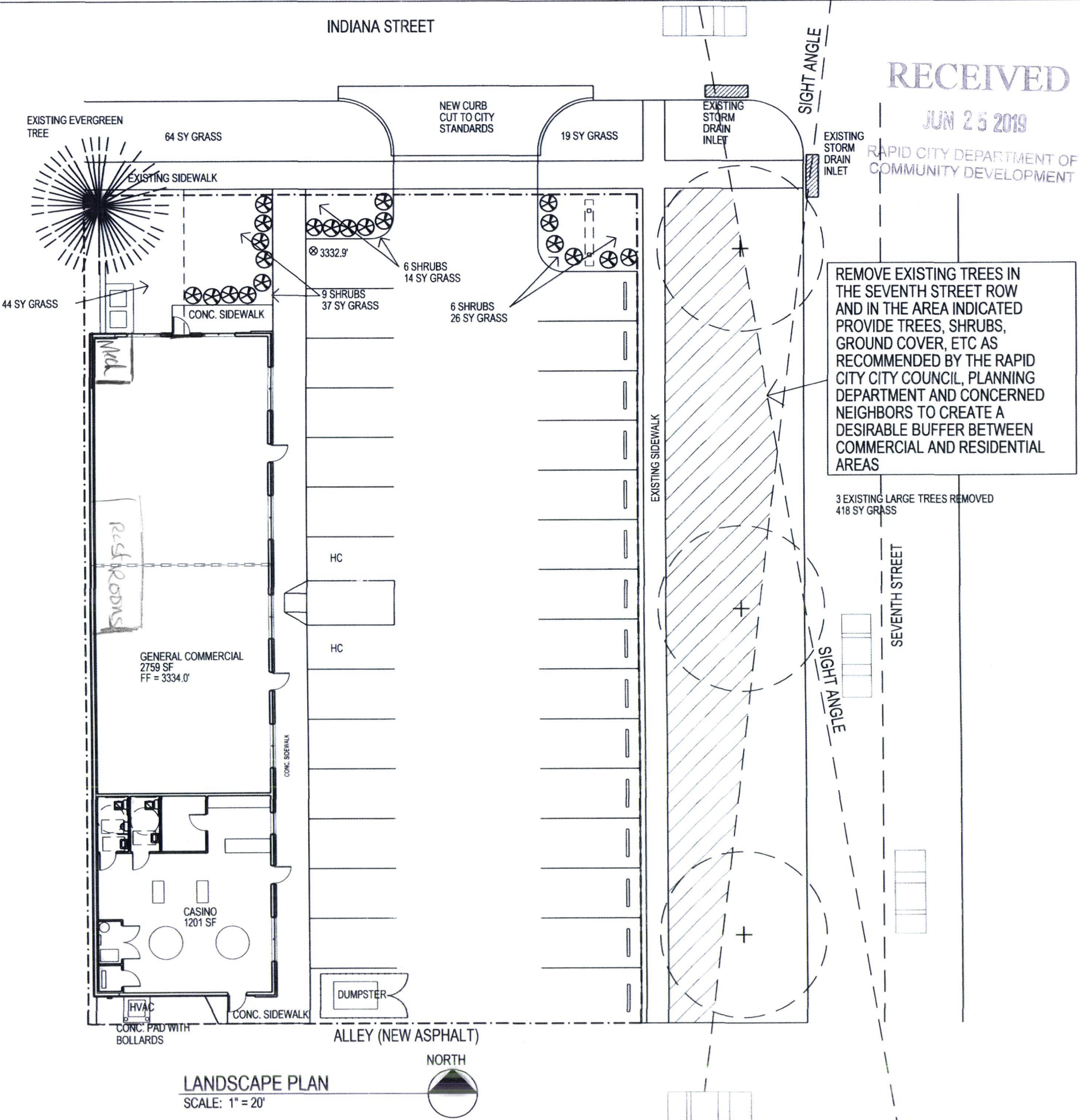
- ARBORVITAE, GLOBE (HETZ MIDGET)
- JUNIPER (MINT JULEP, COMPACT PFITZER, SEA GREEN, SAVIN)



EXISTING EVERGREEN TREE (2000 PTS EACH)



EXISTING LARGE DECIDUOUS TREE (2000 PTS EACH)



LANDSCAPE PLAN  
SCALE: 1" = 20'

RECEIVED

JUN 25 2019

RAPID CITY DEPARTMENT OF  
COMMUNITY DEVELOPMENT

REMOVE EXISTING TREES IN  
THE SEVENTH STREET ROW  
AND IN THE AREA INDICATED  
PROVIDE TREES, SHRUBS,  
GROUND COVER, ETC AS  
RECOMMENDED BY THE RAPID  
CITY CITY COUNCIL, PLANNING  
DEPARTMENT AND CONCERNED  
NEIGHBORS TO CREATE A  
DESIRABLE BUFFER BETWEEN  
COMMERCIAL AND RESIDENTIAL  
AREAS

3 EXISTING LARGE TREES REMOVED  
418 SY GRASS

**KDGI**  
KENNEDY DESIGN GROUP, INC.  
4955 ENCHANTED PINES DRIVE  
RAPID CITY, SD 57701  
605.394.0189  
kentk.kdgi@rap.midco.net

CLIENT:  
REEL WYNING LLC  
4941 ENCHANTED PINES DRIVE  
RAPID CITY, SD 57701  
605.716.1800

PROJECT:  
NEW COMMERCIAL MALL  
703 & 705 INDIANA STREET  
RAPID CITY, SD 57701

LANDSCAPE PLAN

PROJECT NO: 527  
FILE NO: 527-3  
DRAWN BY: RKK  
CHECK BY: RKK  
DATE: 6.1.11  
REVISION #1: 00.00.00  
REVISION #2: 00.00.00

DATE: 6.1.11

L1

Drawing Number