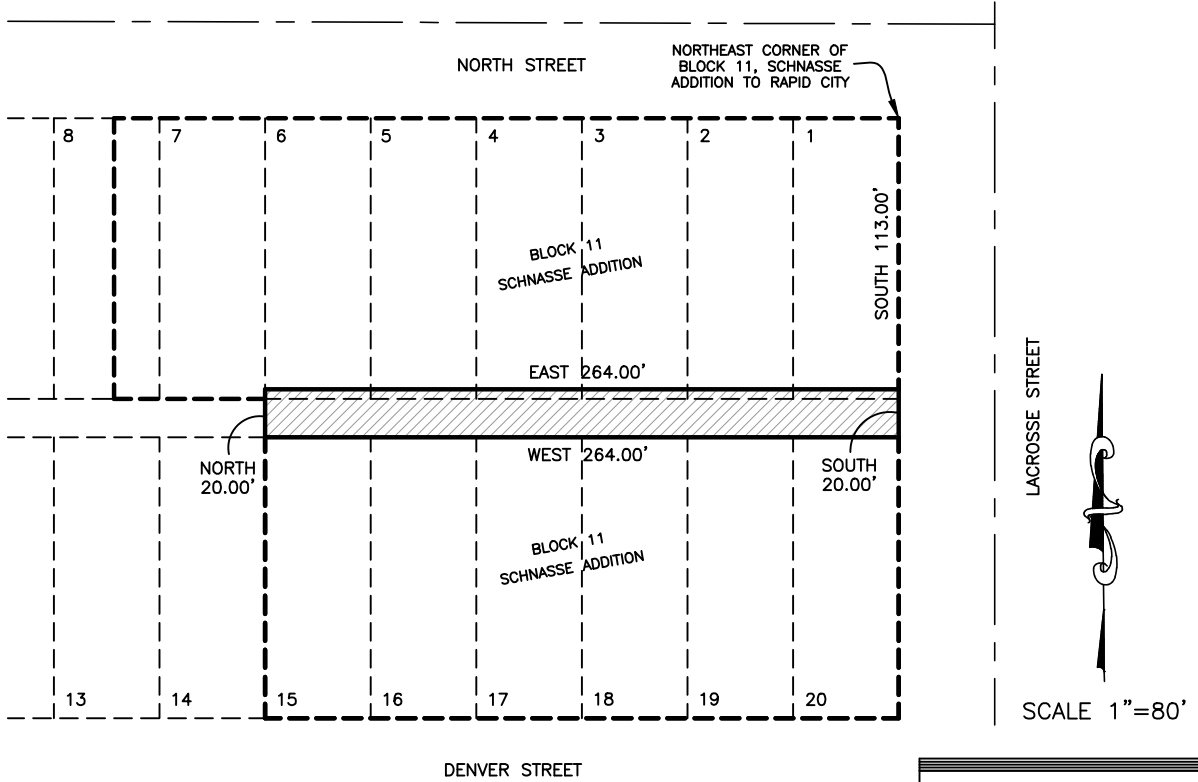


EXHIBIT

EXHIBIT MAP TO ACCOMPANY LEGAL DESCRIPTION
20' UTILITY EASEMENT
RAPID CITY, SOUTH DAKOTA

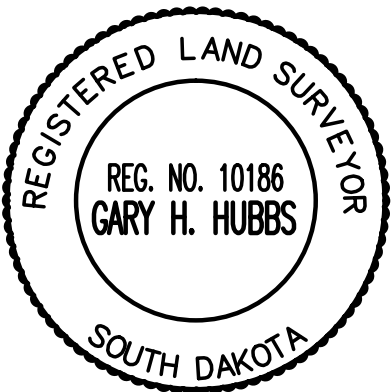


PART OF THE NORTHEAST QUARTER OF THE
SOUTHWEST QUARTER OF SECTION 31,
TOWNSHIP 2 NORTH, RANGE 8 EAST, BLACK
HILLS MERIDIAN, CITY OF RAPID CITY,
PENNINGTON COUNTY, SOUTH DAKOTA

THAT PORTION OF THE ALLEYWAY SOUTH OF
AND ADJACENT TO LOTS 1-6 AND NORTH
OF AND ADJACENT TO LOTS 15-20 AND
THE SOUTH 4 FEET OF LOTS 1-6 IN BLOCK
11 OF SCHNASSE ADDITION TO THE CITY OF
RAPID CITY, PENNINGTON COUNTY, SOUTH
DAKOTA, ALSO DESCRIBED AS:

BEGINNING AT A POINT, SAID POINT BEING
SOUTH 113.00 FEET FROM THE NORTHEAST
CORNER OF BLOCK 11, SCHNASSE ADDITION
TO RAPID CITY; THENCE SOUTH ALONG THE
WESTERLY RIGHT OF WAY LINE OF
LACROSSE STREET, 20.00 FEET; THENCE
WEST 264.00 FEET; THENCE NORTH 20.00
FEET; THENCE EAST 264.00 FEET TO THE
POINT OF BEGINNING.

CONTAINING 5,280 SQUARE FEET OR 0.121
ACRES



RA Reeve
& Associates, Inc.

920 CHAMBERS STREET, SUITE 14,
OGDEN, UTAH 84403
TEL: (801) 621-3100
FAX: (801) 621-2666
www.reeve-assoc.com

LAND PLANNERS • CIVIL ENGINEERS
LAND SURVEYORS • TRAFFIC ENGINEERS
STRUCTURAL ENGINEERS • LANDSCAPE ARCHITECTS

ADVENTURE'S FIRST STOP
MAVERIK

Maverik, inc.
North St. &
Lacrosse St.
Rapid City, SD

ISSUE:	02-18-16
PROJECT NO:	5799-380
CAD DWG FILE:	
DRAWN BY:	NKA
CHECKED BY:	CC