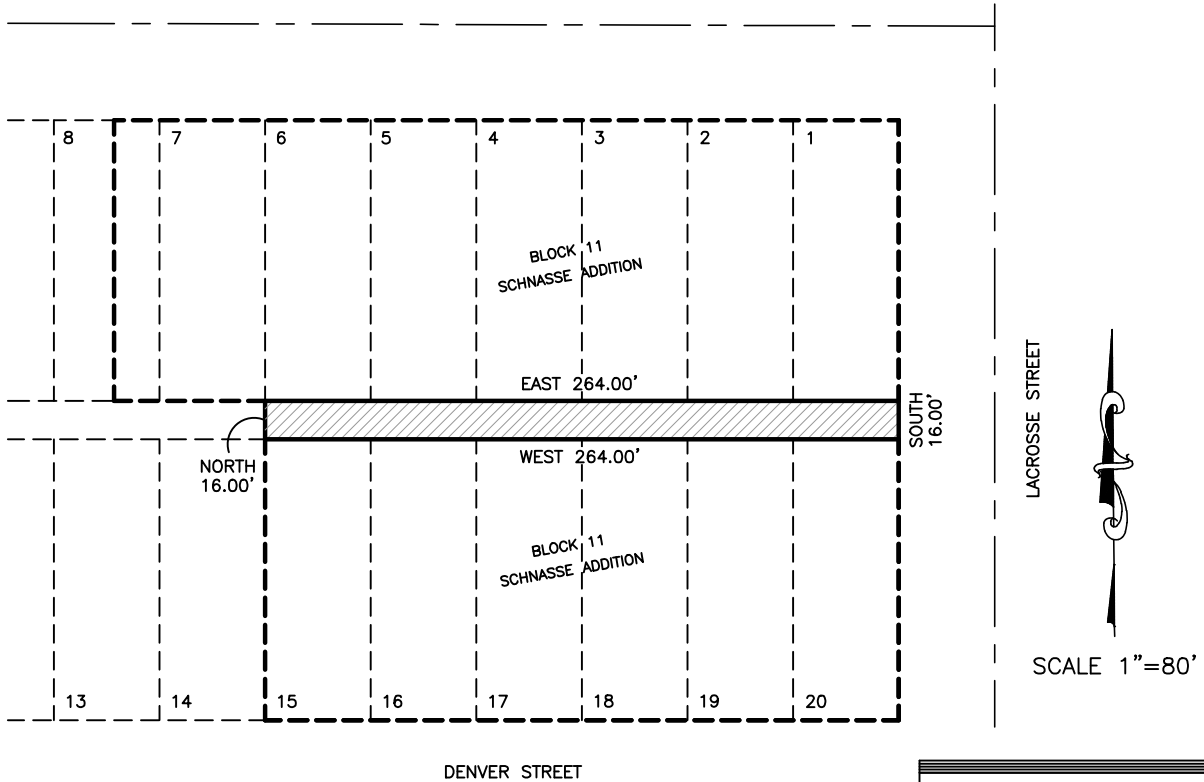


# EXHIBIT

EXHIBIT MAP TO ACCOMPANY LEGAL DESCRIPTION  
ALLEY WAY VACATION AREA  
RAPID CITY, SOUTH DAKOTA



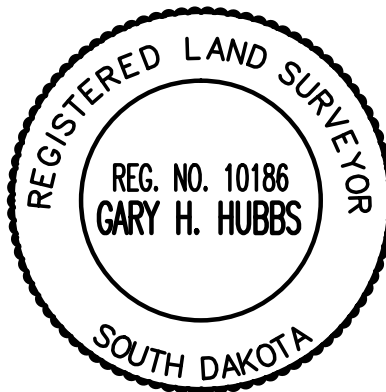
SCALE 1"=80'

PART OF THE NORTHEAST QUARTER OF THE  
SOUTHWEST QUARTER OF SECTION 31,  
TOWNSHIP 2 NORTH, RANGE 8 EAST, BLACK  
HILLS MERIDIAN, CITY OF RAPID CITY,  
PENNINGTON COUNTY, SOUTH DAKOTA

THAT PORTION OF THE ALLEYWAY SOUTH OF  
AND ADJACENT TO LOTS 1-6 AND NORTH  
OF AND ADJACENT TO LOTS 15-20 IN  
BLOCK 11 OF SCHNASSE ADDITION TO THE  
CITY OF RAPID CITY, PENNINGTON COUNTY,  
SOUTH DAKOTA, ALSO DESCRIBED AS:

BEGINNING AT THE SOUTHEAST CORNER OF  
LOT 1 OF BLOCK 11, SCHNASSE ADDITION  
TO RAPID CITY; THENCE SOUTH 16.00 FEET  
TO THE NORTHEAST CORNER OF LOT 20 OF  
BLOCK 11, SCHNASSE ADDITION TO RAPID  
CITY; THENCE WEST 264.00 FEET; THENCE  
NORTH 16.00 FEET; THENCE EAST 264.00  
FEET TO THE POINT OF BEGINNING.

CONTAINING 4,224 SQUARE FEET OR 0.097  
ACRES



920 CHAMBERS STREET, SUITE 14,  
OGDEN, UTAH 84403  
TEL: (801) 621-3100  
FAX: (801) 621-2666  
www.reeve-assoc.com

LAND PLANNERS • CIVIL ENGINEERS  
LAND SURVEYORS • TRAFFIC ENGINEERS  
STRUCTURAL ENGINEERS • LANDSCAPE ARCHITECTS



Maverik, inc.  
North St. &  
Lacrosse St.  
Rapid City, SD

ISSUE:	04-14-16
PROJECT NO:	5799-380
CAD DWG FILE:	
DRAWN BY:	NKA
CHECKED BY:	CC