

Case No. 19UR007

**Legal Description:**

Lot 1 of Lot K2-C of Marshall Height Tract, located in Section 30, T2N, R8E, BHM,  
Rapid City, Pennington County, South Dakota

Mexico Tipico

Hours of Operation: Monday to Thursday 11:00 a.m. to 10:00 p.m.

Friday and Saturday: 11:00 a.m. - 10:30 p.m.

Sunday: 11:00 a.m. - 9:00 p.m.

12 employees. To serve beer and wine to customers during meals.

*Ernesto Garcia Gallegos*

**RECEIVED**

**APR 15 2019**

RAPID CITY DEPARTMENT OF  
COMMUNITY DEVELOPMENT

MAR 29 2019



LANDSCAPE REQUIREMENTS

Lot Area	57,673 sf
Building Area	3,932 sf
Required Points:	53,681
Existing Landscaping:	
Grass - 3,278 sq	32,780
Trees - Large - 10 @ 2,000/ea	20,000
Trees - Medium - 6 @ 1,000/ea	6,000
Trees - Small - 10 @ 500/ea	5,000
Shrubs - 11 @ 250/ea	2,750
Total Existing Points:	67,030

- A. Enlarge existing approaches to 24' opening with 5' radius on curb returns. Surface with 6" reinforced concrete over 8" aggregate base course (within right-of-way).
- B. Construct new approach with 24' opening and 5' radius on curb returns. Surface with 6" reinforced concrete over 8" aggregate base course (within right-of-way).

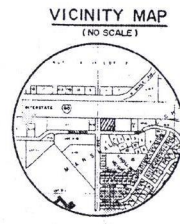
**EROSION CONTROL FOR PARKING LOT EXPANSION**

TEMPORARY:

1. Construction access point from Knollwood Drive, construct a 24' x 40' stabilized construction entrance of 1" aggregate, 5" thick, to control tracking (36 tons).
2. Install 300' of silt fence and 8 key holes as shown.
3. Remove temporary control features when no longer required.

PERMANENT:

1. Fertilize, mulch and seed all unpaved disturbed areas.
2. Maintain water application until vegetation is firmly established.

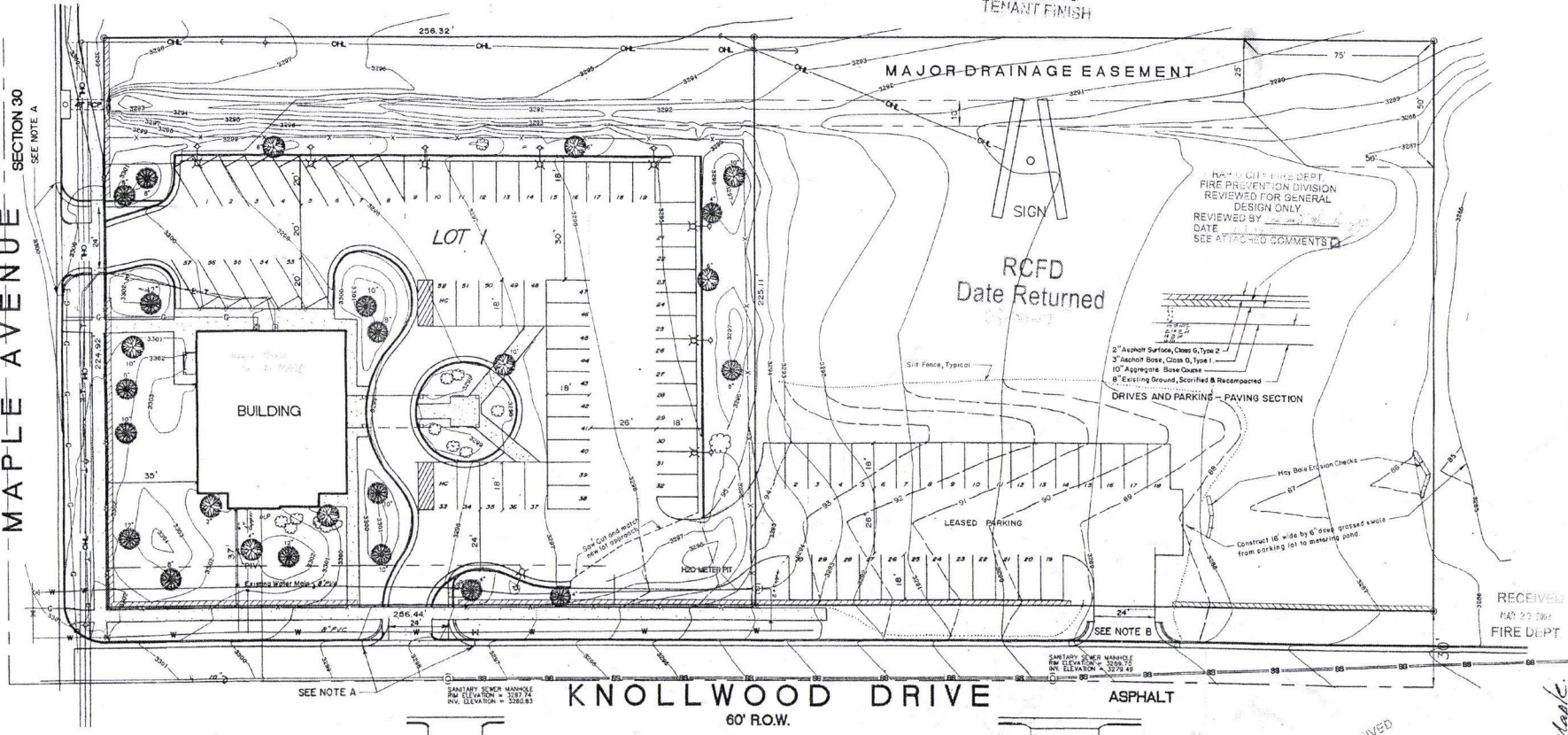


MATERIALS AND METHODS OF CONSTRUCTION SHALL BE IN ACCORDANCE WITH THE RAPID CITY STANDARD SPECIFICATIONS.

INTERSTATE 90 R.O.W.

SEPARATE PERMIT REQUIRED FOR INTERIOR & TENANT FINISH

SECTION 25  
SECTION 30  
MAPLE AVENUE  
SEE NOTE A



REVISIONS:

SUBMITTED BY: RW

DRAWN BY: RW

DATE: 12/20/01

CHECKED BY: WF

FISK LAND SURVEYING AND CONSULTING ENGINEERS, INC.

BOUNDARY SURVEY AND TOPOGRAPHIC MAP - LAYOUT

IS 1 AND 2 OF LOT K2-C OF MARSHALL HEIGHTS TRACT

1/4 OF SECTION 30, T2N, R8E, BHM, RAPID CITY,

MININGTON COUNTY, SOUTH DAKOTA

RECEIVED  
MAR 23 2007  
FIRE DEPT

RECEIVED  
MAR 21 2007  
ENGINEER  
FISK  
SOUTH DAKOTA

900 So Maple

MODIFIED JUNE 20, 2002, FOR PARKING LOT EXPANSION GRADING - PAVING - EROSION CONTROL

RECEIVED

FEB 29 2019

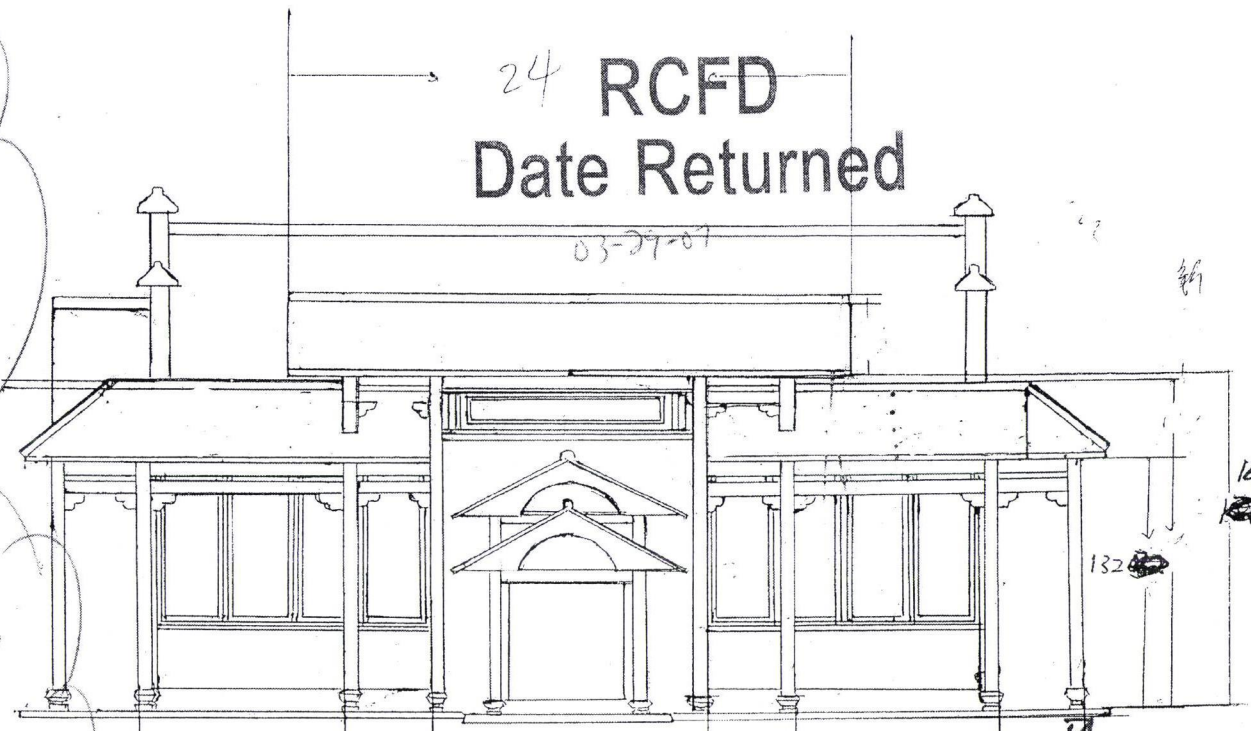
RAPID CITY DEPARTMENT OF  
COMMUNITY DEVELOPMENT

IF THE  
ACCIDENT IS  
ATTRIBUTED,  
COMBUSTING CONT. OR  
ENCLOSURE THE AREA  
MUST BE PROTECTED  
BY THE FIRE  
SPRINKLER SYSTEM

IF THE OCCUPANT  
WISHES TO SOLVE ACCORD,  
THE ENTIRE STRUCTURE  
MUST BE PROTECTED BY  
THE FIRE SPRINKLER SYSTEM

24 RCFD  
Date Returned

03-29-07



240 36 216

RAPID CITY FIRE DEPT.  
FIRE PREVENTION DIVISION  
REVIEWED FOR GENERAL  
DESIGN ONLY  
REVIEWED BY *G. Daniel Fahrenburger*  
DATE 03-29-07  
SEE ATTACHED COMMENTS

MAR 29 2019

RAPID CITY DEPARTMENT OF COMMUNITY DEVELOPMENT



FRANK D. MILETO A.I.A.  
14 BEAVER BROOK DRIVE, LONG VALLEY, N.J. 07035  
THE MILETO GROUP  
ARCHITECT-PROFESSIONAL PLANNER



LAM 5 ASSOCIATES CONSULTING, INC.  
6000 SERVICE CENTER BLVD  
SUITE 200, RENO, NV 89502  
TEL: 775-784-3333 FAX: 775-784-3334  
WWW.LAM5.COM EMAIL: INFO@LAM5.COM

HONGKONG BUFFET  
ALTERATION & ADDITION TO EXISTING RESTAURANT  
NORTHGATE PLAZA SHOPPING CENTER  
9775/581 NORTH STREET  
RAPID CITY, S.D.

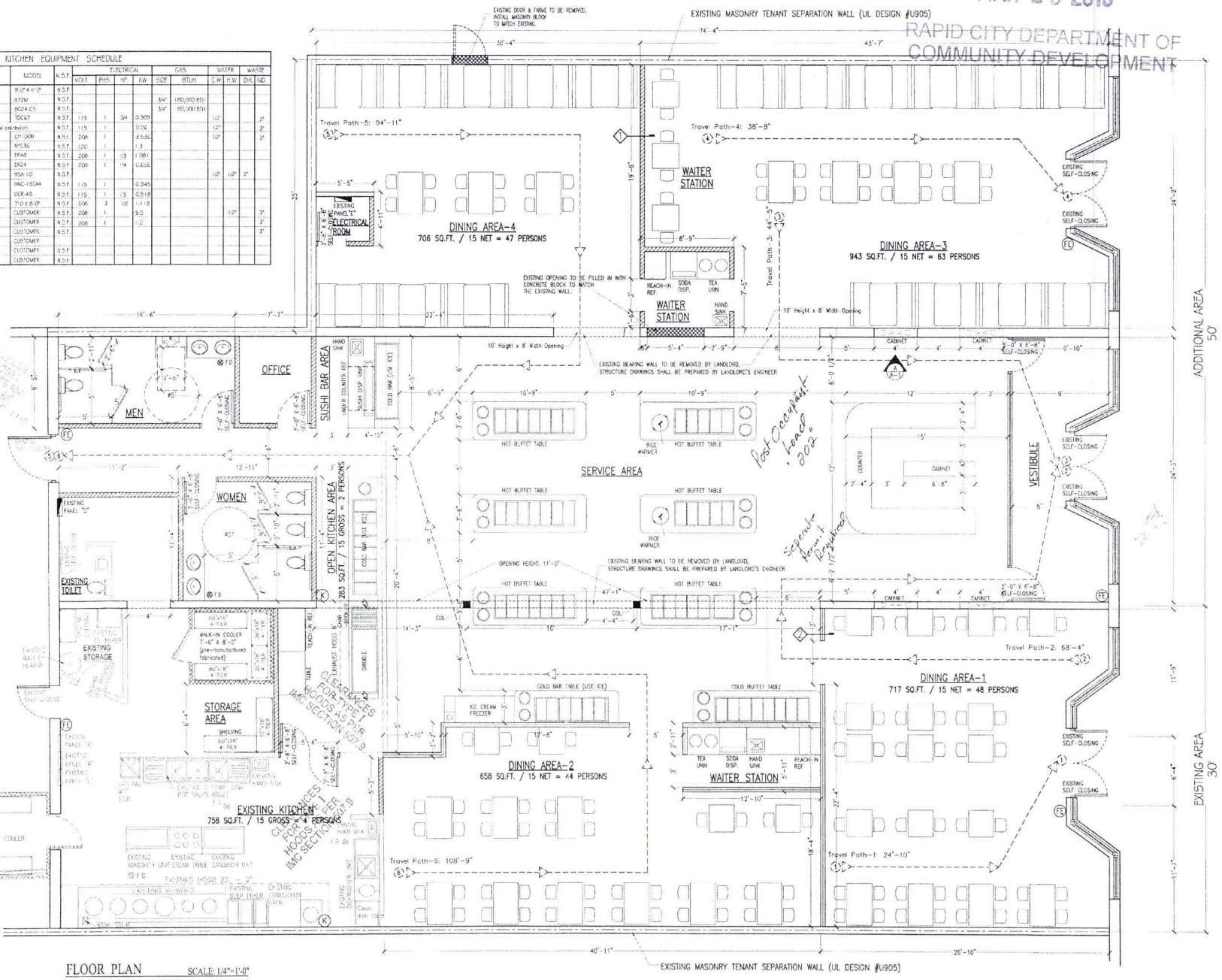
REVISIONS  
DATED: 03/08/11

DATE: 02/10/11  
SCALE: 1/4"=1'-0"  
DRAWN: JT  
JOB No. 02411

A.1

19UR007

KITCHEN EQUIPMENT SCHEDULE														
NO.	QTY	DESCRIPTION	MANUFACTURE	MODEL	N.S.F.	ELECTRICAL			GAS		WATER		WASTE	
						VOLT	PHS	SP	NW	BTU/H	G.W.	P.L.W.	DK	IND.
1	1	EXHHAUST FAN	RELIABLE	30" X 4' 0"	N.S.F.									
2	1	WARMER	SILVER MAX	272M	N.S.F.									
3	1	CLAMP BROILER	STAR MAX	3024 CS	N.S.F.					100,000 BTU				
4	1	ICE CREAM FREEZER	TRUUE	TDC67	N.S.F.	115		3/4	0.509				1/2"	3"
5	2	SOOIA DISP	To be provided by local distributor		N.S.F.	115			0.506				1/2"	3"
6	2	TEA LNS	CELLARAGE	CLT100N	N.S.F.	200			3.5-3.6				1/2"	3"
7	2	ICE WARMER	PROFESSIONAL	WIC56	N.S.F.	120			1.3				1/2"	3"
8	2	REACH-IN REF	SPRINGDALE AIR	RF40	N.S.F.	200			1.13	1.091				
9	2	REACH-IN REF	SPRINGDALE AIR	RF24	N.S.F.	200			1.14	0.624				
10	2	HAND SINK	DAIGI	HSA-10	N.S.F.								1/2"	2"
11	1	WASH TRAY UNIT	SCORPIO	TRAC-SDA	N.S.F.	115			0.3-0.45					
12	1	UNDER-COUNTER REF	DE-FRAGE AIR	UCF-45	N.S.F.	115			1.13	0.216				
13	1	WARM-IN COOLER	AMERICOOLER	7-0 X 8-0"	N.S.F.	200			3	1.1-1.3				
14	6	HOT BUFFET TABLE	RELIABLE	CUSTOMER	N.S.F.	200			1	5.0			1/2"	3"
15	1	COLD BUFFET TABLE	RELIABLE	CUSTOMER	N.S.F.	200			1	1.0				3"
16	3	COUNTER	RELIABLE	CUSTOMER	N.S.F.									3"
17	3	COUNTER	RELIABLE	CUSTOMER	N.S.F.									3"
18	4	TABLE (SQUARE SEAS)	EDGE	CUSTOMER	N.S.F.									
19	4	TABLE (SQUARE SEAS)	EDGE	CUSTOMER	N.S.F.									



FLOOR PLAN SCALE: 1/4"=1'-0"