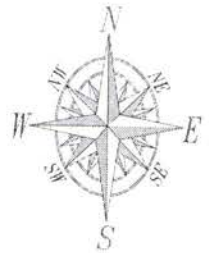
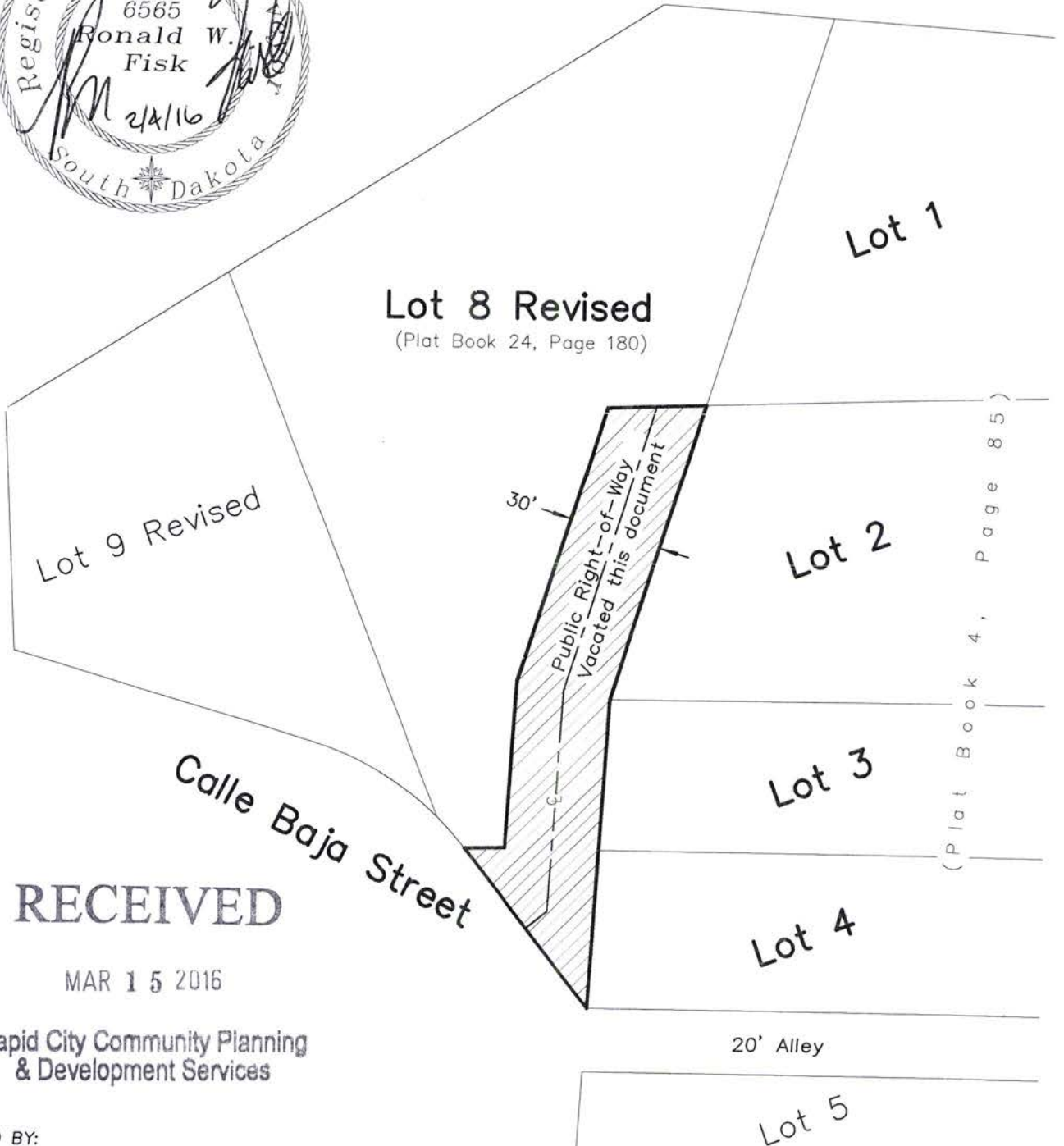


EXHIBIT A

VACATION OF RIGHT-OF-WAY ADJOINING LOTS 1, 2, 3, 4, AND LOT 8 REVISED, BLOCK 2, CANYON LAKE HEIGHTS SUBDIVISION NE 1/4 SW 1/4 SECTION 9, T1N, R7E, BHM RAPID CITY, PENNINGTON COUNTY, SOUTH DAKOTA



1"=50'



RECEIVED

MAR 15 2016

Rapid City Community Planning & Development Services

PREPARED BY:
FISK LAND SURVEYING & CONSULTING ENGINEERS, INC.
P.O. BOX 8154, RAPID CITY, SD 57709 (605) 348-1538 December 4, 2015