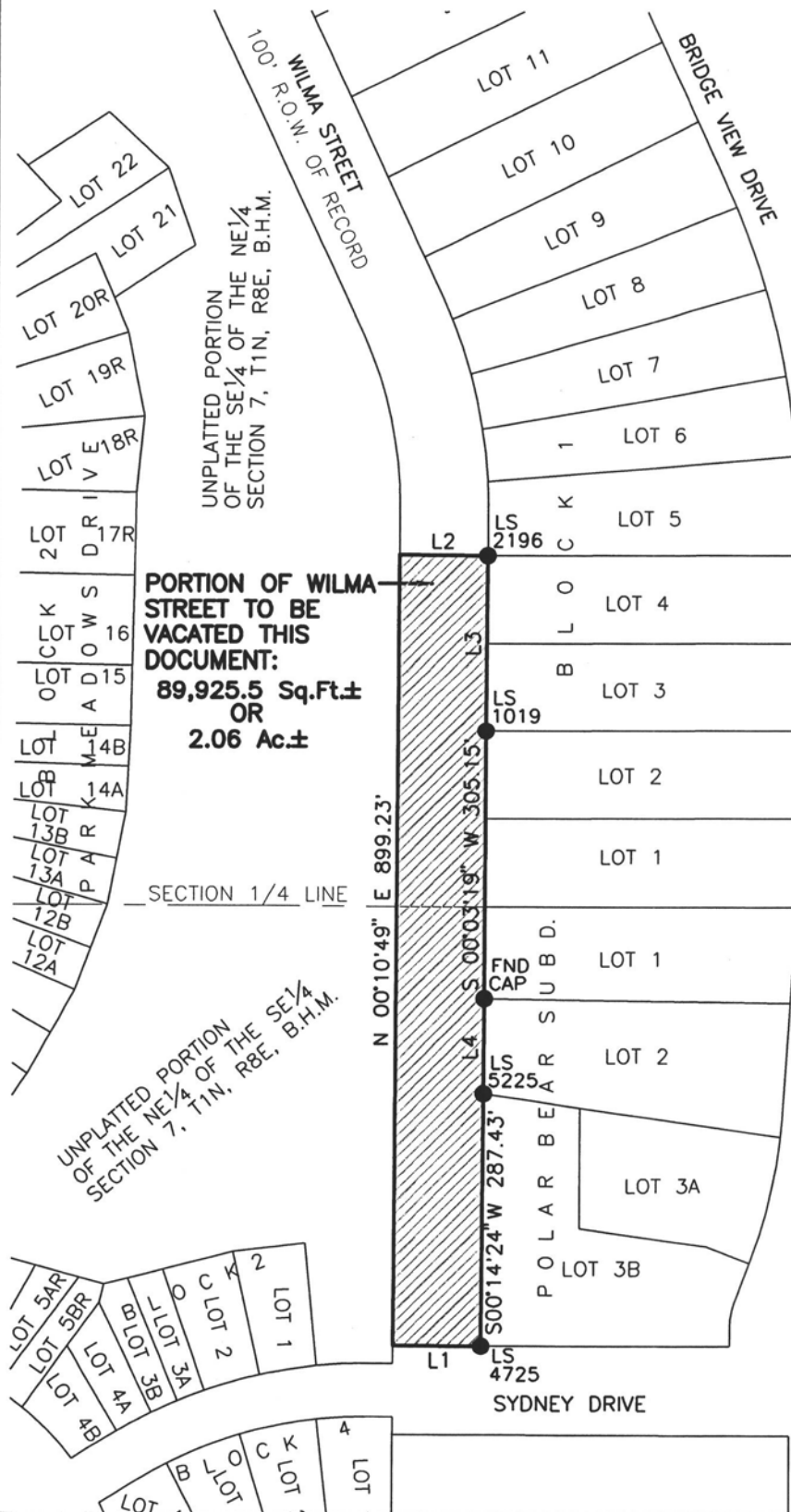


VACATION OF A PORTION OF WILMA STREET RIGHT-OF-WAY

LYING IN THE NE¹/₄ OF THE SE¹/₄ AND IN THE SE¹/₄ OF THE NE¹/₄, SECTION 7, T1N, R8E AND ADJOINING LOTS 1, 2, 3, AND 4 OF BLOCK 1 IN THE NE¹/₄ OF SECTION 7, T1N, R8E, AND ADJOINING LOTS 1 AND 2, AND LOT 3B OF POLAR BEAR SUBDIVISION, ALL LOCATED IN SECTION 7, T1N, R8E, B.H.M., RAPID CITY, PENNINGTON COUNTY, SOUTH DAKOTA



LINE	BEARING	DISTANCE
L1	N 89°45'36" E	100.00'
L2	S 89°43'14" E	100.00'
L3	S 00°16'46" W	199.66'
L4	S 00°16'13" W	106.94'

PORTION OF WILMA STREET TO BE VACATED THIS DOCUMENT:
89,925.5 Sq.Ft.±
OR
2.06 Ac.±



MARCH 22, 2016



SCALE: 1" = 200'

