

Case No. 19VR001

Legal Description:

That portion of the right-of way of East Boulevard adjacent to a previously vacated 30 foot wide strip adjacent to Lots 30 and 31 of Block 4 of Simmons Addition, located in Government Lot 1 (NE1/4NE1/4) of Section 1, T1N, R7E, BHM, Rapid City, Pennington County, South Dakota

RECEIVED

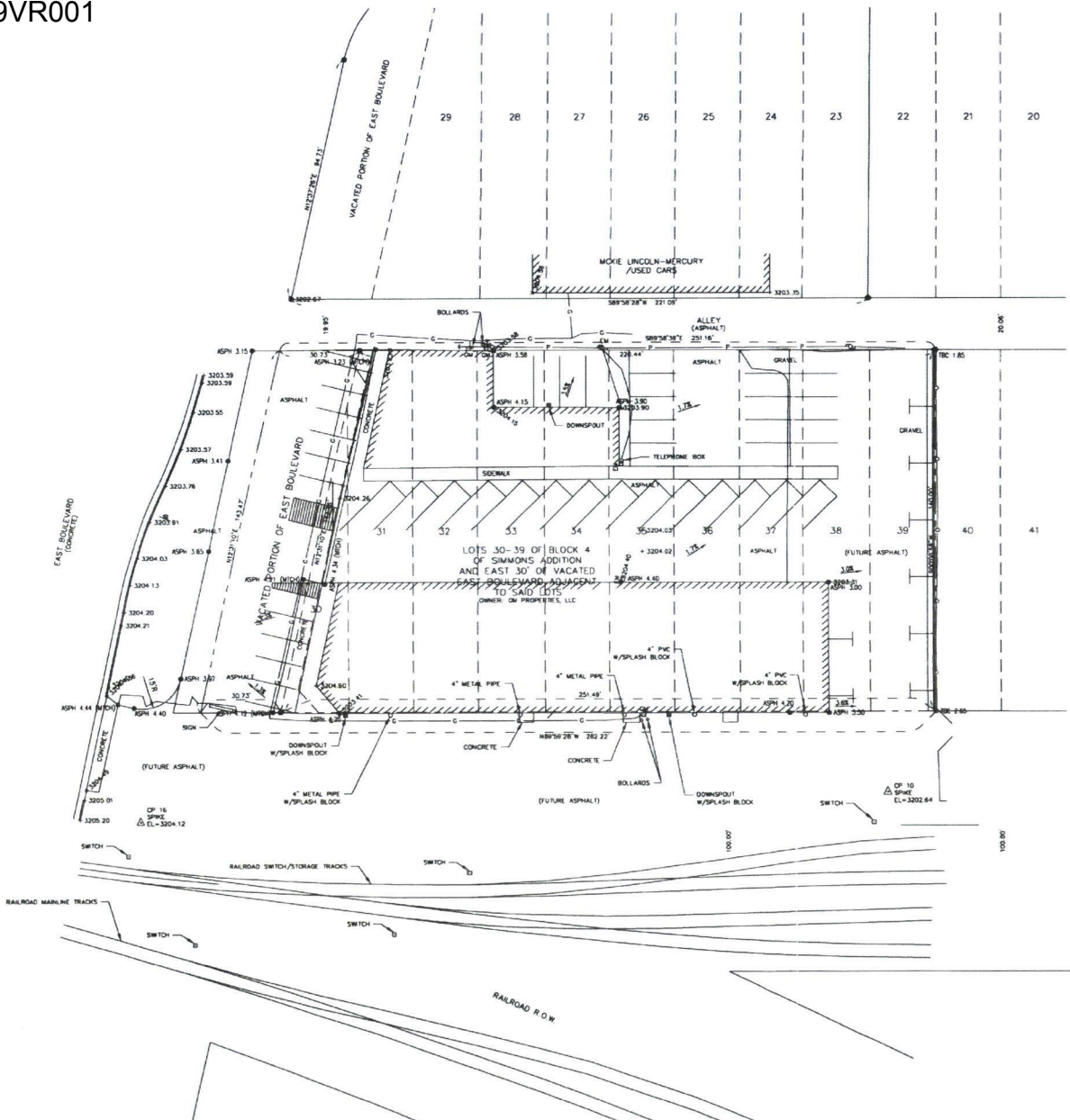
FEB 20 2019

RAPID CITY DEPARTMENT OF
COMMUNITY DEVELOPMENT

OM Properties
318 E Blvd.
Rapid City, SD 57701
(605) 381-4807

File Number:
140298
Location:
M1/A SECTION 1
T1N 47E, R1W
Surveyed By:
Date: MAY 20
Designed By:
Drawn By:
Checked By:

**LOTS 30-39 OF BLOCK 4 OF
SIMMONS ADDITION AND EAST 30'
OF VACATED EAST BOULEVARD
ADJACENT TO SAID LOTS**
RAPID CITY, SD



- LEGEND**
- △ CP 1 SURVEY CONTROL POINT
 - FOUND SURVEY MONUMENT
 - + 3203.63 SPOT ELEVATION
 - C/O CLEAN OUT
 - C/S CURB STOP
 - P POWER POLE
 - LIGHT POLE
 - E M ELECTRIC METER
 - G M GAS METER
 - G W GAS WALK
 - S SIGN
 - CHAIN LINK FENCE
 - CURB & CUTTER
 - WATER LINE
 - OVERHEAD POWER LINE
 - GAS LINE
 - S SANITARY SEWER LINE
 - TELEPHONE LINE
 - CONTOUR (1')
 - CONTOUR (5')

NOTE REGARDING UTILITIES
UNLESS OTHERWISE NOTED, UTILITY LOCATIONS SHOWN ARE BASED ON FIELD MARKED LOCATIONS PROVIDED BY SOUTH DAKOTA ONE CALL AND WHERE POSSIBLE, FIELD MEASUREMENTS. EXISTENCE AND LOCATION OF ACTUAL UTILITIES MAY VARY FROM THAT SHOWN. CONTRACTOR MUST VERIFY LOCATION OF ALL UTILITIES BEFORE EXCAVATION.

BENCH MARK
CITY BENCH MARK 1046
NOV 29
E.L. = 3203.15
LOCATED ON THE NORTHEAST ABUTMENT OF THE BRIDGE OVER RAPID CREEK ON MARLE AVENUE, APPROXIMATELY 140' SOUTH OF THE INTERSECTION OF MARLE AVENUE AND EAST SAINT LOUIS STREET

CONTROL TABLE			
NUMBER	NORTHING	EASTING	DESCRIPTION
10	10134.0110	10302.8890	3202.64 SPIKE

Revision / Date
Sheet Name:
SITE PLAN MAP
Sheet Number:
1 of 1

"EXHIBIT A"

PREVIOUSLY VACATED PORTION OF EAST BOULEVARD, DOCUMENT NO. A201602082

VACATED PORTION OF EAST BOULEVARD MISC. BOOK 48, PAGE 7728

EAST BOULEVARD

SIMMON'S ADDITION BLOCK 4

AREA OF EAST BOULEVARD RIGHT OF WAY TO BE VACATED WITH THIS INSTRUMENT

N89°59'28"W 10.24' "X" IN CONCRETE

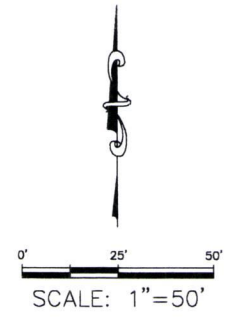
DRAFT

E. RAPID STREET

RECEIVED

FEB 20 2019

RAPID CITY DEPARTMENT OF COMMUNITY DEVELOPMENT



EAST BOULEVARD RIGHT OF WAY VACATION PORTION OF THE RIGHT OF WAY OF EAST BOULEVARD ADJACENT TO A PREVIOUSLY VACATED 30' WIDE STRIP ADJACENT TO LOTS 30 AND 31 OF BLOCK 4, SIMMON'S ADDITION, LOCATED IN 'GOVERNMENT' LOT 1 (NE1/4 NE1/4), SECTION 1, T1N, R7E, B.H.M., RAPID CITY, PENNINGTON COUNTY, SOUTH DAKOTA

OCTOBER 6, 2018

Surveyed By: LF/GPS Date: MAY 2014 Drawn By: KJS Checked By: DW Location: NE1/4 SECTION 1 T1N, R7E, BHM



F M G, Inc.

3700 Sturgis Road Rapid City, SD 57702-0317 (605) 342-4105 FAX (605) 342-4222 www.fmgengineering.com

19VR001

