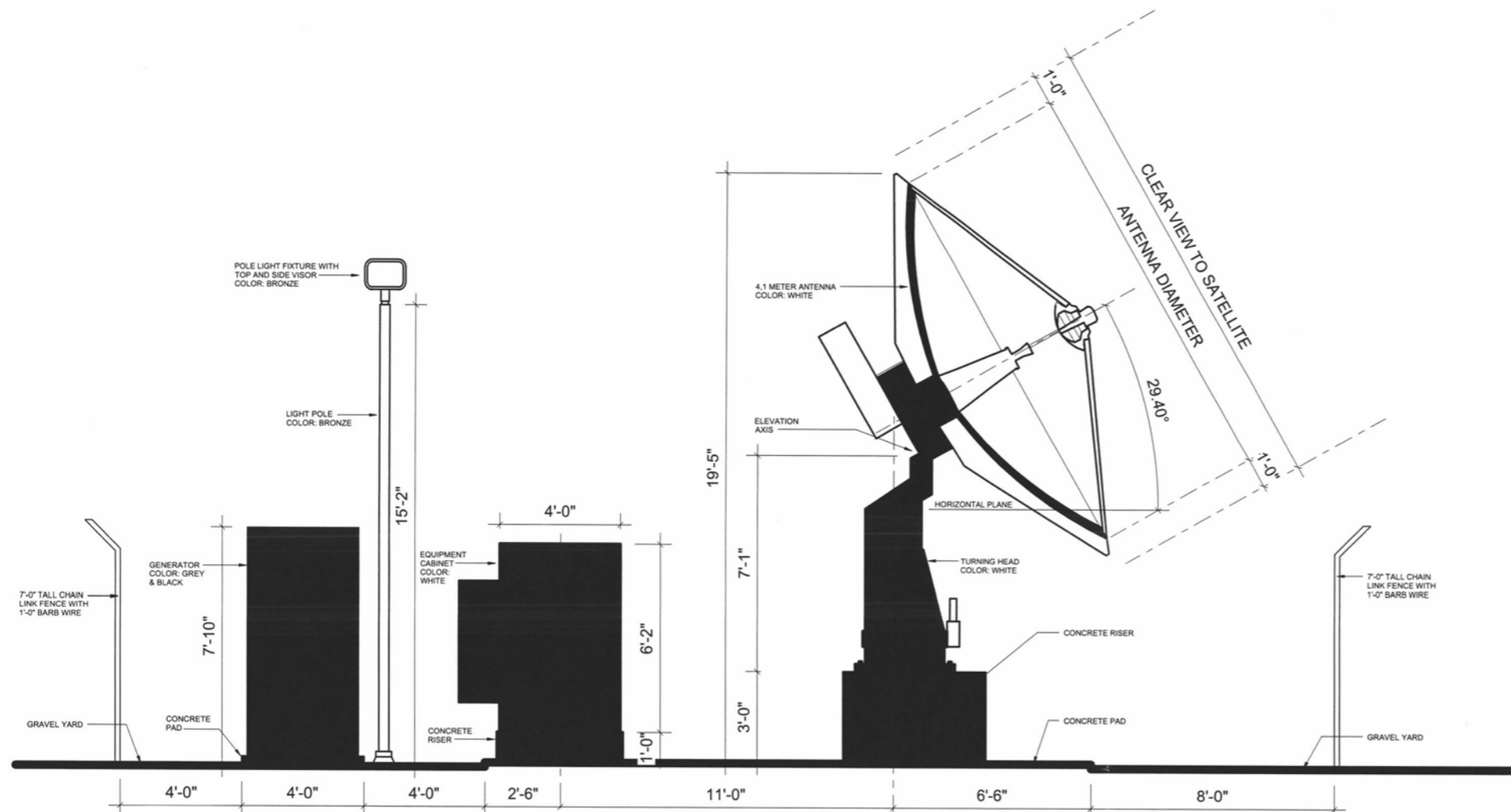


16UR007



NOTE: ALL CONCRETE PADS OR RISERS ARE GREY IN COLOR UNLESS NOTED OTHERWISE.

**COMPOUND ELEVATION**  
SCALE: 1" = 5'-0"

**CROFT & ASSOCIATES**

Croft & Associates  
3400 Blue Springs Road, Suite 200  
Kennesaw, Georgia 30144  
770.529.7714 (p) 770.529.7716 (f)  
www.croftandassociates.com

No.	Date	Description
A	02-08-16	75% REVIEW SET
B		
C		
ISSUANCE		

**ViaSat**

**AFTERBURNER 2**  
RAPID CITY  
(4.1M ANTENNA)  
SHEET TITLE  
**COMPOUND ELEVATION**

DESIGNED: RGL  
DRAWN: MSO  
CHECKED: JM

PROJECT NUMBER  
**2014-167.24**

SHEET NO.  
**G-2.5**

**75%  
REVIEW  
SET**



#### LOCAL TRAFFIC IMPACT

The construction, equipment installation, and test period phases requires about 5 to 6 weeks in total to complete (there may be some gaps between phases based on personnel and equipment availability). The crew sizes are typically 3 to 4 workers. We anticipate the traffic impact during these phases to be minimal.

A service technician will be assigned to the proposed gateway to maintain the site through the life of the project. The proposed gateway is an unmanned facility which is remotely monitored 24/7 by ViaSat's Network Operations Center. Under normal conditions, the service technician will only need to visit the site every 2 to 4 weeks.

#### CLOSING

If there are any questions about the proposed installation, please feel free to reach out to me.



Sang Yi  
ViaSat Deployment Manager  
[sang.yi@viasat.com](mailto:sang.yi@viasat.com)  
480-848-6597 (Mobile)