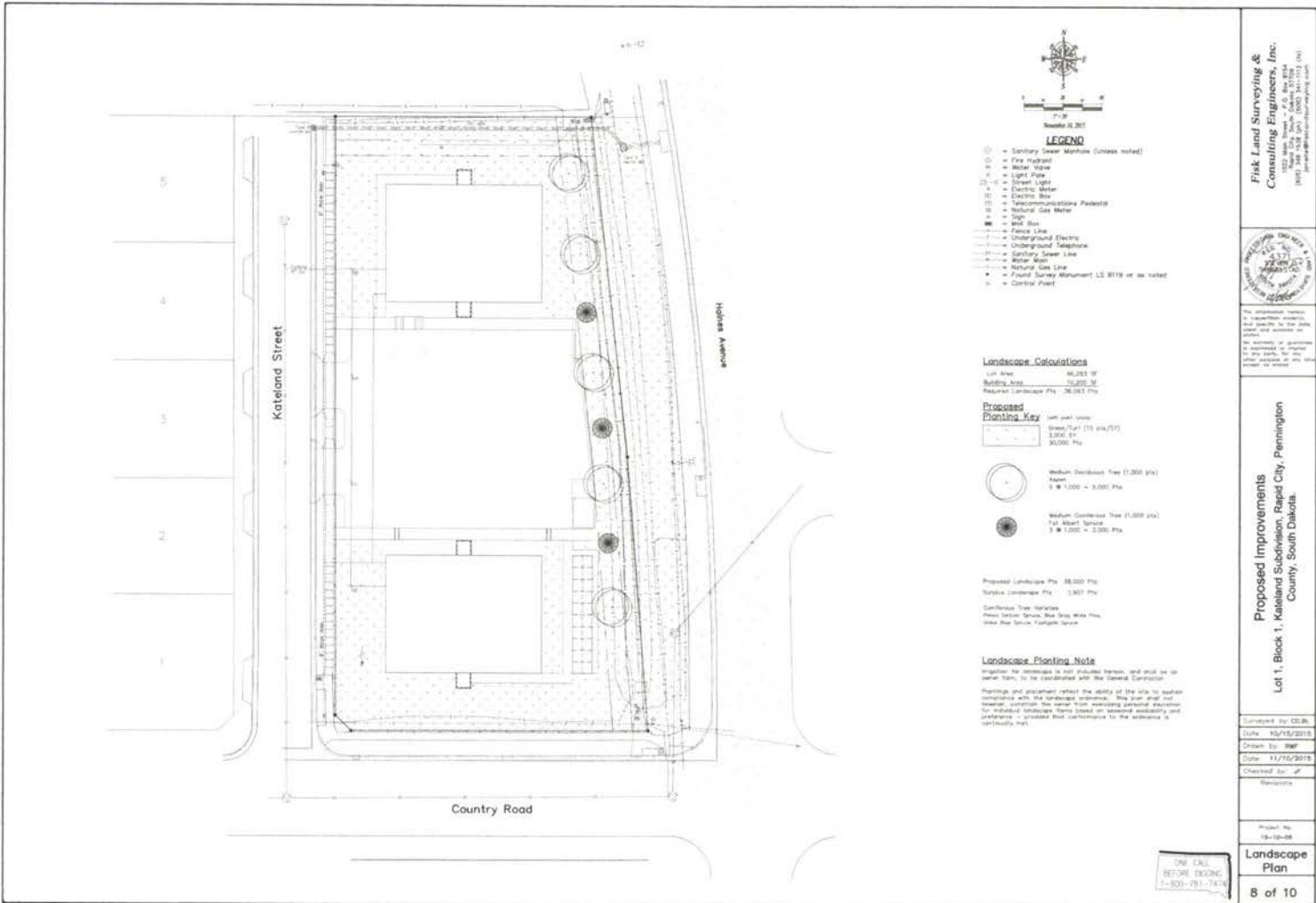


RECEIVED

MAR 24 2016

RAPID CITY COMMUNITY PLANNING & DEVELOPMENT SERVICES



Fisk Land Surveying & Consulting Engineers, Inc.
 1022 25th Street, P.O. Box 9284
 Rapid City, SD 57709
 (605) 345-1538 (F) (605) 345-1112 (H)
 www.fisklandsurveying.com



This is a preliminary drawing. It is not to be used for construction or other purposes without the approval of the engineer. The engineer assumes no responsibility for any errors or omissions in this drawing or for any consequences that may result therefrom.

Proposed Improvements
 Lot 1, Block 1, Kaledand Subdivision, Rapid City, Pennington County, South Dakota

Designed by: JCB
 Date: 10/15/2015
 Drawn by: JHP
 Date: 11/16/2015
 Checked by: JHP

Project No:
 15-10-08

Landscape Plan
 8 of 10

ONE CALL
 BEFORE YOU DIG
 1-800-781-7474