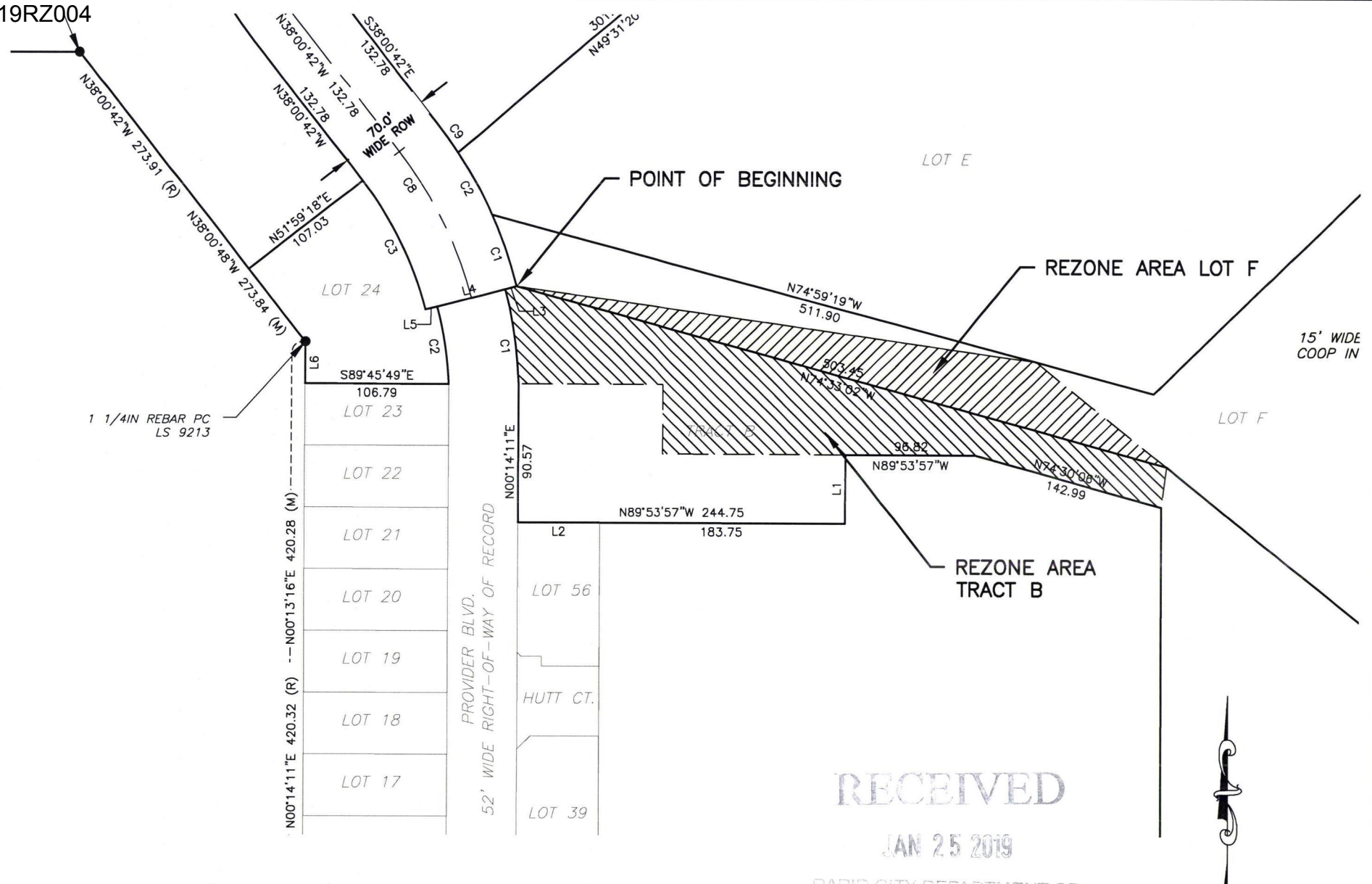


Case No. 19RZ004

Legal Description:

Lot F of Johnson Ranch Subdivision, Section 9, T1N, R8E, BHM, Rapid City, Pennington County, South Dakota, more fully described as follows: Commencing at the Northwest Corner of Tract B, common to Lot F, of Johnson Ranch Subdivision, located in Section 9, T1N, R8E, BHM, Rapid City, Pennington County, South Dakota; the point of beginning; Thence first course: S81°47'53"E, a distance of 391.73 feet, Thence second course: S51°16'05"E, a distance of 125.03 feet; Thence third course: N74°33'02"W, a distance of 503.45 feet; to the point of beginning and Tract B of Johnson Ranch Subdivision, Section 9, T1N, R8E, BHM, Rapid City, Pennington County, South Dakota, more fully described as follows: Commencing at the Northwest Corner of Tract B, common to Lot F, of Johnson Ranch Subdivision, located in Section 9, T1N, R8E, BHM, Rapid City, Pennington County, South Dakota; the point of beginning; Thence first course: S74°33'02"E, a distance of 503.45 feet, Thence second course: S07°28'21"W, a distance of 30.29 feet; Thence third course: N74°33'02"W, a distance of 142.98 feet; Thence fourth course: N89°47'52"W, a distance of 96.80 feet; Thence fifth course: N89°53'57"W, a distance of 136.91 feet; Thence sixth course: N00°05'03"E, a distance of 52.00 feet; Thence seventh course: N89°53'57"W, a distance of 108.20 feet; Thence eighth course: on a curve turning to the left with an arc length of 71.91 feet, with a radius of 326.00 feet, with a chord bearing of N08°19'03"W, with a chord length of 71.77 feet; Thence ninth course: N75°21'47"E, a distance of 9.00 feet; to the point of beginning

19RZ004

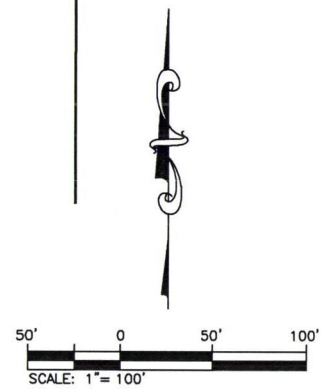


RECEIVED

JAN 25 2019

RAPID CITY DEPARTMENT OF COMMUNITY DEVELOPMENT

REZONE EXHIBIT
GENERAL COMMERCIAL TO MDR
 JOHNSON RANCH SUBDIVISION
 RAPID CITY, SOUTH DAKOTA
 JANUARY 25, 2019

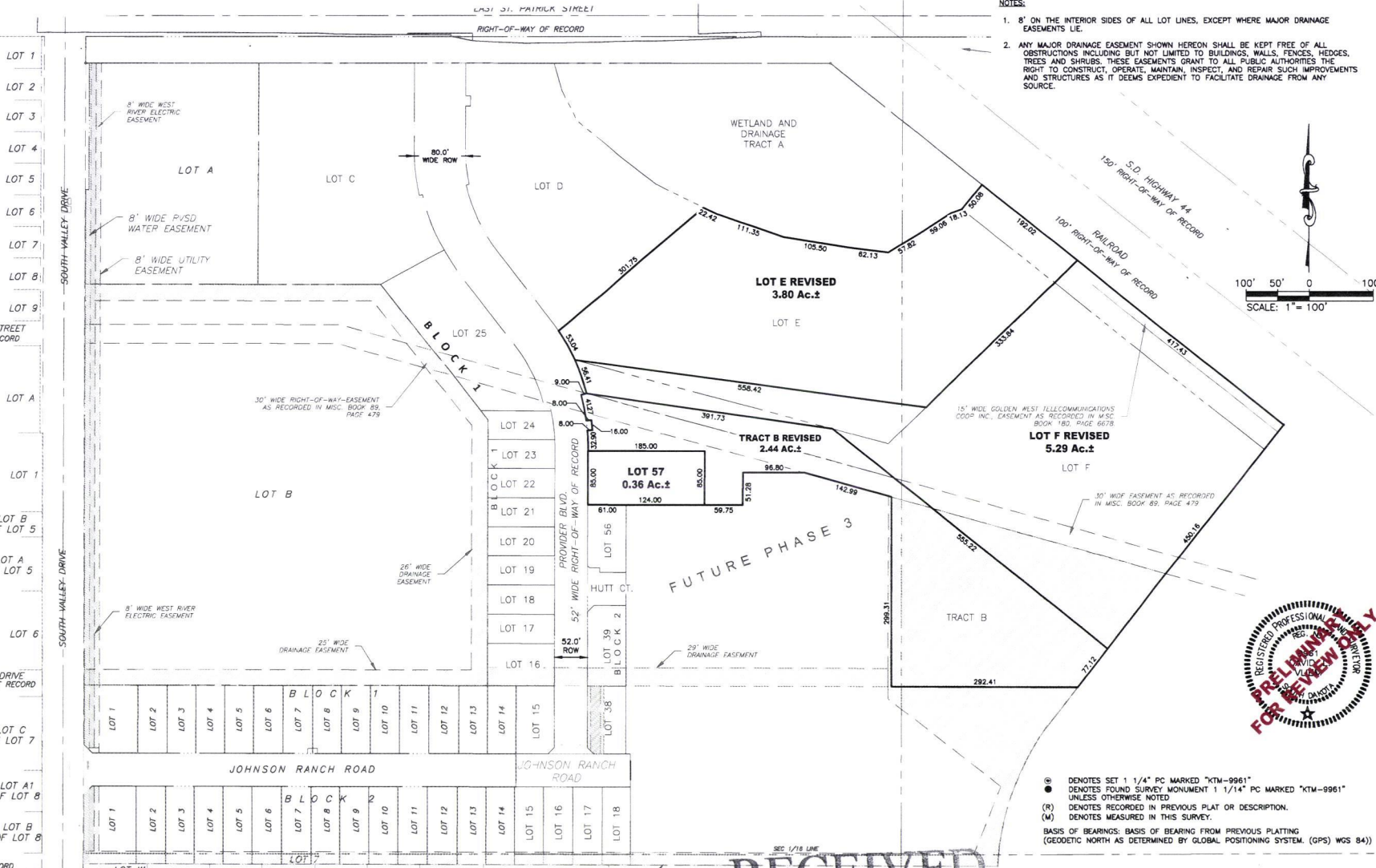


PRELIMINARY FOR REVIEW ONLY

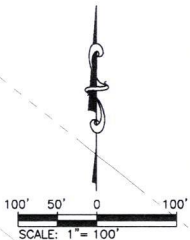
KTM
 DESIGN SOLUTIONS, INC.
 CIVIL ENGINEERING | LAND PLANNING | CONSTRUCTION ADMINISTRATION
 www.ktmdesignsolutions.com

528 Kansas City St
 Rapid City, SD 57701
 [p] 605.791.5866
 [f] 605.791.5863
 [e] engineers@ktmcsi.com

PLAT OF
LOT 57 OF BLOCK 2, LOT E REVISED, LOT F REVISED AND TRACT B REVISED
JOHNSON RANCH SUBDIVISION
(formerly Tract B, Lot E and Lot F of Johnson Ranch Subdivision)
ALL IN SECTION 9, T1N, R8E, B.L.H.M.,
RAPID CITY, PENNINGTON COUNTY, SOUTH DAKOTA.



- NOTES:**
1. 8' ON THE INTERIOR SIDES OF ALL LOT LINES, EXCEPT WHERE MAJOR DRAINAGE EASEMENTS LIE.
 2. ANY MAJOR DRAINAGE EASEMENT SHOWN HEREON SHALL BE KEPT FREE OF ALL OBSTRUCTIONS INCLUDING BUT NOT LIMITED TO BUILDINGS, WALLS, FENCES, HEDGES, TREES AND SHRUBS. THESE EASEMENTS GRANT TO ALL PUBLIC AUTHORITIES THE RIGHT TO CONSTRUCT, OPERATE, MAINTAIN, INSPECT, AND REPAIR SUCH IMPROVEMENTS AND STRUCTURES AS IT DEEMS EXPEDIENT TO FACILITATE DRAINAGE FROM ANY SOURCE.



- ⊙ DENOTES SET 1 1/4" PC MARKED "KTM-9961"
 - DENOTES FOUND SURVEY MONUMENT 1 1/4" PC MARKED "KTM-9961" UNLESS OTHERWISE NOTED
 - (R) DENOTES RECORDED IN PREVIOUS PLAT OR DESCRIPTION.
 - (M) DENOTES MEASURED IN THIS SURVEY.
- BASIS OF BEARINGS: BASIS OF BEARING FROM PREVIOUS PLATTING (GEODEIC NORTH AS DETERMINED BY GLOBAL POSITIONING SYSTEM. (GPS) WGS 84))

RECEIVED

FEB 14 2019

RAPID CITY DEPARTMENT OF
COMMUNITY DEVELOPMENT