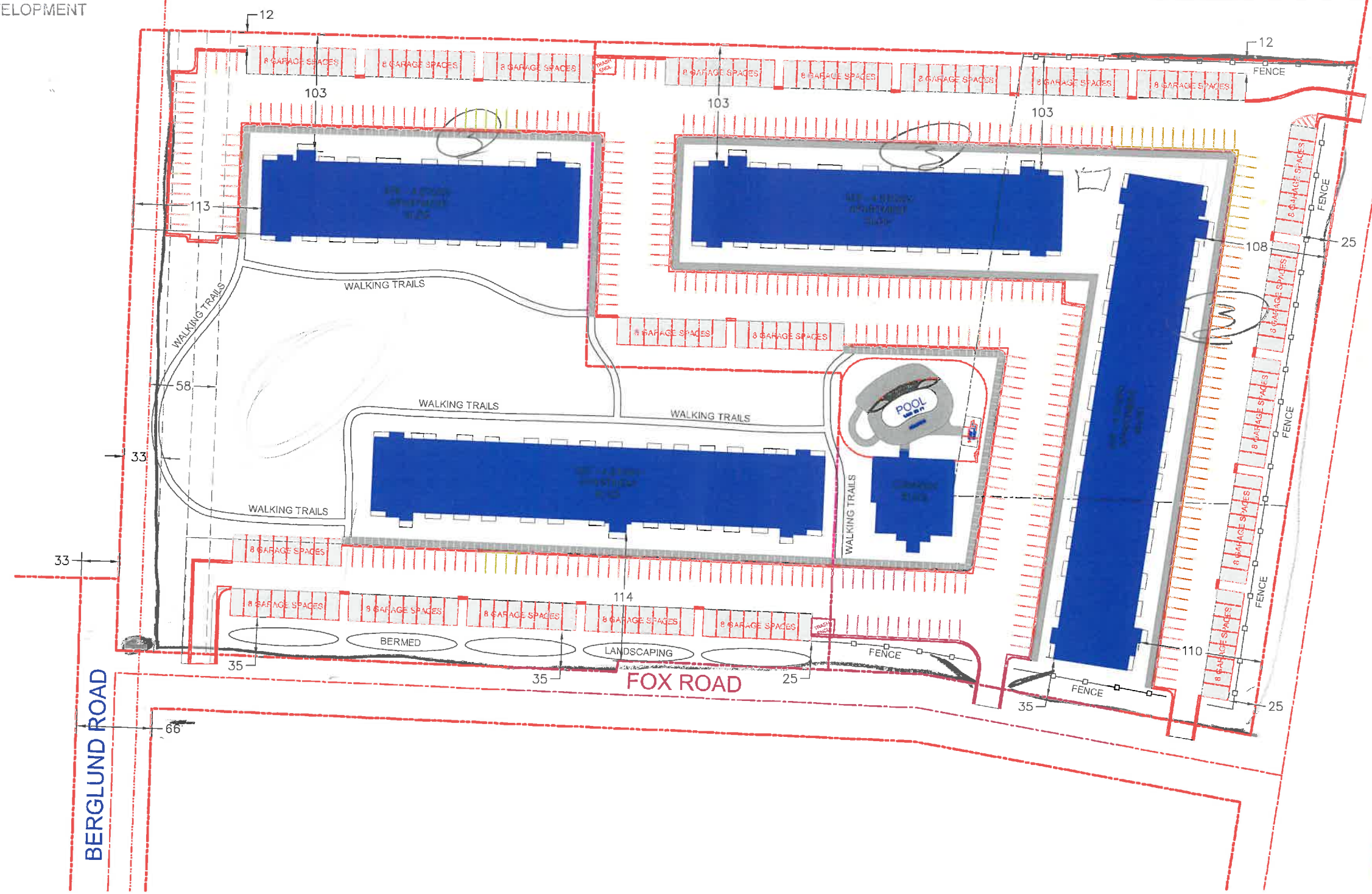


All 4-story

RECEIVED

JAN 25 2019

RAPID CITY DEPARTMENT OF
COMMUNITY DEVELOPMENT



MOUNT RUSHMORE ROAD/HWY16

REVISIONS:	DATE:



WILLADSEN LUND ENGINEERING
902 SOUTH CLEVELAND AVENUE
SIOUX FALLS, SOUTH DAKOTA 57103 (605)338-8950

OWNER: **SAMUELSON DEVELOPMENT**
HWY16/MOUNT RUSHMORE ROAD

SKETCH PLAN

DRAWING No.	2018-111	SHEET
DRAWN BY	TWL	C1
APPROVED BY	EPW	
DATE	SEPT2018	



SANBORN
ADVERTISING

Photo illustration provided by Sanborn Advertising, Marketing & Public Relations
Rapid City, SD 605-390-3914 • sanbornads.com



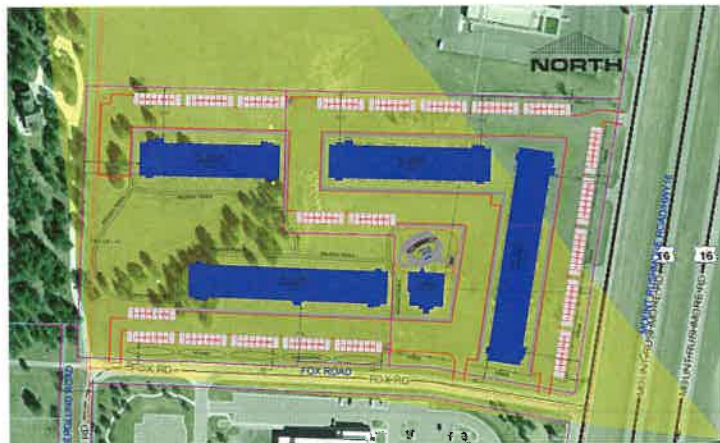
SANBORN
ADVERTISING

Photo illustration provided by Sanborn Advertising, Marketing & Public Relations
Rapid City, SD 605-390-3914 • sanbornads.com



SANBORN
ADVERTISING

Photo illustration provided by Sanborn Advertising, Marketing & Public Relations
Rapid City, SD 605-390-3914 • sanbornads.com



SANBORN
ADVERTISING

Photo illustration provided by Sanborn Advertising, Marketing & Public Relations
Rapid City, SD 605-390-3914 • sanbornads.com