

No.	Date	Description

NOTE: Bid documents should not be opened or removed as part of the bid process. Bidders are responsible for all portions of the documents that pertain to work covered by bid items. Bidder assumes full responsibility for error or misinterpretation resulting from public sale of Bidding Documents by host or any sub-host.

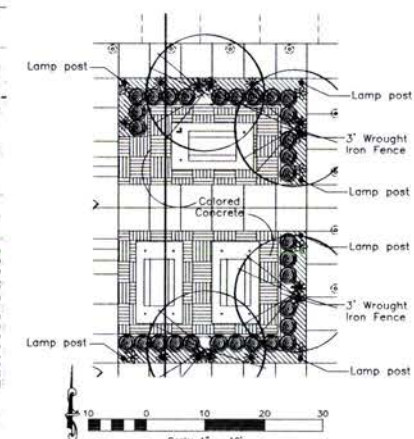
Conflicting information or errors found in the construction documents should be brought to the attention of the architect immediately, in the event of a conflict, the design architect should receive the final response which will meet the project requirements.

ADVENTURE'S FIRST STOP
MAVERIK

MAVERIK, INC. STORE #???
NORTH ST. & LACROSSE ST.
RAPID CITY, SOUTH DAKOTA

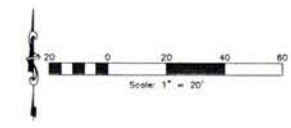
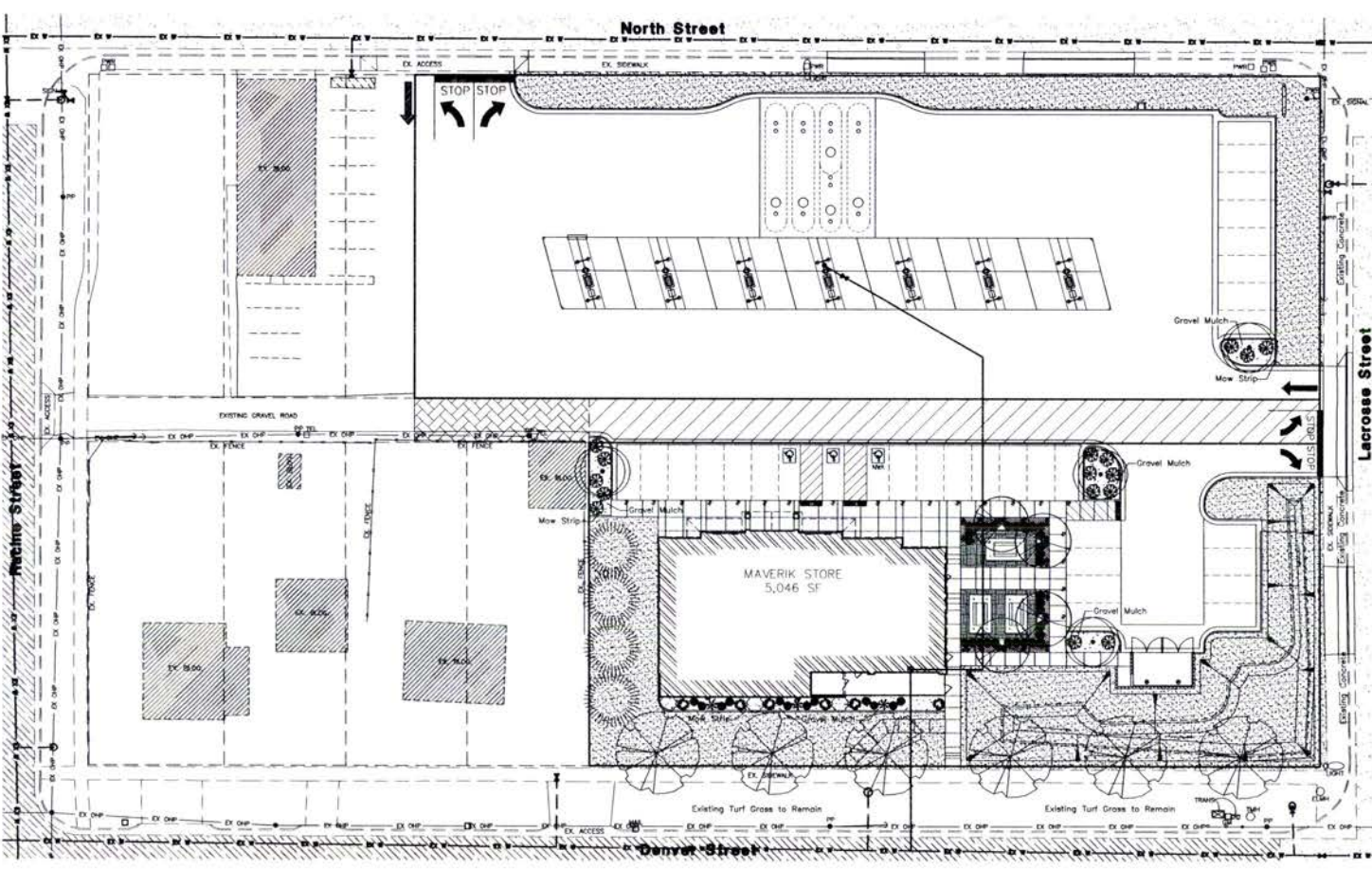
SHEET TITLE
LANDSCAPE PLAN

L1



PICNIC AREA DETAIL

- 3 Picnic tables covered by shade trellis
- Bark Mulch in all picnic area beds
- Lamp posts have hanging flower baskets
- Stamped, colored concrete in picnic area
- Interplant annual flowers in picnic area beds



Reeve & Associates, Inc.
120 CHAMBERS STREET, SUITE 14
RAPID CITY, SD 57701
TEL: (605) 421-3100
FAX: (605) 421-3666
WWW.REEVE-ASSOCIATES.COM

LEAD PLANNING • CIVIL DESIGN
LAND SERVICES • PLANNING SERVICES
ARCHITECTURAL SERVICES • LANDSCAPE ARCHITECTURE

PROJECT NUMBER: 5799-300
DRAWN BY: RWB
ENGINEER: JRS