

5'x7'2" internally illuminated cabinet



Black Hills
FEDERAL CREDIT UNION



3'8"x6'9' RGB, LED with fillers

Handwritten vertical line with '10'' written next to it, indicating a height measurement.

Handwritten arrow pointing down with 'ec' written next to it, indicating a specific detail or measurement.

605-342-0481
Fax: 605-342-9474
1650 Samco Road
Rapid City, S.D. 57702

ROSENBAUM'S
SIENS
and Outdoor Adv. Inc.

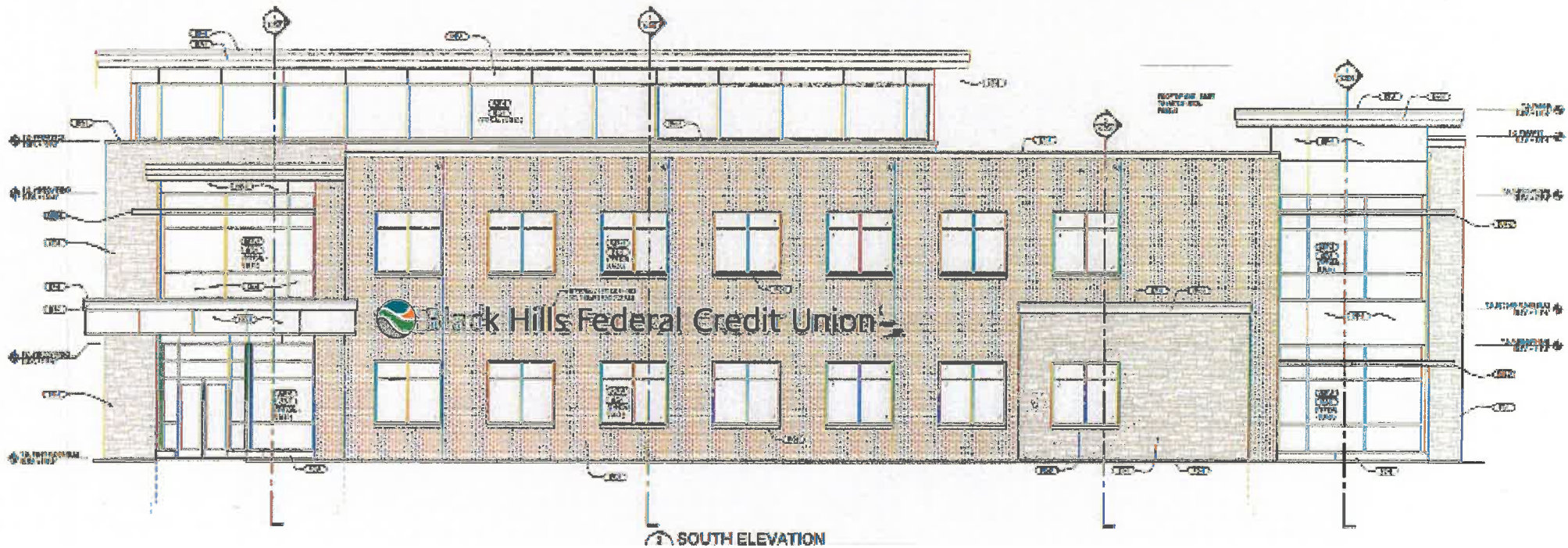
*Signage Rapid City
With Pride
Since 1928*


42"

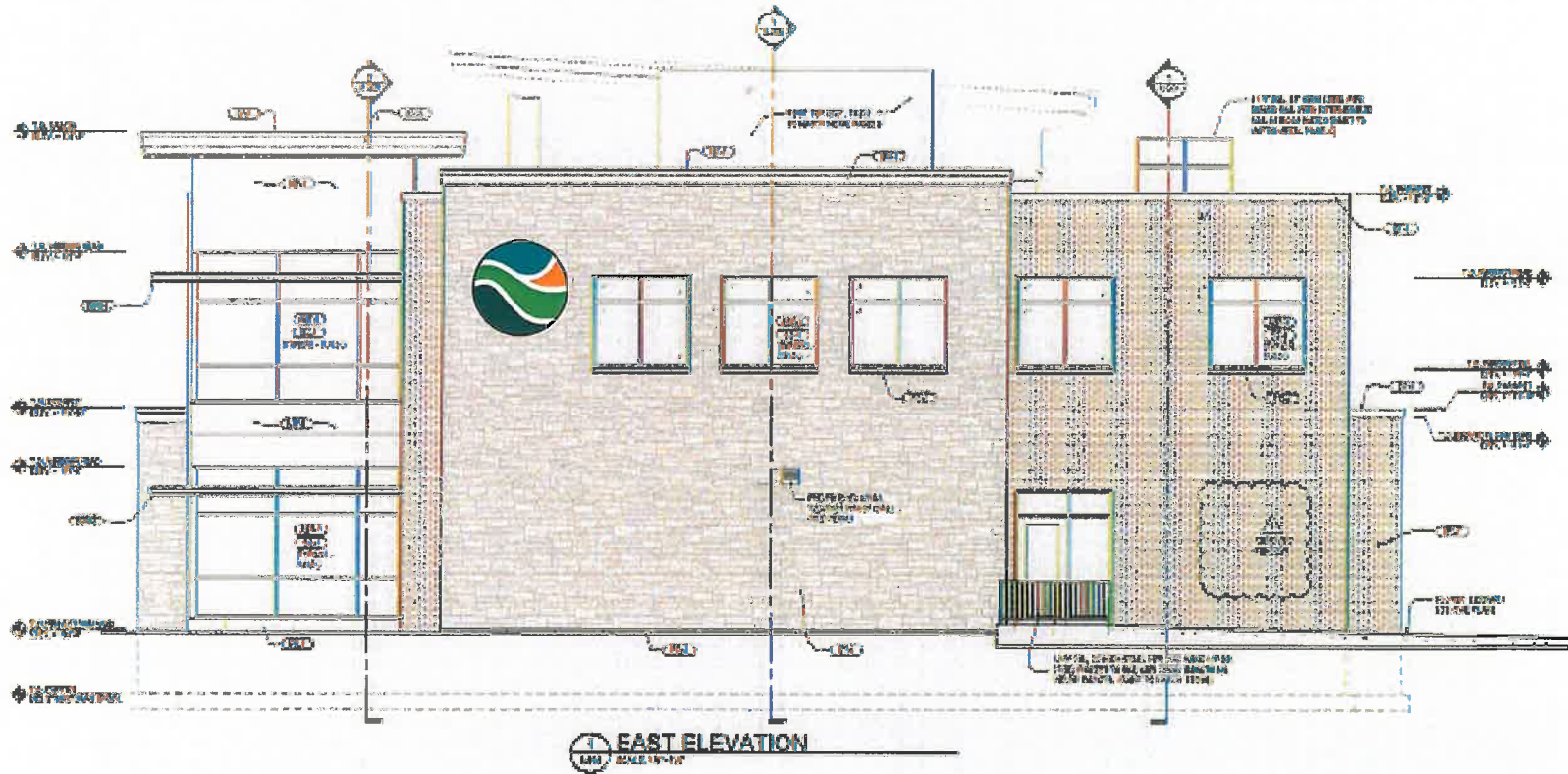
43' 10" Overall length



Black Hills Federal Credit Union 24"



72" Dia



$\frac{1}{4}$ " - scale



 **Black Hills Federal Credit Union**