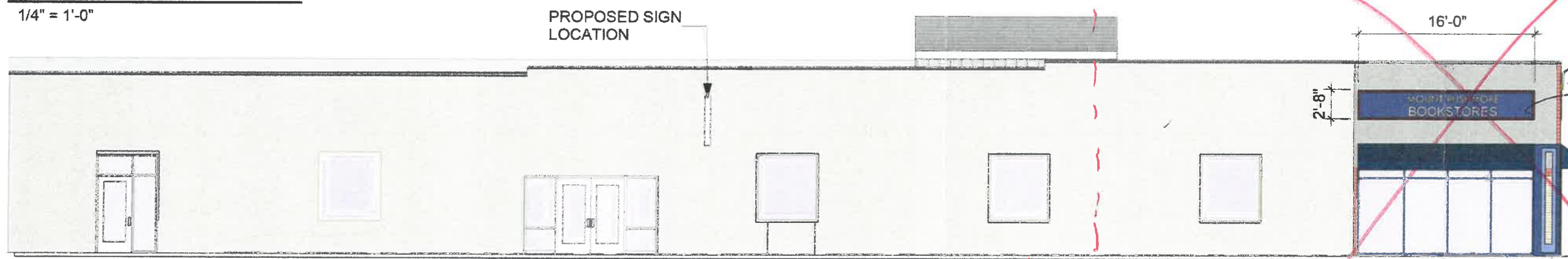




SOUTH ELEVATION

1/4" = 1'-0"



WEST ELEVATION

3/32" = 1'-0"

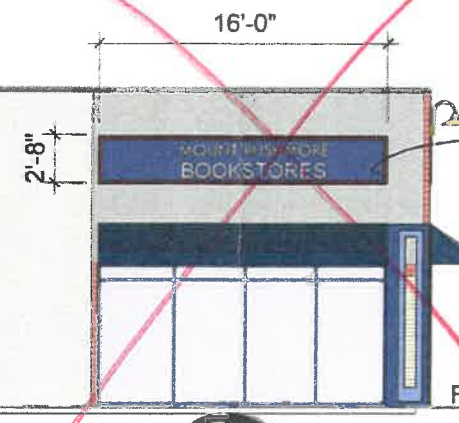
2 - SINGLE FACE 54"x48" BLADE SIGNS



PROPOSED SIGNAGE

NTS

FIRST FLOOR
100'-0"



FIRST FLOOR
100'-0"

41.6 sq ft

CO
Arch **OP**

(A) This sign maxes sq. footage
(B) Needs variance for size; not in historic district
(C) Needs variance for size; located in historic district

PROJECT:
 MOUNT RUSHMORE SOCIETY
 MOUNT RUSHMORE SOCIETY
 RAPID CITY, SOUTH DAKOTA
 CO-OP PROJECT NO: 1732

SHEET TITLE:
 RUSHMORE SIGN REVIEW

A1

HISTORIC REVIEW
 SEPT 12th



