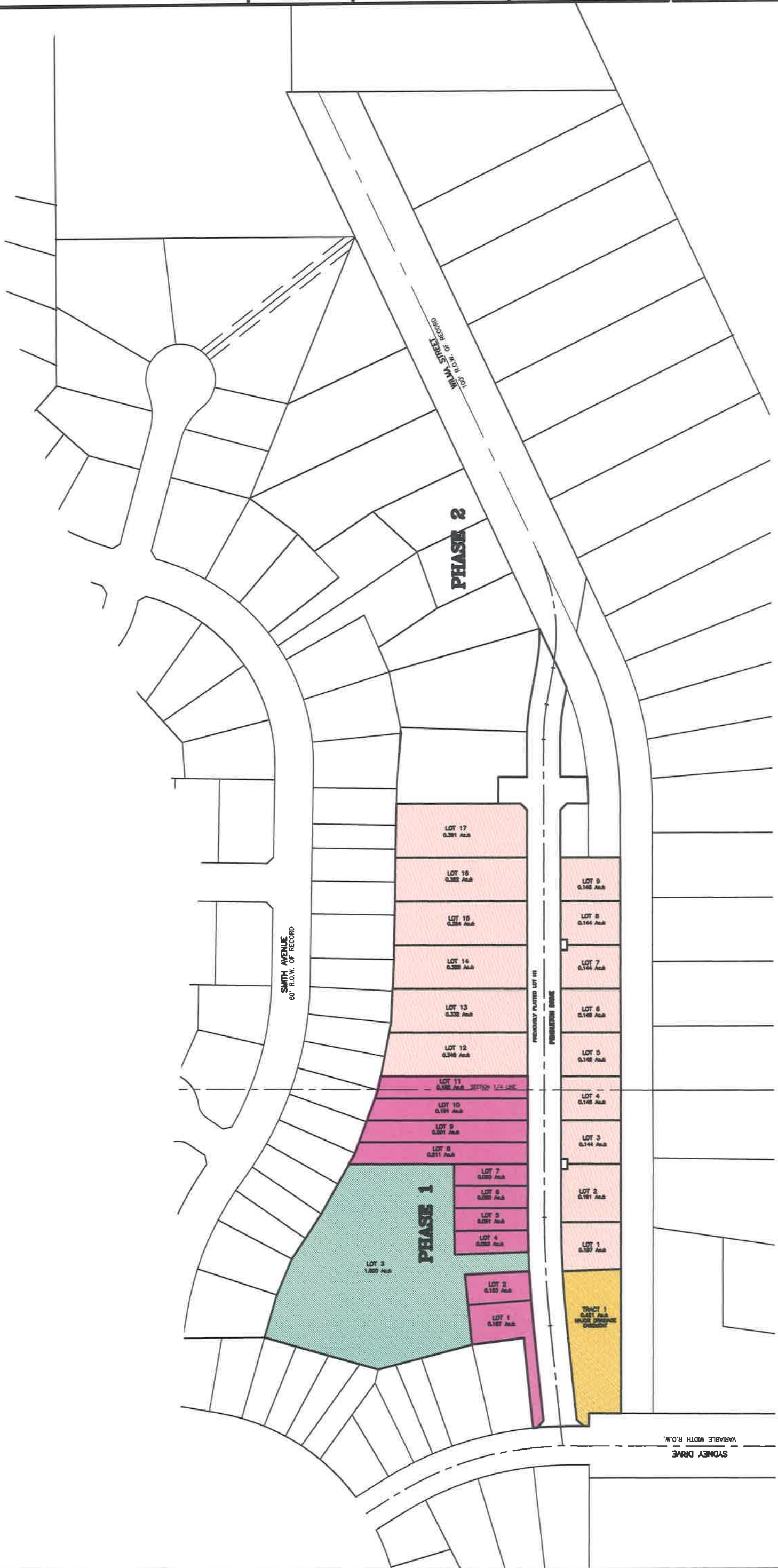


PHASE 1 PLATING
PARK HILL SUBMISSION NO. 7

SPEKLICH
Consulting, Inc.
821 Columbu St. Suite 1 Rapid City SD 57701
E-MAIL: info@speklitchconsulting.com
TELE: (605) 721-4040
Engineering Surveying Planning

REVISION	DATE	CITY REVISIONS
1	03/08/17	

LEGAL DESCRIPTION:
SUBMITTED BY: SCI
DRAWN BY: DMH



- PHASE 1 PLATING**
- TOWN HOMES (10 TOTAL LOTS)
 - DUPLEXES (16 TOTAL LOTS)
 - APARTMENT LOT (1 TOTAL LOT)
 - DRAINAGE LOT (1 TOTAL LOT)

