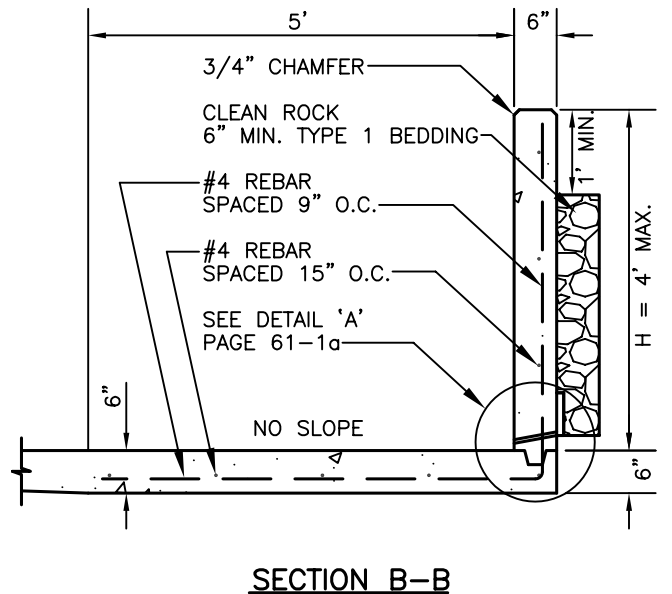
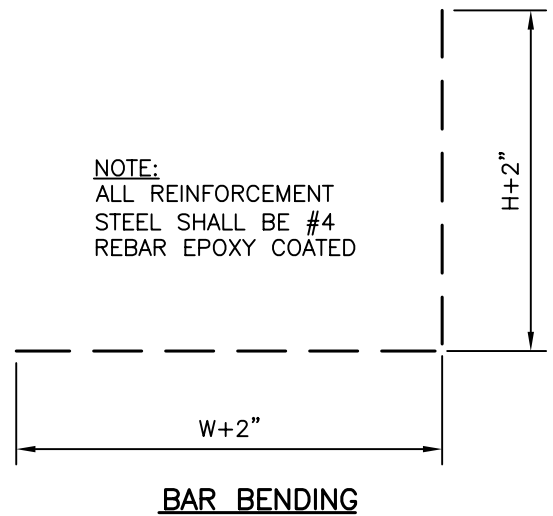


NOTE:
ALL REINFORCEMENT STEEL SHALL BE #4 REBAR EPOXY COATED



CITY OF RAPID CITY

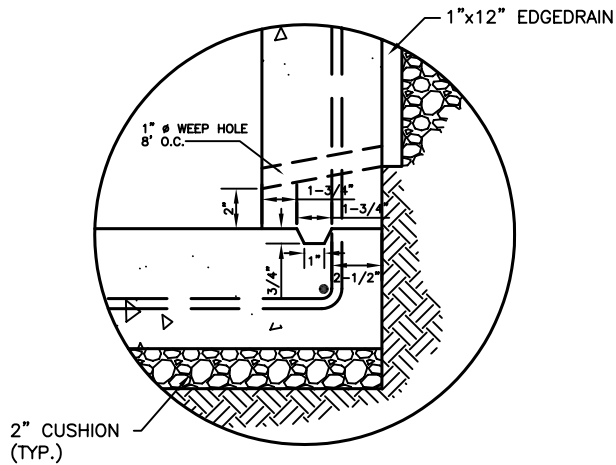
PUBLIC WORKS DEPARTMENT

TYPE "C" RETAINING WALL

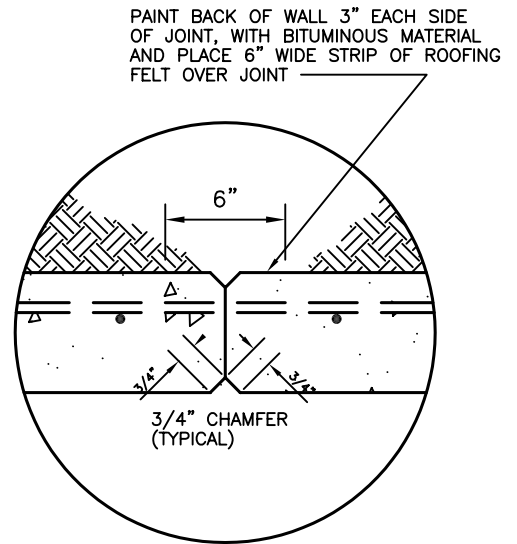
DATE: 5-1-07

SEC. SHT.

61-1



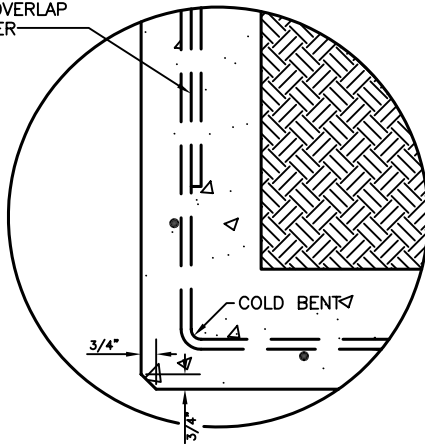
DETAIL 'A'



JOINTS SPACED 15' MAX. & COINCIDE WITH SIDEWALK JOINTS.

DETAIL 'B'
PLAN VIEW

OVERLAP REBAR
MIN. OF 15" OVERLAP
& TIE TOGETHER



DETAIL 'C'
PLAN VIEW

GENERAL NOTES:

1. CONCRETE FOR RETAINING WALLS SHALL BE POURED ON UNDISTURBED SOIL. ANY NECESSARY BACK FILLING SHALL BE WITH A MECHANICAL TAMPER, OR AS APPROVED BY THE ENGINEER.
2. THE CONTRACTOR MUST USE KEY JOINT WHEN THE SLAB AND THE WALL ARE POURED SEPARATELY. (SEE DETAIL 'A').
3. A 3/4" CHAMFER SHALL BE USED ON ALL EXPOSED EDGES OF THE RETAINING WALL.
4. ON VARIABLE HEIGHT WALLS THE TOP BAR SHALL BE PLACED PARALLEL TO THE TOP OF THE WALL
5. ALL STEEL SHALL BE PLACED 2" FROM THE BACK AND BOTTOM OF THE RETAINING WALL AND SLAB.
6. ALL STEEL SHALL BE OVERLAPPED 15" AT EACH SPLICE.

CITY OF RAPID CITY

PUBLIC WORKS DEPARTMENT

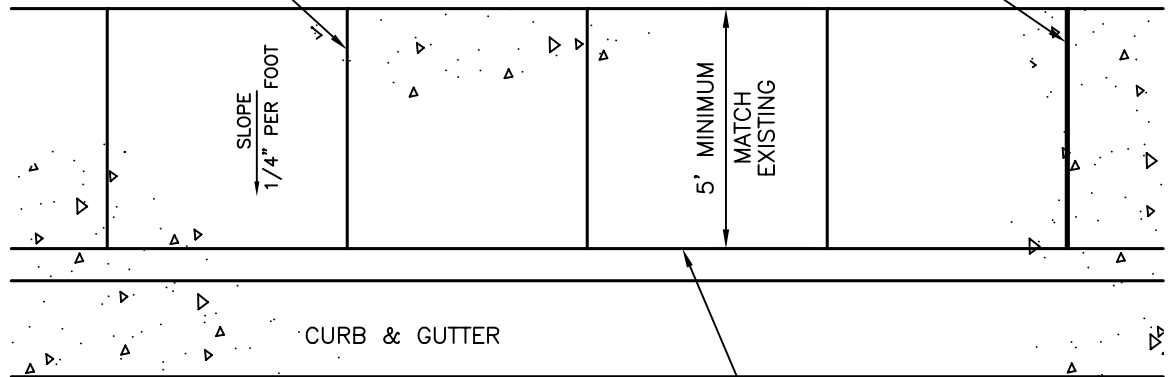
TYPE "C"
RETAINING WALLS

DATE: 5-1-07

SEC. SHT.
61-1a

TOOLED JOINT SPACED TO
MATCH SIDEWALK WIDTH ±
MATCH CURB & GUTTER
JOINT WHERE POSSIBLE

EXPANSION JOINT
SPACED 100' MAX.

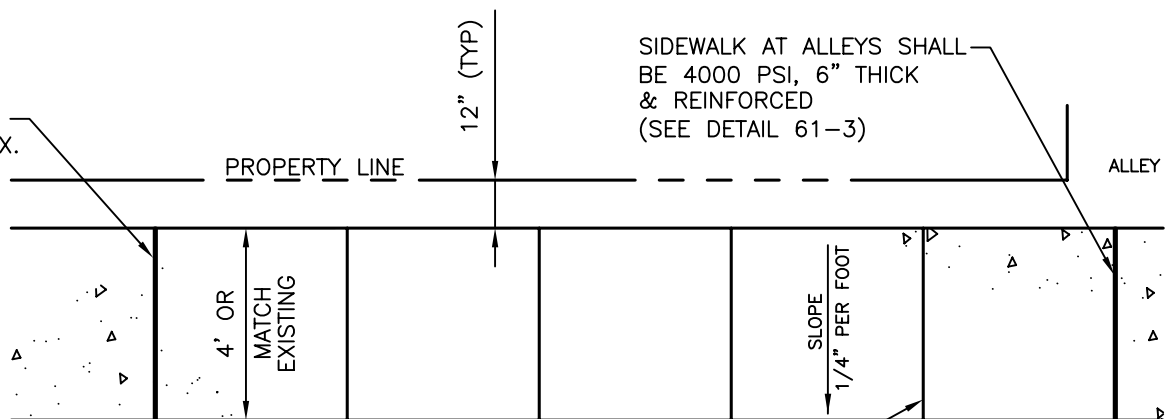


CURBSIDE SIDEWALK

TOOLED JOINT W/HOT-POURED
ELASTIC SEALER OR APPROVED
EQUAL

ALL SIDEWALKS SHALL BE A MINIMUM OF 4" THICK 4000 PSI CONCRETE
WITH A MINIMUM OF 2" OF COMPACTED CUSHION MATERIAL PLACED UNDER
THE SIDEWALK

EXPANSION JOINT
SPACED 100' MAX.



SIDEWALK AT ALLEYS SHALL
BE 4000 PSI, 6" THICK
& REINFORCED
(SEE DETAIL 61-3)

TOOLED JOINT SPACED TO
MATCH SIDEWALK WIDTH

PROPERTY LINE SIDEWALK

CITY OF RAPID CITY

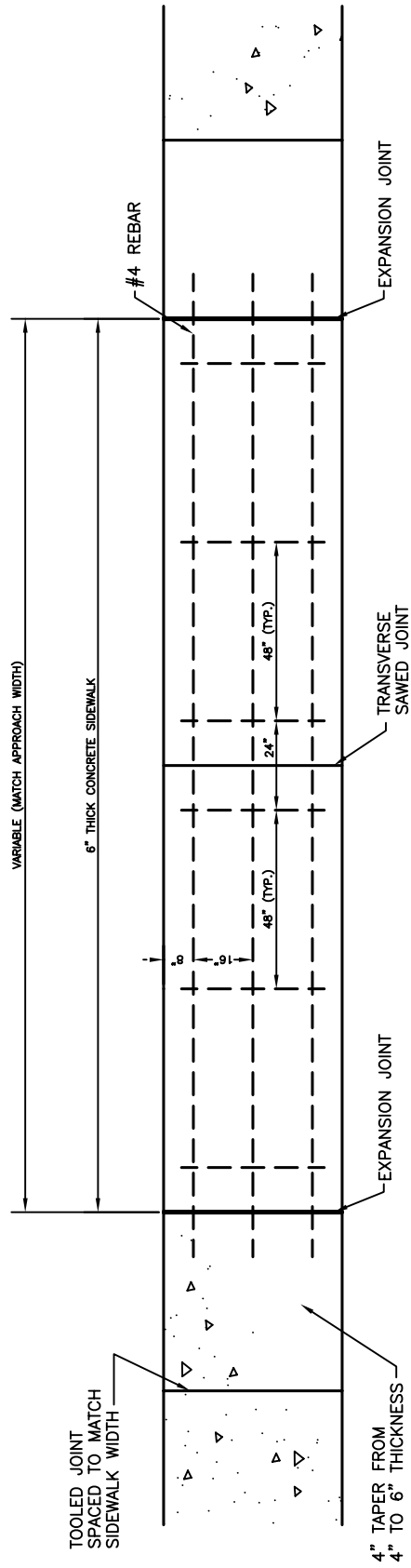
PUBLIC WORKS DEPARTMENT

SIDEWALKS

DATE: 5-1-07

SEC. SHT.

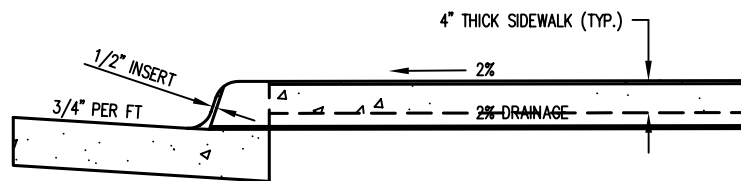
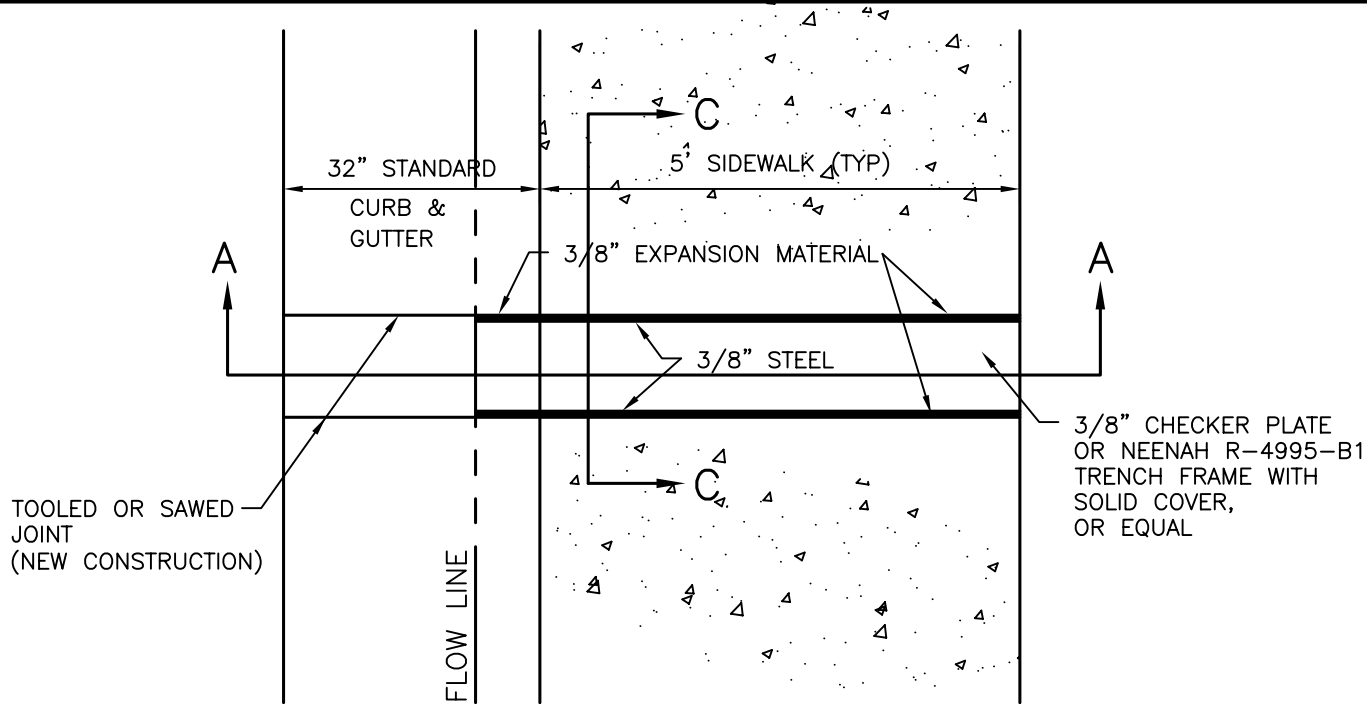
61-2



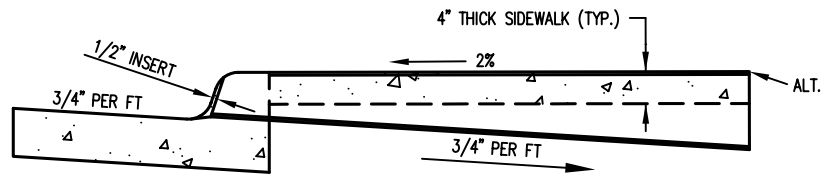
6" REINFORCED SIDEWALK

REINFORCED SIDEWALK SHALL BE PLACED AT ALL ENTRANCES INTO ALLEYS, PARKING LOTS, AND PROPERTY WHICH IS ZONED COMMERCIAL, LIGHT INDUSTRIAL & HEAVY INDUSTRIAL. #4 EPOXY COATED REBAR SHALL BE PLACED AS PER DETAIL AND TIED TOGETHER. TWO INCH (2") CLEARANCE SHALL BE MAINTAINED BETWEEN BOTTOM OF CONCRETE & REBAR. MINIMUM DEPTH OF GRANULAR MATERIAL PLACED UNDER REINFORCED SIDEWALK SHALL BE 4".

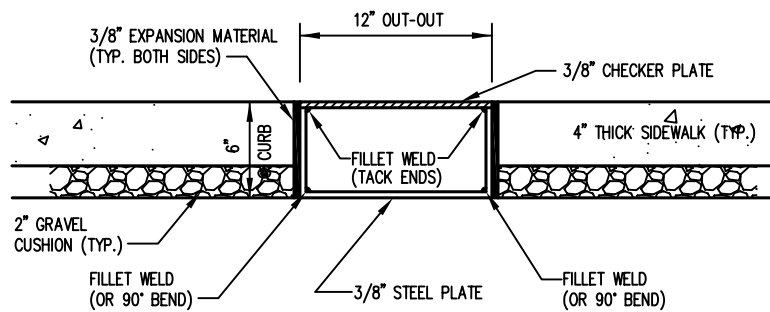
CITY OF RAPID CITY	PUBLIC WORKS DEPARTMENT	
REINFORCED SIDEWALKS (MULTI-FAMILY, ALLEY ENTR., INDUSTRIAL & COMMERCIAL APPLICATIONS)	DATE: 5-1-07	
	SEC. 61	SHT. 3



SECTION A-A - DRAINAGE INTO GUTTER



SECTION A-A - DRAINAGE FROM GUTTER TO DESIGNATED DISCHARGE LOCATION



SECTION C-C

CITY OF RAPID CITY

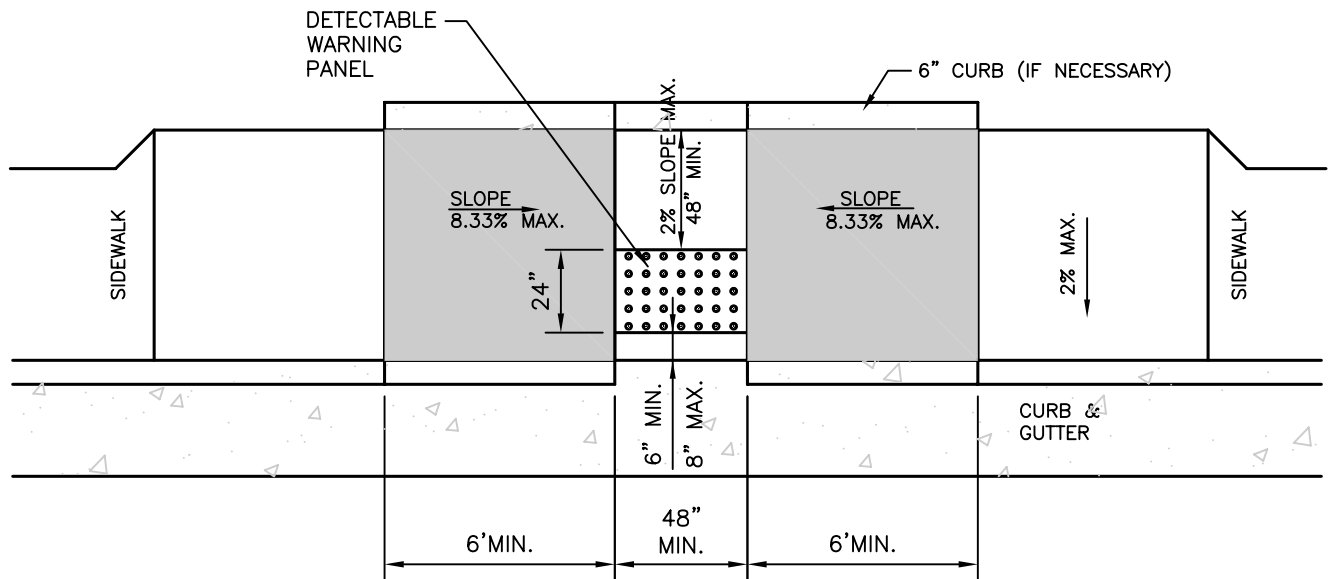
PUBLIC WORKS DEPARTMENT

**SIDEWALK GUTTER DRAINS
(CURB SIDE SIDEWALK)**

DATE: 5-1-07

SEC. SHT.

61-4



CURB SIDEWALK RAMP

GENERAL NOTES:

SURFACE TEXTURE OF THE RAMP SHALL BE OBTAINED BY A COARSE BROOMING PERPENDICULAR TO THE SLOPE OF THE RAMP.

DETECTABLE WARNING PANEL SHALL BE PER SPECIFICATIONS.

CARE SHALL BE TAKEN TO ASSURE A UNIFORM GRADE ON THE RAMP, FREE OF SAGS AND SHORT GRADE CHANGES.

THE NORMAL GUTTER LINE PROFILE SHALL BE MAINTAINED THROUGH THE AREA OF THE RAMP OPENING.

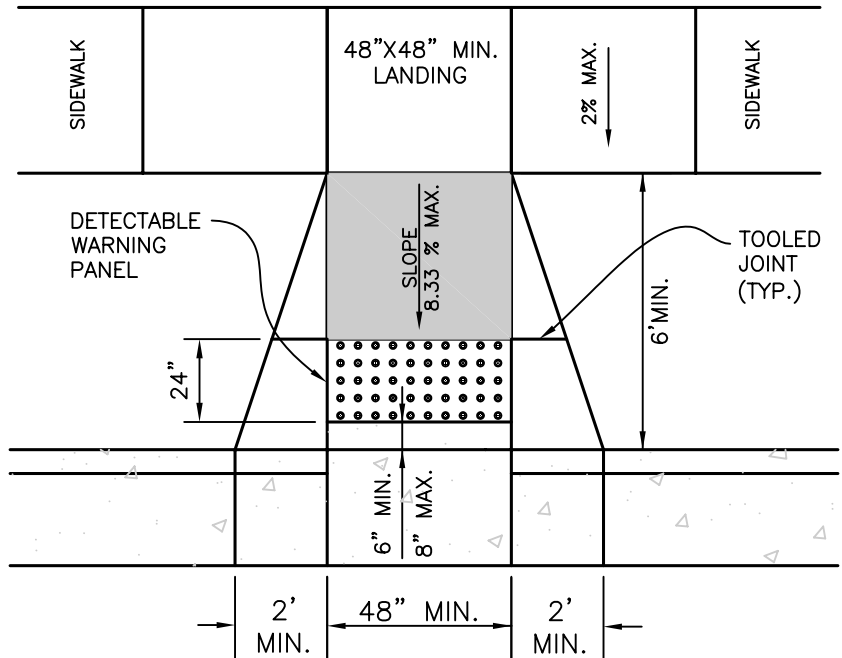
CROSS SLOPES SHALL NOT EXCEED 2%.

WHEN REMOVING EXISTING CURB AND GUTTER FOR NEW RAMP CONSTRUCTION AN EXPANSION JOINT SHALL BE CONSTRUCTED PER DETAIL 60-7.

ALL RAMPS ARE REQUIRED TO HAVE A MAXIMUM 48 INCH BY 48 INCH LANDING AREA WITH NO MORE THAN A 2% SLOPE IN ANY DIRECTION.

ALL RAMPS SHALL HAVE A MAXIMUM RUNNING SLOPE OF 8.33% (1 INCH PER FT.).

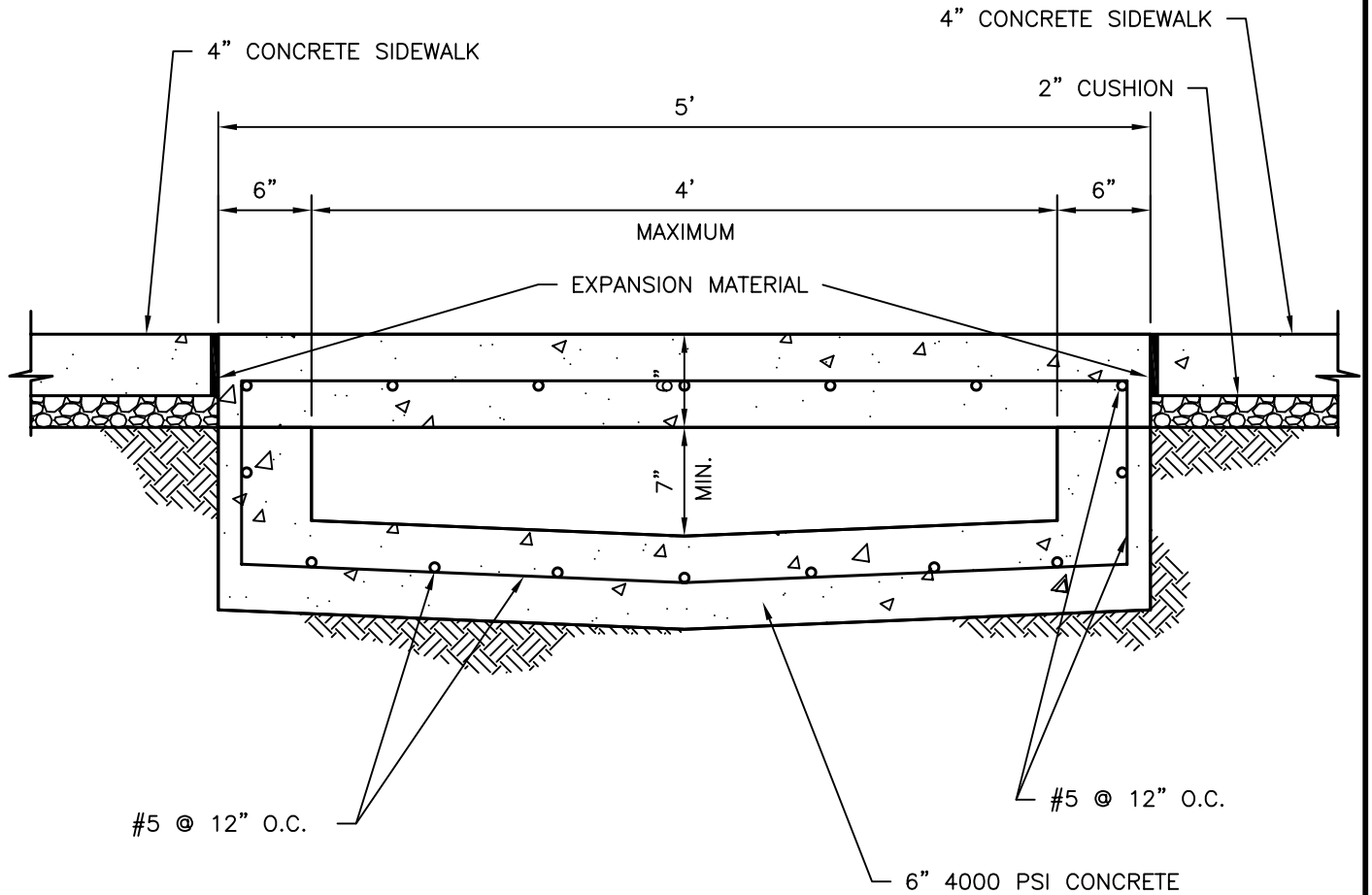
OBSTRUCTIONS SUCH AS SIGNAL POLES, LIGHT POLES, TRAFFIC CONTROLLER CABINETS, ETC. CAN NOT BE LOCATED IN THE LANDING AREA OR THE RAMP SLOPE.



PROPERTY LINE SIDEWALK RAMP

ENSURE THE SURFACE OF THE DETECTABLE WARNING PANEL IS CLEAN AND FREE OF RESIDUE.

JOINTS SHALL BE TOOLED INTO THE CONCRETE ADJACENT TO THE DETECTABLE WARNING PANELS TO ALLEVIATE POSSIBLE CORNER CRACKING.



CITY OF RAPID CITY

PUBLIC WORKS DEPARTMENT

CONCRETE DRAINAGE
CHANNEL SECTION

DATE: 5-1-07

SEC. SHT.

61-6