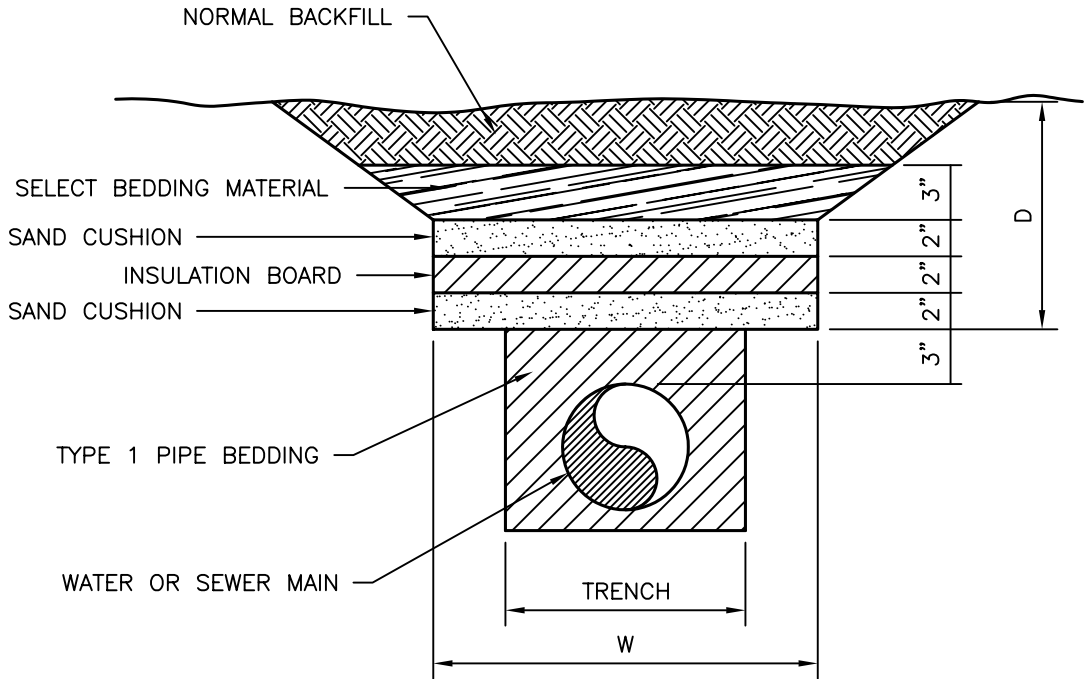


PLAN

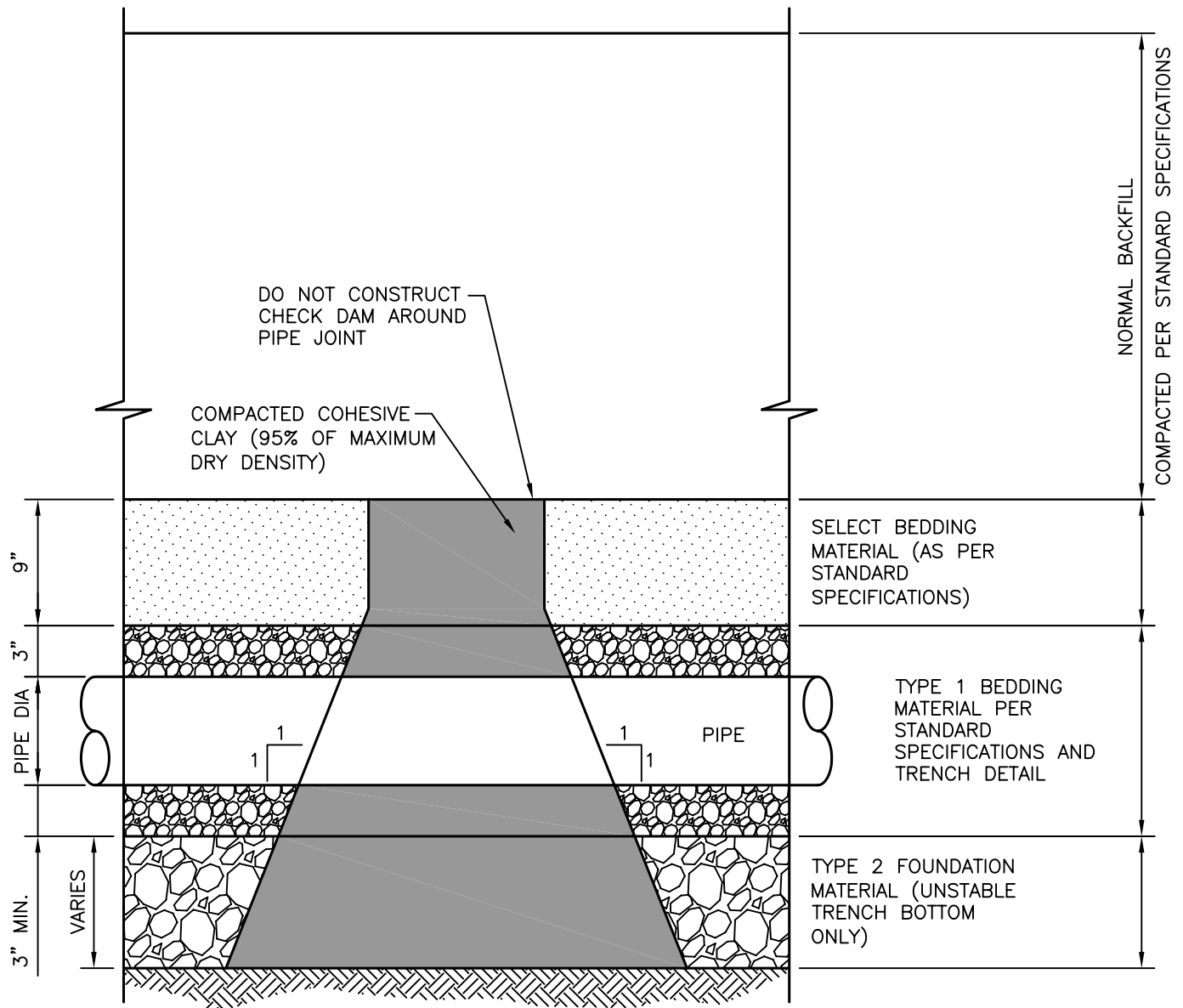


SECTION A-A

INSULATION WIDTH VS. PIPE DEPTH

WATER		SEWER	
D (FEET)	W (FEET)	D (FEET)	W (FEET)
3	8	2.5	8
4	6	3	6
5	4	3.5	4

* THE USE OF INSULATION REQUIRES PRIOR APPROVAL BY THE ENGINEER.

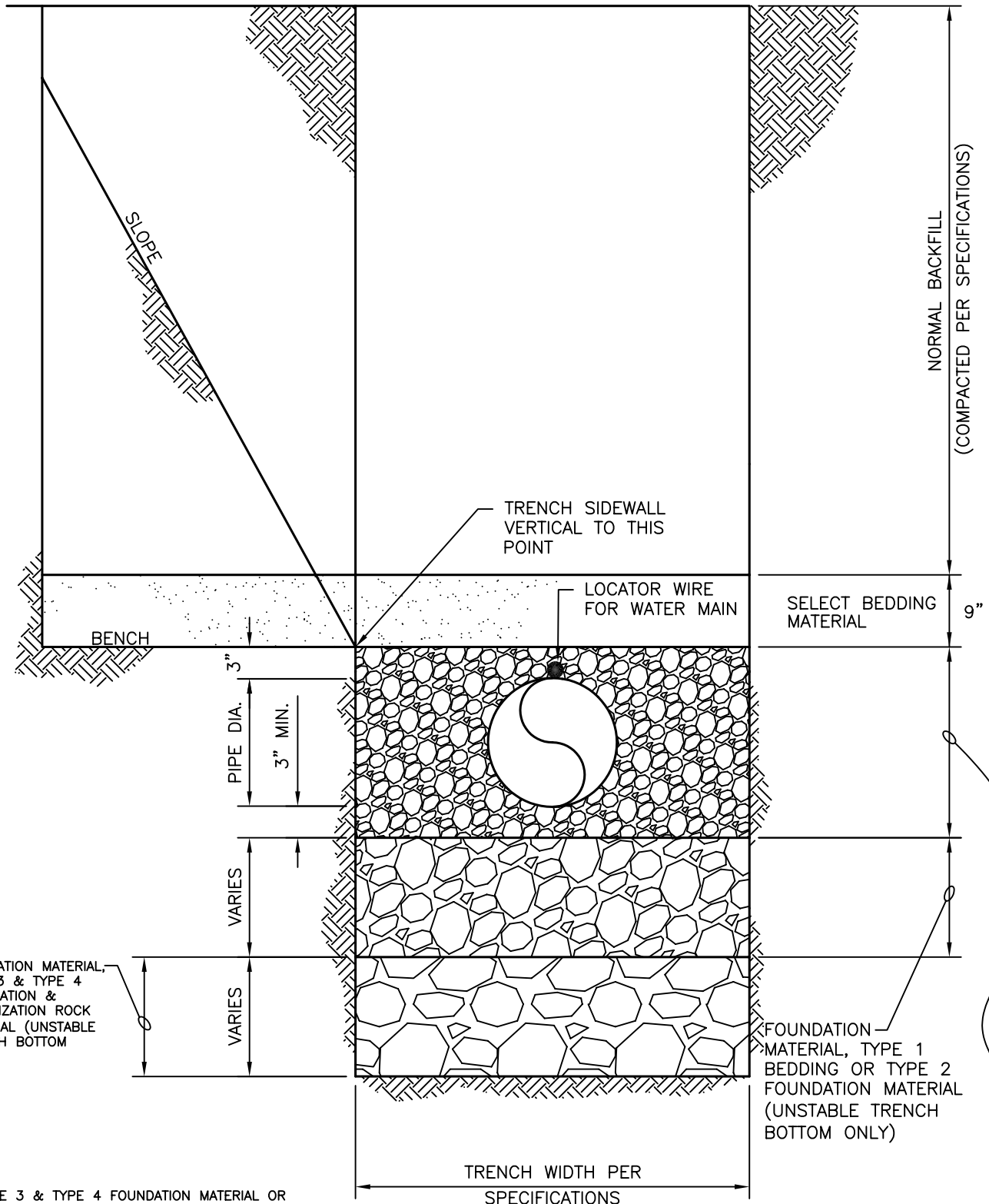


ELEVATION

NOTE:

CHECK DAM INSTALLATION LOCATIONS SHALL BE AS INDICATED ON THE PLANS. HOWEVER DURING CONSTRUCTION, CHECK DAM INSTALLATION LOCATIONS MAY BE MOVED DUE TO FIELD CONDITIONS.

THE CHECK DAM SHALL EXTEND FROM THE BOTTOM OF THE EXCAVATION THROUGH THE BEDDING MATERIAL TO THE "NORMAL BACKFILL" AND SHALL EXTEND COMPLETELY TO EACH TRENCH SIDEWALL. CHECK DAM MATERIAL SHALL BE COMPACTED COHESIVE CLAY THAT CONTAINS A MINIMUM OF 25% MINUS NO. 200 SIEVE MATERIAL, WITH 70% PASSING A 3/4 INCH SIEVE. IF THE NORMAL EXCAVATED MATERIAL IS NOT SUITABLE FOR CONSTRUCTION OF THE CHECK DAM, THEN THE CONTRACTOR SHALL OBTAIN MATERIAL FROM OUTSIDE SOURCES. CHECK DAM INSTALLATION AND MATERIAL SHALL BE CONSIDERED AS INCIDENTAL TO THE PIPE INSTALLATION.



* FOUNDATION MATERIAL, TYPE 3 & TYPE 4 FOUNDATION & STABILIZATION ROCK MATERIAL (UNSTABLE TRENCH BOTTOM ONLY)

* IF TYPE 3 & TYPE 4 FOUNDATION MATERIAL OR STABILIZATION ROCK MATERIAL IS USED FOR UNSTABLE TRENCH BOTTOM, THEN A MINIMUM 6" THICK LAYER OF TYPE 2 FOUNDATION MATERIAL SHALL BE PLACED ABOVE THE TYPE 3 & TYPE 4 MATERIAL & PRIOR TO THE TYPE 1 BEDDING MATERIAL.

TYPE 1 BEDDING MATERIAL

CITY OF RAPID CITY

PUBLIC WORKS DEPARTMENT

TRENCH DETAIL FOR WATER & SEWER MAIN

DATE: 5-1-07

SEC. SHT.

11-3