



DOWNTOWN • 610 Quincy St. Rapid City, SD 57701 • (605) 394-6139 or (605) 394-4171
NORTH • 10 Van Buren St. Rapid City, SD 57701 • (605) 716-4098

Date: April 11, 2016
To: Rapid City Public Libraries Board of Trustees
From: Kimberly Beck, Administrative and Facilities Coordinator
Re: Monthly Financial Executive Summary
Period Ending March 31, 2016

Rapid City Public Libraries' year to date fines and fees revenues, as reflected in [Figure 1](#), totaled \$15,545. This is a decrease of 23% compared to the previous year (2015).

1. Revenue from non-resident cards – A increase in revenue of 3% compared to last year. We currently have 499 non-county users registered.
2. Revenue from copies – There is an increase of 10% for copies this year compared to last year.
3. Revenue from fines – Decreased 34% from this point last year for a difference of \$4,094.
4. Revenue from meeting room fees – Decreased \$30 from this time last year.
5. Revenue from 3D prints and proctoring – Revenue for these two items are \$330 and \$25 respectfully.

Total expenditures and encumbrances¹ through February were \$886,155 as reflected in [Figure 2](#). With a budget established at \$3.8 million, approximately 23% was expended as of the end of March. (See [Table 1](#))

1. Salary, Wages and Benefits - Actual expenditures at the end of March 2016 for Salaries, Wages and Benefits totaled \$490,191. This is 3% lower than last year at this time.
2. Insurance – Expenses in these line items decreased by \$2,371 under the previous year. Actual expenditures in this line item are \$22,684.
3. Professional service expenditures – Increased 31% as compared to the prior year. Expenditures in this line item include facility maintenance services (i.e. window cleaning, HVAC maintenance and pest control), and security services. Security services were added towards the end of last year at the North Library.
4. Rentals – Increased \$3,499 since this time last year. Rentals include our costs for leased parking as well as equipment rentals and leased equipment. Our contract costs for copiers have increased over last year by about 3%, plus some costs from last year were carried over to this year's budget.

¹ Encumbrances: Obligations in the form of purchase orders, contracts or salary commitments which are chargeable to an appropriation and for which a part of the appropriation is reserved. Obligations cease to be encumbrances when paid or when the actual liability is set up.



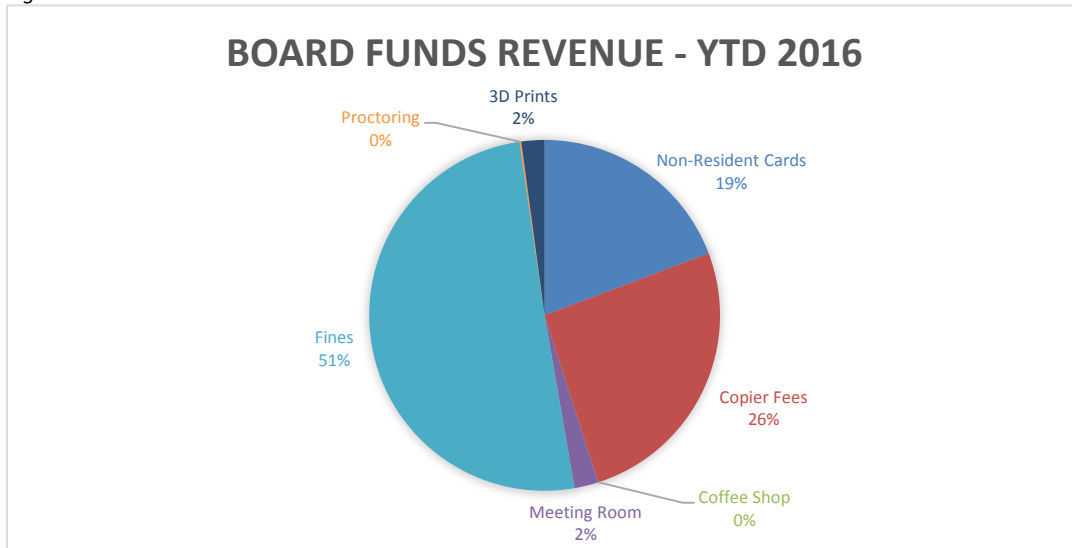
EQUAL OPPORTUNITY EMPLOYER

5. Repair & maintenance – Decreased 41% compared to the previous year. This line item is for repair costs of both the downtown facility (structure) and equipment, as well as the Integrated Library System. The new ILS, KOHA, is less cost than our previous Millenium service.
6. Supplies & materials – Decreased 18% since this time in 2015. Purchases include office supplies, gasoline, facilities uniforms, janitorial supplies, tools, tires, and facility equipment. These purchases are made according to the replacement schedule.
7. Travel & Training – Total expenditures in this line item are \$3,475. Conferences and trainings are scheduled according to the travel and training plan.
8. Utilities – Increased 12% or \$3,520 compared to expenditures for this time last year. Utilities include telephone, internet, natural gas and electricity. The library is experiencing lower costs in electricity due to our energy saving initiatives, including the switching of monitoring of the HVAC to the Energy Plant. However, we have increased our bandwidth, which accounts for the higher costs in this line.
9. Miscellaneous – Decreased 7% under 2015. Expenditures out of this line item include subscriptions to periodicals for patron browsing, programming materials, computers and software and office equipment and these are made according to the technology and equipment replacement schedule. This is an authorized line item name, and planned expenditures that don't fit in any other line item go here.
10. Capital Outlay – Increased 11% as compared to last year. This line item includes planned purchases for books and other library materials, as well as building improvements and vehicles.
11. Other expenses – Increased 165%, or \$3,169 over last year. This is a pass-thru line item for the Friends of the Library Book Sale area and does not affect the bottom line. The Friends of the Library Book Shop will now be open all hours the Library is open.



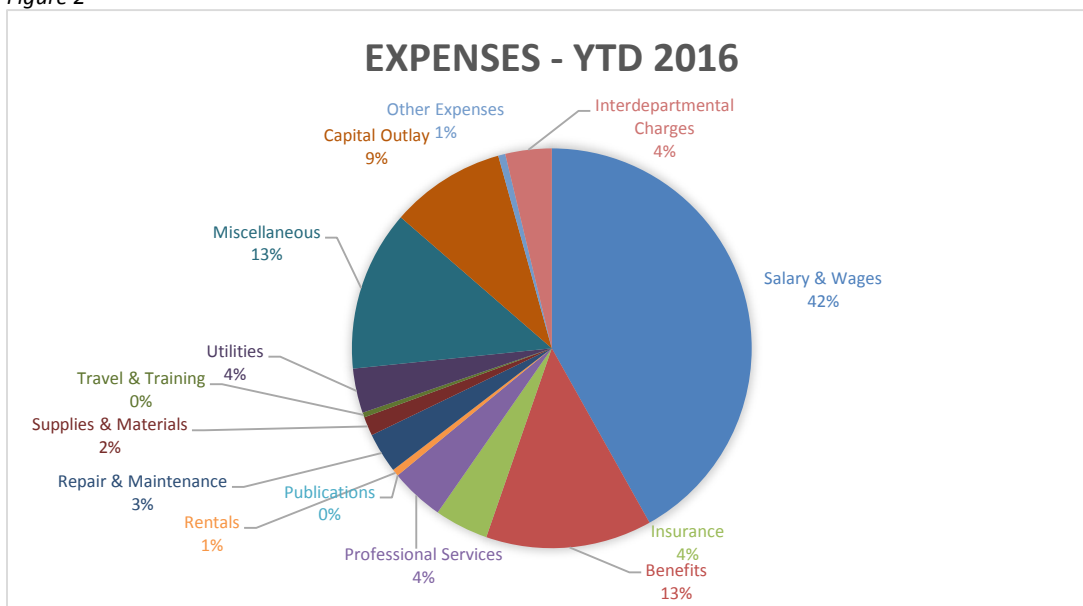
EQUAL OPPORTUNITY EMPLOYER

Figure 1



Total Revenues: \$15,545

Figure 2



Total Expenditures: \$886,155



EQUAL OPPORTUNITY EMPLOYER

Table 1

YTD Expense Comparison				
as of 3/31/16				
	YTD '15	YTD '16	More or (Less) than 2014	% +/-
Salary & Wages	440,644	371,020	(69,624)	-16%
Benefits	62,651	119,171	56,520	90%
Insurance	25,055	22,684	(2,371)	-9%
Professional Services	29,548	38,582	9,034	31%
Rentals	1,532	5,031	3,499	228%
Repair & Maintenance	48,922	28,865	(20,057)	-41%
Supplies & Materials	16,609	13,626	(2,983)	-18%
Travel & Training	4,098	3,475	(623)	-15%
Utilities	28,365	31,885	3,520	12%
Miscellaneous	123,403	115,135	(8,268)	-7%
Capital Outlay	74,063	82,501	8,438	11%
Other Expenses	1,924	5,093	3,169	165%

Table 2

Monthly Vacancy Status Report			
as of 3/31/16			
LIBRARY DEPARTMENT	FULL AND PART-TIME POSITIONS	FULL AND PART-TIME EMPLOYEES	VACANCIES
Management	2	2	-
Librarian Is	3	3	-
Managers	1	-	1
Coordinators	3	2	1
Business Office	2	2	-
Facilities	3	3	-
Library Associates	22	21	1
Customer Service Associates	6	6	-
Outreach	4	4	-
TOTALS	46	43	3
<i>NOTE: Data excludes temporary classifications.</i>			



EQUAL OPPORTUNITY EMPLOYER

Year to Date Expense Report
as of 03/31/16

Dept. 0609, 0610, 0971

	Total Year To			
	Date			
	Current Year Working Budget	Encumbrance and Expense	Remaining Budget Balance	Percent Budget Remaining
4110 Salary & Wages	\$ 1,612,986	\$ 363,484	\$ 1,249,502	77%
4111 Overtime Wages	-	439	(439)	0%
4118 Temporary Wages	31,481	7,097	24,384	77%
4100 Salary & Wages	1,644,467	371,020	1,273,447	77%
4120 Social Security	101,610	21,876	79,734	78%
4121 Medicare	23,763	5,116	18,647	78%
4130 Retirement	96,443	32,318	64,125	66%
4131 Section 125 Administration	1,110	110	1,000	90%
4140 Workmens Comp	3,475	3,054	421	12%
4150 Group Health Insurance	194,564	56,274	138,290	71%
4155 Group Life Insurance	1,803	423	1,380	77%
4170 Unemployment Insurance	1,599	-	1,599	100%
4110 Benefits	424,367	119,171	305,196	72%
4211 General & Auto Liability	6,864	4,552	2,312	34%
4212 Boiler Coverage	1,506	-	1,506	100%
4214 Other Insurance	22,660	18,132	4,528	20%
4210 Insurance	31,030	22,684	8,346	27%
4223 Consultant Services	21,260	-	21,260	100%
4225 Other Professional Services	113,602	38,582	75,020	66%
4229 Marketing	1,135	-	1,135	0%
4220 Professional Services	135,997	38,582	97,415	72%
4230 Publishing	1,026	-	1,026	100%
4230 Publications	1,026	-	1,026	100%
4243 Machinery Rentals	4,189	-	4,189	100%
4244 Lease/Purchases	14,250	4,359	9,891	69%
4246 Other Rentals	3,581	672	2,909	81%
4240 Rentals	22,020	5,031	16,989	77%
4251 Repair - Roll Stock	1,571	90	1,481	94%
4252 Repair - Structures	43,797	3,226	40,571	93%
4253 Repair - Equipment	28,852	3,382	25,470	88%
4255 Repair - Water & Sewer	641	-	641	100%
4259 Miscellaneous	92,224	22,167	70,057	76%
4250 Repair & Maintenance	167,085	28,865	138,220	83%
4261 Office Supplies	42,210	9,283	32,927	78%
4262 Gasoline, Oil, Fuel	2,584	369	2,215	86%
4263 Clothing, Food	1,514	397	1,117	74%
4264 Janitor & Chemical Supplies	25,901	3,510	22,391	86%
4265 Minor Tools	4,200	47	4,153	99%
4266 Agricultural Supply	-	-	-	0%
4267 Tires	800	-	800	100%
4269 Misc Supplies & Materials	-	20	(20)	0%
4260 Supplies & Materials	77,209	13,626	63,583	82%
4270 Travel & Training	22,310	3,475	18,835	84%
4270 Travel & Training	22,310	3,475	18,835	84%
4281 Telephone - Local	46,440	6,237	40,203	87%
4282 Natural Gas	18,053	6,976	11,077	61%
4283 Electricity	106,206	18,672	87,534	82%
4280 Utilities	170,699	31,885	138,814	81%
4292 Dues	2,501	740	1,761	70%
4293 Subscriptions	92,338	76,258	16,080	17%
4294 Other Miscellaneous Expenses	25,696	5,831	19,865	77%
4295 Computers & Software	176,860	26,841	150,019	85%
4296 Office Equipment	33,727	5,465	28,262	84%
4290 Miscellaneous	331,122	115,135	215,987	65%
4320 Buildings & Structures	94,735	-	94,735	100%
4341 General Materials	165,460	38,311	127,149	77%
4342 Books/AV Processing	19,124	4,670	14,454	76%
4345 Electronic Resources	138,946	29,292	109,654	79%
4346 DVDs	34,901	8,499	26,402	76%
4348 Interactive Materials	-	1,729	(1,729)	0%
4350 Furniture & Minor Equipment	45,700	-	45,700	100%
4390 Vehicles	125,000	-	125,000	100%
4300 Capital Outlay	623,866	82,501	541,365	6
4530 Refund or Reimbursement	17,046	5,093	11,953	70%
4500 Other Expenses	17,046	5,093	11,953	70%
*SUB-TOTAL	3,668,244	837,068	2,831,176	77%
4226 Interdepartmental Charges	139,841	33,189	106,652	76%
4226 Interdepartmental Charges	139,841	33,189	106,652	76%
*SUB-TOTAL	3,808,085	870,257	2,937,828	77%
**Total LIBRARY	\$ 3,808,085	\$ 870,257	\$ 2,937,828	77%

The City of Rapid City
Bill List by Vendor - Detail

Vendor #	Invoice #	PO #	Vendor Name	GL Account	Line Item Description	Line Item Amount
170	100961297201	31765	AMAZON.COM CREDIT	10100609-434100	GENERAL MATERIALS	150.56
	080223678873	31527	AMAZON.COM CREDIT	10100609-434100	GENERAL MATERIALS	40.69
	080220072602	31527	AMAZON.COM CREDIT	10100609-434100	GENERAL MATERIALS	19.19
	100962493640	29214	AMAZON.COM CREDIT	10100610-434100	GENERAL MATERIALS	112.94
	192023057704	29213	AMAZON.COM CREDIT	10100610-434100	GENERAL MATERIALS	16.73
	151039674929	29216	AMAZON.COM CREDIT	10100610-434100	GENERAL MATERIALS	60.35
	297251106431	29211	AMAZON.COM CREDIT	10100610-434100	GENERAL MATERIALS	11.09
	210418058495	29212	AMAZON.COM CREDIT	10100610-434100	GENERAL MATERIALS	18.95
	151038111035	29216	AMAZON.COM CREDIT	10100610-434100	GENERAL MATERIALS	18.43
	210859718466	29210	AMAZON.COM CREDIT	10100610-434100	GENERAL MATERIALS	4.97
	151032683543	29216	AMAZON.COM CREDIT	10100610-434100	GENERAL MATERIALS	23.72
	239210150148	29215	AMAZON.COM CREDIT	10100610-434100	GENERAL MATERIALS	15.93
	151035507314	29216	AMAZON.COM CREDIT	10100610-434100	GENERAL MATERIALS	27.92
	239210336692	29215	AMAZON.COM CREDIT	10100610-434100	GENERAL MATERIALS	18.98
	289701361615	29219	AMAZON.COM CREDIT	10100610-434100	GENERAL MATERIALS	11.73
	280085478057	29269	AMAZON.COM CREDIT	10100609-434100	GENERAL MATERIALS	18.97

170	178437816656	29272	AMAZON.COM CREDIT	10100609-434100	GENERAL MATERIALS	9.99
	130912090068	29270	AMAZON.COM CREDIT	10100609-434100	GENERAL MATERIALS	13.95
	204603076377	29271	AMAZON.COM CREDIT	10100609-434100	GENERAL MATERIALS	16.49
	102571522197	31193	AMAZON.COM CREDIT	10100609-434100	GENERAL MATERIALS	17.49
	211027560117	31227	AMAZON.COM CREDIT	10100609-434100	GENERAL MATERIALS	29.09
	070449782875	31396	AMAZON.COM CREDIT	10100609-434100	GENERAL MATERIALS	37.90
	211023646786	31227	AMAZON.COM CREDIT	10100609-434100	GENERAL MATERIALS	75.46
	077663923713	31243	AMAZON.COM CREDIT	10100609-434100	GENERAL MATERIALS	6.99
	070446842828	31396	AMAZON.COM CREDIT	10100609-434100	GENERAL MATERIALS	54.27
	070445888821	31396	AMAZON.COM CREDIT	10100609-434100	GENERAL MATERIALS	53.98
	253811371910	31194	AMAZON.COM CREDIT	10100609-434100	GENERAL MATERIALS	22.51
	157314664176	31244	AMAZON.COM CREDIT	10100609-434100	GENERAL MATERIALS	15.15
	226611884474	31192	AMAZON.COM CREDIT	10100609-434100	GENERAL MATERIALS	16.56
	164282746430	31394	AMAZON.COM CREDIT	10100609-434100	GENERAL MATERIALS	20.55
	226611691478	31192	AMAZON.COM CREDIT	10100609-434100	GENERAL MATERIALS	75.80
	164285661866	31394	AMAZON.COM CREDIT	10100609-434100	GENERAL MATERIALS	9.31
	223654025467	31395	AMAZON.COM CREDIT	10100609-434100	GENERAL MATERIALS	44.05
	253813948313	31194	AMAZON.COM CREDIT	10100609-434100	GENERAL MATERIALS	29.03
	134981386859	31191	AMAZON.COM CREDIT	10100609-434100	GENERAL MATERIALS	8.97

170	121291579990	31245	AMAZON.COM CREDIT	10100609-434100	GENERAL MATERIALS	27.77
	082605181544	29222	AMAZON.COM CREDIT	10100610-434100	GENERAL MATERIALS	10.22
	222561051968	29223	AMAZON.COM CREDIT	10100610-434100	GENERAL MATERIALS	5.97
	106098533724	29221	AMAZON.COM CREDIT	10100610-434100	GENERAL MATERIALS	6.30
	180222110672	29218	AMAZON.COM CREDIT	10100610-434100	GENERAL MATERIALS	7.98
	081325586442	29220	AMAZON.COM CREDIT	10100610-434100	GENERAL MATERIALS	27.72
	064109698450	29225	AMAZON.COM CREDIT	10100610-434100	GENERAL MATERIALS	17.90
	056221636130	29217	AMAZON.COM CREDIT	10100610-434100	GENERAL MATERIALS	19.93
	253813398914	31194	AMAZON.COM CREDIT	10100609-434100	GENERAL MATERIALS	9.64
	253810734170	31194	AMAZON.COM CREDIT	10100609-434100	GENERAL MATERIALS	30.95
	289700876321	29219	AMAZON.COM CREDIT	10100610-434100	GENERAL MATERIALS	13.10
	082999177740	31393	AMAZON.COM CREDIT	10100609-434100	GENERAL MATERIALS	34.64
	038705990687	31866	AMAZON.COM CREDIT	10100609-434100	GENERAL MATERIALS	46.70
	030854892020	31857	AMAZON.COM CREDIT	10100609-434100	GENERAL MATERIALS	47.22
	015920469062	31865	AMAZON.COM CREDIT	10100609-434100	GENERAL MATERIALS	18.95
	054576516743	31854	AMAZON.COM CREDIT	10100609-434100	GENERAL MATERIALS	11.99
	015922016532	31865	AMAZON.COM CREDIT	10100609-434100	GENERAL MATERIALS	43.86
					AMAZON.COM CREDIT Total:	1,509.53
356	2031713545	32513	BAKER & TAYLOR BOOKS	10100610-434100	GENERAL MATERIALS	11.99
	2031713545	32513	BAKER & TAYLOR BOOKS	10100610-434200	GENERAL MATERIALS	0.40

356	2031713546	32514	BAKER & TAYLOR BOOKS	10100610-434100	GENERAL MATERIALS	14.55
	2031713546	32514	BAKER & TAYLOR BOOKS	10100610-434200	GENERAL MATERIALS	1.05
	2031713547	32512	BAKER & TAYLOR BOOKS	10100610-434100	GENERAL MATERIALS	34.54
	2031713547	32512	BAKER & TAYLOR BOOKS	10100610-434200	GENERAL MATERIALS	2.90
	2031713548	32515	BAKER & TAYLOR BOOKS	10100610-434100	GENERAL MATERIALS	13.25
	2031713548	32515	BAKER & TAYLOR BOOKS	10100610-434200	GENERAL MATERIALS	0.25
	2031713549	32516	BAKER & TAYLOR BOOKS	10100610-434100	GENERAL MATERIALS	43.64
	2031713549	32516	BAKER & TAYLOR BOOKS	10100610-434200	GENERAL MATERIALS	3.15
	2031713550	32511	BAKER & TAYLOR BOOKS	10100610-434100	GENERAL MATERIALS	70.24
	2031713550	32511	BAKER & TAYLOR BOOKS	10100610-434200	GENERAL MATERIALS	1.45
	2031713551	32510	BAKER & TAYLOR BOOKS	10100610-434100	GENERAL MATERIALS	391.90
	2031713551	32510	BAKER & TAYLOR BOOKS	10100610-434200	GENERAL MATERIALS	27.10
	2031713552	32509	BAKER & TAYLOR BOOKS	10100610-434100	GENERAL MATERIALS	22.06
	2031713552	32509	BAKER & TAYLOR BOOKS	10100610-434200	GENERAL MATERIALS	0.40
	2031717670	32508	BAKER & TAYLOR BOOKS	10100610-434100	GENERAL MATERIALS	10.19
	2031717670	32508	BAKER & TAYLOR BOOKS	10100610-434200	GENERAL MATERIALS	0.40
	2031717671	32504	BAKER & TAYLOR BOOKS	10100610-434100	GENERAL MATERIALS	26.36
	2031717671	32504	BAKER & TAYLOR BOOKS	10100610-434200	GENERAL MATERIALS	0.65
	2031717672	32505	BAKER & TAYLOR BOOKS	10100610-434100	GENERAL MATERIALS	20.55

356	2031717672	32505	BAKER & TAYLOR BOOKS	10100610-434200	GENERAL MATERIALS	1.30
	2031717673	32506	BAKER & TAYLOR BOOKS	10100610-434100	GENERAL MATERIALS	23.60
	2031717673	32506	BAKER & TAYLOR BOOKS	10100610-434200	GENERAL MATERIALS	1.45
	2031717674	32507	BAKER & TAYLOR BOOKS	10100610-434100	GENERAL MATERIALS	29.90
	2031717674	32507	BAKER & TAYLOR BOOKS	10100610-434200	GENERAL MATERIALS	0.25
	2031717675	32517	BAKER & TAYLOR BOOKS	10100610-434100	GENERAL MATERIALS	36.09
	2031717675	32517	BAKER & TAYLOR BOOKS	10100610-434200	GENERAL MATERIALS	0.40
	2031717676	32518	BAKER & TAYLOR BOOKS	10100610-434100	GENERAL MATERIALS	14.20
	2031717676	32518	BAKER & TAYLOR BOOKS	10100610-434200	GENERAL MATERIALS	1.05
	2031717677	32549	BAKER & TAYLOR BOOKS	10100610-434100	GENERAL MATERIALS	275.73
	2031717677	32549	BAKER & TAYLOR BOOKS	10100610-434200	GENERAL MATERIALS	23.25
	2031717699	32548	BAKER & TAYLOR BOOKS	10100610-434100	GENERAL MATERIALS	40.29
	2031717699	32548	BAKER & TAYLOR BOOKS	10100610-434200	GENERAL MATERIALS	3.00
	2031717700	32550	BAKER & TAYLOR BOOKS	10100610-434100	GENERAL MATERIALS	14.55
	2031717700	32550	BAKER & TAYLOR BOOKS	10100610-434200	GENERAL MATERIALS	1.05
	2031717701	32551	BAKER & TAYLOR BOOKS	10100610-434100	GENERAL MATERIALS	24.10
	2031717701	32551	BAKER & TAYLOR BOOKS	10100610-434200	GENERAL MATERIALS	1.45
	2031717702	32552	BAKER & TAYLOR BOOKS	10100610-434100	GENERAL MATERIALS	32.29
	2031717702	32552	BAKER & TAYLOR BOOKS	10100610-434200	GENERAL MATERIALS	0.40

356	2031717703	32553	BAKER & TAYLOR BOOKS	10100610-434100	GENERAL MATERIALS	63.86
	2031717703	32553	BAKER & TAYLOR BOOKS	10100610-434200	GENERAL MATERIALS	2.65
	2031717704	32554	BAKER & TAYLOR BOOKS	10100610-434100	GENERAL MATERIALS	122.30
	2031717704	32554	BAKER & TAYLOR BOOKS	10100610-434200	GENERAL MATERIALS	5.15
	2031726867	32555	BAKER & TAYLOR BOOKS	10100610-434100	GENERAL MATERIALS	14.24
	2031726867	32555	BAKER & TAYLOR BOOKS	10100610-434200	GENERAL MATERIALS	0.25
	2031726868	32557	BAKER & TAYLOR BOOKS	10100610-434100	GENERAL MATERIALS	62.38
	2031726868	32557	BAKER & TAYLOR BOOKS	10100610-434200	GENERAL MATERIALS	2.00
	2031726869	32558	BAKER & TAYLOR BOOKS	10100610-434100	GENERAL MATERIALS	5.99
	2031726869	32558	BAKER & TAYLOR BOOKS	10100610-434200	GENERAL MATERIALS	0.25
	2031726870	32559	BAKER & TAYLOR BOOKS	10100610-434100	GENERAL MATERIALS	16.24
	2031726870	32559	BAKER & TAYLOR BOOKS	10100610-434200	GENERAL MATERIALS	1.05
	2031726871	32560	BAKER & TAYLOR BOOKS	10100610-434100	GENERAL MATERIALS	248.33
	2031726871	32560	BAKER & TAYLOR BOOKS	10100610-434200	GENERAL MATERIALS	16.75
	2031726872	32698	BAKER & TAYLOR BOOKS	10100610-434100	GENERAL MATERIALS	14.25
	2031726872	32698	BAKER & TAYLOR BOOKS	10100610-434200	GENERAL MATERIALS	0.40
	2031726873	32699	BAKER & TAYLOR BOOKS	10100610-434100	GENERAL MATERIALS	10.63
	2031726873	32699	BAKER & TAYLOR BOOKS	10100610-434200	GENERAL MATERIALS	0.90
	2031726874	32700	BAKER & TAYLOR BOOKS	10100610-434100	GENERAL MATERIALS	21.03

356	2031726874	32700	BAKER & TAYLOR BOOKS	10100610-434200	GENERAL MATERIALS	1.45
	2031726875	32701	BAKER & TAYLOR BOOKS	10100610-434100	GENERAL MATERIALS	243.35
	2031726875	32701	BAKER & TAYLOR BOOKS	10100610-434200	GENERAL MATERIALS	18.40
	2031726876	32704	BAKER & TAYLOR BOOKS	10100610-434100	GENERAL MATERIALS	20.24
	2031726876	32704	BAKER & TAYLOR BOOKS	10100610-434200	GENERAL MATERIALS	0.80
	2031735904	32702	BAKER & TAYLOR BOOKS	10100610-434100	GENERAL MATERIALS	56.08
	2031735904	32702	BAKER & TAYLOR BOOKS	10100610-434200	GENERAL MATERIALS	3.40
	2031735905	32703	BAKER & TAYLOR BOOKS	10100610-434100	GENERAL MATERIALS	31.22
	2031735905	32703	BAKER & TAYLOR BOOKS	10100610-434200	GENERAL MATERIALS	1.45
	2031735906	32705	BAKER & TAYLOR BOOKS	10100610-434100	GENERAL MATERIALS	59.17
	2031735906	32705	BAKER & TAYLOR BOOKS	10100610-434200	GENERAL MATERIALS	3.80
	2031735908	32708	BAKER & TAYLOR BOOKS	10100609-434100	GENERAL MATERIALS	28.76
	2031735908	32708	BAKER & TAYLOR BOOKS	10100609-434200	GENERAL MATERIALS	0.25
	2031735909	32706	BAKER & TAYLOR BOOKS	10100609-434100	GENERAL MATERIALS	88.41
	2031735909	32706	BAKER & TAYLOR BOOKS	10100609-434200	GENERAL MATERIALS	6.30
	2031735910	32707	BAKER & TAYLOR BOOKS	10100609-434100	GENERAL MATERIALS	133.91
	2031735910	32707	BAKER & TAYLOR BOOKS	10100609-434200	GENERAL MATERIALS	1.60
	2031735911	32709	BAKER & TAYLOR BOOKS	10100609-434100	GENERAL MATERIALS	5.52
	2031735911	32709	BAKER & TAYLOR BOOKS	10100609-434200	GENERAL MATERIALS	0.40

356	2031735912	32710	BAKER & TAYLOR BOOKS	10100609-434100	GENERAL MATERIALS	19.13
	2031735912	32710	BAKER & TAYLOR BOOKS	10100609-434200	GENERAL MATERIALS	0.40
	2031735913	32711	BAKER & TAYLOR BOOKS	10100609-434100	GENERAL MATERIALS	10.07
	2031735913	32711	BAKER & TAYLOR BOOKS	10100609-434200	GENERAL MATERIALS	1.05
	2031735914	32712	BAKER & TAYLOR BOOKS	10100609-434100	GENERAL MATERIALS	131.37
	2031735914	32712	BAKER & TAYLOR BOOKS	10100609-434200	GENERAL MATERIALS	4.75
	2031705478	33767	BAKER & TAYLOR BOOKS	10100609-434100	GENERAL MATERIALS	10.26
	2031705478	33767	BAKER & TAYLOR BOOKS	10100609-434200	GENERAL MATERIALS	0.40
	2031705477	33768	BAKER & TAYLOR BOOKS	10100609-434100	GENERAL MATERIALS	13.42
	2031705477	33768	BAKER & TAYLOR BOOKS	10100609-434200	GENERAL MATERIALS	1.05
	2031705476	33769	BAKER & TAYLOR BOOKS	10100609-434100	GENERAL MATERIALS	16.00
	2031705476	33769	BAKER & TAYLOR BOOKS	10100609-434200	GENERAL MATERIALS	0.40
	2031705475	33770	BAKER & TAYLOR BOOKS	10100609-434100	GENERAL MATERIALS	58.38
	2031705475	33770	BAKER & TAYLOR BOOKS	10100609-434200	GENERAL MATERIALS	2.10
	2031705474	33771	BAKER & TAYLOR BOOKS	10100609-434100	GENERAL MATERIALS	61.01
	2031705474	33771	BAKER & TAYLOR BOOKS	10100609-434200	GENERAL MATERIALS	4.05
	2031705473	33772	BAKER & TAYLOR BOOKS	10100609-434100	GENERAL MATERIALS	10.07
	2031705473	33772	BAKER & TAYLOR BOOKS	10100609-434200	GENERAL MATERIALS	1.05
	2031705472	33773	BAKER & TAYLOR BOOKS	10100609-434100	GENERAL MATERIALS	47.60

356	2031705472	33773	BAKER & TAYLOR BOOKS	10100609-434200	GENERAL MATERIALS	0.90
	2031705471	33774	BAKER & TAYLOR BOOKS	10100609-434100	GENERAL MATERIALS	169.76
	2031705471	33774	BAKER & TAYLOR BOOKS	10100609-434200	GENERAL MATERIALS	8.70
	2031705470	33775	BAKER & TAYLOR BOOKS	10100609-434100	GENERAL MATERIALS	33.57
	2031705470	33775	BAKER & TAYLOR BOOKS	10100609-434200	GENERAL MATERIALS	3.15
	2031705469	33776	BAKER & TAYLOR BOOKS	10100609-434100	GENERAL MATERIALS	9.51
	2031705469	33776	BAKER & TAYLOR BOOKS	10100609-434200	GENERAL MATERIALS	1.05
	2031705468	33777	BAKER & TAYLOR BOOKS	10100609-434100	GENERAL MATERIALS	162.81
	2031705468	33777	BAKER & TAYLOR BOOKS	10100609-434200	GENERAL MATERIALS	10.75
	2031705467	33778	BAKER & TAYLOR BOOKS	10100609-434100	GENERAL MATERIALS	26.48
	2031705467	33778	BAKER & TAYLOR BOOKS	10100609-434200	GENERAL MATERIALS	1.30
	2031705466	33779	BAKER & TAYLOR BOOKS	10100609-434100	GENERAL MATERIALS	142.91
	2031705466	33779	BAKER & TAYLOR BOOKS	10100609-434200	GENERAL MATERIALS	4.30
	2031691049	33780	BAKER & TAYLOR BOOKS	10100609-434100	GENERAL MATERIALS	9.52
	2031691049	33780	BAKER & TAYLOR BOOKS	10100609-434200	GENERAL MATERIALS	1.05
	2031691048	33781	BAKER & TAYLOR BOOKS	10100609-434100	GENERAL MATERIALS	71.09
	2031691048	33781	BAKER & TAYLOR BOOKS	10100609-434200	GENERAL MATERIALS	3.55
	2031758007	33875	BAKER & TAYLOR BOOKS	10100609-434100	GENERAL MATERIALS	66.66
	2031758007	33875	BAKER & TAYLOR BOOKS	10100609-434200	GENERAL MATERIALS	2.50

356	2031758006	33876	BAKER & TAYLOR BOOKS	10100609-434100	IN_2031758006	15.68
	2031758006	33876	BAKER & TAYLOR BOOKS	10100609-434200	IN_2031758006	1.05
	2031758005	33877	BAKER & TAYLOR BOOKS	10100609-434100	GENERAL MATERIALS	14.56
	2031758005	33877	BAKER & TAYLOR BOOKS	10100609-434200	GENERAL MATERIALS	1.05
	2031709709	33878	BAKER & TAYLOR BOOKS	10100609-434100	GENERAL MATERIALS	10.26
	2031709709	33878	BAKER & TAYLOR BOOKS	10100609-434200	GENERAL MATERIALS	0.40
	2031709708	33879	BAKER & TAYLOR BOOKS	10100609-434100	GENERAL MATERIALS	14.56
	2031709708	33879	BAKER & TAYLOR BOOKS	10100609-434200	GENERAL MATERIALS	1.05
	2031709707	33880	BAKER & TAYLOR BOOKS	10100609-434100	GENERAL MATERIALS	46.39
	2031709707	33880	BAKER & TAYLOR BOOKS	10100609-434200	GENERAL MATERIALS	3.40
	2031709706	33881	BAKER & TAYLOR BOOKS	10100609-434100	GENERAL MATERIALS	56.13
	2031709706	33881	BAKER & TAYLOR BOOKS	10100609-434200	GENERAL MATERIALS	3.55
	2031709705	33882	BAKER & TAYLOR BOOKS	10100609-434100	GENERAL MATERIALS	188.55
	2031709705	33882	BAKER & TAYLOR BOOKS	10100609-434200	GENERAL MATERIALS	6.60
	2031709704	33883	BAKER & TAYLOR BOOKS	10100609-434100	GENERAL MATERIALS	16.79
	2031709704	33883	BAKER & TAYLOR BOOKS	10100609-434200	GENERAL MATERIALS	0.40
	2031709703	33884	BAKER & TAYLOR BOOKS	10100609-434100	GENERAL MATERIALS	514.24
	2031709703	33884	BAKER & TAYLOR BOOKS	10100609-434500	GENERAL MATERIALS	20.45
	2031705483	33885	BAKER & TAYLOR BOOKS	10100609-434100	GENERAL MATERIALS	28.96

356	2031705483	33885	BAKER & TAYLOR BOOKS	10100609-434200	GENERAL MATERIALS	0.80
	2031705482	33886	BAKER & TAYLOR BOOKS	10100609-434100	GENERAL MATERIALS	94.14
	2031705482	33886	BAKER & TAYLOR BOOKS	10100609-434200	GENERAL MATERIALS	7.65
	2031705481	33887	BAKER & TAYLOR BOOKS	10100609-434100	GENERAL MATERIALS	15.20
	2031705481	33887	BAKER & TAYLOR BOOKS	10100609-434200	GENERAL MATERIALS	0.40
	2031705480	33888	BAKER & TAYLOR BOOKS	10100609-434100	GENERAL MATERIALS	10.97
	2031705480	33888	BAKER & TAYLOR BOOKS	10100609-434200	GENERAL MATERIALS	0.40
	2031705479	33889	BAKER & TAYLOR BOOKS	10100609-434100	GENERAL MATERIALS	11.95
	2031705479	33889	BAKER & TAYLOR BOOKS	10100609-434200	GENERAL MATERIALS	0.25
	2031691047	33089	BAKER & TAYLOR BOOKS	10100609-434100	GENERAL MATERIALS	14.24
	2031691047	33089	BAKER & TAYLOR BOOKS	10100609-434200	GENERAL MATERIALS	0.40
	2031691046	33090	BAKER & TAYLOR BOOKS	10100609-434100	GENERAL MATERIALS	9.51
	2031691046	33090	BAKER & TAYLOR BOOKS	10100609-434200	GENERAL MATERIALS	1.05
	2031691045	33091	BAKER & TAYLOR BOOKS	10100609-434100	GENERAL MATERIALS	22.52
	2031691045	33091	BAKER & TAYLOR BOOKS	10100609-434200	GENERAL MATERIALS	0.40
	2031691044	33092	BAKER & TAYLOR BOOKS	10100609-434100	GENERAL MATERIALS	29.19
	2031691044	33092	BAKER & TAYLOR BOOKS	10100609-434200	GENERAL MATERIALS	1.05
	2031691043	33093	BAKER & TAYLOR BOOKS	10100609-434100	GENERAL MATERIALS	1,542.83
	2031691043	33093	BAKER & TAYLOR BOOKS	10100609-434200	GENERAL MATERIALS	94.25

356	2031735907	33039	BAKER & TAYLOR BOOKS	10100609-434100	GENERAL MATERIALS	3.40
	2031735907	33039	BAKER & TAYLOR BOOKS	10100609-434200	GENERAL MATERIALS	111.06
	2031691042	33020	BAKER & TAYLOR BOOKS	10100609-434100	GENERAL MATERIALS	25.16
	2031691042	33020	BAKER & TAYLOR BOOKS	10100609-434200	GENERAL MATERIALS	0.80
	2031691041	33021	BAKER & TAYLOR BOOKS	10100609-434100	GENERAL MATERIALS	15.12
	2031691041	33021	BAKER & TAYLOR BOOKS	10100609-434200	GENERAL MATERIALS	1.05
	2031691040	33022	BAKER & TAYLOR BOOKS	10100609-434100	GENERAL MATERIALS	18.99
	2031691040	33022	BAKER & TAYLOR BOOKS	10100609-434200	GENERAL MATERIALS	0.40
	2031691039	33023	BAKER & TAYLOR BOOKS	10100609-434100	GENERAL MATERIALS	65.00
	2031691039	33023	BAKER & TAYLOR BOOKS	10100609-434200	GENERAL MATERIALS	0.40
	2031750747	33025	BAKER & TAYLOR BOOKS	10100609-434100	GENERAL MATERIALS	30.97
	2031750747	33025	BAKER & TAYLOR BOOKS	10100609-434200	GENERAL MATERIALS	1.45
	2031750746	33026	BAKER & TAYLOR BOOKS	10100609-434100	GENERAL MATERIALS	38.27
	2031750746	33026	BAKER & TAYLOR BOOKS	10100609-434200	GENERAL MATERIALS	2.50
	2031750745	33027	BAKER & TAYLOR BOOKS	10100609-434100	GENERAL MATERIALS	23.19
	2031750745	33027	BAKER & TAYLOR BOOKS	10100609-434200	GENERAL MATERIALS	0.80
	2031750744	33028	BAKER & TAYLOR BOOKS	10100609-434100	GENERAL MATERIALS	55.37
	2031750744	33028	BAKER & TAYLOR BOOKS	10100609-434200	GENERAL MATERIALS	5.25
	2031750743	33029	BAKER & TAYLOR BOOKS	10100609-434100	GENERAL MATERIALS	18.99

356	2031750743	33029	BAKER & TAYLOR BOOKS	10100609-434200	GENERAL MATERIALS	0.40
	2031750742	33030	BAKER & TAYLOR BOOKS	10100609-434100	GENERAL MATERIALS	129.33
	2031750742	33030	BAKER & TAYLOR BOOKS	10100609-434200	GENERAL MATERIALS	8.80
	2031750741	33031	BAKER & TAYLOR BOOKS	10100609-434100	GENERAL MATERIALS	103.36
	2031750741	33031	BAKER & TAYLOR BOOKS	10100609-434200	GENERAL MATERIALS	6.30
	2031750740	33033	BAKER & TAYLOR BOOKS	10100609-434100	GENERAL MATERIALS	43.11
	2031750740	33033	BAKER & TAYLOR BOOKS	10100609-434200	GENERAL MATERIALS	3.15
	2031750739	33034	BAKER & TAYLOR BOOKS	10100609-434100	GENERAL MATERIALS	22.46
	2031750739	33034	BAKER & TAYLOR BOOKS	10100609-434200	GENERAL MATERIALS	0.40
	2031750738	33035	BAKER & TAYLOR BOOKS	10100609-434100	GENERAL MATERIALS	52.77
	2031750738	33035	BAKER & TAYLOR BOOKS	10100609-434200	GENERAL MATERIALS	1.70
	2031750737	33032	BAKER & TAYLOR BOOKS	10100609-434100	GENERAL MATERIALS	63.83
	2031750737	33032	BAKER & TAYLOR BOOKS	10100609-434200	GENERAL MATERIALS	2.05
	2031750736	33036	BAKER & TAYLOR BOOKS	10100609-434100	GENERAL MATERIALS	273.14
	2031750736	33036	BAKER & TAYLOR BOOKS	10100609-434200	GENERAL MATERIALS	9.80
	2031750735	33037	BAKER & TAYLOR BOOKS	10100609-434100	GENERAL MATERIALS	11.97
	2031750735	33037	BAKER & TAYLOR BOOKS	10100609-434200	GENERAL MATERIALS	0.25
	2031750734	33038	BAKER & TAYLOR BOOKS	10100609-434100	GENERAL MATERIALS	387.28
	2031750734	33038	BAKER & TAYLOR BOOKS	10100609-434200	GENERAL MATERIALS	17.35

356	2031761955	34140	BAKER & TAYLOR BOOKS	10100609-434100	GENERAL MATERIALS	15.11
	2031761955	34140	BAKER & TAYLOR BOOKS	10100609-434200	GENERAL MATERIALS	1.05
	2031758021	34157	BAKER & TAYLOR BOOKS	10100609-434100	GENERAL MATERIALS	9.00
	2031758021	34157	BAKER & TAYLOR BOOKS	10100609-434200	GENERAL MATERIALS	0.40
	2031758020	34158	BAKER & TAYLOR BOOKS	10100609-434100	GENERAL MATERIALS	13.42
	2031758020	34158	BAKER & TAYLOR BOOKS	10100609-434200	GENERAL MATERIALS	1.05
	2031758019	34159	BAKER & TAYLOR BOOKS	10100609-434100	GENERAL MATERIALS	44.79
	2031758019	34159	BAKER & TAYLOR BOOKS	10100609-434200	GENERAL MATERIALS	3.15
	2031758018	34160	BAKER & TAYLOR BOOKS	10100609-434100	GENERAL MATERIALS	20.89
	2031758018	34160	BAKER & TAYLOR BOOKS	10100609-434200	GENERAL MATERIALS	0.40
	2031758017	34161	BAKER & TAYLOR BOOKS	10100609-434100	GENERAL MATERIALS	10.05
	2031758017	34161	BAKER & TAYLOR BOOKS	10100609-434200	GENERAL MATERIALS	1.05
	2031758016	34162	BAKER & TAYLOR BOOKS	10100609-434100	GENERAL MATERIALS	20.26
	2031758016	34162	BAKER & TAYLOR BOOKS	10100609-434200	GENERAL MATERIALS	0.40
	2031758015	34163	BAKER & TAYLOR BOOKS	10100609-434100	GENERAL MATERIALS	11.12
	2031758015	34163	BAKER & TAYLOR BOOKS	10100609-434200	GENERAL MATERIALS	0.40
	2031758014	34165	BAKER & TAYLOR BOOKS	10100609-434100	GENERAL MATERIALS	45.78
	2031758014	34165	BAKER & TAYLOR BOOKS	10100609-434200	GENERAL MATERIALS	0.80
	2031758013	34164	BAKER & TAYLOR BOOKS	10100609-434100	GENERAL MATERIALS	7.27

356	2031758013	34164	BAKER & TAYLOR BOOKS	10100609-434200	GENERAL MATERIALS	1.05
	2031758012	34166	BAKER & TAYLOR BOOKS	10100609-434100	GENERAL MATERIALS	99.66
	2031758012	34166	BAKER & TAYLOR BOOKS	10100609-434200	GENERAL MATERIALS	7.35
	2031758011	34167	BAKER & TAYLOR BOOKS	10100609-434100	GENERAL MATERIALS	15.12
	2031758011	34167	BAKER & TAYLOR BOOKS	10100609-434200	GENERAL MATERIALS	1.05
	2031758010	34168	BAKER & TAYLOR BOOKS	10100609-434100	GENERAL MATERIALS	10.05
	2031758010	34168	BAKER & TAYLOR BOOKS	10100609-434200	GENERAL MATERIALS	1.05
	2031758009	34169	BAKER & TAYLOR BOOKS	10100609-434100	GENERAL MATERIALS	15.12
	2031758009	34169	BAKER & TAYLOR BOOKS	10100609-434200	GENERAL MATERIALS	1.05
	2031758008	34170	BAKER & TAYLOR BOOKS	10100609-434100	GENERAL MATERIALS	34.62
	2031758008	34170	BAKER & TAYLOR BOOKS	10100609-434200	GENERAL MATERIALS	1.15
	2031773117	34199	BAKER & TAYLOR BOOKS	10100609-434100	GENERAL MATERIALS	1,096.74
	2031773117	34199	BAKER & TAYLOR BOOKS	10100609-434200	GENERAL MATERIALS	48.20
	2031773118	34198	BAKER & TAYLOR BOOKS	10100609-434100	GENERAL MATERIALS	12.30
	2031773118	34198	BAKER & TAYLOR BOOKS	10100609-434200	GENERAL MATERIALS	1.05
	2031773119	34197	BAKER & TAYLOR BOOKS	10100609-434100	GENERAL MATERIALS	10.07
	2031773119	34197	BAKER & TAYLOR BOOKS	10100609-434200	GENERAL MATERIALS	1.05
	2031773120	34196	BAKER & TAYLOR BOOKS	10100609-434100	GENERAL MATERIALS	15.79
	2031773120	34196	BAKER & TAYLOR BOOKS	10100609-434200	GENERAL MATERIALS	0.40

356	2031773121	34195	BAKER & TAYLOR BOOKS	10100609-434100	GENERAL MATERIALS	4.19
	2031773121	34195	BAKER & TAYLOR BOOKS	10100609-434200	GENERAL MATERIALS	0.25
	2031777093	34194	BAKER & TAYLOR BOOKS	10100609-434100	GENERAL MATERIALS	38.00
	2031777093	34194	BAKER & TAYLOR BOOKS	10100609-434200	GENERAL MATERIALS	1.05
	2031777096	34192	BAKER & TAYLOR BOOKS	10100609-434100	GENERAL MATERIALS	81.05
	2031777096	34192	BAKER & TAYLOR BOOKS	10100609-434200	GENERAL MATERIALS	4.50
	2031761956	34191	BAKER & TAYLOR BOOKS	10100609-434100	GENERAL MATERIALS	25.91
	2031761956	34191	BAKER & TAYLOR BOOKS	10100609-434200	GENERAL MATERIALS	1.45
	2031761957	34190	BAKER & TAYLOR BOOKS	10100609-434100	GENERAL MATERIALS	30.99
	2031761957	34190	BAKER & TAYLOR BOOKS	10100609-434200	GENERAL MATERIALS	0.65
	2031761958	34189	BAKER & TAYLOR BOOKS	10100609-434100	GENERAL MATERIALS	23.74
	2031761958	34189	BAKER & TAYLOR BOOKS	10100609-434200	GENERAL MATERIALS	0.40
	2031761959	34188	BAKER & TAYLOR BOOKS	10100609-434100	GENERAL MATERIALS	50.35
	2031761959	34188	BAKER & TAYLOR BOOKS	10100609-434200	GENERAL MATERIALS	4.20
	2031761960	34187	BAKER & TAYLOR BOOKS	10100609-434100	GENERAL MATERIALS	69.11
	2031761960	34187	BAKER & TAYLOR BOOKS	10100609-434200	GENERAL MATERIALS	5.50
	2031761961	34186	BAKER & TAYLOR BOOKS	10100609-434100	GENERAL MATERIALS	120.91
	2031761961	34186	BAKER & TAYLOR BOOKS	10100609-434200	GENERAL MATERIALS	8.40
	2031761963	34185	BAKER & TAYLOR BOOKS	10100609-434100	GENERAL MATERIALS	58.79

356	2031761963	34185	BAKER & TAYLOR BOOKS	10100609-434200	GENERAL MATERIALS	1.20
	2031761964	34184	BAKER & TAYLOR BOOKS	10100609-434100	GENERAL MATERIALS	20.70
	2031761964	34184	BAKER & TAYLOR BOOKS	10100609-434200	GENERAL MATERIALS	2.10
	2031761965	34183	BAKER & TAYLOR BOOKS	10100609-434100	GENERAL MATERIALS	9.59
	2031761965	34183	BAKER & TAYLOR BOOKS	10100609-434200	GENERAL MATERIALS	0.40
	2031761966	34182	BAKER & TAYLOR BOOKS	10100609-434100	GENERAL MATERIALS	10.07
	2031761966	34182	BAKER & TAYLOR BOOKS	10100609-434200	GENERAL MATERIALS	0.90
	2031761967	34181	BAKER & TAYLOR BOOKS	10100609-434100	GENERAL MATERIALS	223.26
	2031761967	34181	BAKER & TAYLOR BOOKS	10100609-434200	GENERAL MATERIALS	19.50
	2031761968	34180	BAKER & TAYLOR BOOKS	10100609-434100	GENERAL MATERIALS	298.32
	2031761968	34180	BAKER & TAYLOR BOOKS	10100609-434200	GENERAL MATERIALS	8.90
	2031773115	34179	BAKER & TAYLOR BOOKS	10100609-434100	GENERAL MATERIALS	34.71
	2031773115	34179	BAKER & TAYLOR BOOKS	10100609-434200	GENERAL MATERIALS	2.10
	2031773116	34178	BAKER & TAYLOR BOOKS	10100609-434100	GENERAL MATERIALS	10.63
	2031773116	34178	BAKER & TAYLOR BOOKS	10100609-434200	GENERAL MATERIALS	1.05
	2031777095	34176	BAKER & TAYLOR BOOKS	10100609-434100	GENERAL MATERIALS	29.67
	2031777095	34176	BAKER & TAYLOR BOOKS	10100609-434200	GENERAL MATERIALS	2.10
	2031761962	34177	BAKER & TAYLOR BOOKS	10100609-434100	GENERAL MATERIALS	15.95
	2031761962	34177	BAKER & TAYLOR BOOKS	10100609-434200	GENERAL MATERIALS	0.40
					BAKER & TAYLOR BOOKS Total:	10,813.79

7464	03/17/16	34250	BARTSCH LEE DUO	10100609-422500	PROGRAMMING	270.00
					BARTSCH LEE DUO Total:	270.00
407	51427	32397	BASLER PRINTING COMPANY INC	10100609-434200	SUPPLIES	206.08
					BASLER PRINTING COMPANY INC Total:	206.08
586	096598	33139	BLACK HILLS CHEMICAL CO	10100610-426400	MACHINES/EQUIPMENT	64.79
	096215	32958	BLACK HILLS CHEMICAL CO	10100610-426400	MAINTENANCE/FACILITIES	79.84
					BLACK HILLS CHEMICAL CO Total:	144.63
615	2016-02-9038	33040	BLACK HILLS PATROL	10100609-422500	SECURITY	2,283.61
	2016-02-9030	33041	BLACK HILLS PATROL	10100609-422500	SECURITY	4,373.25
					BLACK HILLS PATROL Total:	6,656.86
619	S1394-16-0484	33044	BLACK HILLS PIZZA	10100610-429400	PROGRAMMING	57.45
					BLACK HILLS PIZZA Total:	57.45
7520	03/14/16	34251	BUXCEL, KAREN	10100609-422500	PROGRAMMING	75.00
					BUXCEL, KAREN Total:	75.00
988	801022	33783	CHRIS SUPPLY COMPANY	10100609-429500	MACHINES/EQUIPMENT	36.48
					CHRIS SUPPLY COMPANY Total:	36.48
1044	41355	32375	CLIMATE CONTROL SYSTEMS & SERVICE	10100609-422500	REFUND OVERPMT FINAL BILL 0014	67.50
	41355	32375	CLIMATE CONTROL SYSTEMS & SERVICE	10100609-425200	REFUND OVERPMT FINAL BILL 0014	9.64
					CLIMATE CONTROL SYSTEMS & SERVICE Total:	77.14
651	03/21/16	34173	CODY BLACKBIRD	10100609-422500	PROGRAMMING	500.00
					CODY BLACKBIRD Total:	500.00

1234	IN296963	32371	DAKOTA BUSINESS CENTER	10100609-426100	MACHINES/EQUIPMENT	12.64
	IN296963	32371	DAKOTA BUSINESS CENTER	10100610-424400	MACHINES/EQUIPMENT	176.64
	IN296963	32371	DAKOTA BUSINESS CENTER	99600971-425300	MACHINES/EQUIPMENT	39.01
	IN297037	32374	DAKOTA BUSINESS CENTER	10100609-426100	MACHINES/EQUIPMENT	1.20
	IN297037	32374	DAKOTA BUSINESS CENTER	99600971-424400	MACHINES/EQUIPMENT	317.58
	IN297037	32374	DAKOTA BUSINESS CENTER	99600971-425300	MACHINES/EQUIPMENT	442.78
	IN297547	32951	DAKOTA BUSINESS CENTER	99600971-424400	MACHINES/EQUIPMENT	176.64
	IN297547	32951	DAKOTA BUSINESS CENTER	99600971-425300	MACHINES/EQUIPMENT	39.01
	IN297354	34141	DAKOTA BUSINESS CENTER	10100609-426100	MACHINES/EQUIPMENT	84.25
	IN297354	34141	DAKOTA BUSINESS CENTER	99600971-424400	MACHINES/EQUIPMENT	141.97
	IN297354	34141	DAKOTA BUSINESS CENTER	99600971-425300	MACHINES/EQUIPMENT	106.98
	IN297787	34142	DAKOTA BUSINESS CENTER	99600971-424400	MACHINES/EQUIPMENT	141.97
	IN297787	34142	DAKOTA BUSINESS CENTER	99600971-425300	MACHINES/EQUIPMENT	106.98
					DAKOTA BUSINESS CENTER Total:	1,787.65
1248	100365986	32402	DAKOTA PARTY	10100610-429400	PROGRAMMING	4.98
	100367840	32403	DAKOTA PARTY	10100610-429400	PROGRAMMING	19.92
	100366247	32401	DAKOTA PARTY	10100610-429400	PROGRAMMING	12.44
	100371115	33785	DAKOTA PARTY	10100609-429400	PROGRAMMING	13.97
	100365985	33136	DAKOTA PARTY	10100610-429400	PROGRAMMING	23.13

1248	100369961	33141	DAKOTA PARTY	10100610-429400	PROGRAMMING	32.89
					DAKOTA PARTY Total:	107.33
1326	5814286	28279	DEMCO INC	10100609-434200	GENERAL MATERIALS	149.59
	5816994	31839	DEMCO INC	10100609-434200	GENERAL MATERIALS	457.82
					DEMCO INC Total:	607.41
1335	RC00468078-001	32399	DENNIS SUPPLY	10100609-425200	STRUCTURE	138.48
	RC00468080-001	33043	DENNIS SUPPLY	10100609-425200	STRUCTURE	167.40
					DENNIS SUPPLY Total:	305.88
1359	775161711	32398	DIAMOND VOGEL PAINT CTR	10100609-425200	STRUCTURE	28.19
					DIAMOND VOGEL PAINT CTR Total:	28.19
6124	105	34150	DUBS QUALITY PAINTING	10100609-425200	STRUCTURE	382.65
					DUBS QUALITY PAINTING Total:	382.65
7493	5743306A	33138	EVANCED	10100609-425900	SUPPORT SERVICES	873.00
					EVANCED Total:	873.00
1789	02/29/16	32367	FRIENDS OF THE LIBRARY	99600971-453000	REFUNDS	2,057.60
					FRIENDS OF THE LIBRARY Total:	2,057.60
2168	235477-0	32373	HEARTLAND PAPER CO	10100610-426400	MAINTENANCE/FACILITIES	42.65
	237856-0	32959	HEARTLAND PAPER CO	10100610-426400	MAINTENANCE/FACILITIES	138.36
					HEARTLAND PAPER CO Total:	181.01
7346	10139	24088	HOTPINK INK	10100610-422500	MISC	2,000.00
					HOTPINK INK Total:	2,000.00

2453	1901002006059	32396	INTERSTATE BATTERIES INC	10100610-426400	MAINTENANCE/FACILITIES	77.49
					INTERSTATE BATTERIES INC Total:	77.49
2498	5641	33890	JANTECH LLC	10100609-422500	SUPPORT SERVICES	220.00
					JANTECH LLC Total:	220.00
2499	120914	32491	JANWAY COMPANY	10100609-426100	SUPPLIES	4,080.00
					JANWAY COMPANY Total:	4,080.00
456	03/07-03/12/16	33094	KIMBERLY BECK	10100609-427000	TRAVEL/TRAINING	526.08
					KIMBERLY BECK Total:	526.08
6181	501026	32496	LIVING DESIGN	10100609-422500	DECOR	125.00
					LIVING DESIGN Total:	125.00
3208	71502	32495	MENARDS	10100609-426100	MAINTENANCE/FACILITIES	33.68
	71502	32495	MENARDS	10100609-426300	MAINTENANCE/FACILITIES	2.98
	71502	32495	MENARDS	10100609-426400	MAINTENANCE/FACILITIES	31.85
	73753	34171	MENARDS	10100609-426300	MAINTENANCE/FACILITIES	2.98
	73753	34171	MENARDS	10100609-426400	MAINTENANCE/FACILITIES	141.27
	73964	34172	MENARDS	10100609-429400	PROGRAMMING	81.14
					MENARDS Total:	293.90
3242	1268111017895	33140	MIDCONTINENT COMMUNICATIONS	10100610-428100	MACHINES/EQUIPMENT	1,000.00
	7009002027895	33137	MIDCONTINENT COMMUNICATIONS	10100610-428100	MACHINES/EQUIPMENT	215.00
	7009002027839	33135	MIDCONTINENT COMMUNICATIONS	10100610-428100	MACHINES/EQUIPMENT	215.00

3242					MIDCONTINENT COMMUNICATIONS Total:	1,430.00
3258	93730266	32395	MIDWEST TAPE EXCHANGE	10100609-434500	GENERAL MATERIALS	1,223.04
	93735383	32366	MIDWEST TAPE EXCHANGE	10100609-434200	GENERAL MATERIALS	60.00
	93735383	32366	MIDWEST TAPE EXCHANGE	10100609-434600	GENERAL MATERIALS	305.81
	93747946	33049	MIDWEST TAPE EXCHANGE	10100609-434200	GENERAL MATERIALS	2.50
	93747946	33049	MIDWEST TAPE EXCHANGE	10100609-434600	GENERAL MATERIALS	22.49
	93747947	33048	MIDWEST TAPE EXCHANGE	10100609-434200	GENERAL MATERIALS	10.00
	93747947	33048	MIDWEST TAPE EXCHANGE	10100609-434600	GENERAL MATERIALS	89.96
	93756837	33047	MIDWEST TAPE EXCHANGE	10100609-434200	GENERAL MATERIALS	2.50
	93756837	33047	MIDWEST TAPE EXCHANGE	10100609-434600	GENERAL MATERIALS	22.49
	93756838	33046	MIDWEST TAPE EXCHANGE	10100609-434200	GENERAL MATERIALS	7.50
	93756838	33046	MIDWEST TAPE EXCHANGE	10100609-434600	GENERAL MATERIALS	59.97
	93761101	33045	MIDWEST TAPE EXCHANGE	10100609-434200	GENERAL MATERIALS	2.50
	93761101	33045	MIDWEST TAPE EXCHANGE	10100609-434600	GENERAL MATERIALS	22.49
	93738991	33060	MIDWEST TAPE EXCHANGE	10100609-434200	GENERAL MATERIALS	7.50
	93738991	33060	MIDWEST TAPE EXCHANGE	10100609-434600	GENERAL MATERIALS	50.22
	93738993	33059	MIDWEST TAPE EXCHANGE	10100609-434200	GENERAL MATERIALS	2.50
	93738993	33059	MIDWEST TAPE EXCHANGE	10100609-434600	GENERAL MATERIALS	23.24
	93738996	33057	MIDWEST TAPE EXCHANGE	10100609-434200	GENERAL MATERIALS	5.00

3258	93738996	33057	MIDWEST TAPE EXCHANGE	10100609-434600	GENERAL MATERIALS	44.98
	93738994	33058	MIDWEST TAPE EXCHANGE	10100609-434200	GENERAL MATERIALS	30.00
	93738994	33058	MIDWEST TAPE EXCHANGE	10100609-434600	GENERAL MATERIALS	223.38
	93738997	33056	MIDWEST TAPE EXCHANGE	10100609-434200	GENERAL MATERIALS	2.50
	93738997	33056	MIDWEST TAPE EXCHANGE	10100609-434600	GENERAL MATERIALS	20.24
	93738998	33055	MIDWEST TAPE EXCHANGE	10100609-434200	GENERAL MATERIALS	10.00
	93738998	33055	MIDWEST TAPE EXCHANGE	10100609-434600	GENERAL MATERIALS	89.96
	93742896	33054	MIDWEST TAPE EXCHANGE	10100609-434100	GENERAL MATERIALS	24.99
	93742897	33053	MIDWEST TAPE EXCHANGE	10100609-434100	GENERAL MATERIALS	124.96
	93742898	33052	MIDWEST TAPE EXCHANGE	10100609-434100	GENERAL MATERIALS	214.93
	93747943	33051	MIDWEST TAPE EXCHANGE	10100609-434200	GENERAL MATERIALS	2.50
	93747943	33051	MIDWEST TAPE EXCHANGE	10100609-434600	GENERAL MATERIALS	22.49
	93747944	33050	MIDWEST TAPE EXCHANGE	10100609-434200	GENERAL MATERIALS	7.50
	93747944	33050	MIDWEST TAPE EXCHANGE	10100609-434600	GENERAL MATERIALS	67.47
	93770288	33808	MIDWEST TAPE EXCHANGE	10100609-434100	GENERAL MATERIALS	44.99
	93770394	33870	MIDWEST TAPE EXCHANGE	10100609-434200	GENERAL MATERIALS	2.50
	93770394	33870	MIDWEST TAPE EXCHANGE	10100609-434600	GENERAL MATERIALS	22.49
	93770396	33874	MIDWEST TAPE EXCHANGE	10100609-434200	GENERAL MATERIALS	12.50
	93770396	33874	MIDWEST TAPE EXCHANGE	10100609-434600	GENERAL MATERIALS	107.20

3258	93776886	33873	MIDWEST TAPE EXCHANGE	10100609-434200	GENERAL MATERIALS	12.50
	93776886	33873	MIDWEST TAPE EXCHANGE	10100609-434600	GENERAL MATERIALS	74.99
	93776887	33872	MIDWEST TAPE EXCHANGE	10100609-434200	GENERAL MATERIALS	2.50
	93776887	33872	MIDWEST TAPE EXCHANGE	10100609-434600	GENERAL MATERIALS	20.99
	93736500	33871	MIDWEST TAPE EXCHANGE	10100609-434200	GENERAL MATERIALS	121.20
	93780761	34266	MIDWEST TAPE EXCHANGE	10100609-434200	GENERAL MATERIALS	2.50
	93780761	34266	MIDWEST TAPE EXCHANGE	10100609-434600	GENERAL MATERIALS	22.49
	93780762	34263	MIDWEST TAPE EXCHANGE	10100609-434200	GENERAL MATERIALS	7.50
	93780762	34263	MIDWEST TAPE EXCHANGE	10100609-434600	GENERAL MATERIALS	61.47
	93780764	34261	MIDWEST TAPE EXCHANGE	10100609-434200	GENERAL MATERIALS	7.50
	93780764	34261	MIDWEST TAPE EXCHANGE	10100609-434600	GENERAL MATERIALS	42.73
	93780765	34259	MIDWEST TAPE EXCHANGE	10100609-434200	GENERAL MATERIALS	25.00
	93780765	34259	MIDWEST TAPE EXCHANGE	10100609-434600	GENERAL MATERIALS	194.90
	93788125	34257	MIDWEST TAPE EXCHANGE	10100609-434100	GENERAL MATERIALS	34.99
	93788126	34255	MIDWEST TAPE EXCHANGE	10100609-434100	GENERAL MATERIALS	201.95
	93788128	34253	MIDWEST TAPE EXCHANGE	10100609-434100	GENERAL MATERIALS	69.98
	93793573	34265	MIDWEST TAPE EXCHANGE	10100609-434200	GENERAL MATERIALS	27.50
	93793573	34265	MIDWEST TAPE EXCHANGE	10100609-434600	GENERAL MATERIALS	209.14
	93793575	34262	MIDWEST TAPE EXCHANGE	10100609-434200	GENERAL MATERIALS	15.00

3258	93793575	34262	MIDWEST TAPE EXCHANGE	10100609-434600	GENERAL MATERIALS	119.19
	93793576	34260	MIDWEST TAPE EXCHANGE	10100609-434200	GENERAL MATERIALS	7.50
	93793576	34260	MIDWEST TAPE EXCHANGE	10100609-434600	GENERAL MATERIALS	56.97
	93793577	34258	MIDWEST TAPE EXCHANGE	10100609-434200	GENERAL MATERIALS	2.50
	93793577	34258	MIDWEST TAPE EXCHANGE	10100609-434600	GENERAL MATERIALS	22.49
	93793578	34256	MIDWEST TAPE EXCHANGE	10100609-434200	GENERAL MATERIALS	2.50
	93793578	34256	MIDWEST TAPE EXCHANGE	10100609-434600	GENERAL MATERIALS	22.49
	93797394	34254	MIDWEST TAPE EXCHANGE	10100609-434200	GENERAL MATERIALS	5.00
	93797394	34254	MIDWEST TAPE EXCHANGE	10100609-434600	GENERAL MATERIALS	33.73
	93797395	34252	MIDWEST TAPE EXCHANGE	10100609-434200	GENERAL MATERIALS	30.00
	93797395	34252	MIDWEST TAPE EXCHANGE	10100609-434600	GENERAL MATERIALS	150.63
					MIDWEST TAPE EXCHANGE Total:	4,603.12
3517	006650	31914	NORTH CENTRAL SUPPLY INC	10100609-422500	MAINTENANCE/FACILITIES	196.63
					NORTH CENTRAL SUPPLY INC Total:	196.63
3530	189426	32493	NORTHWEST PIPE FITTINGS INC	10100609-425200	STRUCTURE	182.90
					NORTHWEST PIPE FITTINGS INC Total:	182.90
3555	0000447166	32372	OCLC INC	10100609-425900	SUPPORT SERVICES	3,090.68
					OCLC INC Total:	3,090.68
3617	136800005725 3022716	32365	OVERDRIVE INC	10100609-434500	GENERAL MATERIALS	16.95
	136815352034 0022916	32364	OVERDRIVE INC	10100610-434500	GENERAL MATERIALS	45.54

3617	136815545395 3022916	32362	OVERDRIVE INC	10100610-434500	GENERAL MATERIALS	816.59
	136817363369 3022916	32363	OVERDRIVE INC	10100610-434500	GENERAL MATERIALS	646.82
	136819513779 7022916	32361	OVERDRIVE INC	10100610-434500	GENERAL MATERIALS	840.46
	136800010202 3030416	32954	OVERDRIVE INC	10100610-434500	GENERAL MATERIALS	17.99
	136800021520 7030116	32960	OVERDRIVE INC	10100610-434500	GENERAL MATERIALS	59.95
	136800021551 7030116	32955	OVERDRIVE INC	10100610-434500	GENERAL MATERIALS	17.99
	136817095928 0030416	32957	OVERDRIVE INC	10100609-434500	GENERAL MATERIALS	202.79
	136817240485 3030416	32956	OVERDRIVE INC	10100610-434500	GENERAL MATERIALS	194.95
	136818512321 3030116	32952	OVERDRIVE INC	10100609-434500	GENERAL MATERIALS	577.81
	136800011116 7031016	33864	OVERDRIVE INC	10100609-434500	GENERAL MATERIALS	33.98
	136800023131 0030816	33860	OVERDRIVE INC	10100609-434500	GENERAL MATERIALS	316.97
	136800023152 0030816	33859	OVERDRIVE INC	10100609-434500	GENERAL MATERIALS	431.97
	136810241039 7030816	33858	OVERDRIVE INC	10100609-434500	GENERAL MATERIALS	48.94
	136810301645 0030816	33857	OVERDRIVE INC	10100609-434500	GENERAL MATERIALS	241.73
	136812390310 0030916	33856	OVERDRIVE INC	10100609-434500	GENERAL MATERIALS	489.96
	136814162237 3030916	33855	OVERDRIVE INC	10100609-434500	GENERAL MATERIALS	271.81
	136815271500 0030916	33869	OVERDRIVE INC	10100609-434500	GENERAL MATERIALS	69.99
	136815422479 3030916	33868	OVERDRIVE INC	10100609-434500	GENERAL MATERIALS	57.99
	133817240485 3030416	33866	OVERDRIVE INC	10100609-434500	GENERAL MATERIALS	194.95

3617	136800013036 7031416	34155	OVERDRIVE INC	10100609-434500	GENERAL MATERIALS	84.00
	136800020159 3031516	34153	OVERDRIVE INC	10100609-434500	GENERAL MATERIALS	65.00
	136800020171 3031516	34148	OVERDRIVE INC	10100609-434500	GENERAL MATERIALS	4.99
	136800020187 7031516	34147	OVERDRIVE INC	10100609-434500	GENERAL MATERIALS	281.99
	136800020213 3031516	34145	OVERDRIVE INC	10100609-434500	GENERAL MATERIALS	117.98
	136814245226 3031516	34143	OVERDRIVE INC	10100609-434500	GENERAL MATERIALS	723.23
	136814280776 0031516	34156	OVERDRIVE INC	10100610-434500	GENERAL MATERIALS	5.74
	136814420588 7031516	34154	OVERDRIVE INC	10100609-434500	GENERAL MATERIALS	495.59
	136816124951 3031416	34152	OVERDRIVE INC	10100609-434500	GENERAL MATERIALS	57.98
					OVERDRIVE INC Total:	7,432.63
3848	3600050206	32953	RAPID CITY AREA SCHOOL DIST 51-4	10100609-422500	STRUCTURE	4,408.91
					RAPID CITY AREA SCHOOL DIST 51-4 Total:	4,408.91
3849	2016-122	34174	RAPID CITY ARTS COUNCIL	10100609-429400	PROGRAMMING	535.00
					RAPID CITY ARTS COUNCIL Total:	535.00
3887	25911	34201	RAPID FIRE PROTECTION INC	10100609-422500	MACHINES/EQUIPMENT	340.00
	25912	34200	RAPID FIRE PROTECTION INC	10100609-422500	MACHINES/EQUIPMENT	325.00
					RAPID FIRE PROTECTION INC Total:	665.00
3863	02/29/16	32494	RC JOURNAL - ADVERTISING	10100610-429300	SUBSCRIPTION	38.93
					RC JOURNAL - ADVERTISING Total:	38.93

3958	00915077694	33784	RED WING SHOE STORE	10100609-426300	MAINTENANCE/FACILITIES	152.96
					RED WING SHOE STORE Total:	152.96
4330	2400079	32556	SERVALL UNIFORM/LINEN CO	10100610-426400	MAINTENANCE/FACILITIES	92.12
					SERVALL UNIFORM/LINEN CO Total:	92.12
4836	3002282486	27351	THYSSENKRUPP ELEVATOR CORP	10100609-425200	STRUCTURE	680.13
					THYSSENKRUPP ELEVATOR CORP Total:	680.13
6415	006674901 02/06/16	34144	VAST BUSINESS	10100610-428100	MACHINES/EQUIPMENT	473.78
					VAST BUSINESS Total:	473.78
5118	005447	31919	WALMART COMMUNITY	10100609-426100	SUPPLIES	23.14
	005447	31919	WALMART COMMUNITY	10100609-426300	SUPPLIES	5.00
	005447	31919	WALMART COMMUNITY	10100609-429400	SUPPLIES	9.54
	006386	31920	WALMART COMMUNITY	10100609-429400	PROGRAMMING	1.37
	002994		WALMART COMMUNITY	10100609-429400	CREDIT-RTN PAPER	(31.88)
	001748	34149	WALMART COMMUNITY	10100609-429400	PROGRAMMING	30.38
	001921	34151	WALMART COMMUNITY	10100609-429400	PROGRAMMING	11.04
					WALMART COMMUNITY Total:	48.59
5220	669697-0	31912	WESTERN STATIONERS	10100609-426100	SUPPLIES	71.98
	669697-1	31912	WESTERN STATIONERS	10100609-426100	SUPPLIES	133.79
	669697-2	31912	WESTERN STATIONERS	10100609-426100	SUPPLIES	40.78
	671027-0	33042	WESTERN STATIONERS	10100609-426100	SUPPLIES	149.24

5220					WESTERN STATIONERS Total:	395.79
5287	1629	33095	WILLY'S SAW SHOP LLC	99600971-425300	EQUIPMENT/MACHINES	52.35
					WILLY'S SAW SHOP LLC Total:	52.35
6037	3009447	32400	WT.COX INFORMATION SVCS	10100610-429400	GENERAL MATERIALS	46.64
					WT.COX INFORMATION SVCS Total:	46.64
Total					Grand Total:	58,526.31