

KLJ
 REGISTERED PROFESSIONAL ENGINEER
 11840
 DANA R. FOREMAN
 07/04/18
 SOUTH DAKOTA

SCALE 30 0 30 60 FEET

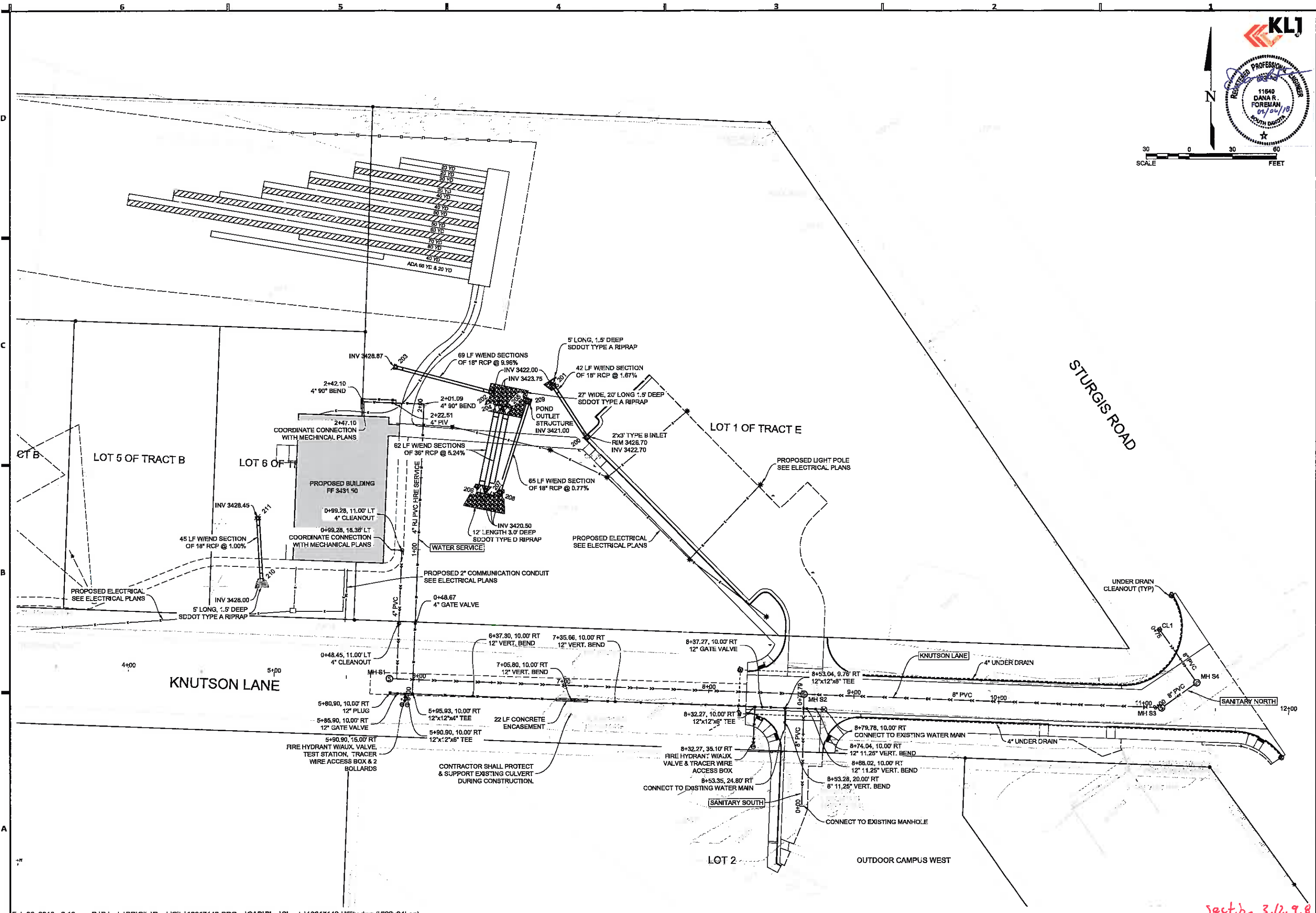
JLG
 architects

510 J 9th Street, Suite 207
 Rapid City, SD 57701
 phone 605.394.8892
 www.jlgarchitects.com
 copyright © 2017

REVISION SCHEDULE		
NO.	DESCRIPTION	DATE

OSE# G2117-10X
 JLG ARCHITECTS
OCW HUNTER ED BLDG & ARCHERY PARK
 RAPID CITY, SD

DATE	02/01/2018
PHASE	CONSTRUCTION
DOCUMENTS	DOCUMENTS
PROJECT	10617142
SHEET	C-116
UTILITY PLAN	UTILITY PLAN



sect. b. 3.12.9.8