



SCALE: 1" = 30'
MARCH 19, 2016

BRITTON ENGINEERING &
LAND SURVEYING, INC
8035 BLACK HAWK ROAD, SUITE 5,
P.O. BOX 649 BLACK HAWK, SD 57718
PH. (605) 716-7988

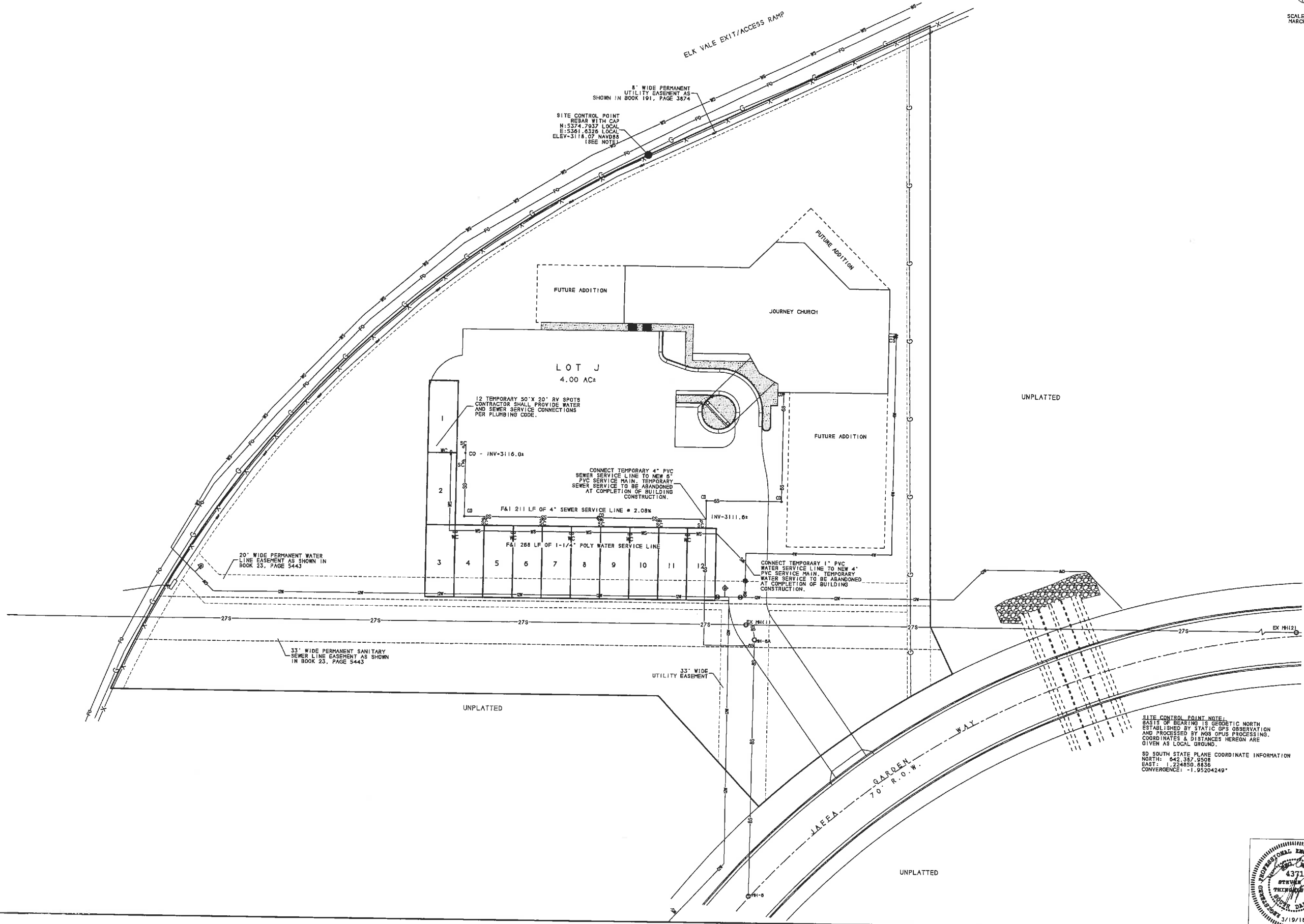
B
E
L
S

LOT J OF ORCHARD MEADOWS
SEC 9, T1N, R8E, BHM, RAPID CITY
PENNINGTON COUNTY, SOUTH DAKOTA

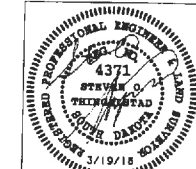
JOURNEY CHURCH
TEMPORARY RV PARKING WITH
TEMP WATER & SEWER SERVICES

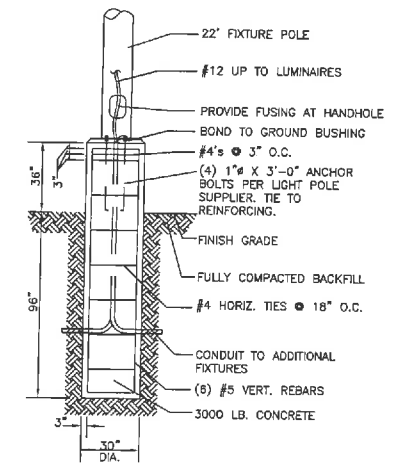
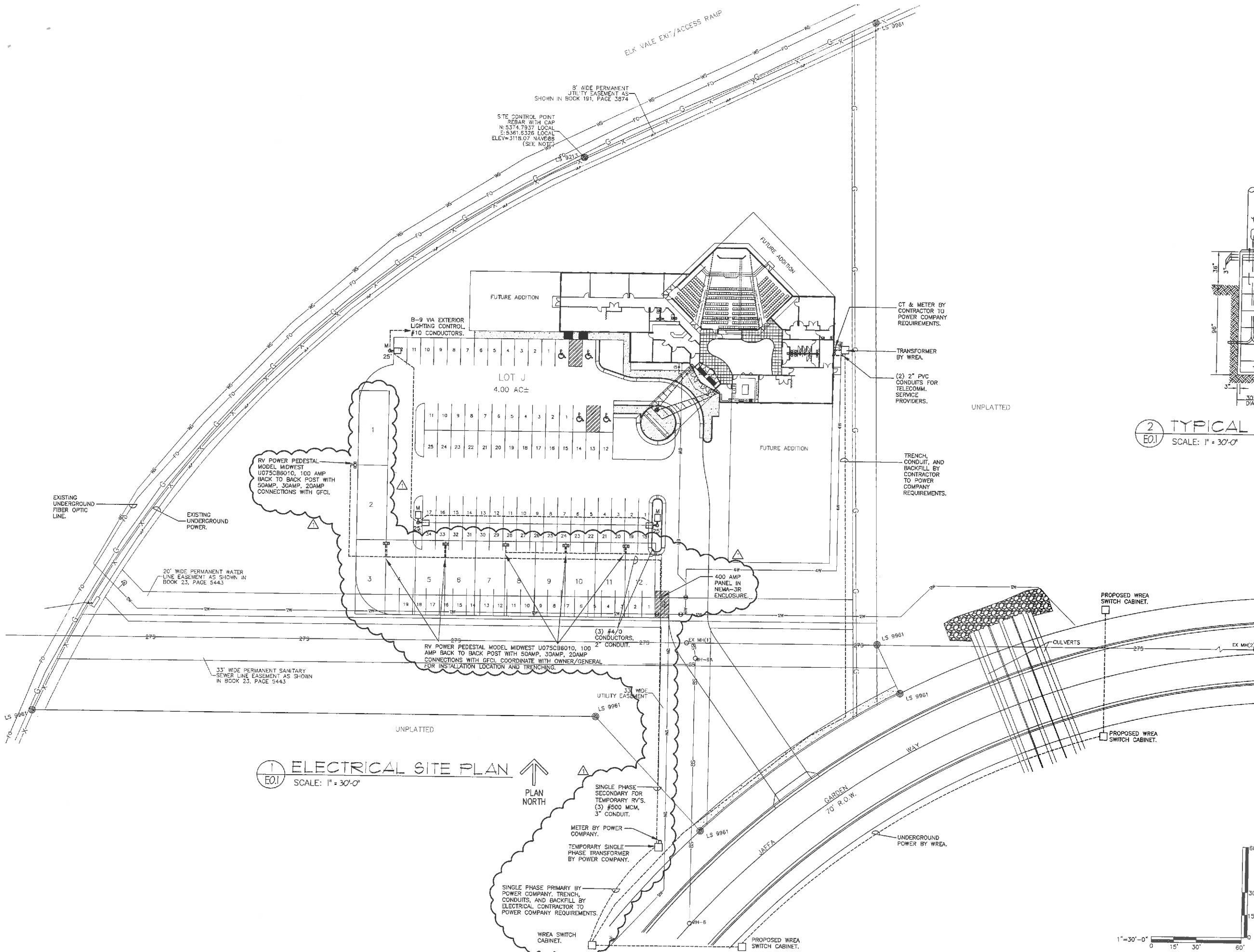
Project No: 12-011444
Revise: 2-B-11-ADDED
BY: PARKING SERVICES
FOR OWNER REQUEST
ADDED TRAFFIC FLOW
AREAS
Project No: 12-011444
SOT: _____
Drawn By: MBI
Designed By: SOL
Checked By: SOL
Date: 10/09/17

3A
1



SITE CONTROL POINT NOTE:
BASIS OF BEARING IS GEODETIC NORTH
ESTABLISHED BY STATIC GPS OBSERVATION
AND PROCESSED BY NGS OPUS PROCESSING.
COORDINATES & DISTANCES HEREON ARE
GIVEN AS LOCAL GROUND.
SD SOUTH STATE PLANE COORDINATE INFORMATION
NORTH: 842,387.5508
EAST: 1,224,850.8636
CONVERGENCE: -1.95204249"





2 TYPICAL POLE BASE DETAIL
 E0.1 SCALE: 1" = 30'-0"

TEMPORARY RV POWER
 DESIGN 3/22/18

MALONE ENGINEERING
 MECHANICAL ELECTRICAL
 230 Main Street
 Rapid City, SD 57701
 Office: (605) 341-6539
 101 22nd Ave Suite B
 Brookings, SD 57005
 Office: (605) 692-9880

SCHILMGEN DESIGN CONSULTANTS INC.
 324 St Joseph St Suite 207
 Rapid City, SD 57701
 605.342.3388 ph
 www.schilmgengdesign.com

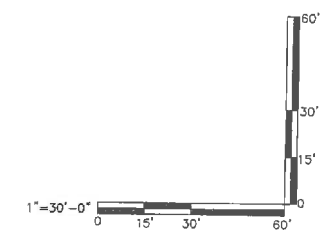
THIS DOCUMENT(S) IS (ARE) THE PROPERTY OF SCHILMGEN DESIGN INC. AND SHALL NOT BE USED FOR ANY OTHER PROJECT FOR ANY REASON WITHOUT THE WRITTEN CONSENT OF SCHILMGEN DESIGN INC.

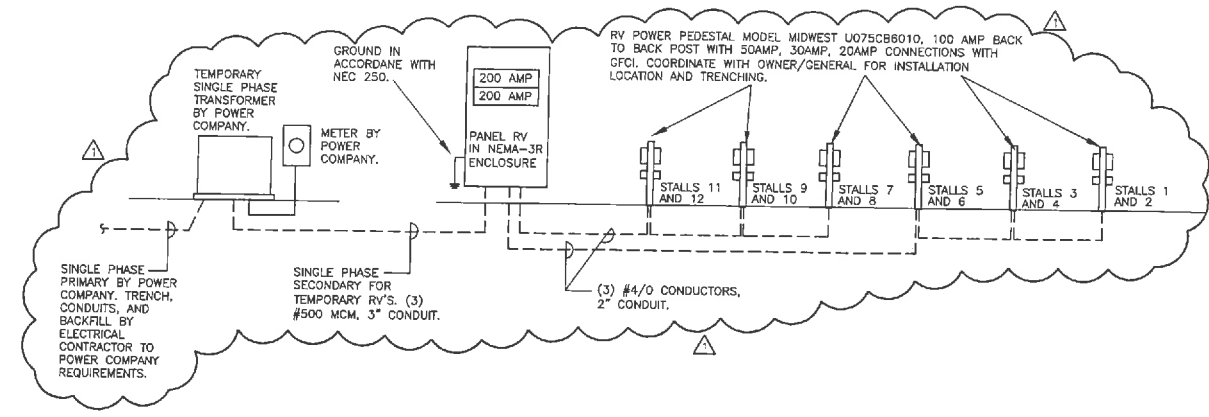
PROJECT TITLE:
JOURNEY CHURCH
 RAPID CITY, SD 57701

SHEET TITLE:
ELECTRICAL SITE PLAN

DES BY: JAS	SHEET:
CK BY: GH	E0.1
DATE: 02-13-2018	
REV: 03-23-2018	
REV:	
SCALE: 1" = 30'-0"	
PROJECT NO:	

1 ELECTRICAL SITE PLAN
 E0.1 SCALE: 1" = 30'-0"
 PLAN NORTH





① ONE-LINE DIAGRAM FOR RV SPOTS
E.1 SCALE: NOT TO SCALE

TEMPORARY RV POWER
DESIGN 3/22/18

MALONE ENGINEERING
ELECTRICAL ELECTRICAL

230 Main Street
Rapid City, SD 57701
Office: (605) 341-6939

101 22nd Ave Suite B
Brookings, SD 57006
Office: (605) 682-9590

SCHLIMGEN DESIGN
CONSULTANTS
INC.

324 St Joseph St Suite 207
Rapid City, SD 57701

605.342.3388 ph
www.schlimgendesign.com

THIS DOCUMENT(S) IS
(ARE) THE PROPERTY OF
SCHLIMGEN DESIGN INC.
AND SHALL NOT BE USED
FOR ANY OTHER PROJECT
FOR ANY REASON
WITHOUT THE WRITTEN
CONSENT OF SCHLIMGEN
DESIGN INC.

PROJECT TITLE:
JOURNEY CHURCH
RAPID CITY, SD 57701

SHEET TITLE:
ELECTRICAL DETAILS

DESIGNED BY: JAL	SHEET: E3.1
CHECKED BY: EEL	
DATE: 02-12-2018	
REV: 01-22-2018	
REV:	
SCALE: NOT TO SCALE	
PROJECT NO:	