

PARCEL NO. 9

PLAT OF LOT PE1





Revised 7/31/15

SHOWING A PERMANENT EASEMENT TO BE ACQUIRED FOR TRANSIT PULLOUT IN LOT 1 IN BLOCK 19 OF WEST BOULEVARD ADDITION TO THE CITY OF RAPID CITY FOR CONSTRUCTION OF PROJECT NO. P 0016(84)67

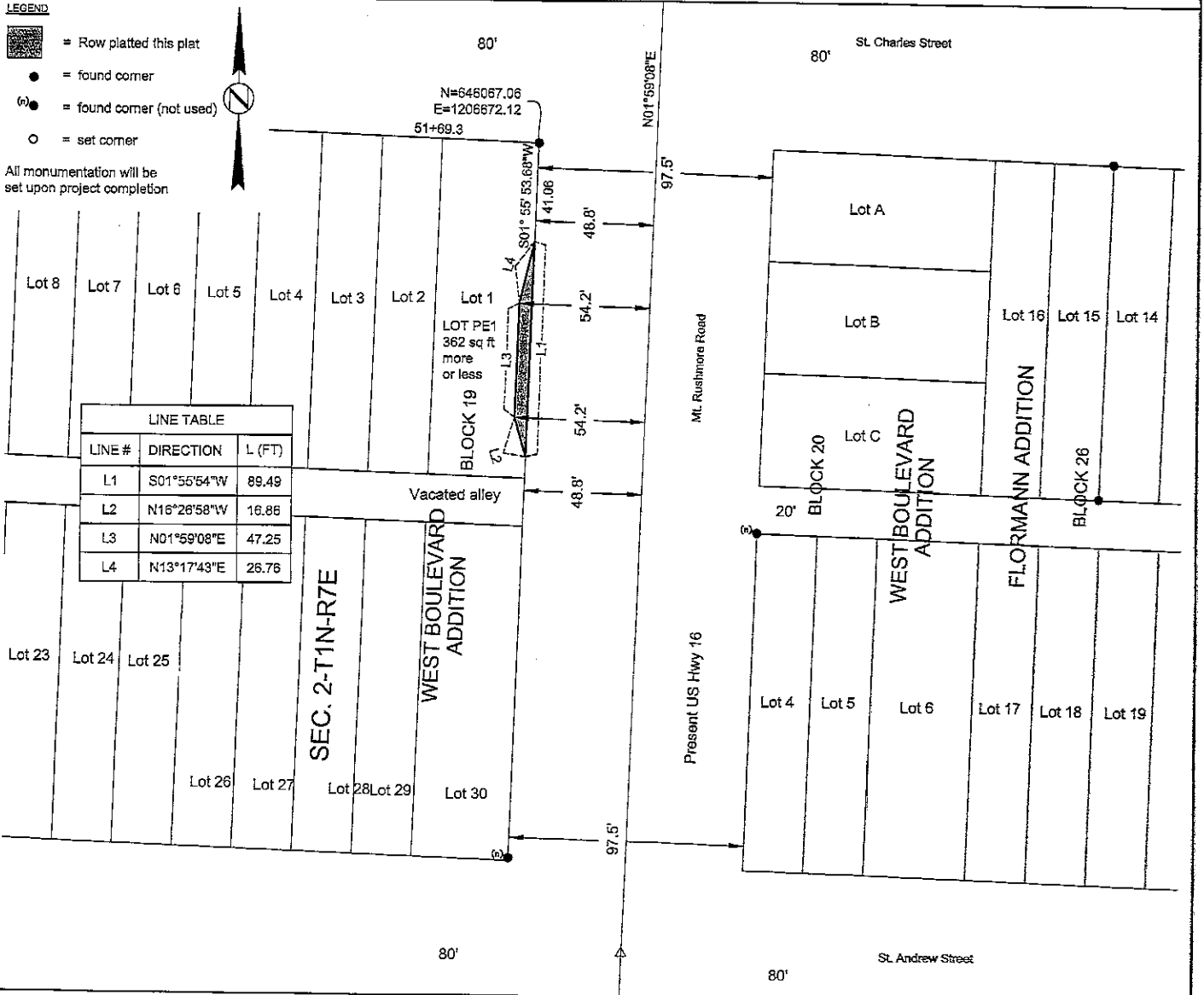
PENNINGTON COUNTY, SOUTH DAKOTA

SCALE: 1 INCH = 50 FEET

LEGEND

-  = Row platted this plat
-  = found corner
-  = found corner (not used)
-  = set corner

All monumentation will be set upon project completion



NOTE 1:
 THE COORDINATES, DISTANCES, AND AREAS SHOWN ON THIS PLAT ARE BASED ON THE SOUTH DAKOTA STATE PLANE COORDINATE SYSTEM SOUTH ZONE NAD83/96 EPOCH 2002.00 GEOID 03 SF=0.999769814

NOTE 2:
 THE BEARING SHOWN WITHIN THE RIGHT OF WAY LINES ON THIS PLAT DENOTE THE CONSTRUCTION SURVEY LINE, WHICH MAY OR MAY NOT BE THE THEORETICAL MIDPOINT BETWEEN THE RIGHT OF WAY LINES OR THE SAME AS THE SECTION LINE WHEN NOTED HEREON.

NOTE 3:
 THE BEST FIT METHOD WAS USED TO ESTABLISH THE EXISTING ROW ALONG MAINLINE MT. RUSHMORE ROAD. FOUND MONUMENTS WERE USED TO ESTABLISH A CONSISTENT LINE. STATED DIMENSIONS ALONG THE CORRIDOR WERE HELD.

DRAWN BY: BRAD HIGBEE DATE: 07-8-15
 CHECKED BY: DAVID MUCK DATE: 07-8-15

SURVEYOR'S CERTIFICATE

I, DAVID M. MUCK, REGISTERED LAND SURVEYOR, NO. 6960 IN AND FOR THE STATE OF SOUTH DAKOTA, DO HEREBY CERTIFY THAT AS ORDERED BY THE SOUTH DAKOTA DEPARTMENT OF TRANSPORTATION THE TRACT OF LAND AS SHOWN ON THIS PLAT HAS BEEN SURVEYED BY THE DEPARTMENT OF TRANSPORTATION AND SUBSEQUENTLY VERIFIED AT MY DIRECTION AND UNDER MY CONTROL, AND SUCH TRACT OF LAND SHALL BE HEREAFTER KNOWN BY THE LOT NUMBER DESIGNATED HEREIN. THE LOCATION AND DIMENSIONS OF THE TRACT ARE SHOWN ON THIS PLAT.

IN WITNESS WHEREOF, I HAVE SET MY HAND AND SEAL THIS _____ DAY OF _____ A.D., 20_____

DAVID M. MUCK
 REGISTERED LAND SURVEYOR LS NO. 6960

OFFICE OF REGISTER OF DEEDS

STATE OF SOUTH DAKOTA
 COUNTY OF PENNINGTON : SS

FILED FOR RECORD THIS _____ DAY OF _____ A.D., 20_____, AT _____ M. DOCUMENT NUMBER _____

REGISTER OF DEEDS

BY _____
 DEPUTY

07-8-15 P:\12-117\AutoCAD\Plats\H-Lot\049F\370249006.dwg