

Case No. 18PL015

Existing Legal Description:

Tract B less Lots 1 and 2 of Rushmore Center, located in Section 30, T2N, R8E, BHM, Rapid City, Pennington County, South Dakota

Proposed Legal Description:

Proposed Lots 3, 4 & 5 of Tract B of Rushmore Center

RUSHMORE CENTER SUBDIVISION

PRELIMINARY SUBDIVISION PLAN LOTS 3, 4, & 5 OF TRACT B, RUSHMORE CENTER SUBDIVISION, LOCATED IN SECTION 30, T2N, R8E, BHM RAPID CITY, SOUTH DAKOTA KTM JOB NUMBER: 07-0485

PROJECT LOCATION
LOCATED IN THE SE ¼ SECTION 30
TOWNSHIP 2 NORTH, RANGE 8 EAST,
BLACK HILLS MERIDIAN,
RAPID CITY, SOUTH DAKOTA

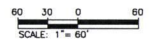
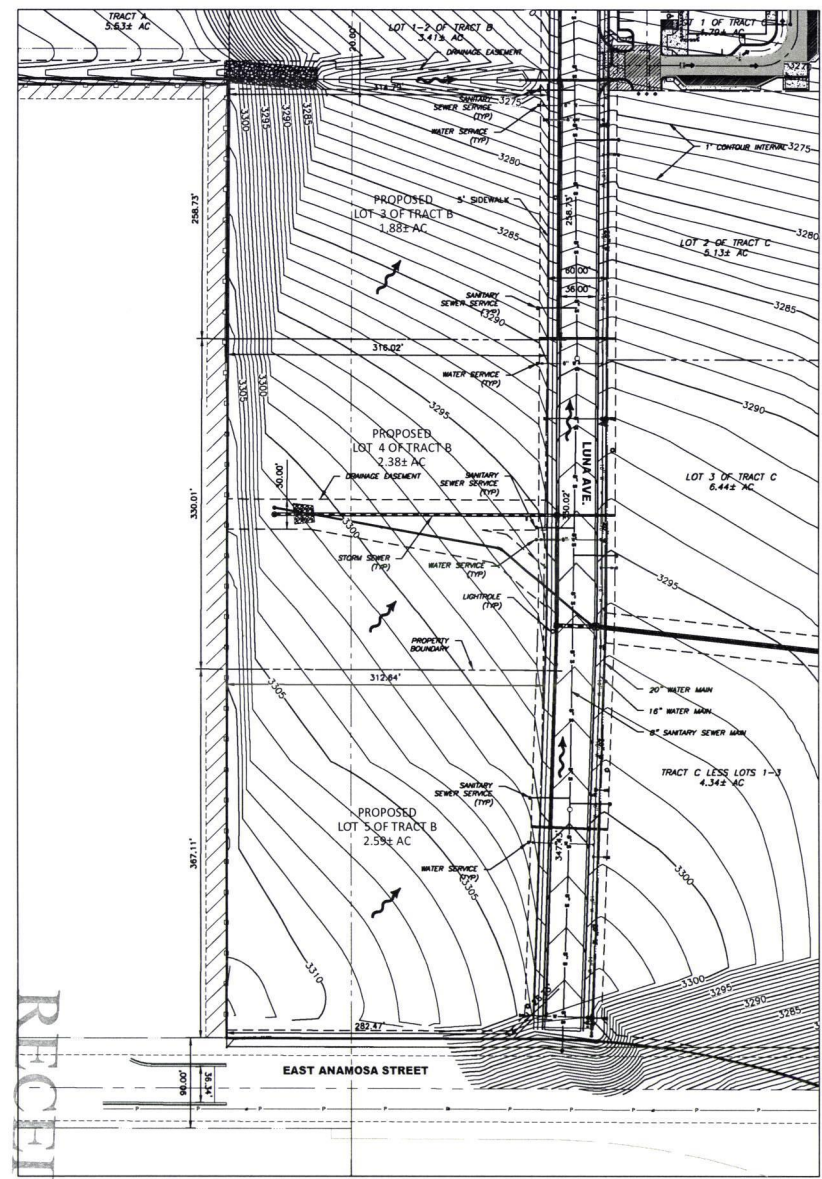


PROJECT LOCATION MAP NOT TO SCALE

RAPID CITY DEPARTMENT OF
COMMUNITY DEVELOPMENT

MAR 09 2018

RECEIVED



03/2018 PRELIMINARY SUBDIVISION PLAN			
Internal Job No:	Designed By:	Drawn By:	
KTM 0485	KVT	KVT	
Surveyed By:	Survey Date:		
RENNER	02/12/2007		

PRELIMINARY FOR REVIEW ONLY

528 Kansas City St., Rapid City, SD 57701
[p] 605.791.5866 | [f] 605.791.5863
www.ktmdesignsolutions.com
CIVIL ENGINEERING | LAND PLANNING
CONSTRUCTION ADMINISTRATION



RUSHMORE CENTER SUBDIVISION
RAPID CITY, SOUTH DAKOTA

Sheet Name

TITLE

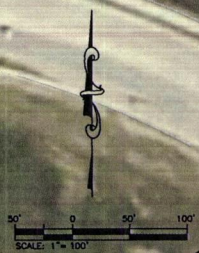
Sheet Number

MAR 09 2018

RAPID CITY DEPARTMENT OF
COMMUNITY DEVELOPMENT



PRELIMINARY
FOR REVIEW ONLY



KTM
DESIGN SOLUTIONS, INC.

528 Kansas City St
Rapid City, SD 57701
[p] 605.791.5866
[f] 605.791.5863
[e] engineers@ktmddi.com

CIVIL ENGINEERING | LAND PLANNING | CONSTRUCTION ADMINISTRATION
www.ktmdesignsolutions.com

MASTER AND PHASING PLAN
RUSHMORE CENTER
RAPID CITY, SOUTH DAKOTA
MARCH 9, 2018

X:\450-499\485\Drawings\Sheets\Preliminary Subdivision Plan\MASTERPLAN.dwg 3/9/2018 9:42am

18PL015

MERIDIAN LN

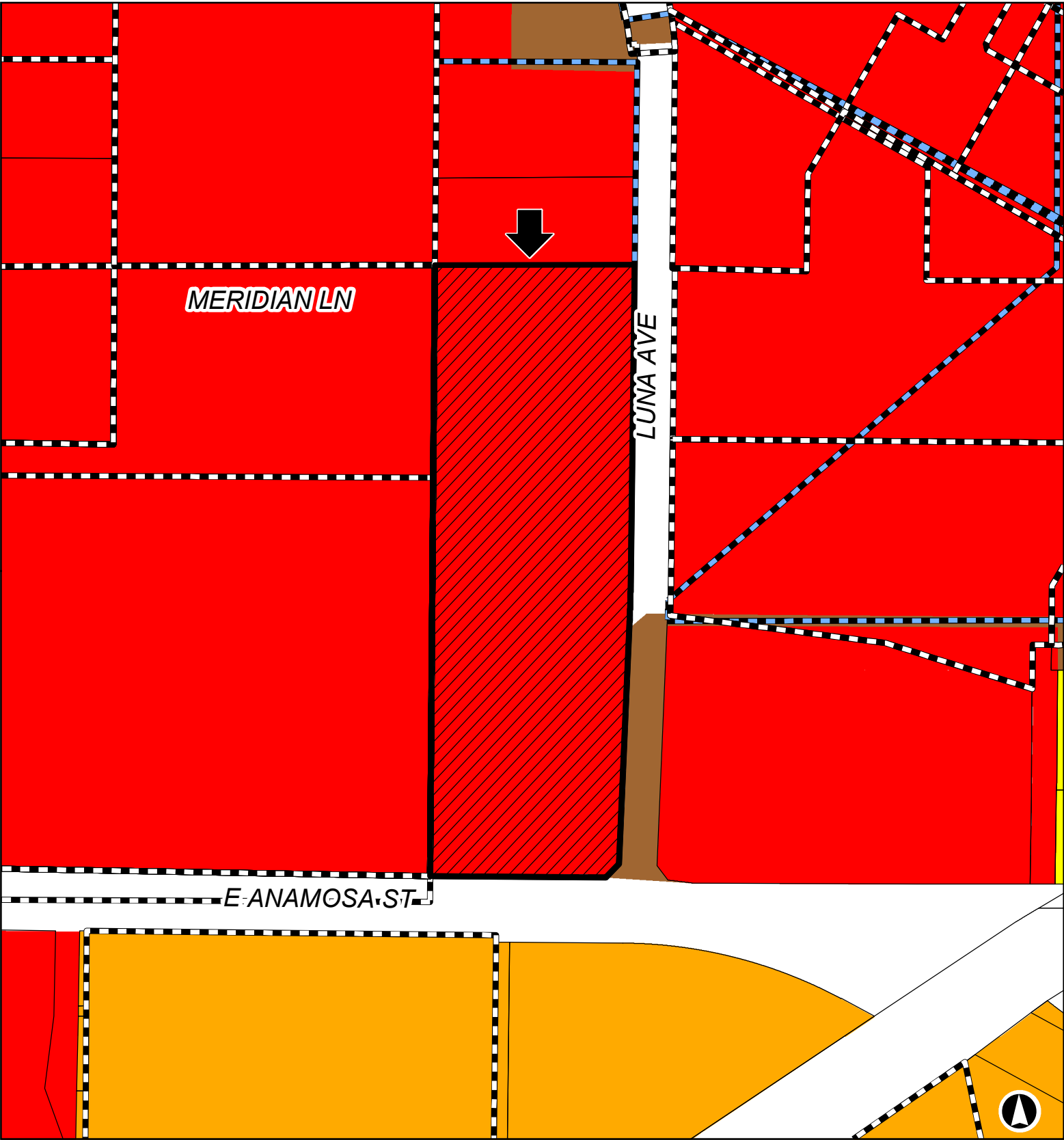
LUNA AVE

E ANAMOSA ST











18PL015

NW of the intersection of Anamosa Street and Luna Avenue

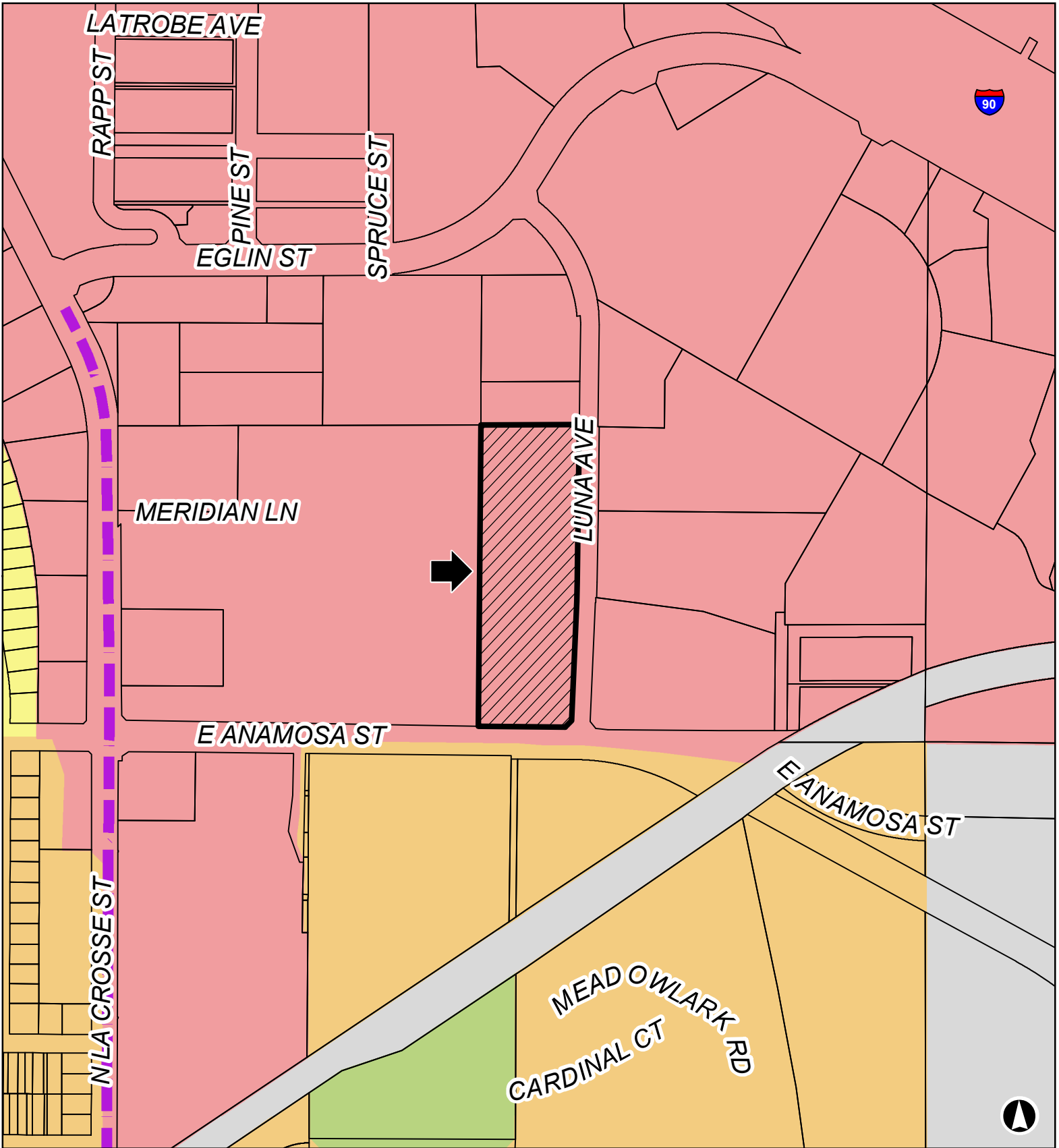


Rapid City Zoning

-  Subject Property
-  General Agriculture
-  Medium Density Residential
-  Planned Development
-  General Commercial
-  Low Density Residential-1
-  Planned Development Designation
-  No Code

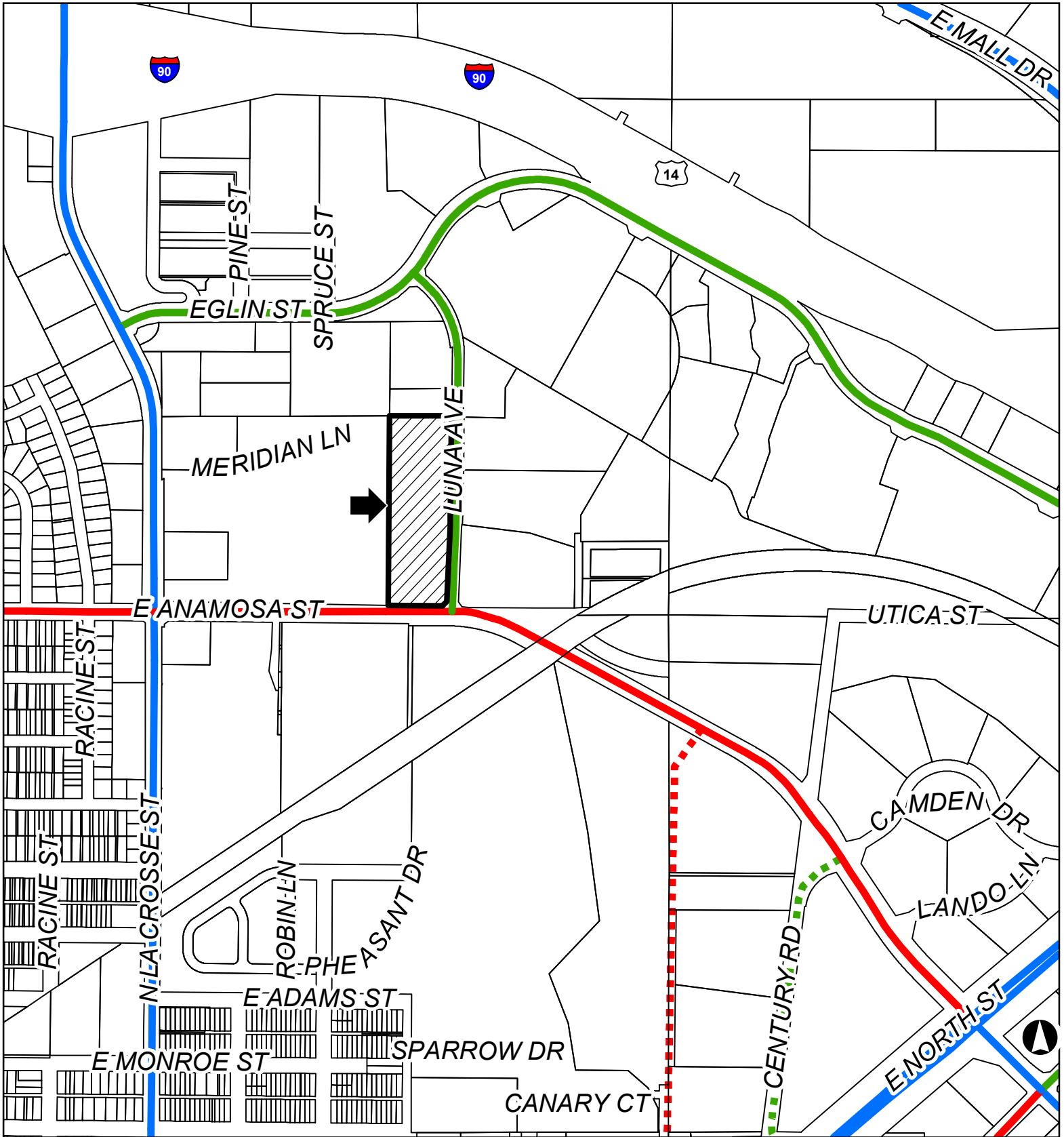
18PL015

NW of the intersection of Anamosa Street and Luna Avenue








Future Land Use Categories

- Subject Property
- Low Density Neighborhood
- Mixed Use Commercial
- Parks and Greenway
- Revitalization Corridor
- Urban Neighborhood
- Light Industrial



Major Street Plan

-  Subject Property
-  Collector
-  Principal arterial
-  Proposed minor arterial
-  Minor arterial
-  Proposed collector

18PL015

