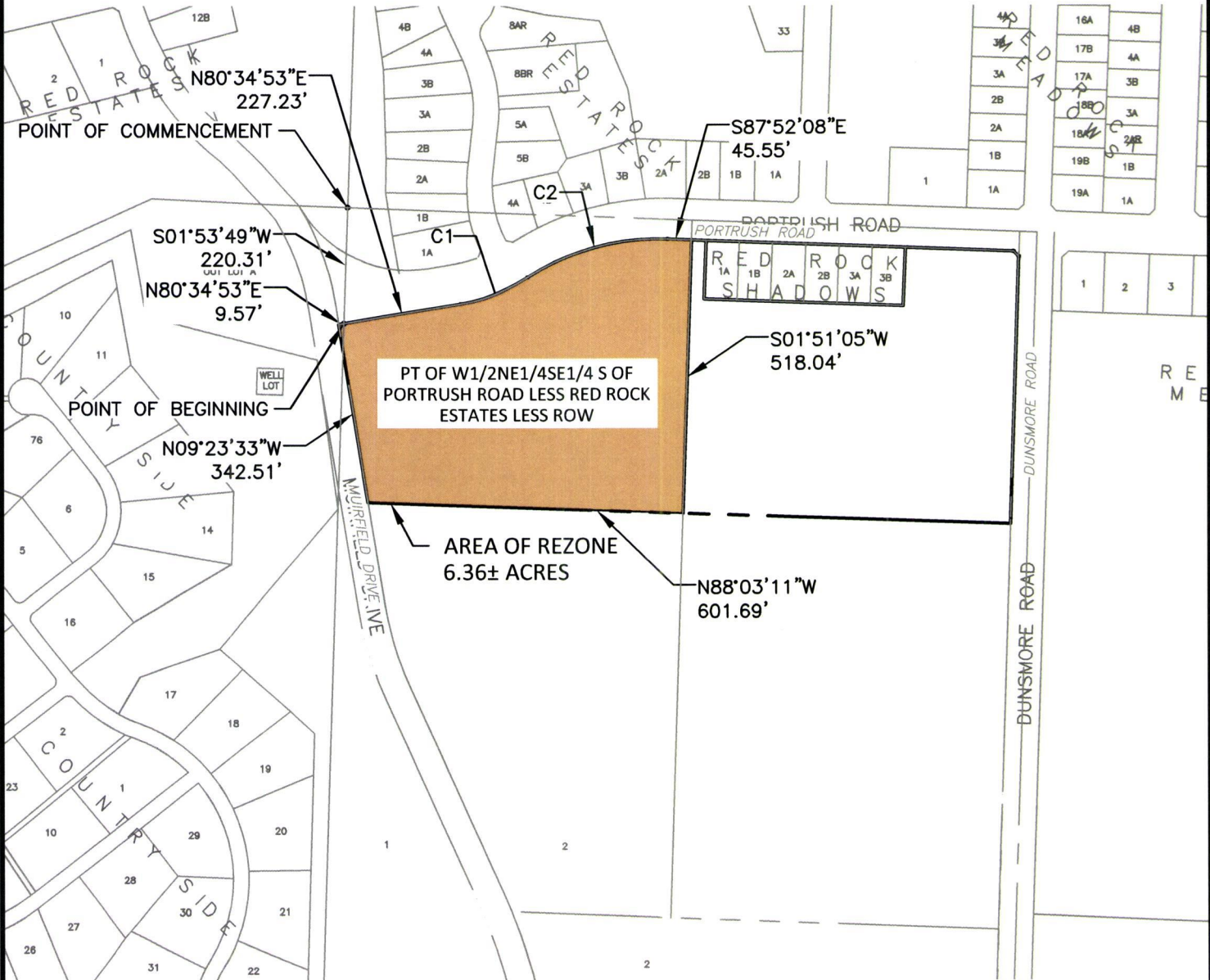


Case No. 17RZ029

Legal Description:

That portion of W1/2NE1/4SE1/4 of Portrush Road; less Red Rock Estates less row; all located in Section 29, T1N, R7E, BHM, Rapid City, Pennington County, South Dakota. More fully described as follows: Commencing at the NW Corner of that part of W1/2NE1/4SE1/4 located N of Portrush Rd Less Red Rock Estates And Less ROW, located in Section 29, T1N, R7E, BHM, Rapid City, Pennington County, South Dakota; thence S01°53'49"W, a distance of 220.31 feet, to the point of beginning; Thence first course: N80°34'53"E, a distance of 227.23 feet; Thence second course: on a curve turning to the left with an arc length of 137.68 feet, with a radius of 337.92 feet, with a chord bearing of N68°54'35"E, with a chord length of 136.73 feet; Thence third course: on a curve turning to the right with an arc length of 281.44 feet, with a radius of 461.88 feet, with a chord bearing of N74°41'40"E, with a chord length of 277.11 feet; Thence fourth course: S87°52'08"E, a distance of 45.55 feet; Thence fifth course: S01°51'05"W, a distance of 518.04 feet; Thence sixth course: N88°03'11"W, a distance of 601.69 feet; Thence seventh course: N09°23'33"W, a distance of 342.51 feet; Thence eighth course: N80°34'53"E, a distance of 9.57 feet, to the point of beginning

REZONE EXHIBIT
NO USE TO MEDIUM DENSITY RESIDENTIAL
 THAT PORTION OF W1/2NE1/4SE1/4 S OF PORTRUSH ROAD
 LESS RED ROCK ESTATES LESS ROW
 LOCATED IN SECTION 29, T1N, R7E, BHM
 PENNINGTON COUNTY, SOUTH DAKOTA



CURVE TABLE					
CURVE	LENGTH	RADIUS	DELTA	CHORD BEARING	CHORD DISTANCE
C1	137.68	337.92	023°20'38"	N68°54'35"E	136.73
C2	281.44	461.88	034°54'45"	N74°41'40"E	277.11

RECEIVED

SEP 21 2017

**RAPID CITY COMMUNITY PLANNING
& DEVELOPMENT SERVICES**

KTM
 DESIGN SOLUTIONS, INC.
 528 Kansas City St
 Rapid City, SD 57701
 [p] 605.791.5866
 [f] 605.791.5863
 [e] engineers@ktmidsi.com

CIVIL ENGINEERING | LAND PLANNING | CONSTRUCTION ADMINISTRATION
 www.ktmidsolutions.com

**PRELIMINARY
FOR REVIEW ONLY**

