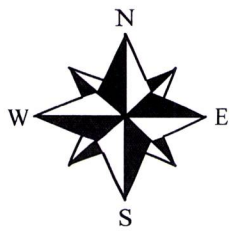


Case No. 17VR007

Legal Description:

Lot 5R of Block 6 of Radio Towers Subdivision, located in the SE1/4 of the SE1/4 of Section 6, T1N, R8E, BHM, Rapid City, Pennington County, South Dakota



1" = 30 Feet
August 2017

"EXHIBIT A"

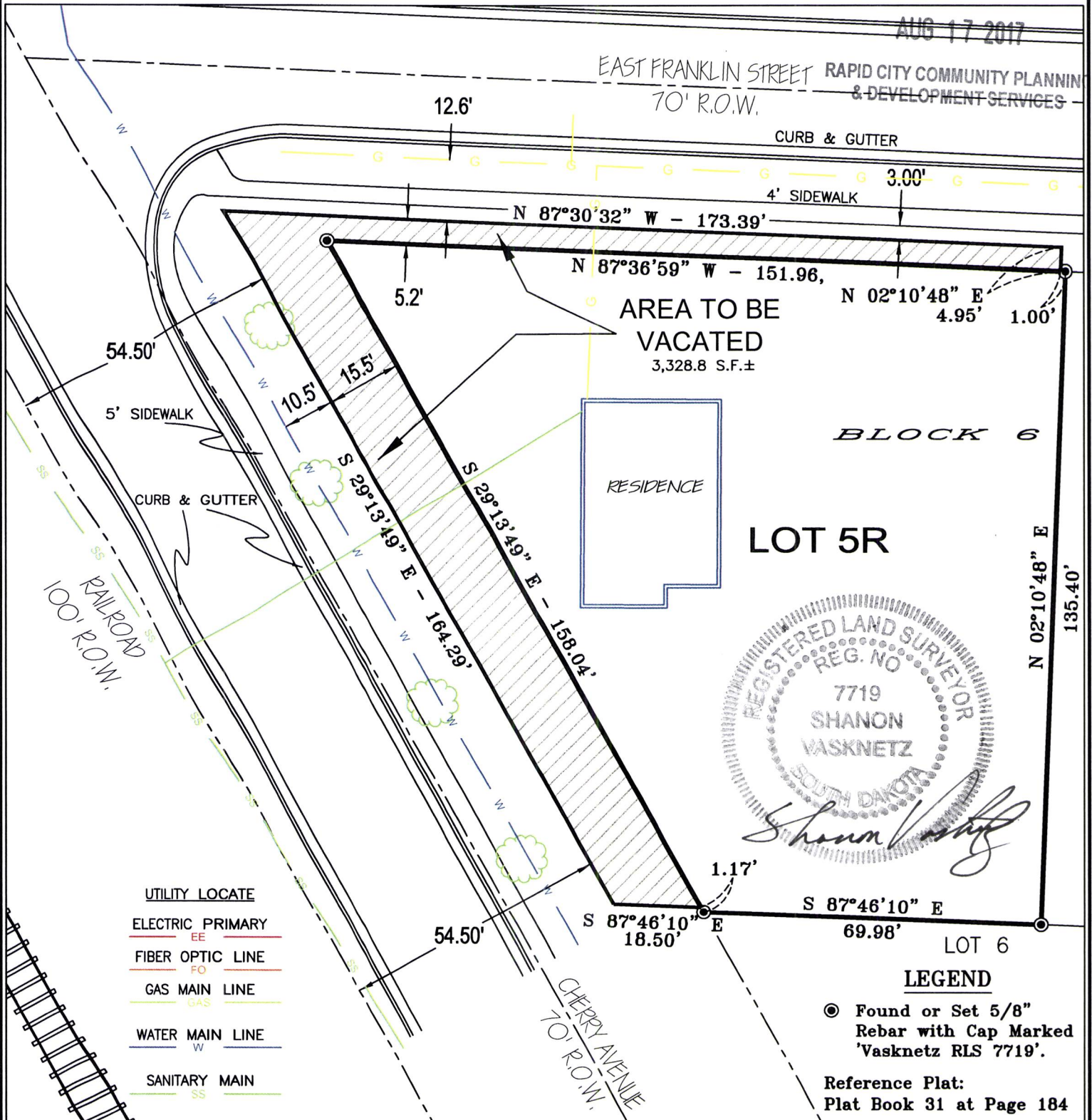
Road Right-Of-Way Vacation

Lot 5R, Block 6 of Radio Towers Subdivision.

Located in the SE 1/4 of the SE1/4 of Section 6, T.1N., R.8E.,
B.H.M., City of Rapid City, Pennington County, South Dakota.

RECEIVED

AUG 17 2017



PREPARED BY: Baseline Surveying Inc.

1921 Lazelle Street, Sturgis, SD 57785 Phone (605) 490-1401

Job No. 17-138