

Case No. 17PD023

Legal Description:

Lot 6 of Block 3 of Rushmore Crossing, located in Section 29, T2N, R8E, BHM, Rapid City, Pennington County, South Dakota

RECEIVED



Scale: AS NOTED
Designed By: STORDC
Drawn By: JID
Design Date: Filed Date:
Internal Job No.: 00-000
Surveyed By: ARLETH
Survey Date:
Issued For BID: 7-18-07

RUSHMORE CROSSING
SITE PLANS

Sheet Title:
SITE PLAN
AND
SIGNAGE & STRIPING

RUSHMORE
CROSSING
SHOPPING
CENTER

MATCHLINE - SEE SHEET 10

P-13
7,500 SF

P-14
18,300 SF

P-15
21,360 SF

P-16
15,430 SF

P-17
7,172 SF

P-18
5,662 SF
BOLLARD (TYP.)

P-19
6,000 SF

P-20
8,578 SF

P-21
14,027 SF

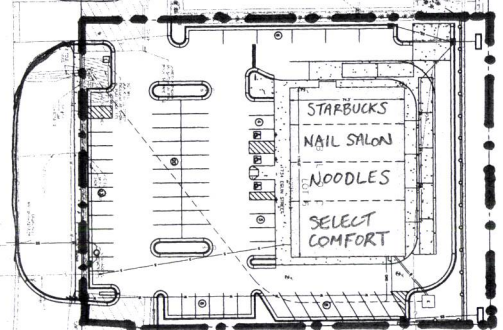
P-22
10,069 SF

MATCHLINE - SHEET 12

PARKING CALCULATION - OP16

Tenant	SIZE (SF)	2.6x	3.0x # of chairs	11.0x	
Starbucks	1,800			20	Coffee Shop
Starbucks Patio	146			2	Coffee Shop
Proposed Nail Salon	1,202		36		12 chairs
Noodles	2,544			28	Restaurant
Select Comfort	2,550				Furniture
Subtotal	8,242	7	36	49	
Total				92	
Parking Stalls Provided based on areas above				52	
Over/(Under - Employee parking to be provided at Shopping Center)				(30)	

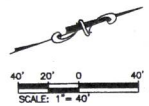
EGLIN STREET



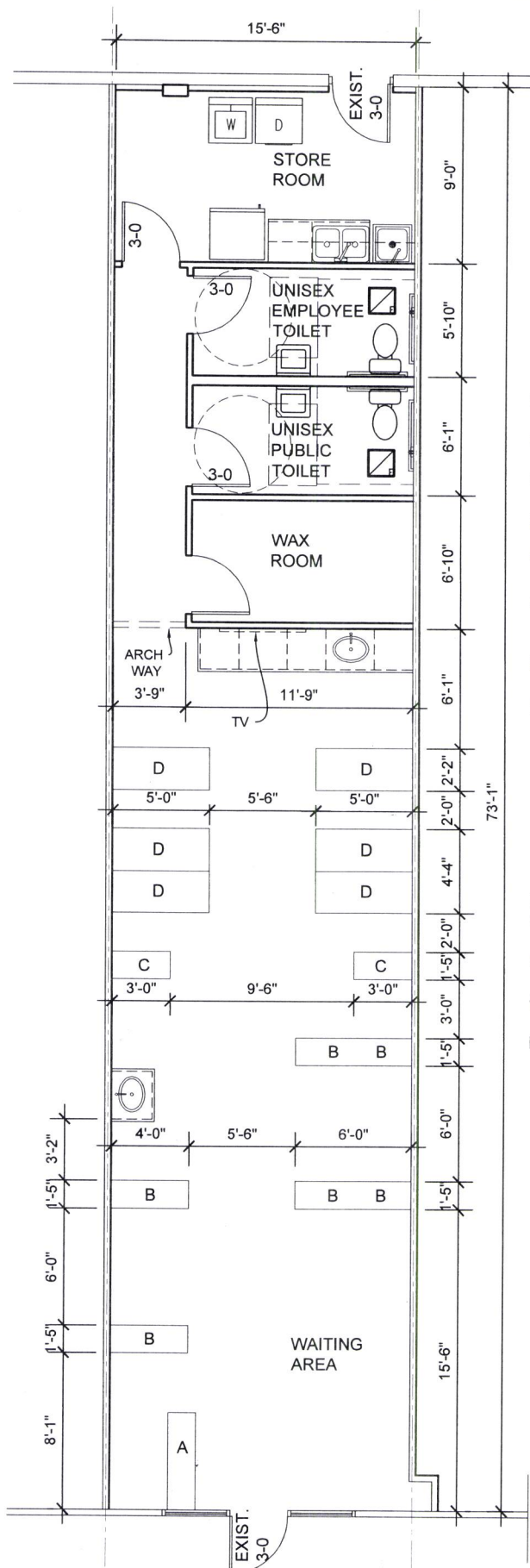
OP16

[Hatched Box] = Location of 30 EXTRA SPACES IN SHOPPING CENTER FOR EMPLOYEE PARKING
TYPICAL WIDE HANDICAP RAMP
NOT TO SCALE

NOTES:
ALL T.B.C. RAMP ARE 3.0' UNLESS OTHERWISE NOTED.
ALL CURB RAMP ARE TO T.B.C.
ALL PARKING STALL STRIPING SHALL BE 4" WHITE UNLESS OTHERWISE NOTED.
REFER TO EGIN STREET PLANSET FOR SIGNAGE WITHIN EGIN STREET R.O.W.
ALL SIDEWALK RAMP ARE 4" IN WIDTH WITH 2" WIDE TAPER UNLESS OTHERWISE NOTED.
ALL RAMP CONFORMED IN CIRCULAR SIDEWALK ARE PER STANDARD DETAIL 811-3 OF THE CITY OF BIRMINGHAM CITY STANDARD SPECIFICATIONS, 2004 EDITION.
SEE SHEET 84 FOR TRUCK ACCESS EASEMENT AREA.
GENERAL CONTRACTOR TO PROVIDE TEMPORARY IF CHANGING FRODOG AROUND PERIMETER OF PHASE I (APPROXIMATE).
SEE SHEETS 79 & 80 FOR SIGN DETAILS.



CONCRETE AREA
HEAVY DUTY ASPHALT PAVEMENT
PHASE I / PHASE II BOUNDARY



BUILDING TYPE	II-B
OCCUPANCY TYPE	M
FIRE PROTECTION	SPRINKLED
TENANT SPACE SF	1175 SF
OCCUPANCY LOAD	16 ((680/60)+(420/100))
EXITS (REQ'D/PROVD)	1 / 1
PLUMBING FIXTURES	1 UNISEX SPACE LESS THAN 1500 SF

A (1) RECEPTION DECK
B (6) MANICURE CHAIRS
C (2) TALL CABINETS
D (6) PEDICURE CHAIRS

D NAILS
RUSHMORE CROSSINGS
RAPID CITY, SD

FLOOR PLAN

SHEET DATE: 5.9.17

PROJECT NO: 1711

A1

SCALE: AS NOTED
PROJECT DATE: 4.26.17
SHEET SIZE: 11" X 17"

FLOOR PLAN

SCALE: 3/16" = 1'-0"

RAPID CITY COMMUNITY PLANNING
& DEVELOPMENT SERVICES

RECEIVED
MAY 12 2017