

Case No. 17PL037

Existing Legal Description:

Lot 2 of Stoney Creek South No.2 Subdivision, located in Section 22, T1N, R7E, BHM,
Rapid City, Pennington County, South Dakota

Proposed Legal Description:

Proposed Lot A, B, C and D of Stoney Creek South No. 2 Subdivision

X:\800-849\820 Nugget Gulch Townhomes\Drawings\TRANSFER IN\StoneyRidgeSouth4.6.17MASTERPLAN.dwg 4/7/2017 9:19am





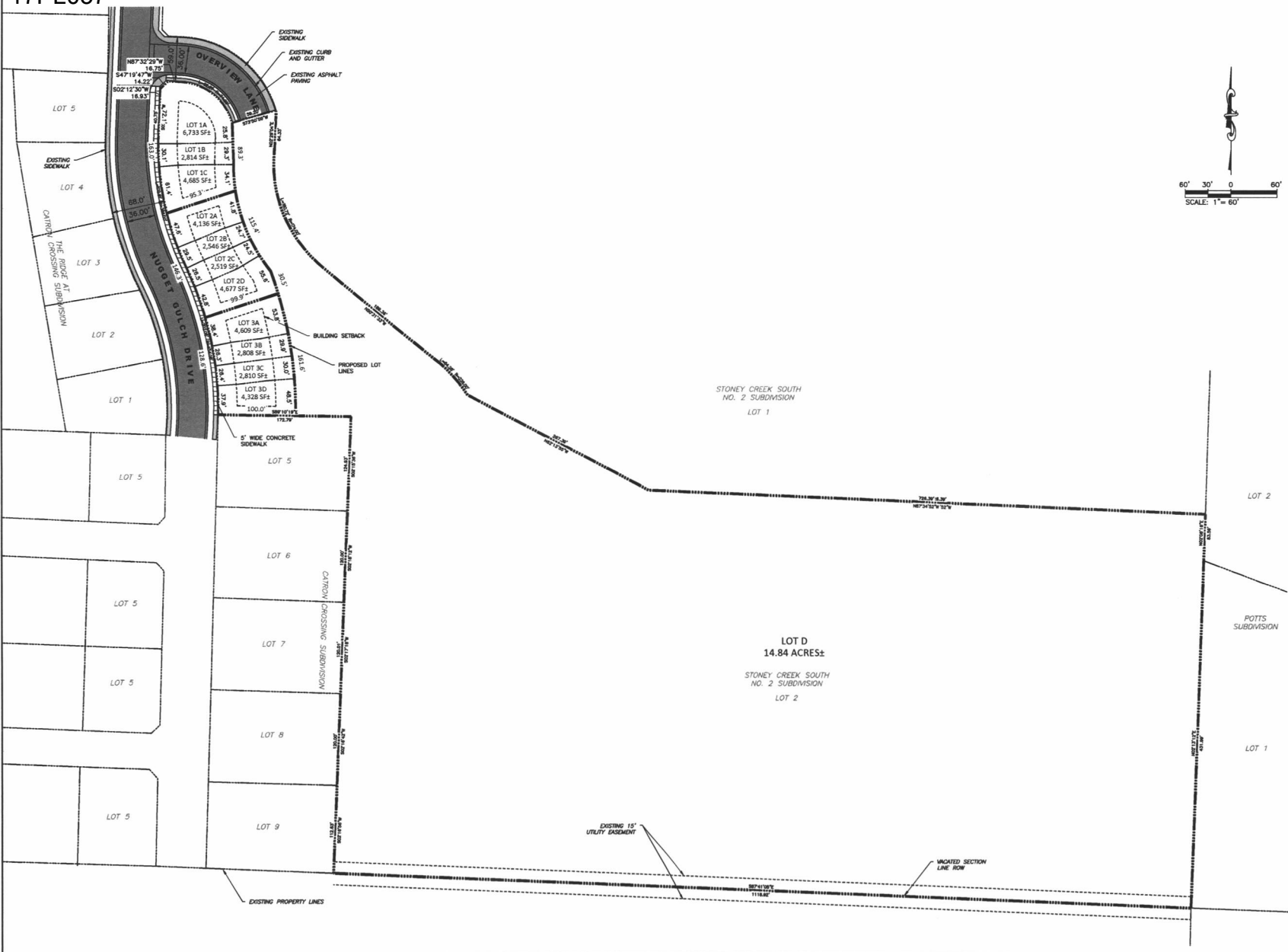
528 Kansas City St
Rapid City, SD 57701
[p] 605.791.5866
[f] 605.791.5863
[e] engineers@ktmcsi.com

CIVIL ENGINEERING | LAND PLANNING | CONSTRUCTION ADMINISTRATION

www.ktmdesignsolutions.com

STONEY CREEK SOUTH NO. 2
MASTER PLAN
RAPID CITY, SOUTH DAKOTA
APRIL 7, 2017

**PRELIMINARY
FOR REVIEW ONLY**



Submitted: 04/08/17. PRELIMINARY SUBDIVISION PLAN.

Revisions:

Internal Job No:	Designed By:	Drawn By:
KTM #16-0920 KVT	KVT	KVT
Surveyed By:	Survey Date:	
XXXXXXXXXX	8/1/2017	

PRELIMINARY FOR REVIEW ONLY

KTM
 DESIGN SOLUTIONS, INC.
 528 Kansas City St., Rapid City, SD 57701
 [p] 605.791.5866 | [f] 605.791.5863
www.ktmdesignsolutions.com
 CIVIL ENGINEERING | LAND PLANNING
 CONSTRUCTION ADMINISTRATION

STONEY CREEK SOUTH NO. 2 SUBDIVISION
 RAPID CITY, SOUTH DAKOTA

Sheet Name:

SITE LAYOUT

Sheet Number:
2 OF 4

X:\360-4493\200 Nagel - South Townhomes\Drawings\TRANSFER IN\PSD PLAN - 17PL037.dwg 4/10/2017 12:10pm