

Case No. 16PL130

**Existing Legal Description:**

That portion of Lot 2 of Government Lot 1 lying east of Highway 79; Lot AB-1 of Government Lot 1; Lot AB-2 of Government Lot 1, located in Section 5, T1S, R8E, BHM, Pennington County, South Dakota

**Proposed Legal Description:**

Lot A of Patrick Foley Addition

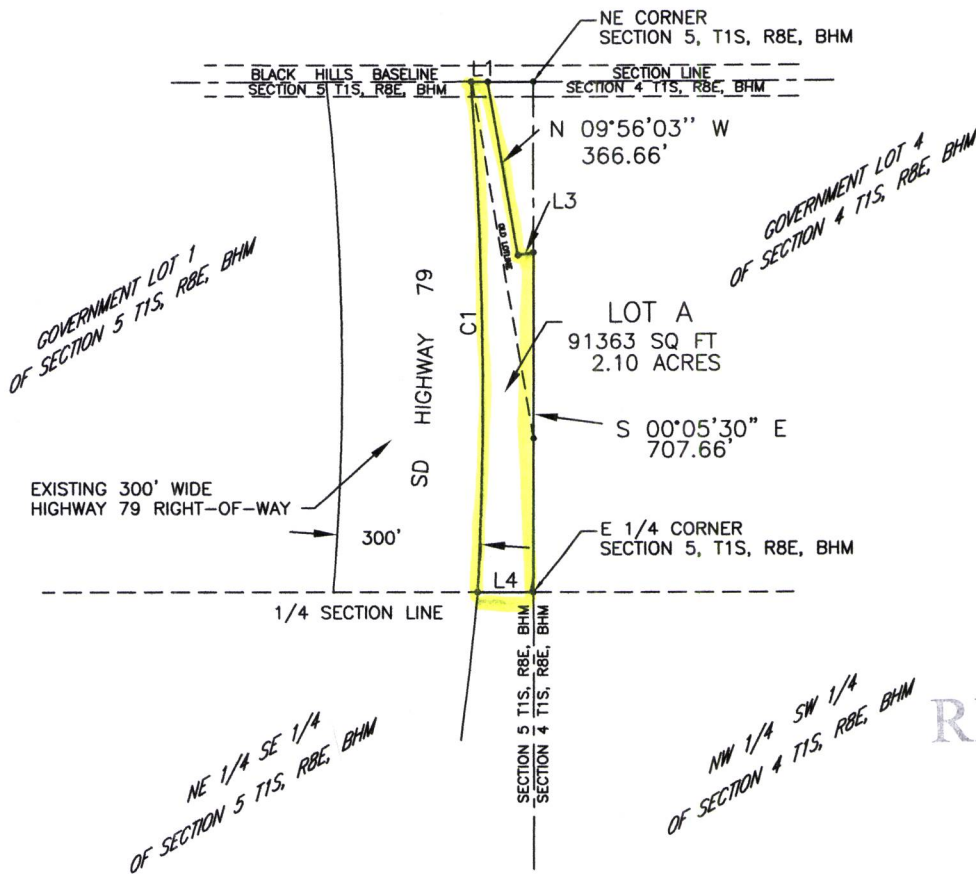


## PLAT OF LOT A OF PATRICK FOLEY ADDITION

FORMERLY LOT AB-1, LOT AB-2, AND GOVERNMENT LOT 1 ON THE EAST  
SIDE OF SOUTH DAKOTA HIGHWAY 79 OF SECTION 5  
TOWNSHIP 1 SOUTH, RANGE 8 EAST, OF THE BLACK HILLS MERIDAN  
PENNINGTON COUNTY, SOUTH DAKOTA.



SCALE: 1"=400'  
NOVEMBER 29, 2016



## LEGEND

- FOUND REBAR
- FOUND 5/8 REBAR WITH CAP MARKED "DAVIS ENG. 3095"
- SET 5/8 REBAR WITH CAP MARKED "DAVIS ENG. 3095"

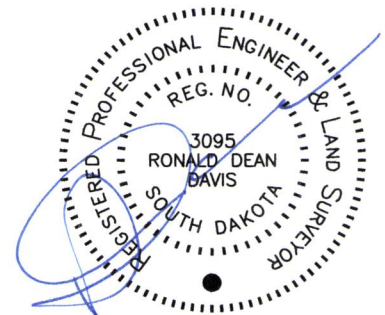
RECEIVED

NOV 30 2016

RAPID CITY COMMUNITY PLANNING  
& DEVELOPMENT SERVICES

NUMBER	DIRECTION	DISTANCE
L1	N 89°55'17" E	35.07'
L2	S 89°55'17" E	95.20'
L3	S 80°03'58" W	33.00'
L4	N 90°00'00" E	117.32'

NUMBER	DELTA ANGLE	CHORD DIRECTION	TANGENT	RADIUS	ARC LENGTH	CHORD LENGTH
C1	10°29'40"	S 00°47'23" E	533.87	5813.15	1064.76	1063.27

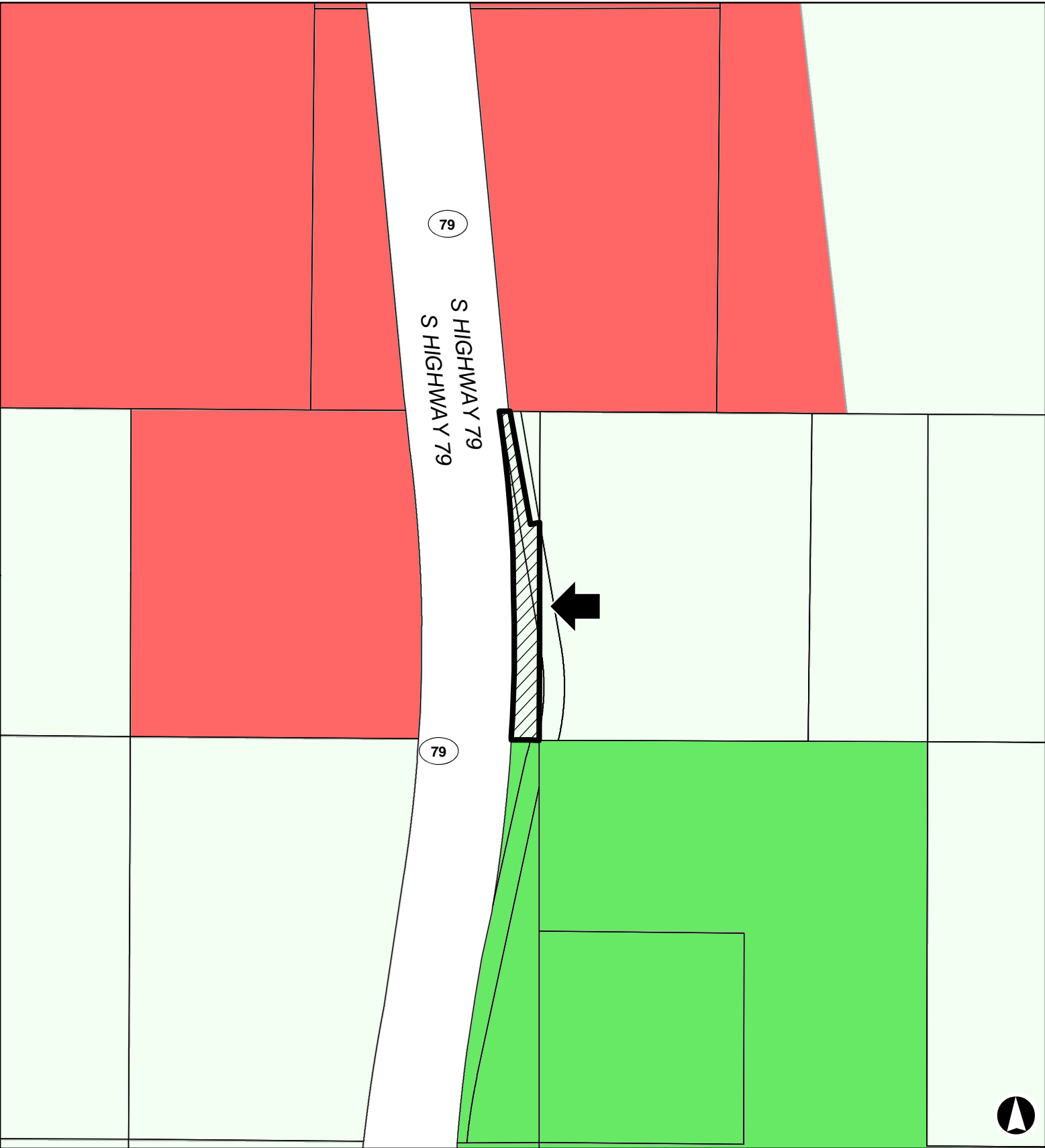


PREPARED BY:



16PL130

East side of Highway 79, 2.5 miles south of RC Landfill



**Rapid City/Pennington County Zoning**

 Subject Property  General Commercial, PC  General Ag. District, PC  Limited Ag., PC



16PL130

79

S HIGHWAY 79

79

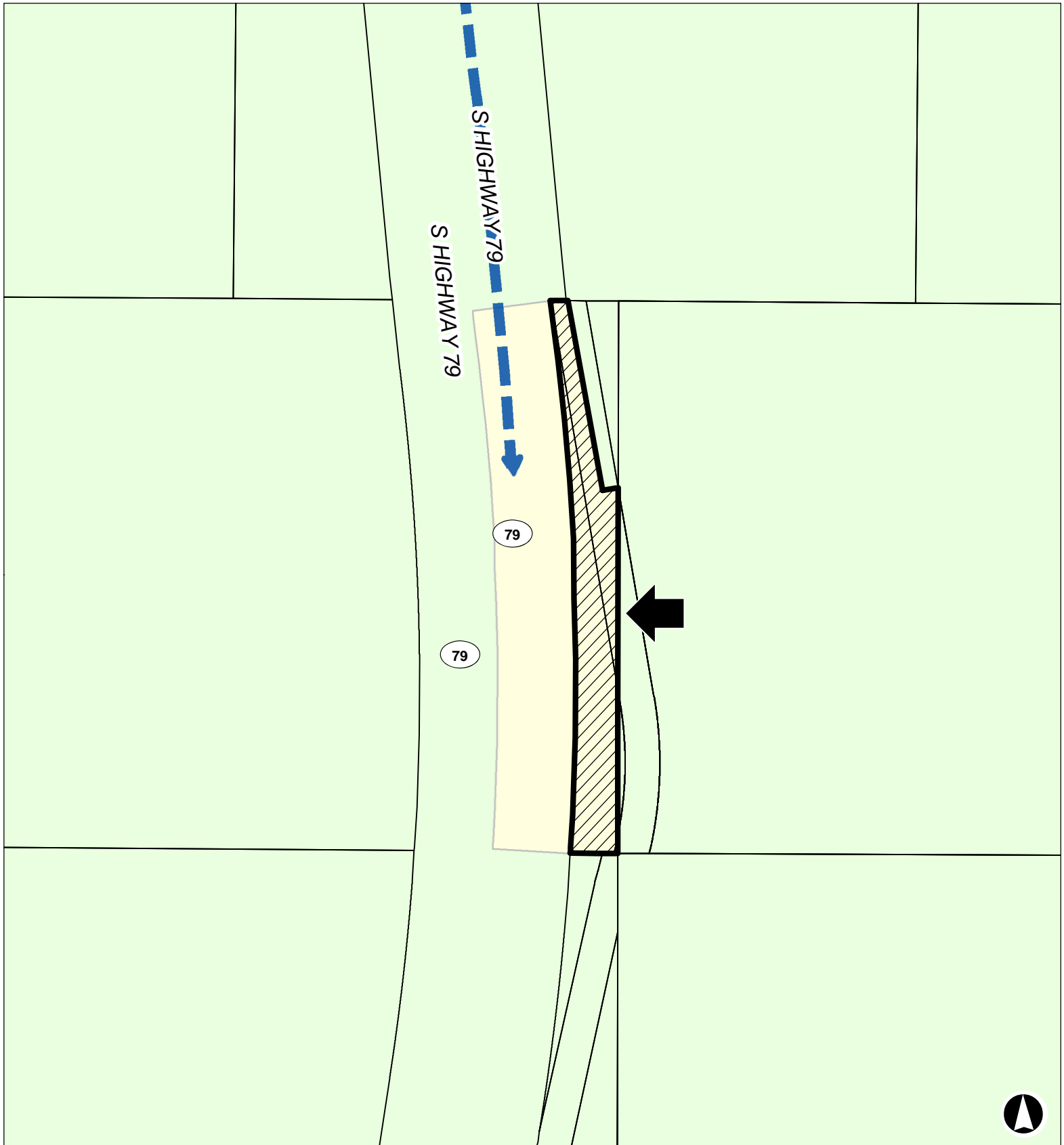
S HIGHWAY 79





16PL130

East side of Highway 79, 2.5 miles south of RC Landfill



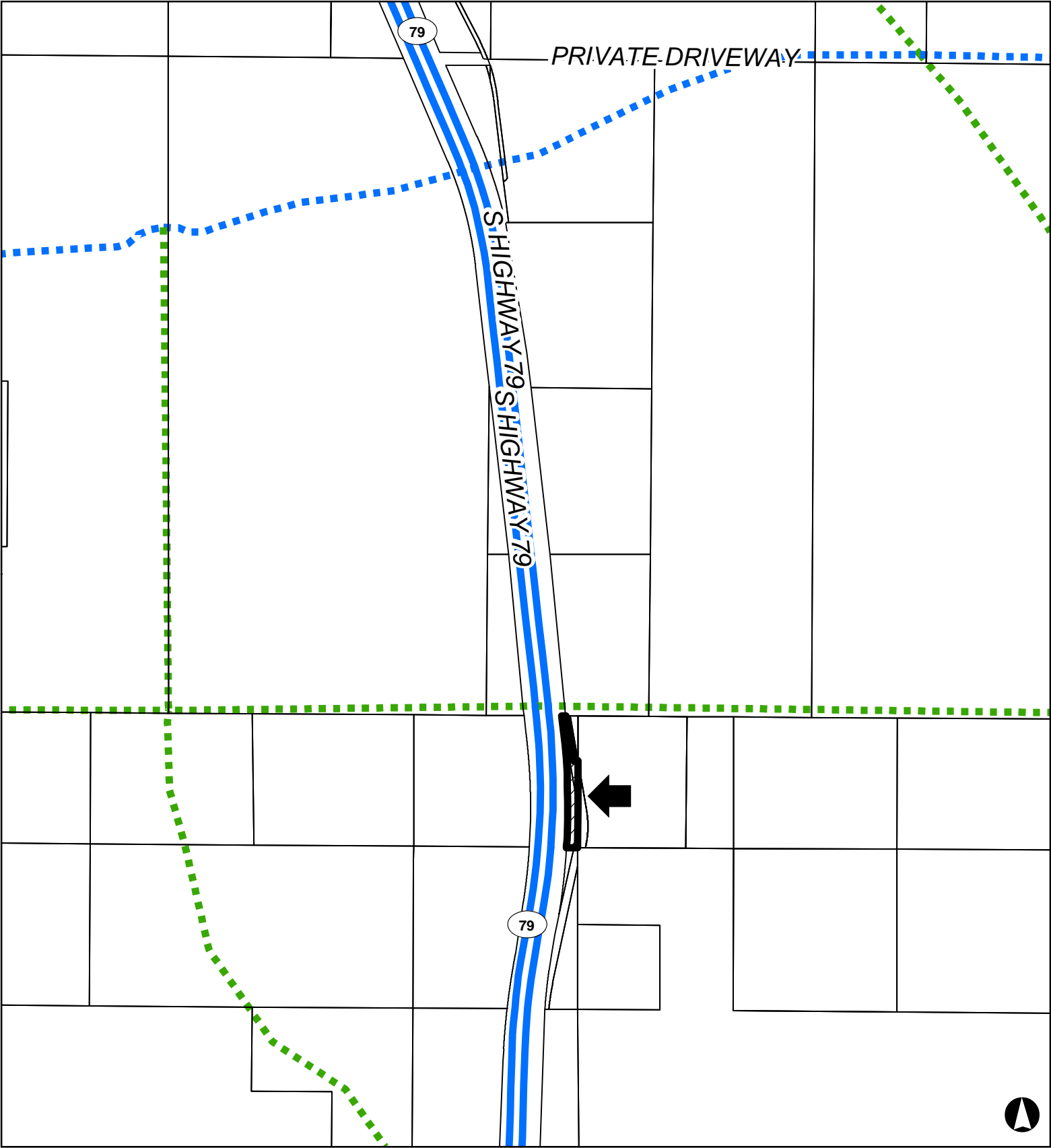
### Future Land Use Categories

 Subject Property  Entrance Corridor  Rural Residential  Agriculture



16PL130

East side of Highway 79, 2.5 miles south of RC Landfill



Major Street Plan

 Subject Property  Principal arterial  Proposed collector  Proposed principal arterial



16PL130

