

Case No. 21PL106

**Existing Legal Description:**

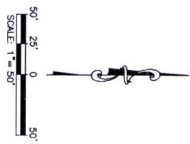
A portion of the NW1/2 of the NW1/4 less Elks Crossing, located in Section 21, T1N, R8E, BHM, Pennington County, South Dakota

**Proposed Legal Description:**

Proposed Lot 2 and 3 of Block 13, Lots 8 thru 14 of Block 14, Lots 8 thru 13 of Block 15, Lots 1 thru 7 of Block 18, Lot 1 and Lot 2 of Block 19 of Elks Crossing

51/2001/ANN1/4

51/2001/ANN1/4



628 1/2 6th Street, Suite 201, Rapid City, SD 57701  
Phone: (605) 791-5866 | Fax: (605) 791-5863  
www.ktmdesignsolutions.com  
CIVIL ENGINEERING | LAND SURVEYING  
LAND PLANNING | PROJECT MANAGEMENT  
CONSTRUCTION ADMINISTRATION

ELKS CROSSING - PHASE 6  
PRELIMINARY SUBDIVISION PLAN  
RAPID CITY, SOUTH DAKOTA

PRELIMINARY  
FOR REVIEW ONLY

Drawn and Noted: Christopher B. [Signature]  
Checked By: [Signature]  
Reviewed By: [Signature]  
City Design Solutions, Inc.



PHASE 4  
COMPLETED

CAKEBREAD CT.

E. MINNESOTA STREET

MOSATO CT.

PHASE 5  
COMPLETED

ELKS  
CROSSING

CAYMUS DRIVE

PAPILLON DRIVE

FUTURE

PAHLMEYER DRIVE

LOT 3 LOT 2  
BLOCK 13

LOT 8 LOT 9  
BLOCK 14

PHASE 6

COURT A

LOT 9 LOT 10  
LOT 8 LOT 11  
LOT 13 LOT 12  
BLOCK 15

LOT 2 LOT 1  
BLOCK 19

LOT 7 LOT 6  
BLOCK 18

LOT 5 LOT 4 LOT 3 LOT 2 LOT 1  
BLOCK 18

**LEGEND**

PHASE 4 [dashed line]

PHASE 5 [dashed line]

PHASE 6 [solid line]

FUTURE [dashed line]

60' 50' 0 100' 200'

SCALE: 1" = 200'

PRELIMINARY  
FOR REVIEW ONLY

ELKS CROSSING - PHASE 6  
MASTER AND PHASING PLAN  
RAPID CITY, SOUTH DAKOTA



21PL106

CAKEBREAD CT

PAHLMAYER DR

CAYMUS DR

PAPILLON DR

FIELDSTONE DR

E DUCKHORN ST

E MINNESOTA ST

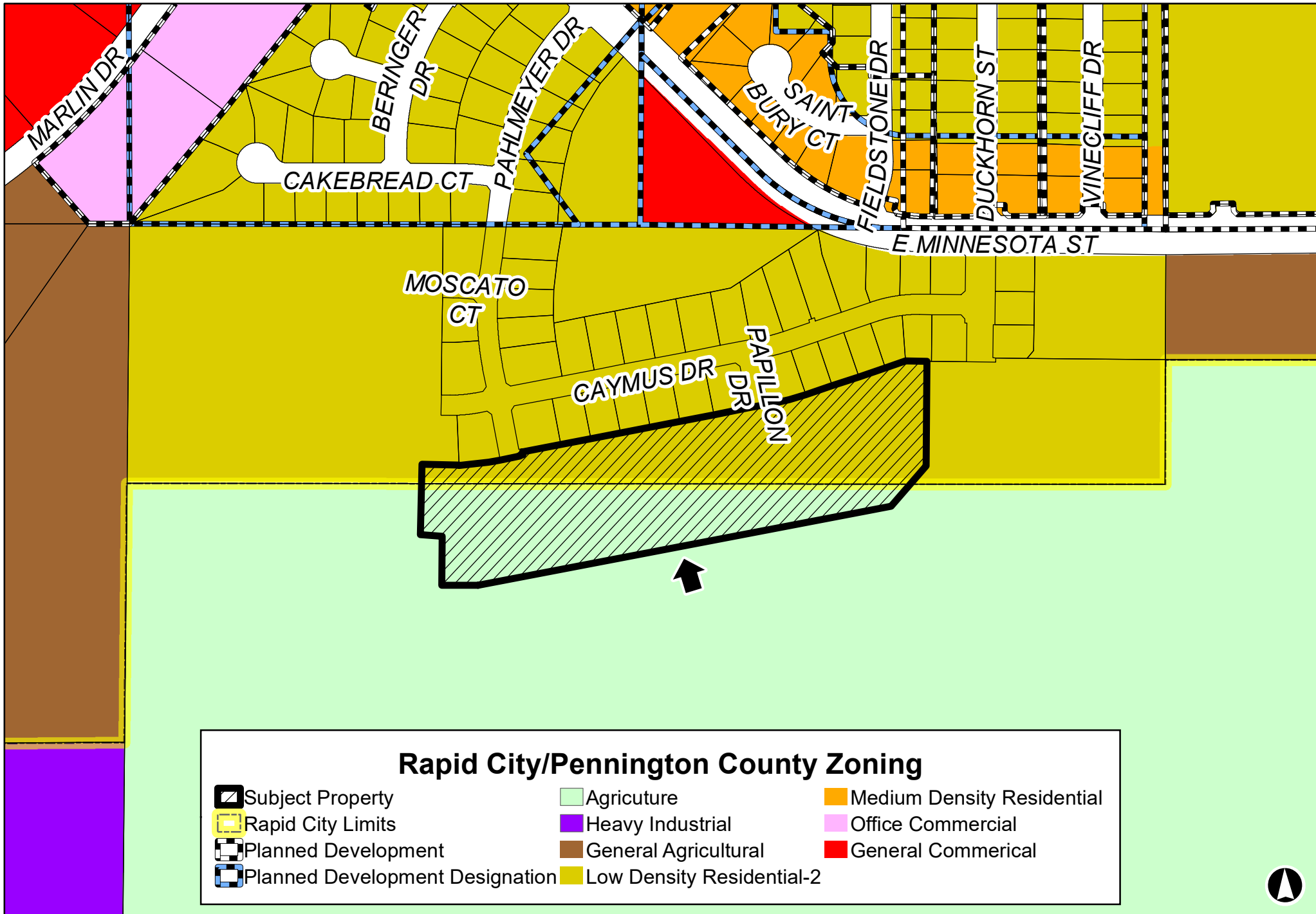
VINECLIFF DR





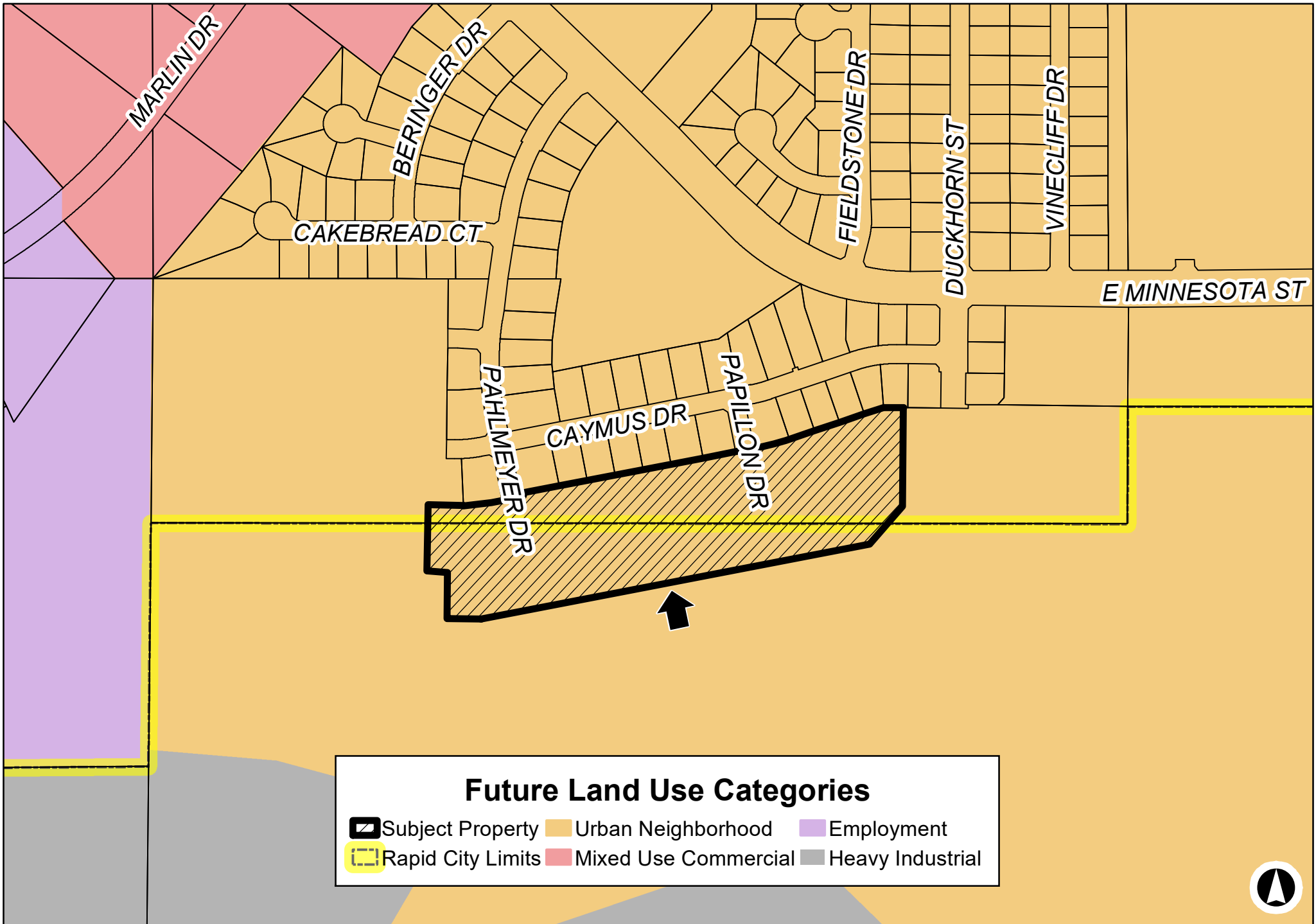
21PL106

# South of Pahlmeyer Drive and Caymus Drive Intersection



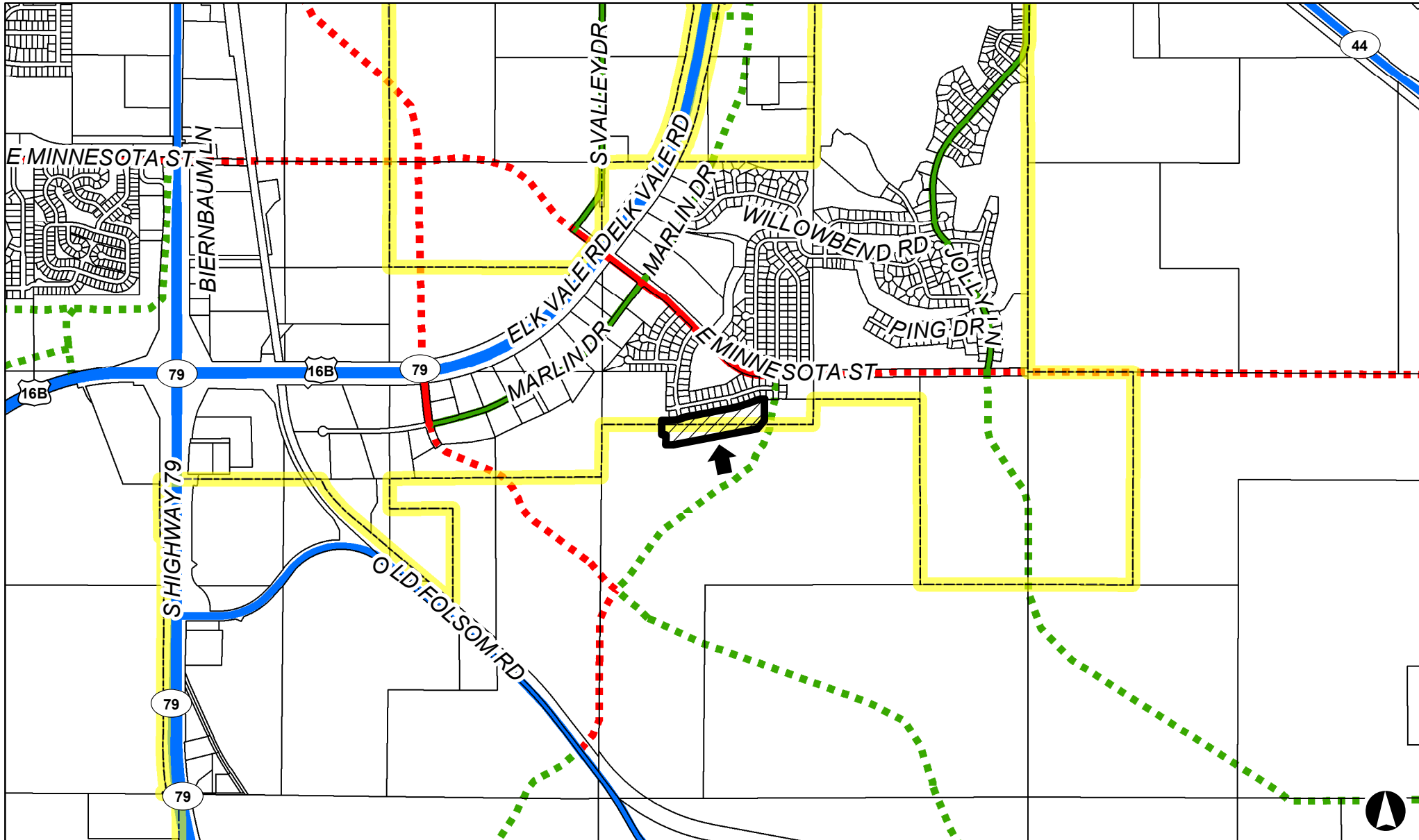
21PL106

# South of Pahlmeyer Drive and Caymus Drive Intersection



21PL106

# South of Pahlmeyer Drive and Caymus Drive Intersection



## Major Street Plan

- Subject Property
- Collector
- Principal arterial
- Proposed minor arterial
- Rapid City Limits
- Minor arterial
- Proposed collector