

Case No. 19PD014

**Legal Description:**

Lot 12 thru 16 of Block 115 of Original Town of Rapid City, located in Section 1, T1N, R7E, BHM, Rapid City, Pennington County, South Dakota

WAVI, Inc.  
527 Quincy Street  
Rapid City, SD 57701

April 12, 2019

City of Rapid City  
300 6<sup>th</sup> Street  
Rapid City, SD 57701

RECEIVED  
APR 12 2019  
RAPID CITY DEPARTMENT OF  
COMMUNITY DEVELOPMENT

RE: Major Amendment Application Exception Explanations for Project PLAYSAFE at WAVI Campus

To Whom It May Concern:

Please see the below explanations for the Exceptions being applied for.

Exception 1:

Current Code prohibits any fence over 4' for the frontage. Homeland Security recommends a 7' wooden fence with narrow gaps between slats to ensure security and privacy for WAVI clients. There is a current fencing structure area behind the building which meets these guidelines. For questions or more information, please contact Corey Brubakken, Pennington County Sheriff's Office, 394-6115 or [brubakken@pennco.org](mailto:brubakken@pennco.org). The proposed Fence does not encroach into any sight triangles at the intersection of Kansas City Street and 6<sup>th</sup> Street.

Exception 2:

Landscaping requirements call for over 19,000 landscaping point encompassing the modified area. Due to safety and security concerns for the enclosed fenced area for the Playground, no trees will be planted inside the area. Due to lack of room to meet the requirements for landscaping, an exception is being made based on lack of room and security and safety to the occupants of the campus.

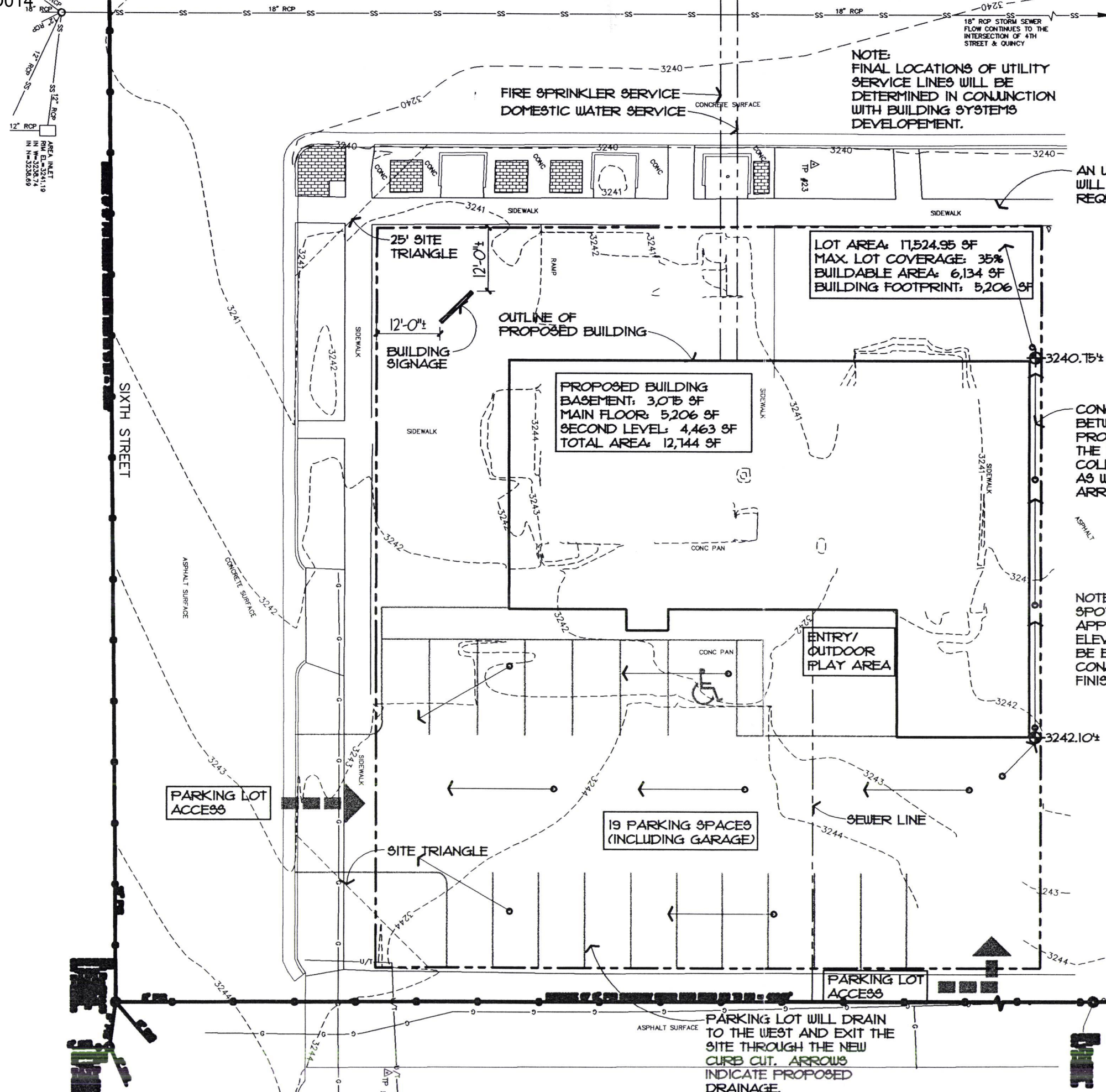
Thank you for your time and consideration to our request. Please reply with any further questions or concerns, as needed.

Kristina Simmons



(Title)

Development Director  
Working Against Violence Inc.  
341-3292



RECEIVED  
APR 12 2019  
RAPID CITY DEPARTMENT OF  
COMMUNITY DEVELOPMENT

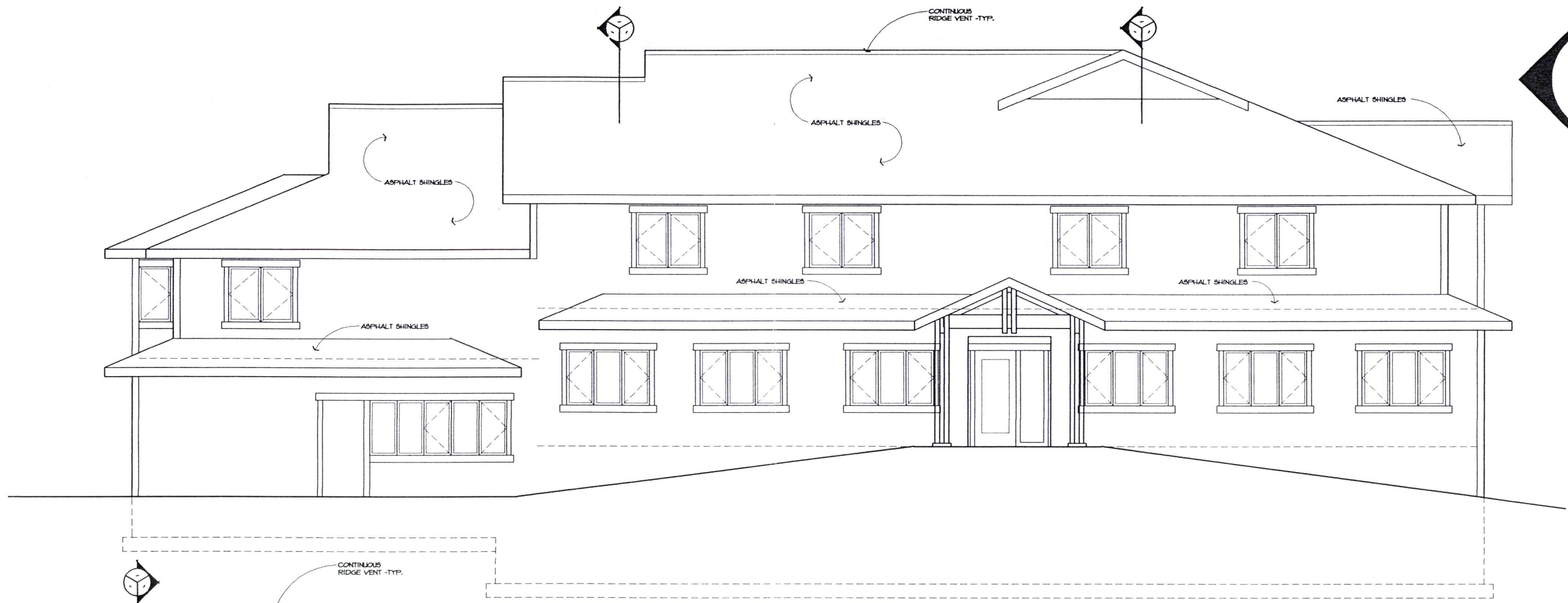
**PROPOSED SITE PLAN**  
1" = 20'-0"

**WORKING AGAINST  
VIOLENCE, INC.**  
109  
RAPID CITY SOUTH DAKOTA 57602

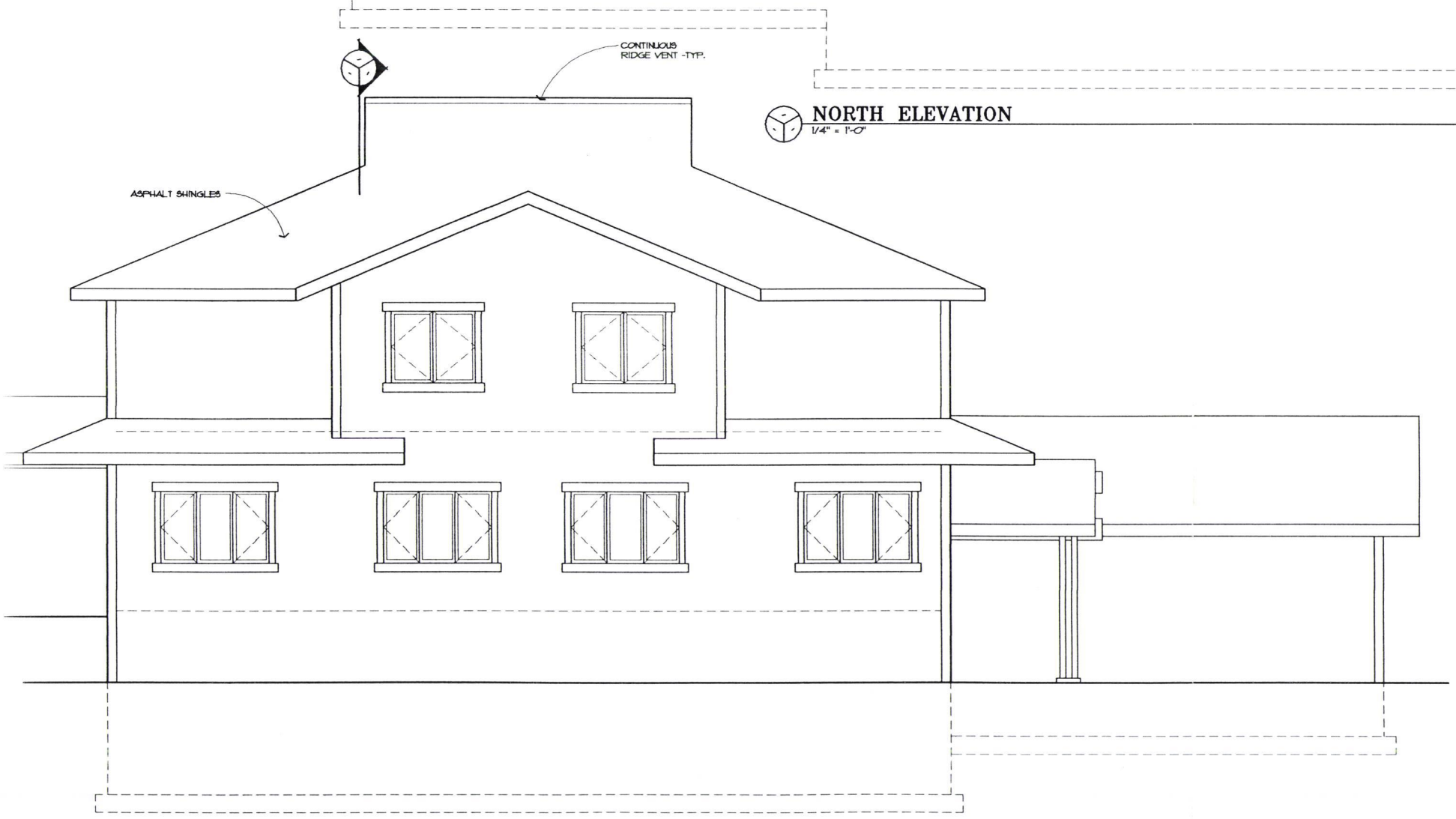
**SITE  
PLAN**

**ARCHITECTURE**





 **NORTH ELEVATION**  
1/4" = 1'-0"



 **WEST ELEVATION**  
1/4" = 1'-0"

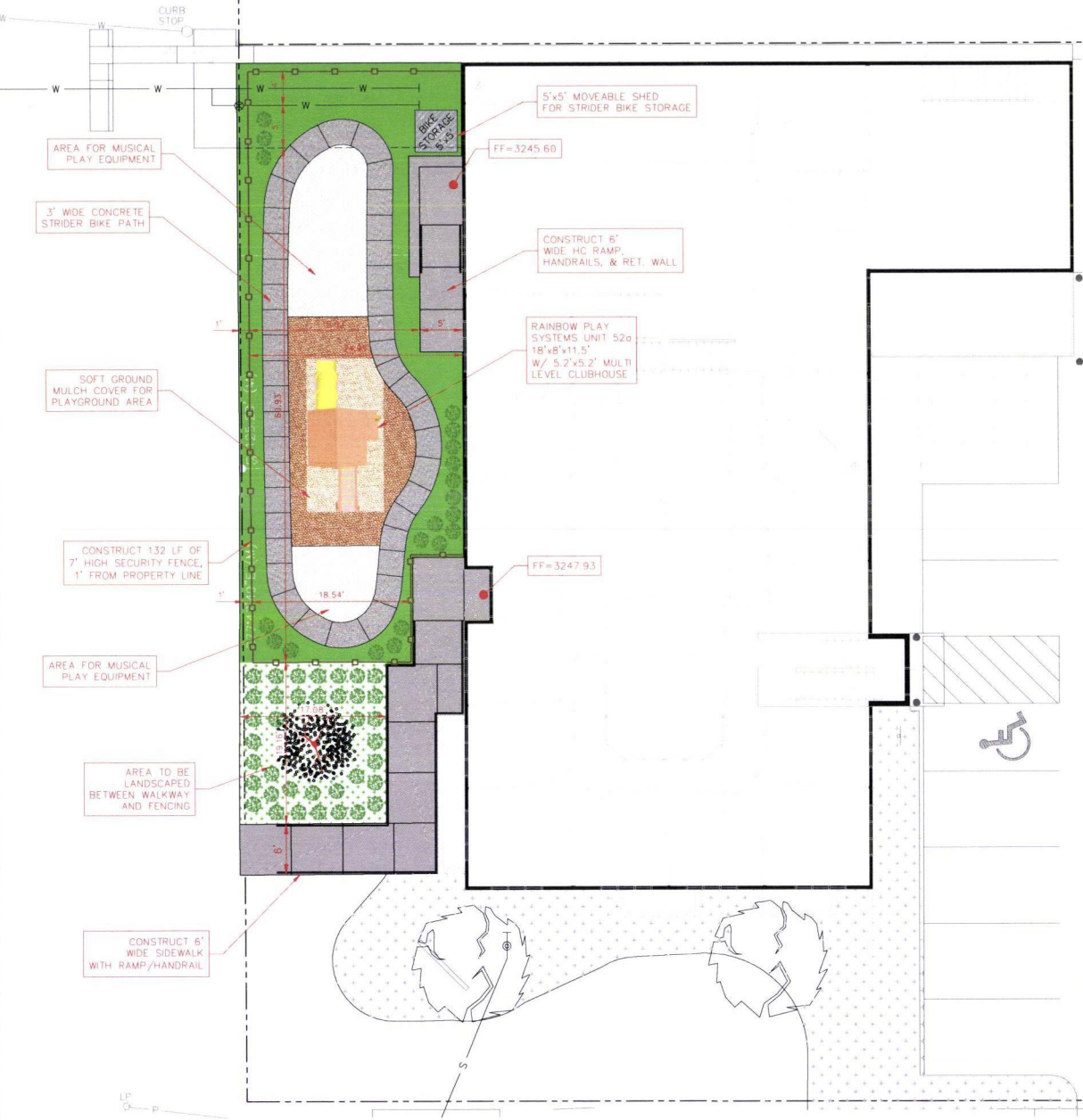
RECEIVED  
APR 12 2019  
RAPID CITY DEPARTMENT OF  
COMMUNITY DEVELOPMENT

RECEIVED  
JUL 26 2002  
Rapid City  
Planning Department

WORKING AGAINST  
VIOLENCE, INC. 109  
RAPID CITY SOUTH DAKOTA 6/20/02





EXTERIOR  
ELEVATIONS

**ARCHITECTURE**  
Thompson Design Group LLC  
522 Main St. Rapid City, SD 57701  
P: 605.482.2648  
F: 605.482.0511



VICINITY MAP

LANDSCAPE TABULATION

	MEDIUM TREE / 1000 POINTS	1 X 1000 = 1,000
	SHRUBS/BUSHES / 250 POINTS	58 X 250 = 1,4500
	GROUND COVER / 1 SQ. YD. = 100 POINTS	6.18 SY = 618
	GRASS / 1 SQ. YD. = 10 POINTS	71.67 SY = 717 16,835 POINTS

RECEIVED

APR 12 2019

RAPID CITY DEPARTMENT OF COMMUNITY DEVELOPMENT

NOTE: THIS MAP IS INTENDED FOR PROPOSALS ONLY. DO NOT ATTEMPT TO USE THIS DRAWING FOR ANY CONSTRUCTION PURPOSES.

DATE	DRAWN BY	NO.	APPROVED BY	REVISION DESCRIPTION

LRC CLASS OF 2017				
WAVI OF RAPID CITY - PROJECT PLAYSFAE				
LANDSCAPING PLAN				
REVISION	AP	DATE	4/18/19	PAGE NO.
LANDSCAPING				0