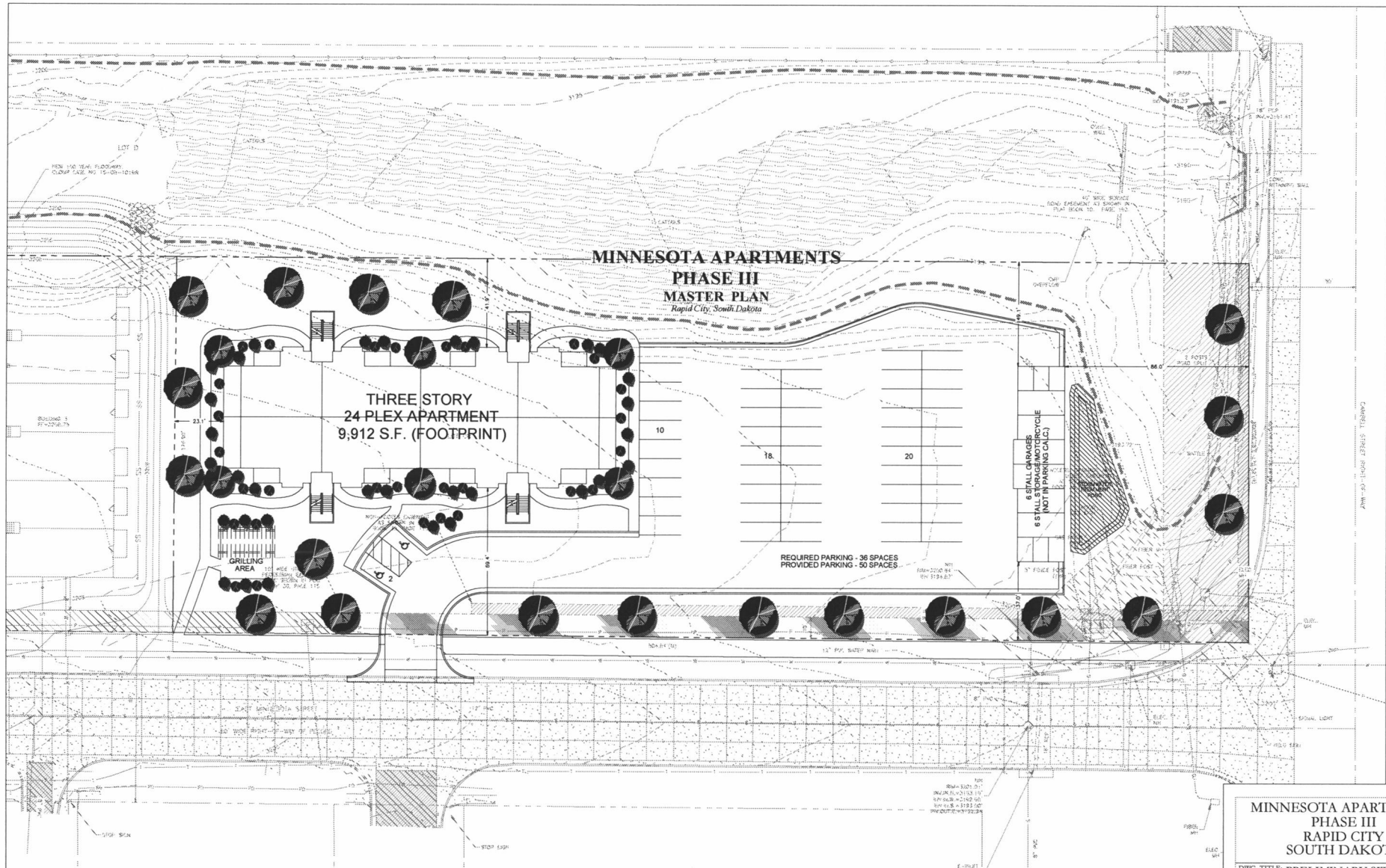


Case No. 18PD022

Legal Description:

Lot CR of Hamilton Subdivision, located in Section 18, T1N, R8E, BHM, Rapid City,
Pennington County, South Dakota

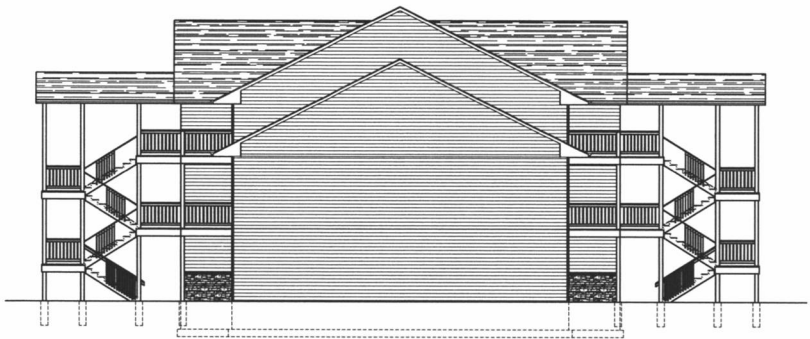


PRELIMINARY SITE PLAN

RECEIVED

JUN 08 2018

RAPID CITY DEPARTMENT OF
COMMUNITY DEVELOPMENT



RECEIVED

JUN 08 2018

RAPID CITY DEPARTMENT OF
COMMUNITY DEVELOPMENT

MINNESOTA APARTMENTS PHASE III RAPID CITY SOUTH DAKOTA			
DWG. TITLE: PRELIMINARY SITE PLAN			
DWG. No.:		FILE NAME:	
DR. BY: S. Bermudez		DATE:	
SCALE: 1" = 20'-0"		APPD. BY:	
PARADIGM CONSTRUCTION			1