

South Dakota Statewide 2009 Homeless Count Results

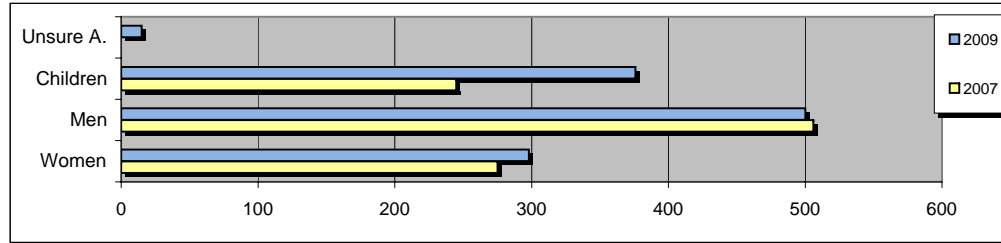
2009 Count Conducted - January 2009

2007 Count Conducted - September 2007

	2007	2009
Total Individuals Surveyed	471	483
Total Homeless Counted	310	330
Total Children Counted	245	376
Total Homeless	1026	1,189

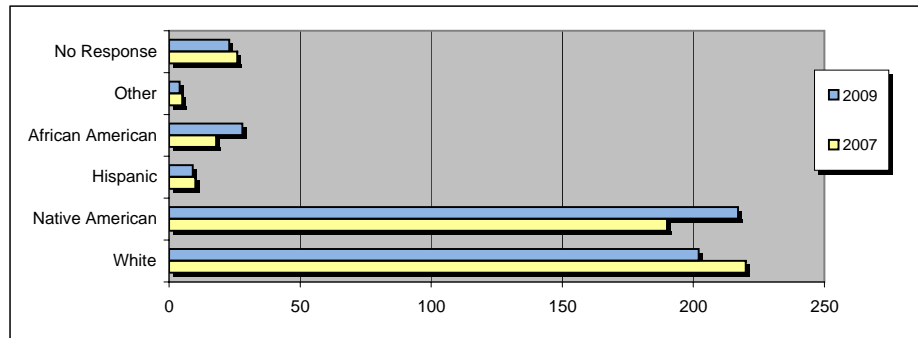
Total Male/Female (total homeless 1,189)

	2007	2009
Women	275	298
Men	506	500
Children	245	376
Unsure A.	0	15



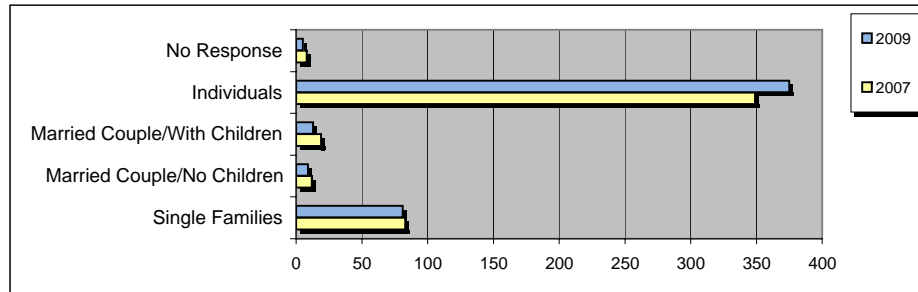
Total Race (survey only 483)

	2007	2009
White	220	202
Native American	190	217
Hispanic	10	9
African American	18	28
Other	5	4
No Response	26	23



Family Breakdown (survey only 483)

	2007	2009
Single Families	83	81
Married Couple/No Children	12	9
Married Couple/With Children	19	13
Individuals	349	375
No Response	8	5



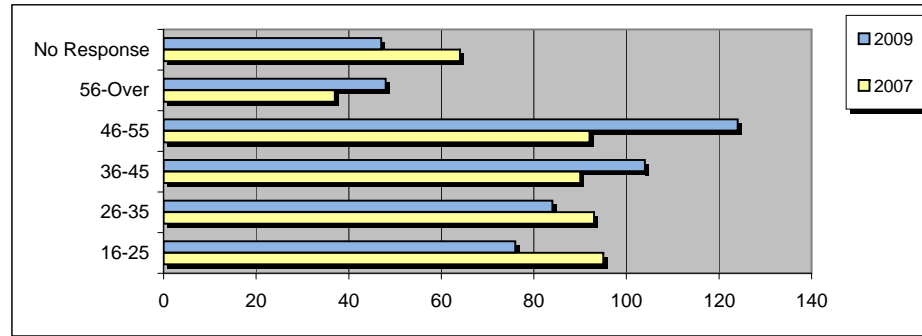
South Dakota Statewide 2009 Homeless Count Results

2009 Count Conducted - January 2009

2007 Count Conducted - September 2007

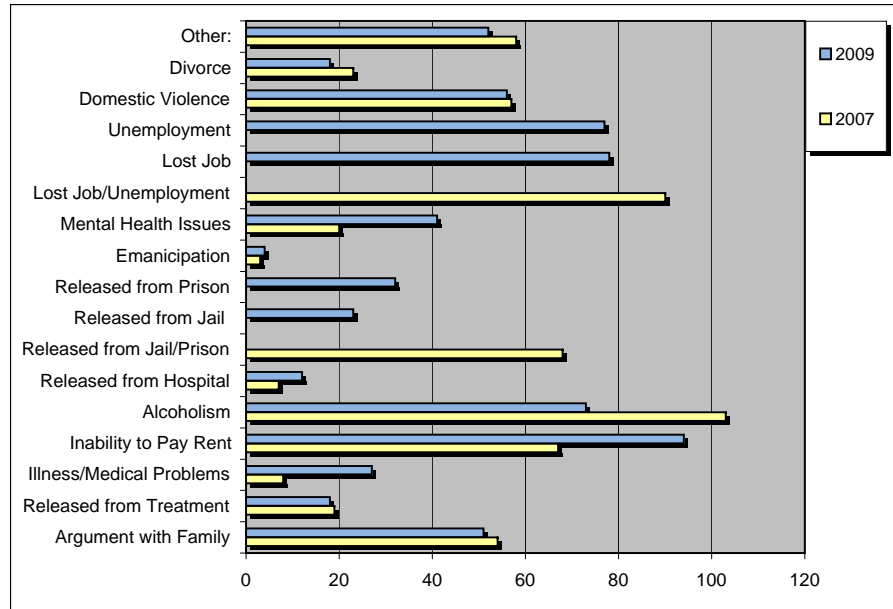
Age Demographics (survey only 483)

	2007	2009
16-25	95	76
26-35	93	84
36-45	90	104
46-55	92	124
56-Over	37	48
No Response	64	47



Prime Reason for Homelessness (Multiple Answers)

	2007	2009
Argument with Family	54	51
Released from Treatment	19	18
Illness/Medical Problems	8	27
Inability to Pay Rent	67	94
Alcoholism	103	73
Released from Hospital	7	12
Released from Jail/Prison	68	32
Released from Jail	23	32
Emanicipation	3	4
Mental Health Issues	20	41
Lost Job/Unemployment	90	77
Lost Job	78	77
Unemployment	57	56
Domestic Violence	57	56
Divorce	23	18
Other:	58	52



In 2009 - we divided up the Released from Prison/Jail as well as Lost Job/Unemployment into separate questions.

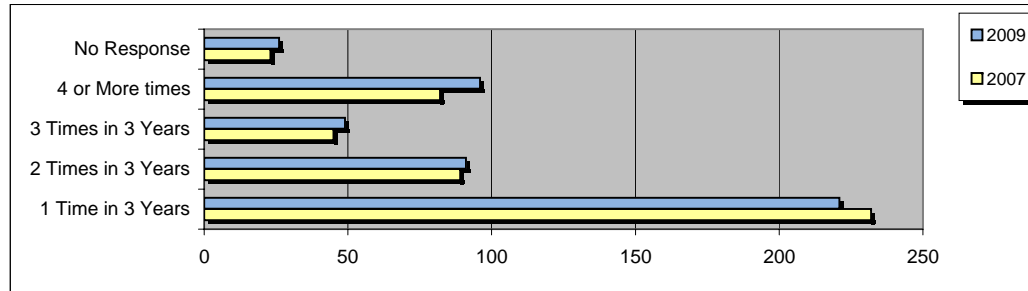
South Dakota Statewide 2009 Homeless Count Results

2009 Count Conducted - January 2009

2007 Count Conducted - September 2007

How Many Times Homeless in the last 3 years (survey only 483)

	2007	2009
1 Time in 3 Years	232	221
2 Times in 3 Years	89	91
3 Times in 3 Years	45	49
4 or More times	82	96
No Response	23	26



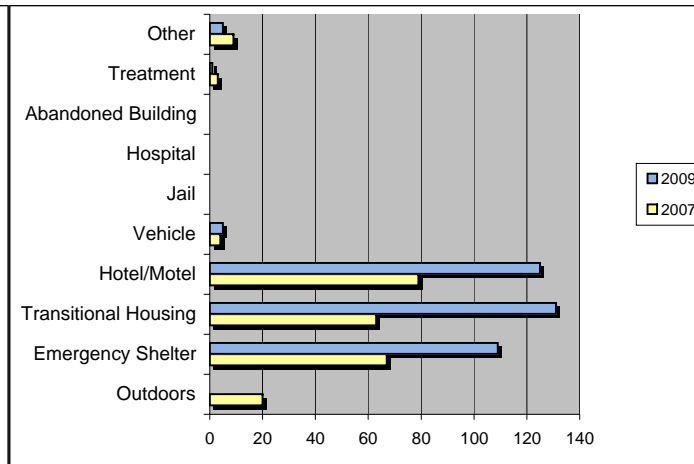
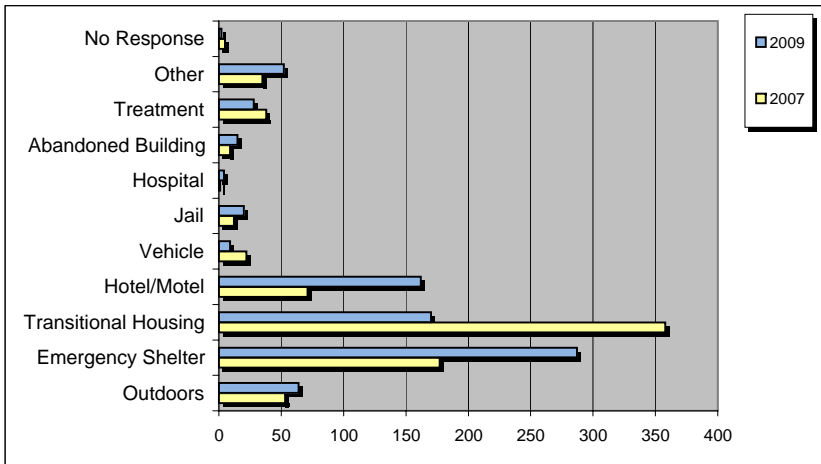
Where Are You Sleeping Tonight (total homeless - 1,189)

Adults - 813

	2007	2009
Outdoors	53	64
Emergency Shelter	177	287
Transitional Housing	358	170
Hotel/Motel	71	162
Vehicle	22	9
Jail	12	20
Hospital	1	4
Abandoned Building	9	15
Treatment	38	28
Other	35	52
No Response	5	2

Children -376

	2007	2009
Outdoors	20	0
Emergency Shelter	67	109
Transitional Housing	63	131
Hotel/Motel	79	125
Vehicle	4	5
Jail	0	0
Hospital	0	0
Abandoned Building	0	0
Treatment	3	1
Other	9	5



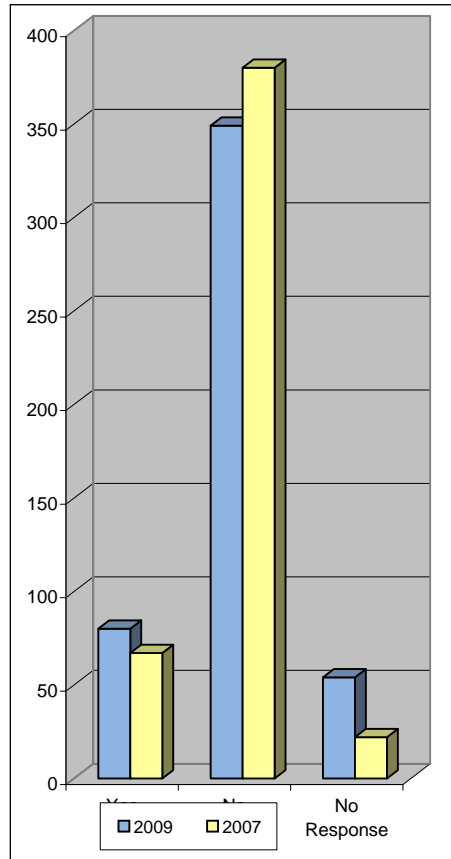
South Dakota Statewide 2009 Homeless Count Results

2009 Count Conducted - January 2009

2007 Count Conducted - September 2007

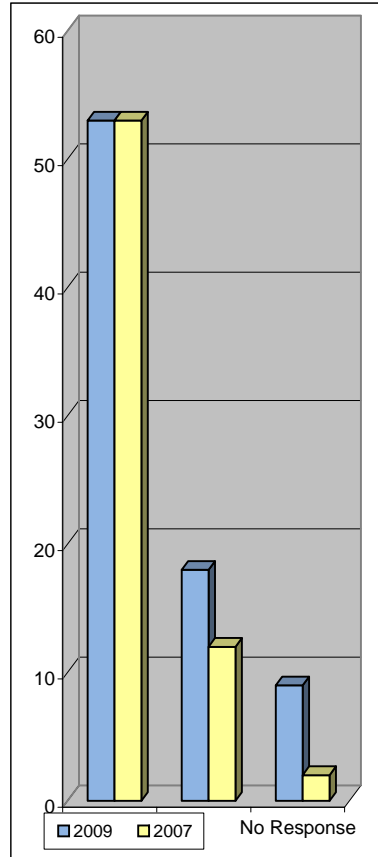
Have you Served in the Military (survey's only 483)

	2007	2009
Yes	67	80
No	380	349
No Response	22	54



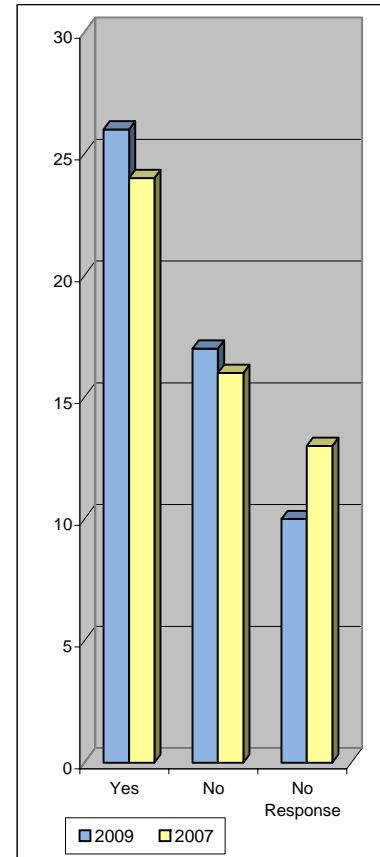
Are you Registered with the VA

	2007	2009
Yes	53	53
No	12	18
No Response	2	9



Are You Receiving Veteran's Benefits

	2007	2009
Yes	24	26
No	16	17
No Response	13	10



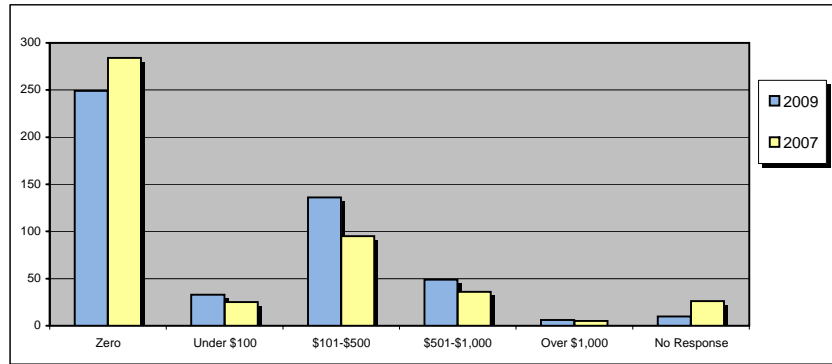
South Dakota Statewide 2009 Homeless Count Results

2009 Count Conducted - January 2009

2007 Count Conducted - September 2007

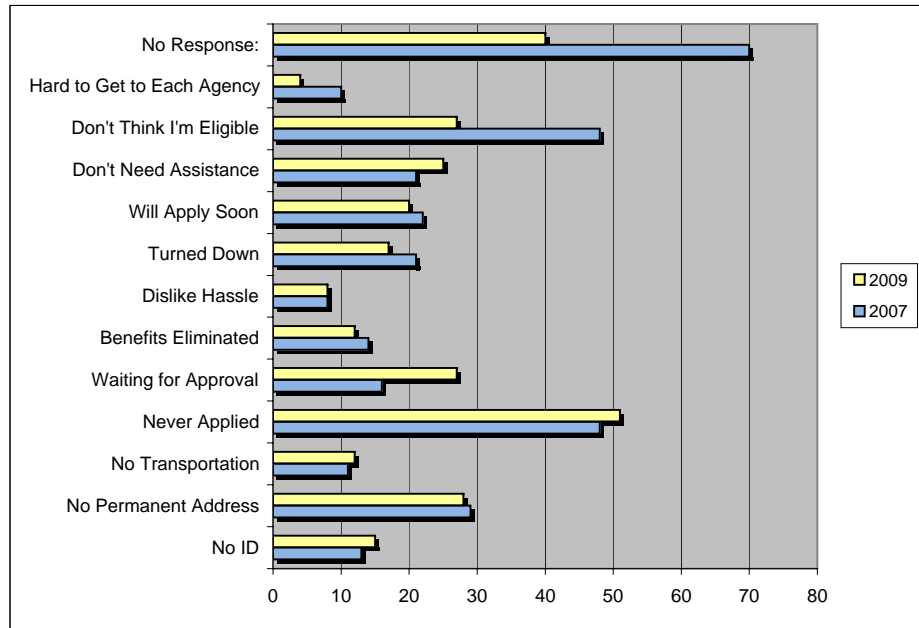
How Much Gov't Assistance Do You Get Monthly (survey only 483)

	2007	2009
Zero	284	249
Under \$100	25	33
\$101-\$500	95	136
\$501-\$1,000	36	49
Over \$1,000	5	6
No Response	26	10



If You Are Not Receiving Gov't Assistance - WHY? - Multiple Answers

	2007	2009
No ID	13	15
No Permanent Address	29	28
No Transportation	11	12
Never Applied	48	51
Waiting for Approval	16	27
Benefits Eliminated	14	12
Dislike Hassle	8	8
Turned Down	21	17
Will Apply Soon	22	20
Don't Need Assistance	21	25
Don't Think I'm Eligible	48	27
Hard to Get to Each Agency	10	4
No Response:	70	40



South Dakota Statewide 2009 Homeless Count Results

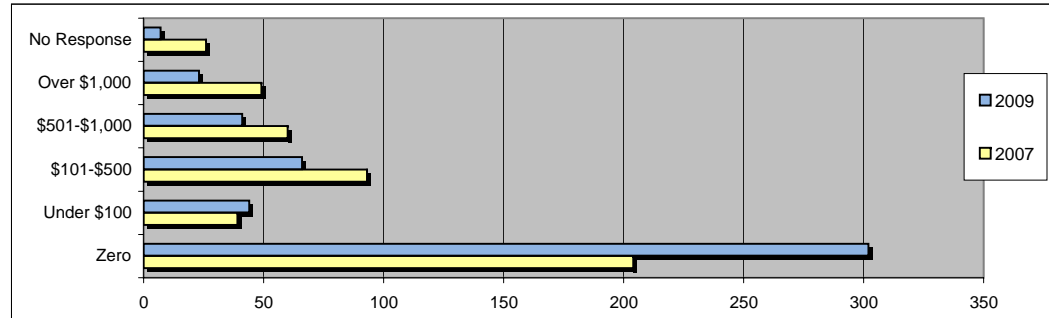
2009 Count Conducted - January 2009

2007 Count Conducted - September 2007

How much monthly income do you receive (survey only - 483)

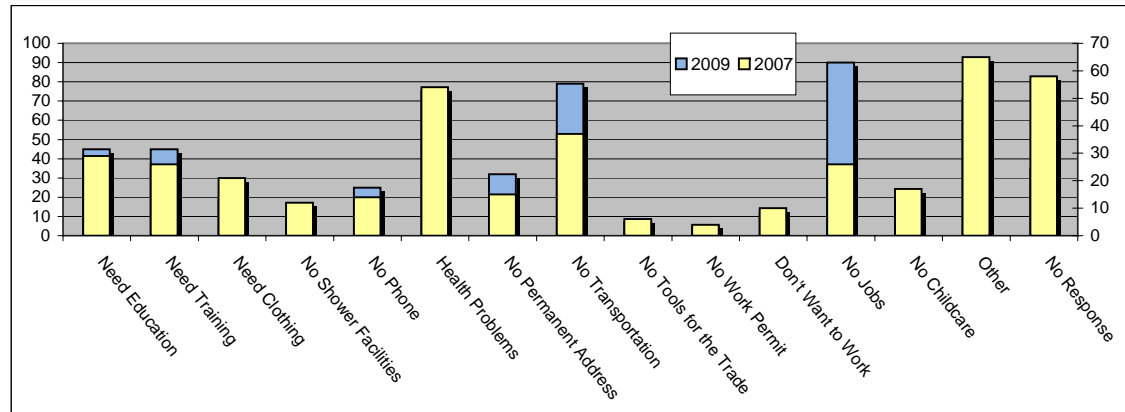
	2007	2009
Zero	204	302
Under \$100	39	44
\$101-\$500	93	66
\$501-\$1,000	60	41
Over \$1,000	49	23
No Response	26	7

138 out of the 174 (80%) stated their income came from employment



If You Do Not Receive Monthly Income, Why - Multiple Answers - NEW

	2007	2009
Need Education	29	45
Need Training	26	45
Need Clothing	21	19
No Shower Facilities	12	10
No Phone	14	25
Health Problems	54	75
No Permanent Address	15	32
No Transportation	37	79
No Tools for the Trade	6	7
No Work Permit	4	5
Don't Want to Work	10	12
No Jobs	26	90
No Childcare	17	19
Other	65	71
No Response	58	35



South Dakota Statewide 2009 Homeless Count Results

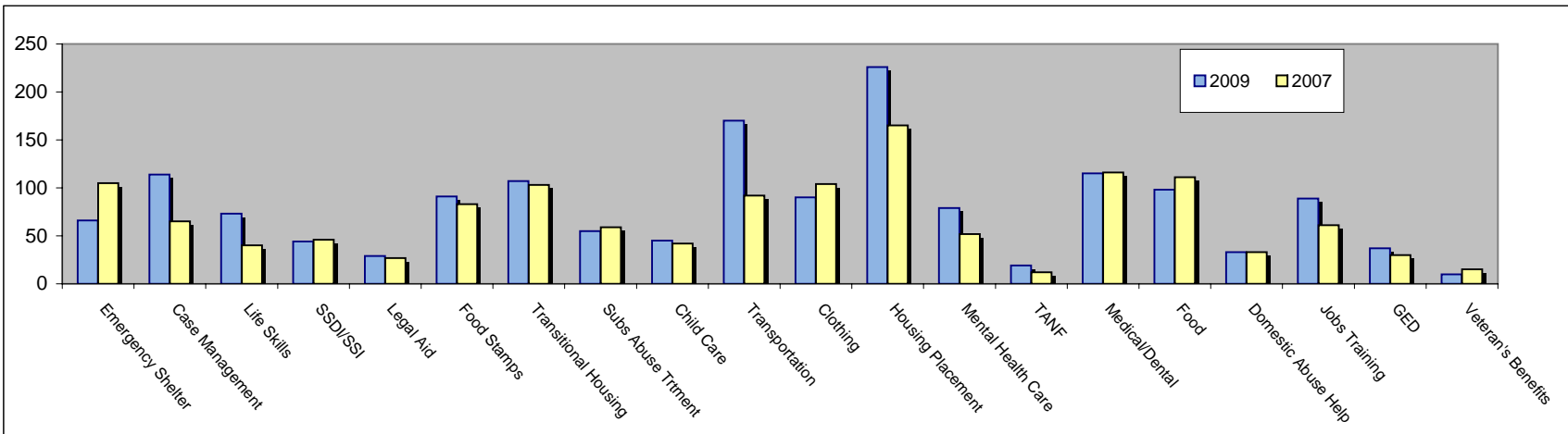
2009 Count Conducted - January 2009

2007 Count Conducted - September 2007

What Services Do You Currently Need - Multiple Answers

	2007	2009
Emergency Shelter	105	66
Case Management	65	114
Life Skills	40	73
SSDI/SSI	46	44
Legal Aid	27	29
Food Stamps	83	91
Transitional Housing	103	107
Subs Abuse Trtment	59	55
Child Care	42	45
Transportation	92	170
Clothing	104	90
Housing Placement	165	226
Mental Health Care	52	79
TANF	12	19
Medical/Dental	116	115
Food	111	98
Domestic Abuse Help	33	33
Jobs Training	61	89
GED	30	37
Veteran's Benefits	15	10

	2007	2009
I Don't Need Assistance	46	32
No Response	1	0



South Dakota Statewide 2009 Homeless Count Results

2009 Count Conducted - January 2009

2007 Count Conducted - September 2007

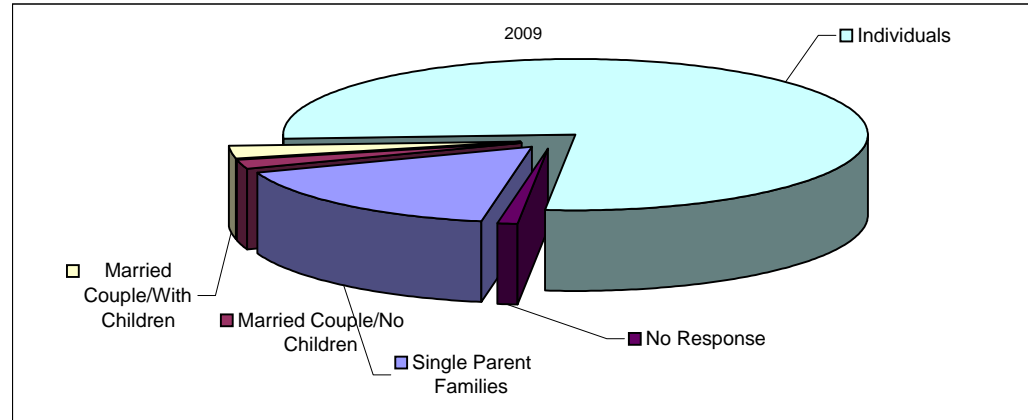
SINGLE PARENT FAMILIES - Family Breakdown (Surveys only 483)

2009

Single Parent Families	81
Married Couple/No Children	9
Married Couple/With Children	13
Individuals	375
No Response	5

73 out of the 81 (90%) single parent families are female head of household

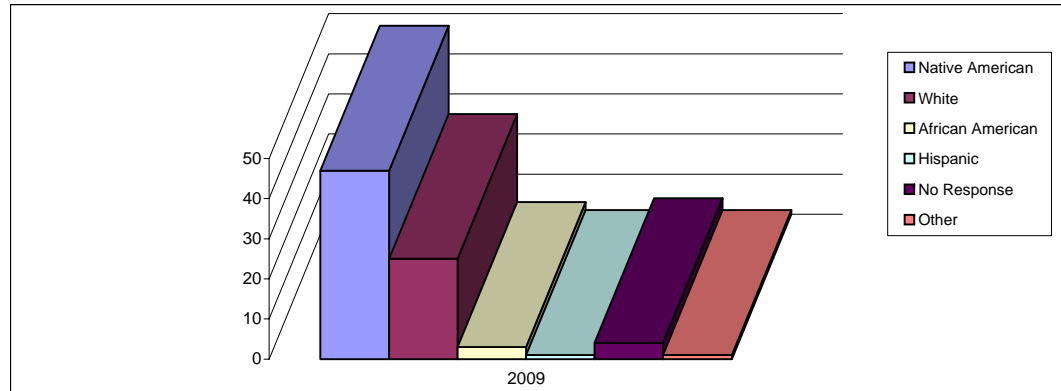
170 out of 204 (83%) children counted live in these single parent family households



SINGLE PARENT FAMILY - Race - total 81 families

2009

Native American	47
White	25
African American	3
Hispanic	1
No Response	4
Other	1



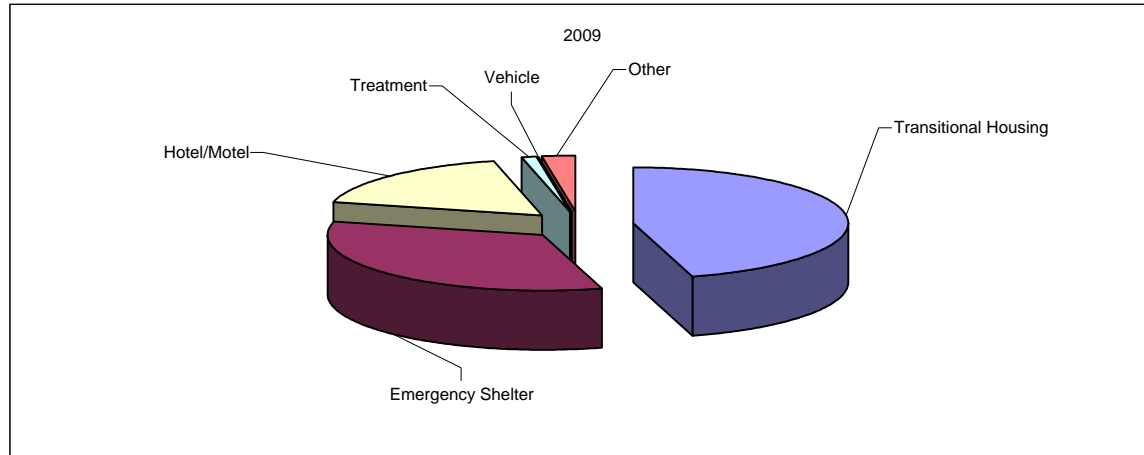
South Dakota Statewide 2009 Homeless Count Results

2009 Count Conducted - January 2009
2007 Count Conducted - September 2007

SINGLE PARENT FAMILY - RESIDENCY - 81 Families

2009

Transitional Housing	37
Emergency Shelter	27
Hotel/Motel	14
Treatment	1
Vehicle	0
Other	2



SINGLE PARENT FAMILY - MONTHLY INCOME - 81 Families

2007

Zero	42
Under \$100	3
\$101-\$600	22
\$601-\$1,000	8
Over \$1,000	6
No Response	0

NO INCOME - WHY? - 42 single parent families

2009

Health Problems	4
Need Education	7
No Child Care	8
Need Training	9
No Transportation	14

32 of 39 (82%) single parent families with monthly income stated job as source of income. 18% stated child support as their source of income.

* Of those single parent families who make over \$1,000 a month, Domestic Violence is the main reason for their homelessness,

South Dakota Statewide 2009 Homeless Count Results

2009 Count Conducted - January 2009
2007 Count Conducted - September 2007

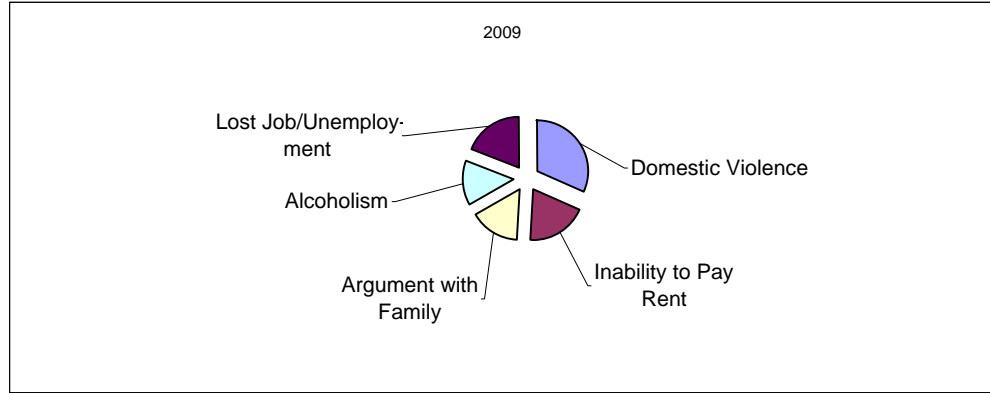
SINGLE PARENT FAMILY - REASON FOR HOMELESSNESS - 81 Families

2009

Domestic Violence	20
Inability to Pay Rent	12
Argument with Family	10
Alcoholism	9
Lost Job/Unemployment	12

Other:

- 1) Car accident - lost my job
- 2) Lost trailer home
- 3) Evicted
- 4) Felonies
- 5) paying too much child support - can't afford rent
- 6) Death of parents



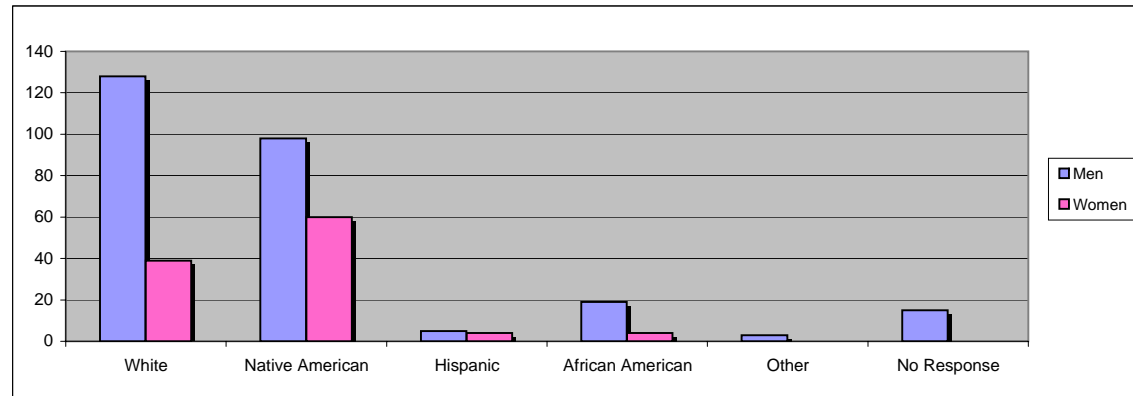
INDIVIDUALS - WOMEN/MEN STATISTICS - 587 Total (375 surveyed/212 counted)

2009

Men	425
Women	147
Unsure	15

INDIVIDUAL - RACE - 375 Surveyed

	Men	Women
White	128	39
Native American	98	60
Hispanic	5	4
African American	19	4
Other	3	0
No Response	15	0



South Dakota Statewide 2009 Homeless Count Results

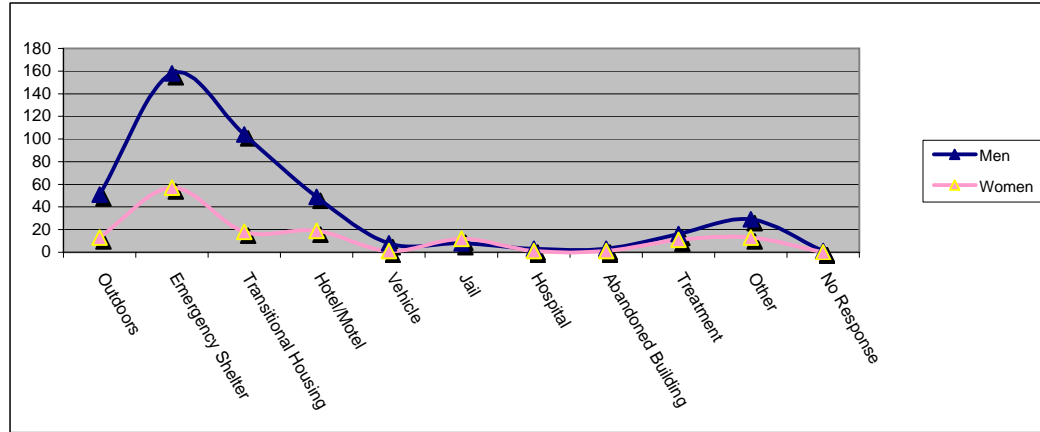
2009 Count Conducted - January 2009

2007 Count Conducted - September 2007

INDIVIDUAL - RESIDENCY - 587 Surveyed/Counted

	Men	Women
Outdoors	51	13
Emergency Shelter	158	57
Transitional Housing	104	18
Hotel/Motel	49	19
Vehicle	8	1
Jail	8	12
Hospital	3	1
Abandoned Building	3	1
Treatment	16	11
Other	29	13
No Response	1	0

* an additional 11 unsure adults were counted as sleeping outdoors



INDIVIDUAL - AGE - 375 Surveyed

	Men	Women
16-25	21	30
26-35	36	14
36-45	59	25
46-55	90	24
56-Over	37	9
No Response	25	5

INDIVIDUAL - HOMELESS EPISODES - 375 Surveyed

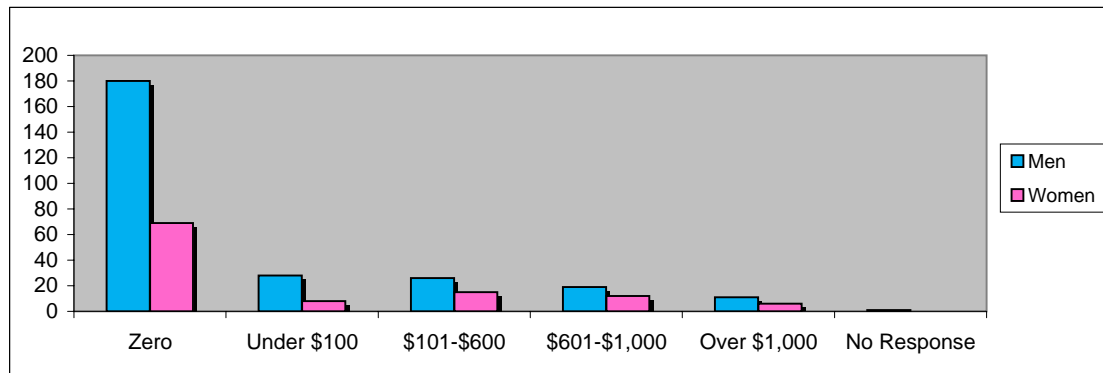
	Men	Women
3 times or Less	178	93
4 or More times	68	19
No Response	17	0

18% of the female and 26% of the male individuals surveyed have been homeless 4 or more times in three years and are considered "chronically" homeless

INDIVIDUAL - MONTHLY INCOME - 375 Surveyed

	Men	Women
Zero	180	69
Under \$100	28	8
\$101-\$600	26	15
\$601-\$1,000	19	12
Over \$1,000	11	6
No Response	1	0

Men: 62 out of 84 (74%) stated their income comes from employment.
 Women: 31 out of 41 (76%) stated their income comes from employment



South Dakota Statewide 2009 Homeless Count Results

2009 Count Conducted - January 2009

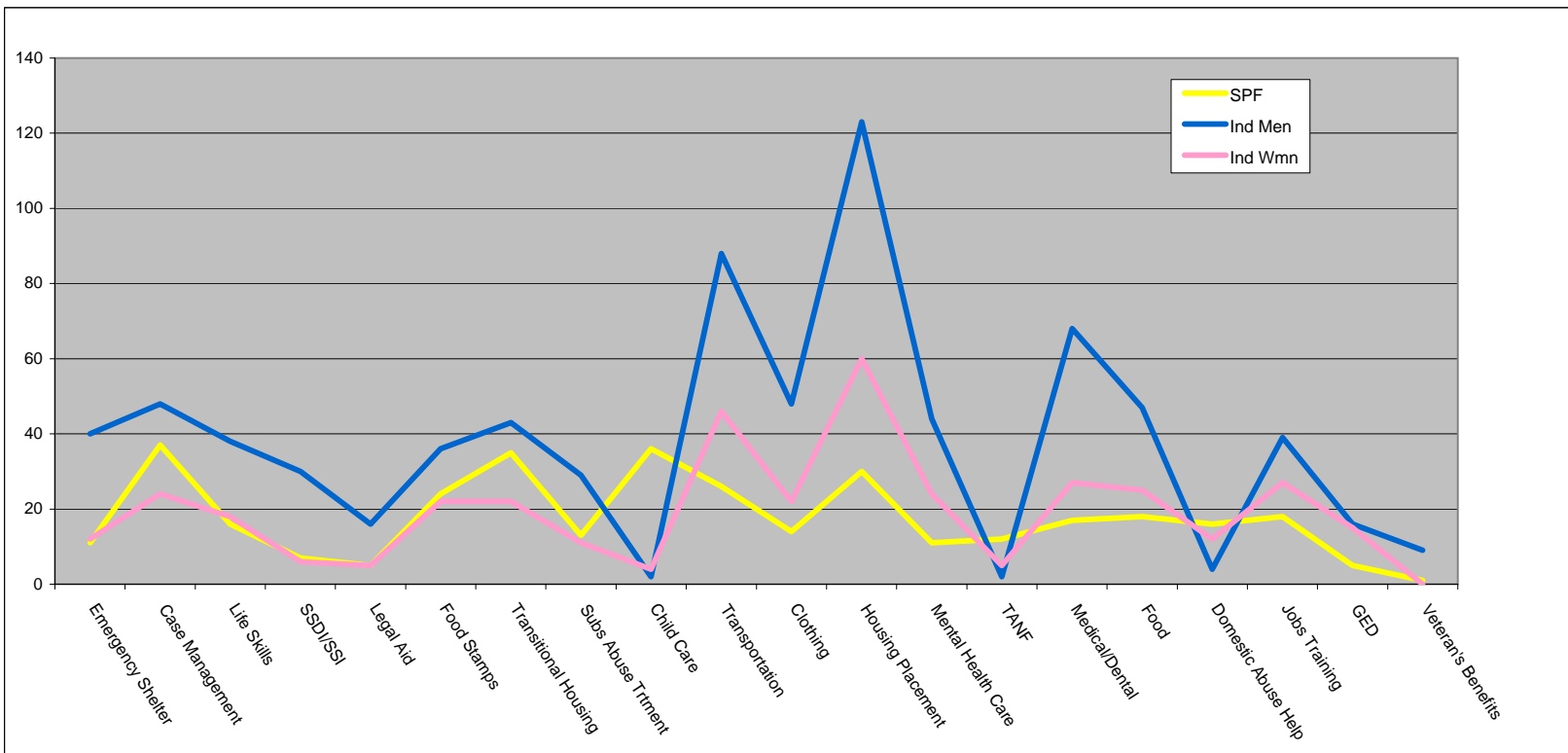
2007 Count Conducted - September 2007

What Services Do You Currently Need - Multiple Answers

	SPF	Ind Men	Ind Wmn
Emergency Shelter	11	40	12
Case Management	37	48	24
Life Skills	16	38	18
SSDI/SSI	7	30	6
Legal Aid	5	16	5
Food Stamps	24	36	22
Transitional Housing	35	43	22
Subs Abuse Trtment	13	29	11
Child Care	36	2	4
Transportation	26	88	46
Clothing	14	48	22
Housing Placement	30	123	60
Mental Health Care	11	44	24
TANF	12	2	5
Medical/Dental	17	68	27
Food	18	47	25
Domestic Abuse Help	16	4	12
Jobs Training	18	39	27
GED	5	16	15
Veteran's Benefits	1	9	0

	*SPF	Ind Men	Ind Wmn
I Don't Need Assistance	5	22	2
No Response	9	25	14

*Single Parent Families



South Dakota Statewide 2009 Homeless Count Results

2009 Count Conducted - January 2009

2007 Count Conducted - September 2007

Counties that submitted homeless information (survey/homeless count forms)

County	2006 Adult	2006 Child	2007 Adult	2007 Child	2009 Adult	2009 Child	2009 Total	County	2006 Adult	2006 Child	2007 Adult	2007 Child	2009 Adult	2009 Child	2009 Total
Aurora								Hyde							
Beadle					14	4	18	Jackson							
Bennett								Jerauld							
Bon Homme								Jones							
Brookings	2	2	4	1	2	3	5	Kingsbury					0 reported	0 reported	0
Brown			11	3	34	13	47	Lake							
Brule	1	1			3	4	7	Lawrence	3	0			5	0	5
Buffalo								Lincoln					0 reported	0 reported	0
Butte			1	3	0 Reported	0 Reported	0	Lyman							
Chambell								McCook					0 reported	0 reported	0
Charles Mix					12	13	25	McPherson							
Clark								Marshall							
Clay			1	0	1	0	1	Meade			6	0			
Codington	3	2	6	16	7	7	14	Mellette							
Corson					1	0	1	Miner					0 reported	0 reported	0
Custer	4	1	6	7				Minnehaha	316	85	514	134	322	125	447
Davison	3	9	6	7		3	6	Moody							
Day					0 Reported	0 Reported	0	Pennington	247	71	202	74	381	188	569
Deuel								Perkins	1	0			2	0	2
Dewey								Potter							
Douglas								Roberts					1	0	1
Edmunds								Sanborn					0 reported	0 reported	0
Fall River			13	0	7	11	18	Shannon							
Faulk								Spink							
Grant	1	1	4	0				Stanley							
Gregory								Sully							
Haakon								Todd							
Hamlin					0 reported	0 reported	0	Tripp			3	0			
Hand					0 reported	0 reported	0	Turner							
Hanson					0 reported	0 reported	0	Union							
Harding								Walworth					2	0	2
Hughes	4	3	2	0	7	1	8	Yankton	12	0	2	0	9	4	13
Hutchinson								Ziebach							

- Did not report

2009 TOTAL **1189**