

Legal Description:

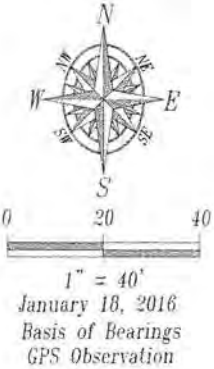
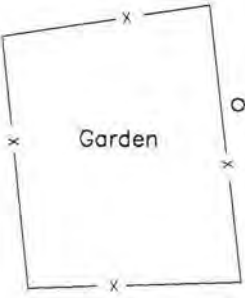
A parcel of land located in the Northwest One-Quarter (NW $\frac{1}{4}$) of Section Twenty-Nine (29) in Township Two North (T2N), Range Seven East (R7E) of the Black Hills Meridian (BHM), Rapid City, Pennington County, South Dakota, more fully described as follows: Beginning on the east-west $\frac{1}{4}$ section line at the point where the westerly right-of-way line of City Springs Road intersects and coincident with the northwest corner of Lot H1 of the NE $\frac{1}{4}$ NE $\frac{1}{4}$ SW $\frac{1}{4}$ of said Section 29, T2N, R7E, BHM, Rapid City, South Dakota as shown on the plat filed on September 28, 2010 and recorded in Book 12 of Highway Plat on Page 36, said point being marked by a rebar with survey cap "LS 6119"; thence, westerly on said $\frac{1}{4}$ section line, South 89 degrees 52 minutes 04 seconds West a distance of 50.00 feet more or less to a point marked by a rebar with survey cap "RW Fisk 6565"; thence, continuing westerly on said $\frac{1}{4}$ section line, South 89 degrees 52 minutes 04 seconds West a distance of 210.00 feet more or less to a point marked by a rebar with survey cap "RW FISK 6565"; thence, continuing westerly on said $\frac{1}{4}$ section line, South 89 degrees 52 minutes 04 seconds West a distance of 255.44 feet more or less to a point marked by a rebar with survey cap "RW FISK 6565"; thence, North 19 degrees 54 minutes 14 seconds East a distance of 9.23 feet more or less to a point marked by a rebar with survey cap "RW FISK 6565"; thence, North 64 degrees 21 minutes 32 seconds East a distance of 41.64 feet more or less to a point marked by a rebar with survey cap "RW FISK 6565"; thence, North 74 degrees 18 minutes 41 seconds East a distance of 75.62 feet more or less to a point marked by a rebar with survey cap "RW FISK 6565"; thence, South 87 degrees 31 minutes 33 seconds East a distance of 21.31 feet more or less to a point marked by a rebar with survey cap "RW FISK 6565"; thence, South 45 degrees 47 minutes 36 seconds East a distance of 29.92 feet more or less to a point marked by a rebar with survey cap "RW FISK 6565"; thence, North 89 degrees 52 minutes 04 seconds East a distance of 99.16 feet more or less to a point marked by a rebar with survey cap "RW FISK 6565"; thence, North 89 degrees 52 minutes 04 seconds East a distance of 260.06 feet more or less to a point on the westerly line of said City Springs Road right-of-way, said point marked by a rebar with survey cap "RW FISK 6565"; thence, southerly and on the westerly line of said City Springs Road right-of-way, South 00 degrees 00 minutes 05 seconds East a distance of 25.00 feet more or less to the point of beginning

Vault Block 1
199 Grave Sites Total
126 Proposed
73 Occupied

Vault Block 2
31 Grave Sites Total
30 Proposed
1 Occupied

NUM	BEARING	DISTANCE
L1	S45°47'36"E	29.92'
L2	S87°31'33"E	21.31'
L3	N74°18'41"E	75.62'
L4	N64°21'32"E	41.64'
L5	N19°54'14"E	9.23'
L6	S89°52'04"W	25.00'

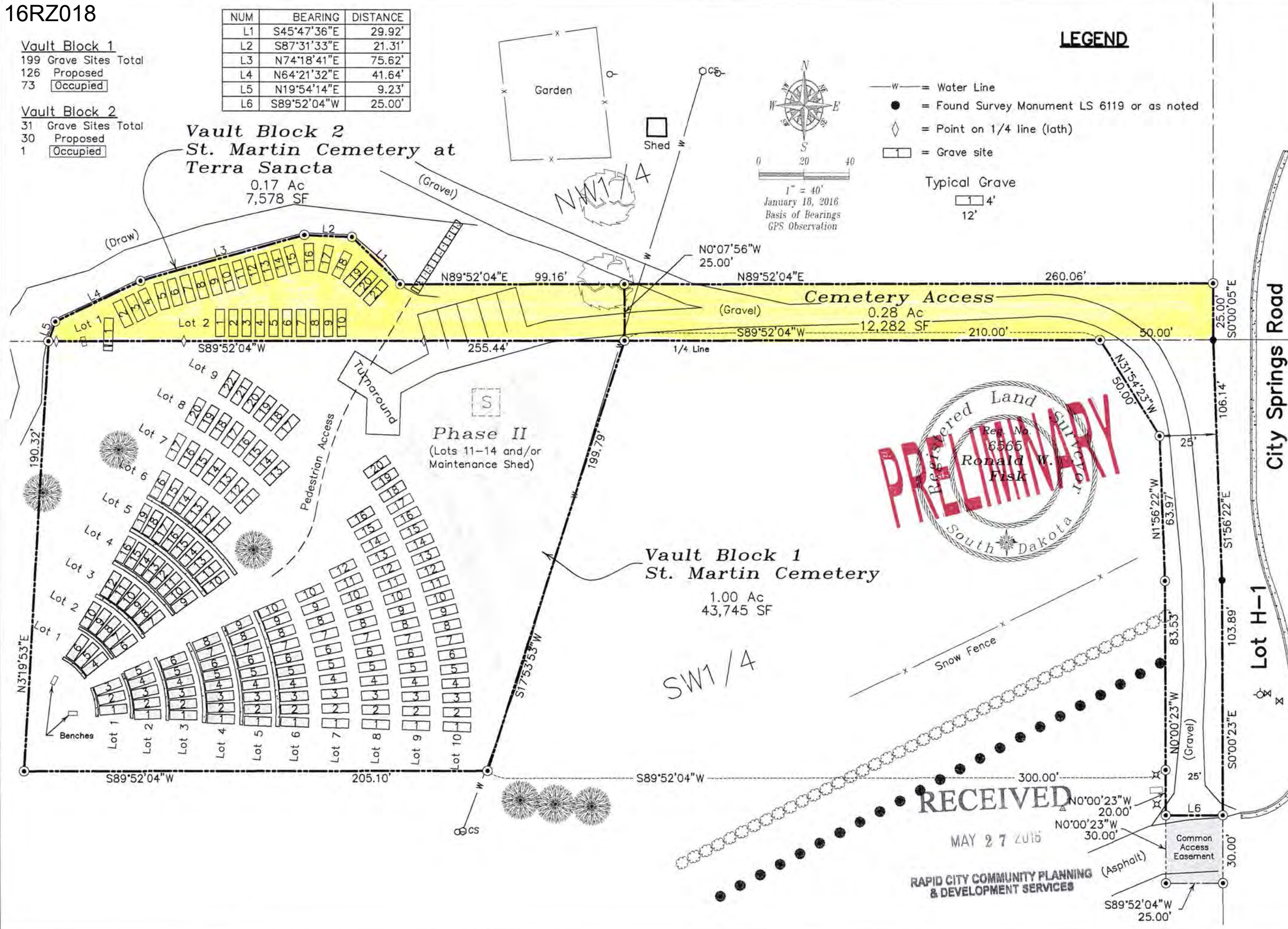
Vault Block 2
St. Martin Cemetery at
Terra Sancta
0.17 Ac
7,578 SF



LEGEND

- W — = Water Line
- = Found Survey Monument LS 6119 or as noted
- ◇ = Point on 1/4 line (lath)
- = Grave site

Typical Grave
4' x 12'



Fisk Land Surveying & Consulting, Inc.
1022 Main Street (P.O. Box 8154)
Rapid City, South Dakota 57709
(605) 348-1538
(605) 341-1112 (fx)

Cemetery Survey
Proposed Site Plan
In the NW1/4 and the SW1/4 of Section
29, T2N, R7E, BHM, Rapid City,
Pennington County, South Dakota.

Surveyed by: CD/BL
Date 1/14/2016
Drawn by: CDD
Checked by: JF
Revisions 2/19/2016 3/31/2016 5/16/2016 Parking
Site Plan 2 of 2
Project No. 16-01-02